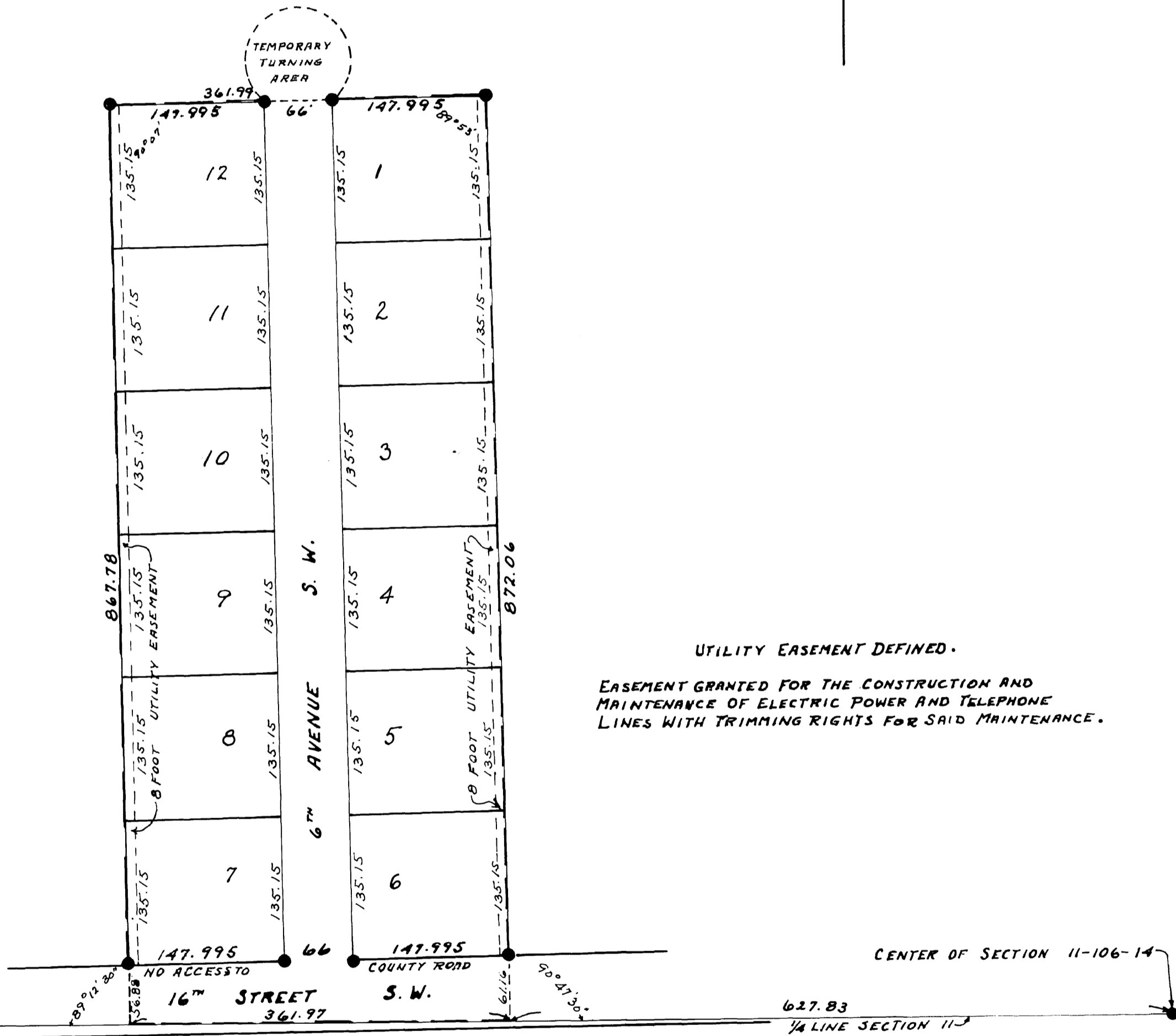
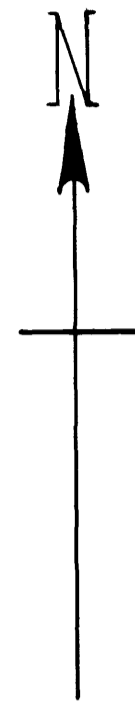


# MAPLE LANE

## OLMSTED COUNTY, MINNESOTA.

MEASUREMENTS IN FEET AND DECIMALS.  
 MONUMENTS SHOWN THUS ●.  
 BOUNDARIES SHOWN THUS ————  
 SCALE 1 INCH = 100 FEET.  
 1959.

*John J. Kerr* COUNTY SURVEYOR.  
 REGISTERED LAND SURVEYOR NO. 238.



UTILITY EASEMENT DEFINED.  
 EASEMENT GRANTED FOR THE CONSTRUCTION AND MAINTENANCE OF ELECTRIC POWER AND TELEPHONE LINES WITH TRIMMING RIGHTS FOR SAID MAINTENANCE.

### SURVEYORS CERTIFICATE.

STATE OF MINNESOTA,  
 COUNTY OF OLMSTED, S. S.  
 I, JOHN J. KERR COUNTY SURVEYOR IN AND FOR SAID COUNTY DO HEREBY CERTIFY THAT AT THE REQUEST OF M. D. FRANCIS AND BERNICE I. FRANCIS (HIS WIFE) MELVIN W. DAY AND CRYSTAL B. DAY (HIS WIFE) OWNERS OF THE FOLLOWING DESCRIBED LANDS TO-WIT: COMMENCING AT THE SOUTHEAST CORNER OF THE NORTHWEST 1/4 OF SECTION 11, TOWNSHIP 106, NORTH OF RANGE 14 WEST AND RUNNING THENCE WEST ALONG THE SOUTH LINE OF SAID NORTHWEST 1/4 A DISTANCE OF 627.83 FEET FOR A PLACE OF BEGINNING, THENCE WEST ALONG SAID SOUTH LINE A DISTANCE OF 361.97 FEET, THENCE NORTH PARALLEL WITH THE EAST LINE OF SAID NORTHWEST 1/4 A DISTANCE OF 867.78 FEET, THENCE EAST A DISTANCE OF 361.99 FEET, THENCE SOUTH A DISTANCE OF 872.06 FEET TO THE PLACE OF BEGINNING, I HAVE SURVEYED AND PLATTED SAID LANDS INTO LOTS, STREETS AND AVENUES SUCH SUBDIVISION TO BE KNOWN AND DESIGNATED AS "MAPLE LANE", I FURTHER CERTIFY THAT THE ACCOMPANYING PLAT IS A TRUE REPRESENTATION OF SAID SURVEY AS MADE, THAT MEASUREMENTS ARE SHOWN IN FEET AND DECIMALS, THAT MONUMENTS FOR THE GUIDANCE OF FUTURE SURVEYS HAVE BEEN PLACED IN THE GROUND AT THE LOCATIONS MARKED THUS ●, THAT THERE ARE NO WET LANDS THEREON, THAT SAID LANDS HAVE NOT HERE-TO-FORE BEEN PLATTED, THAT ANGLES OF ENCLOSURE ARE SHOWN AND THAT LAND TIES TO SECTION CONTROL POINTS ARE SHOWN.  
 DATED THIS 21<sup>ST</sup> DAY OF JUNE A.D. 1959

*John J. Kerr* COUNTY SURVEYOR.  
 REGISTERED LAND SURVEYOR NO. 238.

### DEDICATION.

WE THE UNDERSIGNED M. D. FRANCIS AND BERNICE I. FRANCIS (HIS WIFE) MELVIN W. DAY AND CRYSTAL B. DAY (HIS WIFE) DO HEREBY CERTIFY THAT WE ARE THE OWNERS OF THE LANDS DESCRIBED IN THE FOREGOING SURVEYORS CERTIFICATE, THAT WE HAVE CAUSED THE SAME TO BE SURVEYED AND PLATTED INTO LOTS, STREETS AND AVENUES SUCH SUBDIVISION TO BE KNOWN AS "MAPLE LANE", THAT WE DO FOR OURSELVES, OUR HEIRS, EXECUTORS, ADMINISTRATORS AND ASSIGNS HEREBY GRANT AND DEDICATE THE STREETS AND AVENUES AS SHOWN ON SAID PLAT TO THE PUBLIC USE AS SUCH FOREVER, IN TESTIMONY WHEREOF WE HAVE SET OUR HANDS AND SEALS THIS 30<sup>TH</sup> DAY OF JUNE A.D. 1959.  
 IN THE PRESENCE OF

WITNESS, *M. D. Francis*  
 WITNESS, *Bernice I. Francis*  
 WITNESS, *Melvin W. Day*  
 WITNESS, *Crystal B. Day*

### ACKNOWLEDGEMENT.

STATE OF MINNESOTA,  
 COUNTY OF OLMSTED, S. S.  
 ON THIS 21<sup>ST</sup> DAY OF JUNE A.D. 1959, BEFORE ME A NOTARY PUBLIC WITHIN AND FOR SAID STATE AND COUNTY PERSONALLY APPEARED M. D. FRANCIS AND BERNICE I. FRANCIS (HIS WIFE) MELVIN W. DAY AND CRYSTAL B. DAY (HIS WIFE) TO ME KNOWN TO BE THE PERSONS DESCRIBED IN AND WHO EXECUTED THE FOREGOING INSTRUMENT AND ACKNOWLEDGED THAT THEY EXECUTED THE SAME AS THEIR FREE ACT AND DEED.

*Notary Public* NOTARY PUBLIC, OLMSTED COUNTY, MINNESOTA.  
 MY COMMISSION EXPIRES 1959

STATE OF MINNESOTA,  
 COUNTY OF OLMSTED, S. S.  
 I, ROSS BROWNING, COUNTY AUDITOR IN AND FOR SAID COUNTY DO HEREBY CERTIFY THAT THE PLAT ATTACHED WAS DULY APPROVED BY THE BOARD OF COUNTY COMMISSIONERS AT A MEETING HELD ON THIS 14<sup>TH</sup> DAY OF JULY 1959. IN TESTIMONY WHEREOF I HAVE SIGNED MY NAME AND AFFIXED THE SEAL OF SAID COUNTY THIS 14<sup>TH</sup> DAY OF JULY A.D. 1959.

*Ross Browning* COUNTY AUDITOR.

TAXES PAID FOR THE YEAR OF 1958.

*Karl H. Oster* COUNTY TREASURER.

TAXES PAID AND TRANSFER ENTERED THIS 15<sup>TH</sup> DAY OF JULY A.D. 1959.

*Ross Browning* COUNTY AUDITOR.

APPROVED AS TO WATER SUPPLY AND SEWAGE DISPOSAL THIS 23<sup>RD</sup> DAY OF JULY 1959.  
 BY *Victor Wilson MD* HEALTH OFFICER.  
 ROCHESTER, OLMSTED COUNTY, HEALTH UNIT.

APPROVED THIS 2<sup>ND</sup> DAY OF JULY 1959.  
 OLMSTED COUNTY PLANNING COMMISSION.  
 BY *Ed. A. Rabel* CHAIRMAN.

APPROVED THIS 2<sup>ND</sup> DAY OF JULY 1959.  
 BOARD OF SUPERVISORS, ROCHESTER TOWNSHIP.  
*Robert Bigelow* CHAIRMAN.  
*Albert Hambling* SUPERVISOR.  
*Ed. A. Rabel* SUPERVISOR.

STATE OF MINNESOTA,  
 COUNTY OF OLMSTED, S. S.  
 FILED FOR RECORD THIS 15<sup>TH</sup> DAY OF JULY A.D. 1959 AT 2 O-CLOCK P.M.  
 AND RECORDED IN BOOK OF PLATS PAGE

*Harry H. Evans* REGISTER OF DEEDS.  
*By: David J. Clark, deputy*