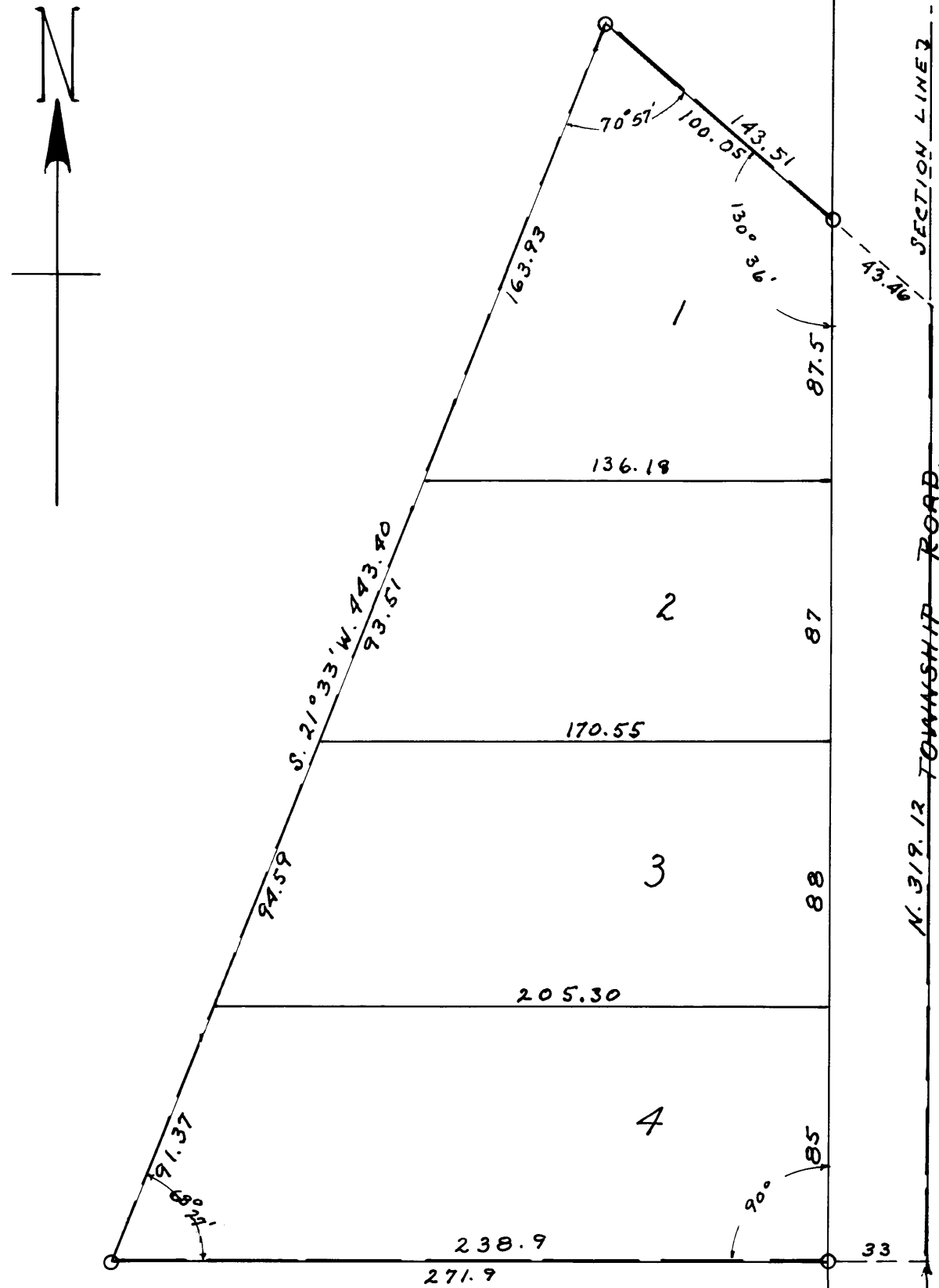


BURR OAK SUBDIVISION. OLMSTED COUNTY, MINNESOTA.

MONUMENTS SHOWN THUS ○.
MEASUREMENTS IN FEET AND DECIMALS.
BOUNDARY LINES SHOWN THUS ————
SCALE 1 INCH = 50 FEET.
1959.

John J. Kerr COUNTY SURVEYOR.
REGISTERED LAND SURVEYOR NO. 238.



APPROVED AS TO WATER SUPPLY AND SEWAGE DISPOSAL
THIS 6th DAY OF July 1959.

By *Victor O. Wilson, MD* HEALTH OFFICER.
ROCHESTER, OLMSTED COUNTY HEALTH UNIT.

APPROVED THIS 1st DAY OF July A.D. 1959
BOARD OF SUPERVISORS, MARION TOWNSHIP, OLMSTED COUNTY,
MINNESOTA. (APPROVED UNDER 1945 M.S.A. 349.12 AND
OVERRULING THE OLMSTED COUNTY PLANNING COMMISSION).

Paul Rubow CHAIRMAN.

Wm O'Neill SUPERVISOR.

Robert Schanfeldt SUPERVISOR.

STATE OF MINNESOTA,
COUNTY OF OLMSTED, S. S.
I, JOHN J. KERR COUNTY SURVEYOR IN AND FOR SAID COUNTY DO HEREBY CERTIFY THAT AT THE REQUEST OF ERNEST H. ZOBEL AND SHIRLEY I. ZOBEL (HIS WIFE) AND THE OLMSTED COUNTY SAVINGS AND LOAN ASSOCIATION (MORTGAGEE) A CORPORATION, OWNERS OF THE FOLLOWING DESCRIBED LANDS TO-WIT: COMMENCING AT THE SOUTHEAST CORNER OF SECTION 21, TOWNSHIP 106, NORTH OF RANGE 13 WEST AND RUNNING THENCE NORTH ALONG THE EAST LINE OF SECTION 21 A DISTANCE OF 1203.25 FEET FOR A PLACE OF BEGINNING, THENCE NORTH A DISTANCE OF 319.12 FEET, THENCE NORTH 49°24' WEST A DISTANCE OF 143.51 FEET, THENCE SOUTH 21°33' WEST A DISTANCE OF 443.4 FEET, THENCE EAST A DISTANCE OF 271.9 FEET TO THE PLACE OF BEGINNING, I HAVE SURVEYED AND PLATTED SAID LANDS INTO LOTS AND A PUBLIC ROAD SUCH SUBDIVISION TO BE KNOWN AND DESIGNATED AS "BURR OAK SUBDIVISION", I FURTHER CERTIFY THAT THE ACCOMPANYING PLAT IS A TRUE REPRESENTATION OF SAID SURVEY AS MADE, THAT THE LENGTHS OF ALL LINES ARE SHOWN IN FEET AND DECIMALS OF A FOOT, THAT OUTSIDE BOUNDARIES ARE SHOWN, THAT MONUMENTS FOR THE GUIDANCE OF FUTURE SURVEYS HAVE BEEN PLACED IN THE GROUND AT THE LOCATIONS MARKED THUS ○, THAT SAID LANDS HAVE NOT HERE-TO-FORE BEEN PLATTED, THAT THERE ARE NO WET LANDS THEREON, THAT ANGLES OF ENCLOSURE ARE SHOWN, AND THAT LAND TIES AND REFERENCE TO SECTION LINES AND CORNERS ARE SHOWN ON SAID PLAT.
DATED THIS 6th DAY OF JULY A.D. 1959.

John J. Kerr COUNTY SURVEYOR.
REGISTERED LAND SURVEYOR NO. 238.

DEDICATION.

WE THE UNDERSIGNED ERNEST H. ZOBEL AND SHIRLEY I. ZOBEL (HIS WIFE) AND THE OLMSTED SAVINGS AND LOAN ASSOCIATION (A CORPORATION) DO HEREBY CERTIFY THAT WE ARE RESPECTIVELY THE OWNERS AND MORTGAGEE OF THE LANDS DESCRIBED IN THE FOREGOING SURVEYORS CERTIFICATE, THAT WE HAVE CAUSED THE SAME TO BE SURVEYED AND PLATTED INTO LOTS AND A PUBLIC ROAD SUCH SUBDIVISION TO BE KNOWN AND DESIGNATED AS "BURR OAK SUBDIVISION", THAT WE DO FOR OURSELVES, OUR HEIRS, EXECUTORS, ADMINISTRATORS AND ASSIGNS HEREBY GRANT AND DEDICATE THE ROADS AS SHOWN ON THE ACCOMPANYING PLAT TO THE PUBLIC USE AS SUCH FOREVER, IN TESTIMONY WHEREOF WE HAVE SET OUR HANDS AND SEALS THIS 6th DAY OF JULY A.D. 1959.
IN THE PRESENCE OF

Isabelle M. Sauer WITNESS.

Ernest H. Zobel
ERNEST H. ZOBEL

Kathryn Donlan WITNESS.

Shirley I. Zobel
SHIRLEY I. ZOBEL

Lillian Sande WITNESS.

THE OLMSTED SAVINGS AND LOAN ASSOCIATION.

Isabelle M. Sauer WITNESS.

E. H. Gilk
PRESIDENT

Geo. Cook WITNESS.

James H. Klundworth
SECRETARY

ACKNOWLEDGEMENT.

STATE OF MINNESOTA,
COUNTY OF OLMSTED, S. S.

ON THIS 6th DAY OF JULY A.D. 1959 BEFORE ME A NOTARY PUBLIC WITHIN AND FOR SAID STATE AND COUNTY, PERSONALLY APPEARED ERNEST H. ZOBEL AND SHIRLEY I. ZOBEL (HIS WIFE) TO ME KNOWN TO BE THE PERSONS DESCRIBED IN AND WHO EXECUTED THE FOREGOING INSTRUMENT AND ACKNOWLEDGED THAT THEY EXECUTED THE SAME AS THEIR FREE ACT AND DEED.

James H. Klundworth NOTARY PUBLIC, OLMSTED COUNTY, MINNESOTA.
MY COMMISSION EXPIRES APRIL 27 1955.

CORPORATE ACKNOWLEDGEMENT.

STATE OF MINNESOTA,
COUNTY OF OLMSTED, S. S.

ON THIS 6th DAY OF JULY A.D. 1959 BEFORE ME A NOTARY PUBLIC WITHIN AND FOR SAID STATE AND COUNTY, PERSONALLY APPEARED *E. H. Gilk* AND *JAMES H. KLUNDWORTH* TO ME KNOWN, WHO, BEING EACH BY ME SWORN DID SAY THAT THEY ARE RESPECTIVELY THE PRESIDENT AND THE SECRETARY OF THE CORPORATION NAMED IN THE FOREGOING INSTRUMENT AND THAT THE SEAL AFFIXED TO SAID INSTRUMENT IS THE CORPORATE SEAL OF SAID CORPORATION, AND THAT SAID INSTRUMENT WAS SIGNED AND SEALED IN BEHALF OF SAID CORPORATION BY AUTHORITY OF ITS BOARD OF DIRECTORS, AND THE SAID *E. H. Gilk* AND *JAMES H. KLUNDWORTH* ACKNOWLEDGED SAID INSTRUMENT TO BE THE FREE ACT AND DEED OF SAID CORPORATION.

Geo. Cook NOTARY PUBLIC, OLMSTED COUNTY, MINNESOTA.
MY COMMISSION EXPIRES Mar. 26 1961.

STATE OF MINNESOTA,
COUNTY OF OLMSTED, S. S.

I, ROSS BROWNING COUNTY AUDITOR IN AND FOR SAID COUNTY DO HEREBY CERTIFY THAT THE ATTACHED PLAT WAS DULY APPROVED BY THE BOARD OF COUNTY COMMISSIONERS AT A MEETING HELD ON THIS 13th DAY OF July A.D. 1959. IN TESTIMONY WHEREOF I HAVE SIGNED MY NAME AND AFFIXED THE SEAL OF SAID COUNTY THIS 13th DAY OF July A.D. 1959.

Ross Browning COUNTY AUDITOR.

TAXES PAID FOR THE YEAR OF 1958.

Karl A. Peters COUNTY TREASURER.

TAXES PAID AND TRANSFER ENTERED THIS 16th DAY OF July A.D. 1959.

Ross Browning COUNTY AUDITOR.

STATE OF MINNESOTA,
COUNTY OF OLMSTED, S. S.

FILED FOR RECORD THIS 16th DAY OF July A.D. 1959. AT 10¹⁵ O'CLOCK A.M.
AND RECORDED IN BOOK OF PLATS PAGE

Harry H. Gurnea REGISTER OF DEEDS.
By *Wm. J. Gurnea* Deputy