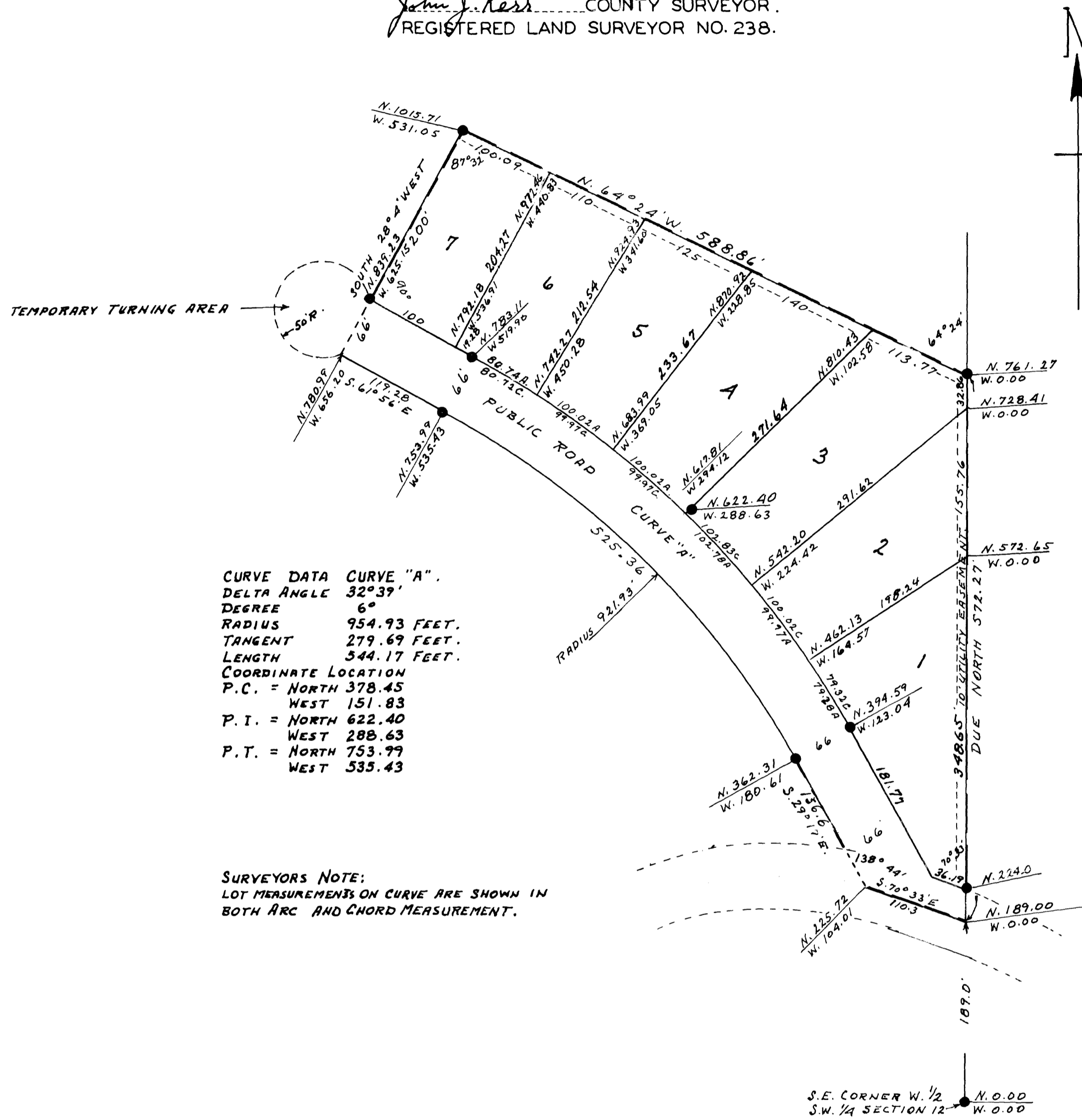


# PENZ SUBDIVISION. OLMSTED COUNTY, MINNESOTA.

MONUMENTS SHOWN THUS ●  
MEASUREMENTS IN FEET AND DECIMALS.  
SCALE 1 INCH = 100 FEET.  
1958.

*John J. Kerr* COUNTY SURVEYOR.  
REGISTERED LAND SURVEYOR NO. 238.



**CURVE DATA CURVE "A".**  
DELTA ANGLE 32°39'  
DEGREE 6°  
RADIUS 954.93 FEET.  
TANGENT 279.69 FEET.  
LENGTH 344.17 FEET.  
COORDINATE LOCATION  
P.C. = NORTH 378.45  
WEST 151.83  
P.I. = NORTH 622.40  
WEST 288.63  
P.T. = NORTH 753.79  
WEST 335.43

**SURVEYORS NOTE:**  
LOT MEASUREMENTS ON CURVE ARE SHOWN IN BOTH ARC AND CHORD MEASUREMENT.

APPROVED AS TO WATER SUPPLY AND SEWAGE DISPOSAL DECEMBER 22, 1958.  
*Viktor O. Wilson, M.D.* HEALTH OFFICER.  
ROCHESTER, OLMSTED COUNTY HEALTH UNIT.

APPROVED THIS 22<sup>ND</sup> DAY OF DECEMBER 1958.  
OLMSTED COUNTY PLANNING COMMISSION.  
BY *Ed. B. Kala* CHAIRMAN.

APPROVED THIS 22<sup>ND</sup> DAY OF DECEMBER 1958  
BOARD OF SUPERVISORS, CASCADE TOWNSHIP.  
*James G. Dodge* CHAIRMAN.  
*Carl M. Coffey* SUPERVISOR.  
*Clarence Posten* SUPERVISOR.

## SURVEYORS CERTIFICATE.

STATE OF MINNESOTA,  
COUNTY OF OLMSTED, S. S.  
I, JOHN J. KERR COUNTY SURVEYOR IN AND FOR SAID COUNTY DO HEREBY CERTIFY THAT AT THE REQUEST OF THE RIVERSIDE SAND AND GRAVEL COMPANY, A CORPORATION, OWNERS OF THE FOLLOWING DESCRIBED LANDS TO-WIT: THAT PART OF THE WEST 1/2 OF THE SOUTHWEST 1/4 OF SECTION 12, TOWNSHIP 107, NORTH OF RANGE 14 WEST IN OLMSTED COUNTY, MINNESOTA, ASSUMING THE EAST LINE OF THE WEST 1/2 OF THE SOUTHWEST 1/4 OF SAID SECTION TO BE A DUE NORTH AND SOUTH LINE AND COMMENCING FOR A PLACE OF BEGINNING AT A POINT IN THE EAST LINE OF SAID WEST 1/2 WHICH IS 189 FEET NORTH OF THE SOUTHEAST CORNER THEREOF AND RUNNING THENCE DUE NORTH ALONG THE EAST LINE OF SAID WEST 1/2 A DISTANCE OF 572.27 FEET, THENCE NORTH 64°24' WEST A DISTANCE OF 588.86 FEET, THENCE SOUTH 28°4' WEST A DISTANCE OF 266 FEET, THENCE SOUTH 61°56' EAST A DISTANCE OF 119.28 FEET, THENCE DEFLECTING TO THE RIGHT ON A CURVE, DELTA ANGLE 32°39', RADIUS 921.93 FEET A DISTANCE OF 525.36 FEET, THENCE TANGENT TO SAID CURVE SOUTH 29°17' EAST A DISTANCE OF 156.6 FEET TO THE CENTER OF A TOWNSHIP ROAD, THENCE SOUTH 70°33' EAST ALONG THE CENTER OF SAID ROAD A DISTANCE OF 110.3 FEET TO THE PLACE OF BEGINNING, I HAVE SURVEYED AND PLATTED SAID LANDS INTO LOTS AND PUBLIC ROADS SUCH SUBDIVISION TO BE KNOWN AND DESIGNATED AS "PENZ SUBDIVISION", I FURTHER CERTIFY THAT THE ACCOMPANYING PLAT IS A TRUE REPRESENTATION OF SAID SURVEY AS MADE, THAT ALL MEASUREMENTS ARE SHOWN IN FEET AND DECIMALS OF A FOOT, THAT MONUMENTS FOR THE GUIDANCE OF FUTURE SURVEYS HAVE BEEN PLACED IN THE GROUND AT THE LOCATIONS MARKED THUS ●, THAT SAID LANDS HAVE NOT HERE-TO-FORE BEEN SUBDIVIDED OR PLATTED, THAT THERE ARE NO WET LANDS THEREON, THAT COURSES AND DISTANCES AND ANGLES AND LAND TIES ARE SHOWN ON SAID PLAT.  
DATED THIS 20<sup>TH</sup> DAY OF DECEMBER 1958.

*John J. Kerr* COUNTY SURVEYOR.  
REGISTERED LAND SURVEYOR NO. 238.

## DEDICATION.

WE THE UNDERSIGNED RIVERSIDE SAND AND GRAVEL COMPANY, A CORPORATION DO HEREBY CERTIFY THAT WE ARE THE OWNERS OF THE LANDS DESCRIBED IN THE FOREGOING SURVEYORS CERTIFICATE, THAT WE HAVE CAUSED THE SAME TO BE SURVEYED AND PLATTED INTO LOTS AND PUBLIC ROADS, SUCH SUBDIVISION TO BE KNOWN AND DESIGNATED AS "PENZ SUBDIVISION", THAT WE DO FOR OURSELVES, OUR HEIRS, EXECUTORS, ADMINISTRATORS AND ASSIGNS HEREBY GRANT AND DEDICATE THE PUBLIC ROADS AS SHOWN ON THE ACCOMPANYING PLAT TO THE PUBLIC USE AS SUCH FOREVER, IN TESTIMONY WHEREOF WE HAVE SET OUR HANDS AND SEALS THIS 9<sup>TH</sup> DAY OF FEBRUARY 1959  
IN THE PRESENCE OF.

*John J. Kerr* WITNESS. RIVERSIDE SAND AND GRAVEL COMPANY.  
*Anna M. Sawyer* WITNESS. BY *Carlton F. Penz* PRESIDENT.  
*Ruth E. Penz* WITNESS. BY *Ruth E. Penz* SECRETARY.

## CORPORATE ACKNOWLEDGEMENT.

STATE OF MINNESOTA,  
COUNTY OF OLMSTED, S. S.  
ON THIS 9<sup>TH</sup> DAY OF Feb. 1959. BEFORE ME A NOTARY PUBLIC WITHIN AND FOR SAID COUNTY AND STATE, PERSONALLY APPEARED CARLTON F. PENZ AND RUTH E. PENZ TO ME PERSONALLY KNOWN TO BE THE OFFICERS TO-WIT: PRESIDENT AND SECRETARY RESPECTIVELY OF THE RIVERSIDE SAND AND GRAVEL COMPANY OF ROCHESTER, MINNESOTA, A CORPORATION, AND TO ME PERSONALLY KNOWN TO BE THE PERSONS WHO EXECUTED THE WITHIN AND FOREGOING INSTRUMENT IN BEHALF OF SAID CORPORATION AS SUCH, WHO BEING EACH BY ME DULY SWORN DID EACH FOR HIMSELF SAY THAT THEY ARE SUCH OFFICERS OF SAID CORPORATION DESCRIBED IN AND WHICH EXECUTED THE WITHIN AND FOREGOING INSTRUMENT, THAT THE SEAL AFFIXED TO THE WITHIN AND FOREGOING INSTRUMENT IS THE CORPORATE SEAL OF SAID CORPORATION AND THAT SAID INSTRUMENT WAS EXECUTED IN BEHALF OF SAID CORPORATION BY AUTHORITY OF ITS BOARD OF DIRECTORS AND SAID OFFICERS ACKNOWLEDGED SAID INSTRUMENT TO BE THE FREE ACT AND DEED OF SAID CORPORATION AND FURTHER ACKNOWLEDGED TO ME THAT SAID CORPORATION EXECUTED THE SAME.

*Anna M. Sawyer* NOTARY PUBLIC, OLSTED COUNTY, MINNESOTA.  
MY COMMISSION EXPIRES Oct. 15, 1962.

STATE OF MINNESOTA,  
COUNTY OF OLSTED, S. S.  
I, *Ross Sawyer* COUNTY AUDITOR IN AND FOR SAID COUNTY DO HEREBY CERTIFY THAT THE PLAT ATTACHED WAS DULY APPROVED BY THE BOARD OF COUNTY COMMISSIONERS AT A MEETING HELD ON THIS 9<sup>TH</sup> DAY OF FEBRUARY 1959. IN TESTIMONY WHEREOF I HAVE SIGNED MY NAME AND AFFIXED THE SEAL OF SAID COUNTY THIS 9<sup>TH</sup> DAY OF FEBRUARY A.D. 1959.

*Ross Sawyer* COUNTY AUDITOR.

TAXES PAID FOR THE YEAR OF 1958

*Kenneth Posten* COUNTY TREASURER.

TAXES PAID AND TRANSFER ENTERED THIS 27<sup>TH</sup> DAY OF FEBRUARY 1959

*Ross Sawyer* COUNTY AUDITOR.

STATE OF MINNESOTA,  
COUNTY OF OLSTED, S. S.  
FILED FOR RECORD THIS 27<sup>TH</sup> DAY OF FEBRUARY A.D. 1959 AT 10:40-CLOCK A.M.  
AND RECORDED IN BOOK OF PLATS PAGE

*Thomas M. ...* REGISTER OF DEEDS.