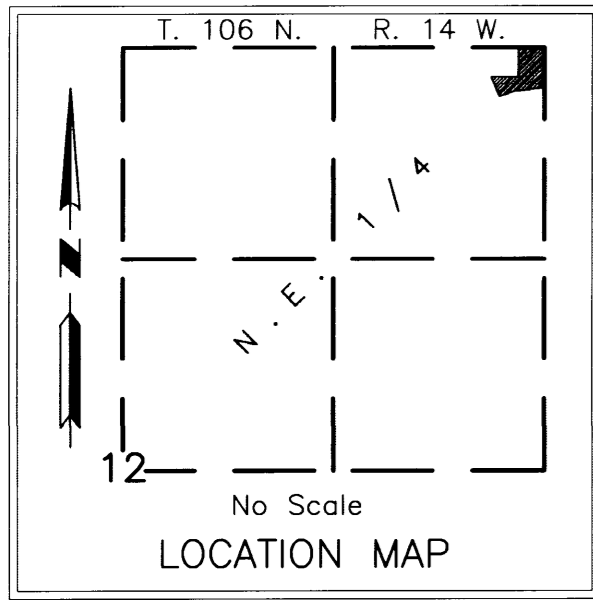


ASI SUBDIVISION



YAGGY COLBY ASSOCIATES
 ENGINEERS • ARCHITECTS
 SURVEYORS • PLANNERS
 LANDSCAPE ARCHITECTS
 717 THIRD AVENUE SOUTHEAST
 ROCHESTER, MINNESOTA 55904
 507-288-6464
 FAX 507-288-5058
 EMAIL INFO@YAGGY.COM

INSTRUMENT OF DEDICATION

KNOW ALL MEN BY THESE PRESENTS: That Accessible Space Inc., a Minnesota Nonprofit Corporation, owner and proprietor of the following described property situated in Olmsted County, State of Minnesota, to wit:

That part of the Northeast Quarter of the Northeast Quarter of Section 12, Township 106 North, Range 14 West, Olmsted County, Minnesota, described as follows:

Beginning at the northeast corner of said Northeast Quarter; thence westerly on a Minnesota State Plane Grid Azimuth from north of 268 degrees 42 minutes 02 seconds along the north line of said Northeast Quarter 164.68 feet; thence southerly 178 degrees 42 minutes 02 seconds azimuth 183.00 feet; thence westerly 268 degrees 42 minutes 02 seconds azimuth 170.00 feet to the northeasterly right-of-way line of County State Aid Highway No. 36, according to OLMSTED COUNTY RIGHT OF WAY PLAT NO. 100; thence southeasterly 131.53 feet along said northeasterly right-of-way line, and along a nontangential curve concave northeasterly, having a radius of 7579.44 feet, a central angle of 0 degrees 59 minutes 39 seconds, and a chord azimuth of 156 degrees 22 minutes 48 seconds azimuth; thence easterly 69 degrees 54 minutes 00 seconds azimuth 106.59 feet; thence easterly 82 degrees 33 minutes 02 seconds azimuth 184.35 feet to the east line of said Northeast Quarter; thence northerly 358 degrees 49 minutes 20 seconds azimuth along said east line 250.57 feet to the point of beginning.

Said tract contains 1.33 acres more or less.

Have caused the same to be surveyed and platted as ASI SUBDIVISION and do hereby dedicate the easement, as shown on this plat, for drainage and utility purposes only.

In witness whereof said Accessible Space Inc., a Minnesota Nonprofit Corporation, has caused these presents to be signed by its proper officer this 13th day of February, 2004.

Stephen VanderSchaaf
 Stephen VanderSchaaf
 President

STATE OF MINNESOTA
 COUNTY OF OLMSTED

The foregoing instrument was acknowledged before me this 13th day of February, 2004, by Stephen VanderSchaaf, President of Accessible Space Inc., a Minnesota Nonprofit Corporation, on behalf of the corporation.

Justin R. Parkin
 Justin R. Parkin
 Notary Public, Olmsted County, MN
 My Commission Expires 1-31-05

CITY APPROVAL
 STATE OF MINNESOTA
 COUNTY OF OLMSTED
 CITY OF ROCHESTER

I, Judy K. Scherr, City Clerk, in and for the City of Rochester, do hereby certify that on the 17th day of NOVEMBER, 2003, the accompanying plat was duly approved by the Common Council of the City of Rochester. In testimony whereof, I have hereunto signed my name and affixed the Seal of said City of Rochester this 24th day of FEBRUARY, 2004.

Judy K. Scherr
 Judy K. Scherr
 City Clerk

COUNTY SURVEYOR

I certify that this plat has been checked mathematically and that the plat conforms to applicable platting laws.

This 10 day of Feb, 2004

Edward P. Kuiste
 Edward P. Kuiste
 Olmsted County Surveyor

SURVEYOR'S CERTIFICATE

I do hereby certify that I have surveyed and platted the property described on this plat as ASI SUBDIVISION; that this plat is a correct representation of said survey; that all distances are correctly shown on said plat in feet and hundredths of a foot; that all monuments have been correctly placed in the ground as shown or will be correctly placed in the ground by February 06, 2005; that the outside boundary lines are correctly designated; and that there are no wetlands as defined in MS 505.02, Subd. 1, or public highways to be designated on said plat other than as shown.

Peter G. Oetliker
 Peter G. Oetliker
 Minnesota L.S. No. 41887

STATE OF MINNESOTA
 COUNTY OF OLMSTED

The foregoing Surveyor's Certificate was acknowledged before me this 10th day of February, 2004, by Peter G. Oetliker, L.S. No. 41887.

Justin R. Parkin
 JUSTIN R. PARKIN
 NOTARY PUBLIC - MINNESOTA
 My Commission Expires 1-31-2008

Justin R. Parkin
 Notary Public, Olmsted County, MN
 My Commission Expires 1-31-2008

COUNTY PROPERTY RECORDS AND LICENSING

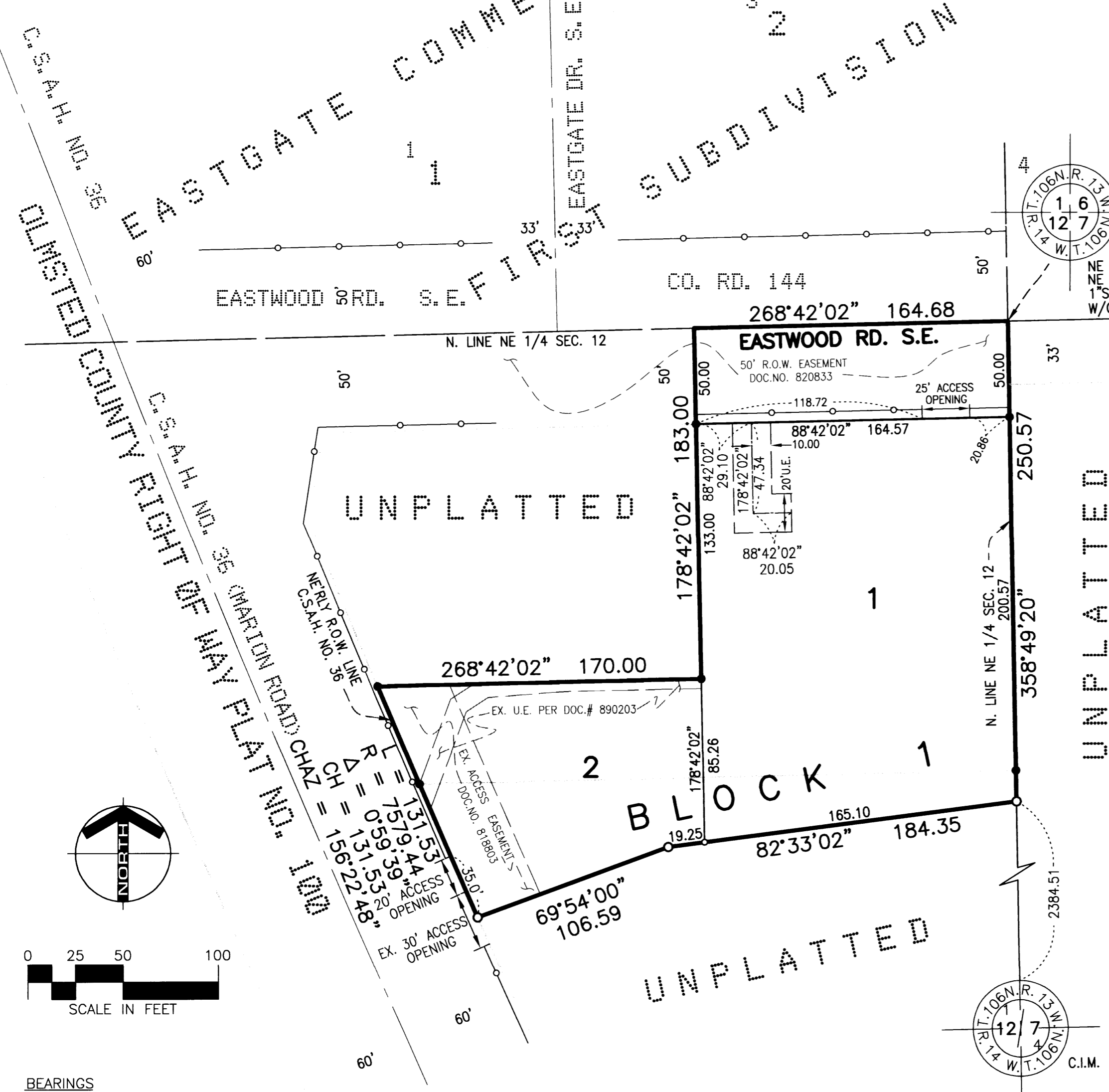
Taxes payable in the year 2004 on the land herein described have been paid, there are no delinquent taxes and transfer has been entered this 27th day of FEBRUARY, 2004.

I hereby certify that this instrument was filed in the Office of Property Records and Licensing for the record on this 27th day of FEBRUARY, 2004 at 9 o'clock A.m. and was duly recorded in Olmsted County Records.

Document Number **A-1012438**

Daniel J. Hall
 Daniel J. Hall
 Olmsted County Director of
 Property Records and Licensing

By *Wendy von Wald*
 Wendy von Wald
 Deputy



BEARINGS
 Bearings are Minnesota State Plane Grid Azimuths measured to the right from grid north.

MONUMENTS

- Set 1/2" Rebars
- Set 3/4" Iron Pipes
- Found Monuments (Pipe, Rod, Etc.)

All monuments set have a plastic cap stamped L.S. 41887.

UTILITY EASEMENT DEFINED

An unobstructed easement for the construction and maintenance of all necessary overhead, underground or surface public utilities, including rights to conduct drainage and trimming on said easement.

U.E. = UTILITY EASEMENT

CONTROLLED ACCESS DEFINED

Ingress and egress to, from or across the abutting roadway is restricted by the road authority pursuant to Minnesota State Statute 160.08.

○ — ○ = CONTROLLED ACCESS

PROJECT NUMBER: 8146
 COMPUTER FILE: 8146-PLAT01.dwg
 DATE: 02/06/04
 DRAFTSPERSON: JH