

DEERWOOD PARK

MARION TOWNSHIP, OLMSTED COUNTY, MINNESOTA.

MEASUREMENTS IN FEET AND DECIMALS

MONUMENTS SHOWN THUS •

SCALE 1 INCH = 100 FEET

DAVY ENGINEERING CO. 1958

Clayton Gordon Connell
REGISTERED LAND SURVEYOR

SURVEYORS CERTIFICATE

STATE OF MINNESOTA)
COUNTY OF OLMSTED) S.S.

I, CLAYTON G. CONNELL DO HEREBY CERTIFY THAT AT THE REQUEST OF THE FIRST NATIONAL BANK OF ROCHESTER, TRUSTEE, OWNER OF THE FOLLOWING DESCRIBED LANDS, BEGINNING AT A POINT 33 FEET SOUTH OF AND 33 FEET EAST OF THE NW CORNER OF SECTION 15, T106 N, R13 W, MARION TOWNSHIP, OLMSTED COUNTY, MINNESOTA, THENCE EAST ON A LINE PARALLEL TO THE NORTH LINE OF SECTION 15, A DISTANCE OF 1007.0 FT. SAID LINE BEING THE SOUTH R/W LINE OF THE TOWNSHIP ROAD. THENCE SOUTH 476 FEET. THENCE WEST ON A LINE PARALLEL TO THE NORTH LINE OF SECTION 15, A DISTANCE OF 196 FEET. THENCE S 73°47' W, 485 FEET. THENCE N 48°04' W, 246 FEET. THENCE S 89°53' W, 161.67 FEET, TO THE EAST LINE OF THE TOWNSHIP ROAD. THENCE N 0°07' W, ALONG SAID LINE 448 FEET TO THE POINT OF BEGINNING. I HAVE SURVEYED AND PLATTED SAID LANDS INTO LOTS AND PUBLIC ROADS, SUCH SUBDIVISION TO BE KNOWN AND DESIGNATED AS DEERWOOD PARK. I FURTHER CERTIFY THAT THE ACCOMPANYING PLAT IS A TRUE REPRESENTATION OF SAID SURVEY AS MADE, THAT MEASUREMENTS ARE SHOWN IN FEET AND DECIMALS, THAT MONUMENTS FOR THE GUIDANCE OF FUTURE SURVEYS HAVE BEEN PLACED IN THE GROUND AT THE LOCATIONS MARKED THUS • THAT SAID LANDS HAVE NOT HERETOFORE BEEN PLATTED, THAT THERE ARE NO WET LANDS THEREON AND THAT ANGLES OF ENCLOSURE ARE SHOWN ON SAID PLAT. DATED THIS 13th DAY OF December, 1958.

Clayton Gordon Connell
REGISTERED LAND SURVEYOR

SUBSCRIBED AND SWORN TO BEFORE ME A NOTARY PUBLIC, THIS 13th DAY OF December, 1958

MY COMMISSION EXPIRES NOTARY PUBLIC, OLMSTED COUNTY, MINNESOTA

DEDICATION

WE THE UNDERSIGNED, THE FIRST NATIONAL BANK OF ROCHESTER, TRUSTEE, DO HEREBY CERTIFY THAT WE ARE THE OWNERS OF THE LANDS DESCRIBED IN THE FOREGOING SURVEYORS CERTIFICATE. THAT WE HAVE CAUSED THE SAME TO BE SURVEYED AND PLATTED INTO LOTS AND PUBLIC ROADS, SUCH SUBDIVISION TO BE KNOWN AND DESIGNATED AS "DEERWOOD PARK" AND THAT WE DO FOR OURSELVES, OUR HEIRS, ADMINISTRATORS, EXECUTORS AND ASSIGNS HEREBY GRANT AND DEDICATE THE ROADS AS SHOWN ON THE ATTACHED PLAT TO THE PUBLIC USE AS SUCH FOREVER IN TESTIMONY WHEREAS WE HAVE SET OUR HAND AND SEAL THIS 13th DAY OF December, 1958

WITNESS

OWNER

THE FIRST NATIONAL BANK OF ROCHESTER, TRUSTEE

[Signature]

[Signature]
[Signature]

STATE OF MINNESOTA)
COUNTY OF OLMSTED) S.S.

ON THIS 13th DAY OF December, 1958 BEFORE ME A NOTARY PUBLIC IN AND FOR SAID COUNTY AND STATE PERSONALLY APPEARED THE OFFICERS OF THE FIRST NATIONAL BANK OF ROCHESTER, TRUSTEE, TO ME KNOWN TO BE THE PERSONS WHO EXECUTED THE FOREGOING INSTRUMENT AND ACKNOWLEDGED THAT THEY EXECUTED THE SAME AS THEIR FREE ACT AND DEED.

NOTARY PUBLIC, OLMSTED COUNTY, MINNESOTA

MY COMMISSION EXPIRES

STATE OF MINNESOTA)
COUNTY OF OLMSTED) S.S.

I, FRANCES L. UNDERLEAK, COUNTY AUDITOR IN AND FOR SAID COUNTY DO HEREBY CERTIFY THAT THE PLAT ATTACHED WAS DULY APPROVED BY THE BOARD OF COUNTY COMMISSIONERS AT A MEETING HELD ON THE 10th DAY OF Dec. 1958, IN TESTIMONY WHEREOF I HAVE SIGNED MY NAME AND AFFIXED THE SEAL OF SAID COUNTY THIS 10th DAY OF Dec. 1958

Frances L. Underleak COUNTY AUDITOR

TAXES PAID FOR THE YEAR OF 57

Karl H. Batis COUNTY TREASURER
Morris L. Heydon, Deputy

TAXES PAID AND TRANSFER ENTERED THIS 11th DAY OF Dec. 1958

Frances L. Underleak COUNTY AUDITOR

APPROVED AS TO WATER SUPPLY AND SEWAGE DISPOSAL *this 13th day of Dec. 1958*
William J. Johnson ENGINEER
ROCHESTER OLMSTED COUNTY HEALTH UNIT

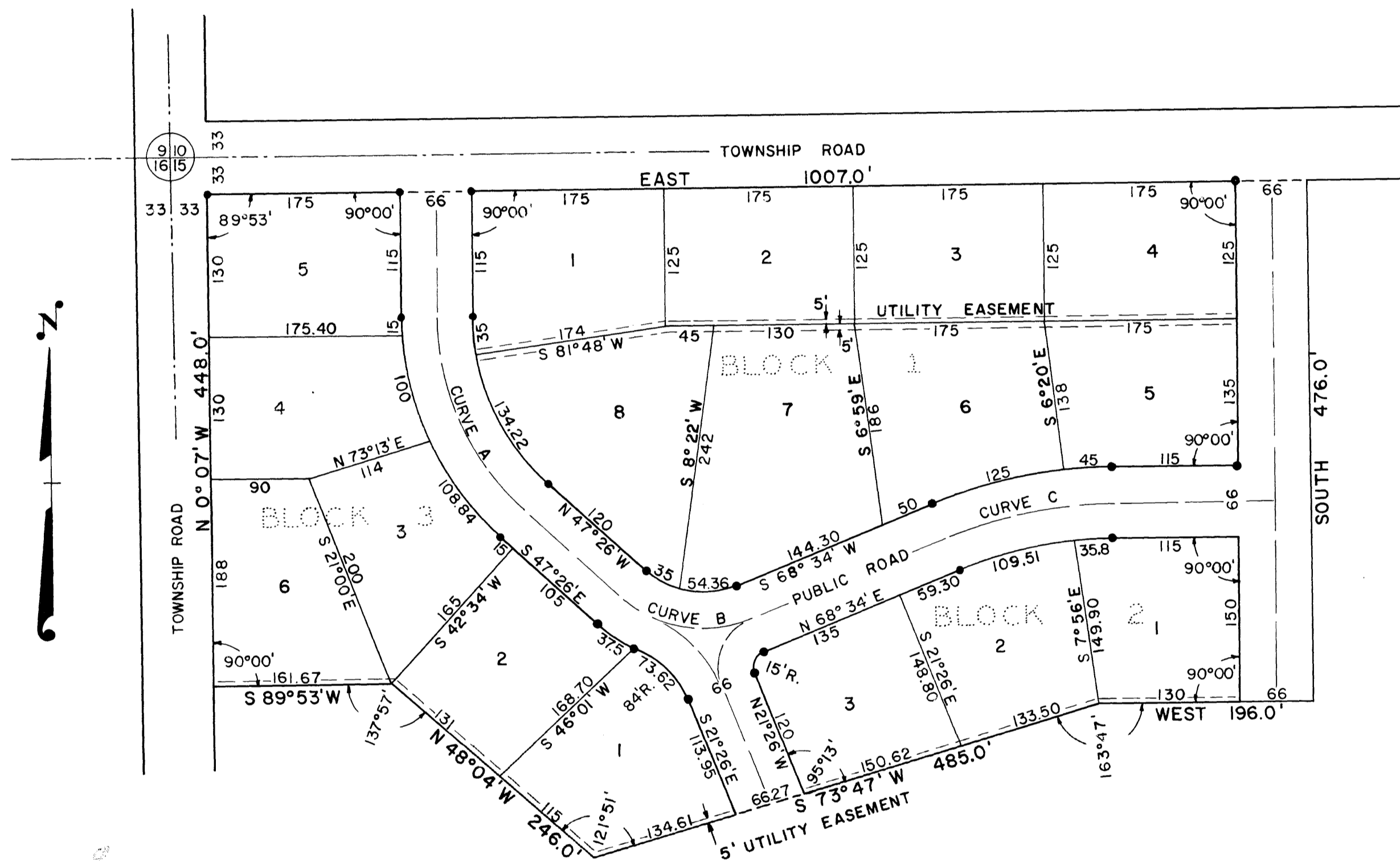
APPROVED THIS 13th DAY OF December, 1958
MARION TOWNSHIP BOARD OF SUPERVISORS

CHAIRMAN
SUPERVISOR

STATE OF MINNESOTA)
COUNTY OF OLMSTED) S.S.

FILED FOR RECORD THIS 13th DAY OF December, 1958, AT 10:20 O'CLOCK A.M. AND RECORDED IN BOOK OF PLATS PAGE

Tom Moore REGISTER OF DEEDS, OLMSTED COUNTY



CENTERLINE CURVE DATA

CURVE	DELTA ANGLE	DEGREE	RADIUS	TANGENT	LENGTH
A	47°26'	24°08'	237.38	104.37	196.53
B	64°00'	50°42'	113.00	70.61	126.22
C	21°26'	13°36'	421.42	79.75	157.65