

# DOOLEYS SUBDIVISION

SURVEYOR'S CERTIFICATE

I hereby certify that I have surveyed and platted the property described on this plat as DOOLEYS SUBDIVISION; that this plat is a correct representation of the survey; that all distances are correctly shown on the plat in feet and hundredths of a foot; that all monuments will be correctly placed in the ground as designated; that the outside boundary lines are correctly designated on the plat; and that there are no wet lands as defined in MS 505.02, Subd. 1, or public highways to be designated other than as shown.

James E. Swanson  
James E. Swanson, L.S.  
Minnesota License No. 11622

State of Minnesota  
County of Olmsted

The surveyor's certificate was subscribed and sworn to before me, a Notary Public, this 8 day of December, 2003.

Beth A. Davis  
Notary Public, Dodge County, Minnesota



My commission expires: 1-31-2005

COUNTY SURVEYOR

I certify that this plat has been checked mathematically, and that the plat conforms to the applicable laws, this 15 day of December, 2003.

Edward P. Kunkle  
Olmsted County Surveyor

CITY APPROVAL

State of Minnesota  
County of Olmsted  
City of Rochester

Valori Langseth Deputy  
I, Judy K. Seher, City Clerk, in and for the City of Rochester, do hereby certify that on the 3rd day of September, 2003, the accompanying plat was duly approved by the Common Council of the City of Rochester. In testimony thereof I have hereunto signed my name and affixed the seal of said City of Rochester this 21st day of December, 2003.

Valori Langseth  
Judy K. Seher, City Clerk  
Valori Langseth

PROPERTY RECORDS AND LICENSING

Taxes payable in the year 2003 on the land herein have been paid, there are no delinquent taxes and transfer has been entered this 31ST day of DECEMBER, 2003.

DOCUMENT NUMBER { A-1006832 }

I hereby certify that this instrument was filed in the Office of Property Records and Licensing for the record on this 31ST day of DECEMBER, 2003, at 4 o'clock P.M., and was duly recorded in the Olmsted County records.

Daniel G. Hall  
Director of Property Records & Licensing

Wendy von Wald  
Deputy

INSTRUMENT OF DEDICATION

KNOW ALL MEN BY THESE PRESENTS: That BECHER PROPERTIES SOUTH, LLC, A Minnesota limited liability company, owner and proprietor of the following described property situated in the City of Rochester, State of Minnesota, to wit:

Lot 3, Block 1, EASTGATE COMMERCIAL PARK FIRST SUBDIVISION, Rochester, Minnesota.  
Containing 52,861 square feet.

Has caused the same to be surveyed and platted as DOOLEYS SUBDIVISION.

In witness whereof said BECHER PROPERTIES SOUTH, LLC, A Minnesota limited liability company, has caused these presents to be signed by its Chief Manager this 12 day of DEC., 2003.

Edward P. Becher  
Edward P. Becher, Chief Manager

State of Minnesota  
County of Olmsted

The foregoing instrument was acknowledged before me this 12<sup>th</sup> day of December, 2003 by Edward P. Becher, Chief Manager of Becher Properties South, LLC on behalf of the Company.

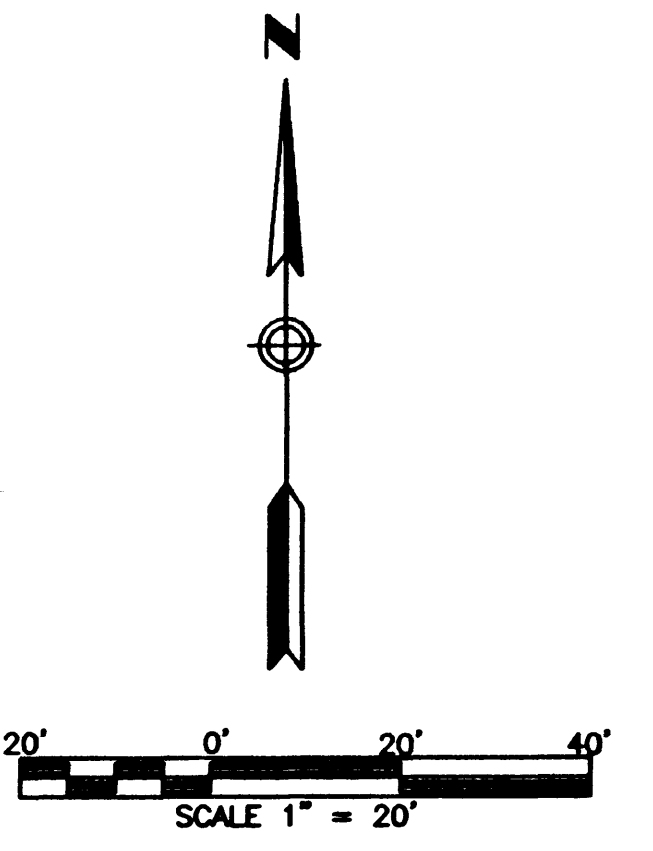
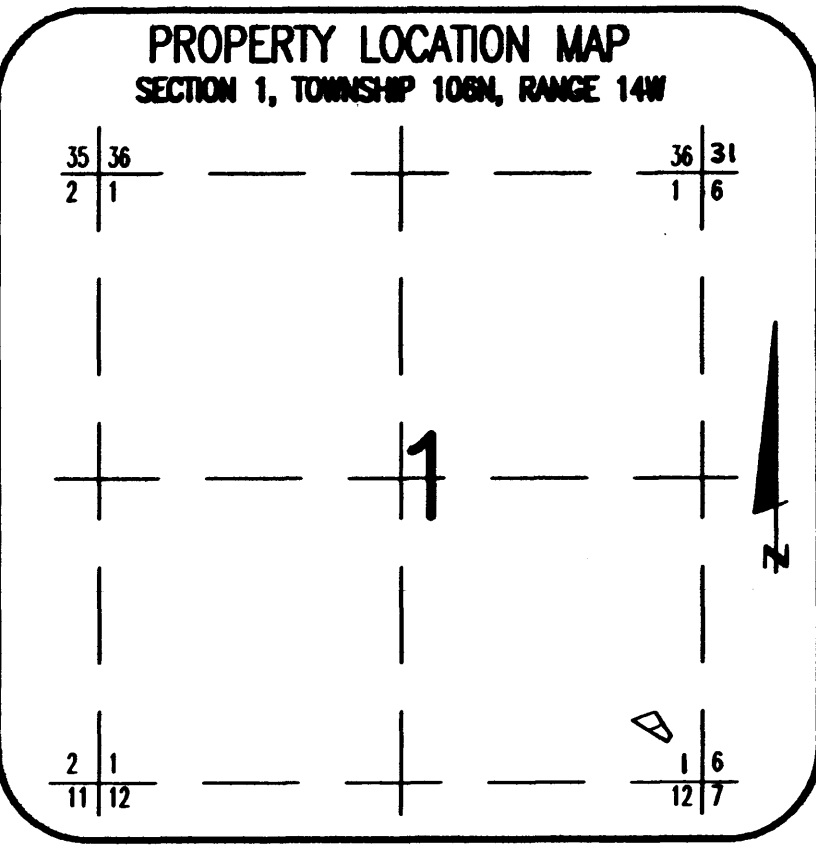
Sawyer L. Delvalle  
Notary Public, Olmsted County, Minnesota

My commission expires 1-31-2005

923A

# DOOLEYS SUBDIVISION

T.H. NO. 14  
N70°30'00"E  
250.00



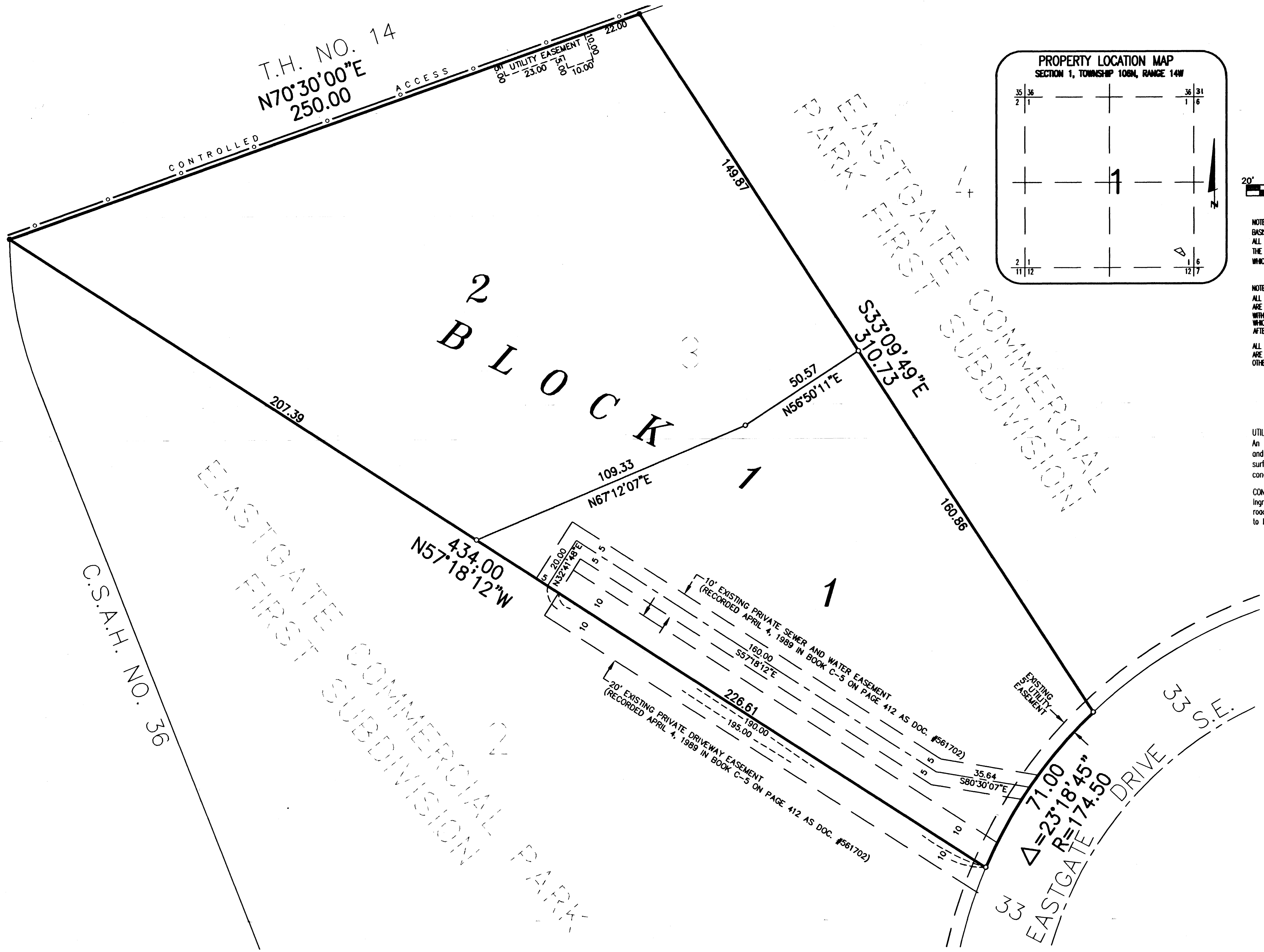
NOTE:  
BASIS OF BEARING SYSTEM:  
ALL BEARINGS ARE IN RELATIONSHIP WITH  
THE SOUTH LINE SW 1/4 SEC 6-106-13,  
WHICH IS ASSUMED S89°39'00"E

NOTE:  
ALL MONUMENTS SHOWN THIS: ○  
ARE 5/8" I.D. CAPPED PIPES  
WITH LICENSE NO. 11622  
WHICH WILL BE SET WITHIN 1 YEAR  
AFTER RECORDING OF THIS PLAT.

ALL MONUMENTS SHOWN THIS: ●  
ARE FOUND 5/8" PIPE UNLESS  
OTHERWISE NOTED.

UTILITY EASEMENT (U.E.) defined:  
An unobstructed easement for the construction  
and maintenance of all necessary underground and  
surface public utilities including rights to  
conduct drainage and trimming on said easement.

CONTROLLED ACCESS defined:  
Ingress or egress to, from, or across the abutting  
roadway is restricted by the road authority pursuant  
to Minnesota State Statute 160.08.



923 B

PREPARED BY:  
MCGUIE & BETTS, INC.  
CONSULTING ENGINEERS  
PLANNERS, LAND SURVEYORS  
ROCHESTER, MINNESOTA