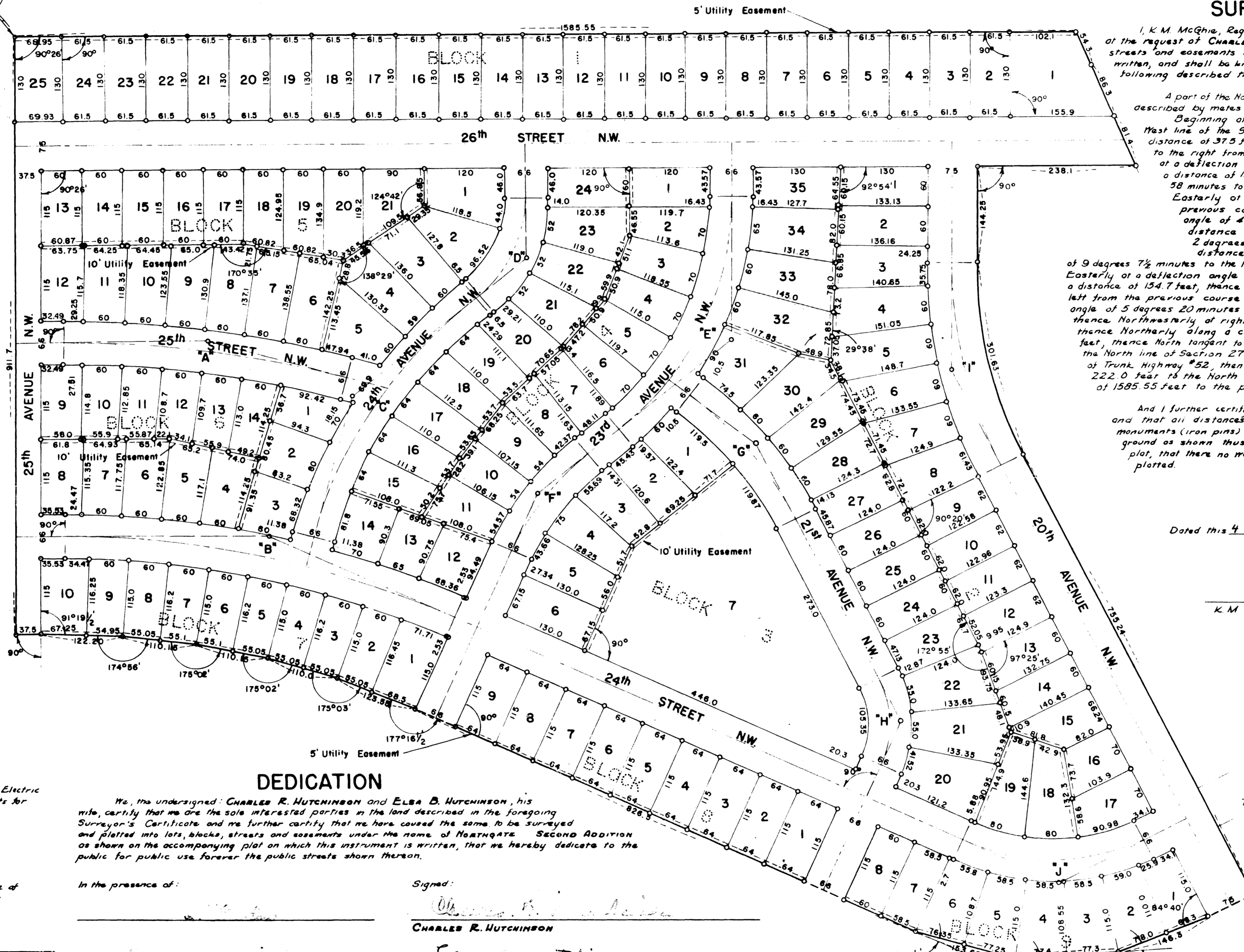
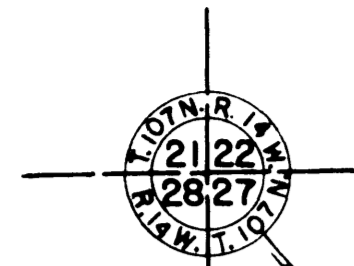


NORTHGATE SECOND ADDITION

SURVEYOR'S CERTIFICATE



I, K. M. McQuie, Registered Civil Engineer and Land Surveyor, do hereby certify that at the request of CHARLES R. HUTCHINSON, I have surveyed and plotted into lots, blocks, streets and easements as shown on the accompanying plat on which this certificate is written, and shall be known and designated as NORTHGATE SECOND ADDITION, the following described tract of land:

A part of the Northwest quarter of Section 27 Township 107 North Range 14 West described by metes and bounds as follows:
 Beginning at the Northwest corner of said Section, thence South along the West line of the Section a distance of 911.7 feet, thence East at right angles a distance of 37.5 feet, thence Easterly at a deflection angle of 1 degree 18 1/2 minutes to the right from the previous course a distance of 122.2 feet, thence Easterly at a deflection angle of 5 degrees 4 minutes to the right from the previous course a distance of 110.15 feet, thence Easterly at a deflection angle of 4 degrees 58 minutes to the right from the previous course a distance of 110.15 feet, thence Southeasterly at a deflection angle of 4 degrees 37 minutes to the right from the previous course a distance of 123.55 feet, thence Southeasterly at a deflection angle of 2 degrees 43 1/2 minutes to the right from the previous course a distance of 226.5 feet, thence Southeasterly at a deflection angle of 9 degrees 7 1/2 minutes to the left from the previous course a distance of 153.6 feet, thence Easterly at a deflection angle of 19 degrees 3 minutes to the left from the previous course a distance of 154.7 feet, thence Northeasterly at a deflection angle 18 degrees 4 1/2 minutes to the left from the previous course a distance of 146.3 feet, thence Northeasterly at a deflection angle of 5 degrees 20 minutes to the left from the previous course a distance of 75.0 feet, thence Northeasterly at right angles to the previous course a distance of 75.2 feet, thence Northerly along a curve to the right of 636.57 feet radius, a distance of 301.63 feet, thence North tangent to the curve a distance of 144.25 feet, thence East parallel with the North line of Section 27 a distance of 238.1 feet to the Westerly right-of-way line of Trunk Highway #52, thence Northwesterly along said right-of-way line a distance of 222.0 feet to the North line of the Section, thence West on the Section line a distance of 1585.55 feet to the place of beginning.

And I further certify that the said plat is a true and correct record of the survey and that all distances are correctly shown in feet and decimals of feet, that monuments (iron pins) for the guidance of future surveys have been placed on the ground as shown thus (o), that the outside boundaries are correctly shown on the plat, that there are no wet lands thereon and that said plat has not been previously plotted.

Dated this 4 day of April 1958 A.D.

K. M. McQuie
 K. M. McQuie, Registered Civil Engineer & Land Surveyor Reg. #1613

Subscribed and sworn before me a notary public this 4th day of April 1958 A.D.
 My commission expires April 1962

Walter Aichroff
 Notary Public, Olmsted County, Minnesota

Taxes paid and transfer entered this 2 day of 19 A.D.

County Auditor

Taxes for the year 1957 on the lands described within are paid

Karl W. Pater
 County Treasurer

State of Minnesota } s.s.
 County of Olmsted }
 Filed for record this 21 day of November 1958 A.D. at 1 o'clock P. M., in book _____ of plates on page _____

State of Minnesota } s.s.
 County of Olmsted }
 On this 15 day of June 1958 A.D., before me, a Notary Public in and for said county, personally appeared RICHARD P. PIKE and ALBERT D. STANTON, to me personally known, who being each by me duly sworn, did say that they are respectively Assistant Vice-President and Cashier of the NORTHWESTERN NATIONAL BANK OF ROCHESTER, and that the seal affixed to this instrument is the Corporate Seal of said Corporation and that said instrument was signed and sealed in its behalf by authority of its members and said RICHARD P. PIKE and ALBERT D. STANTON acknowledged said instrument to be the free act and deed of said Corporation.
My commission expires June 1963 A.D.
 Notary Public, Olmsted County, Minnesota

DEDICATION

We, the undersigned CHARLES R. HUTCHINSON and ELSA B. HUTCHINSON, his wife, certify that we are the sole interested parties in the land described in the foregoing Surveyor's Certificate and we further certify that we have caused the same to be surveyed and plotted into lots, blocks, streets and easements under the name of NORTHGATE SECOND ADDITION as shown on the accompanying plat on which this instrument is written, that we hereby dedicate to the public for public use forever the public streets shown thereon.

In the presence of:
Charles R. Hutchinson
 CHARLES R. HUTCHINSON
Elsa B. Hutchinson
 ELSA B. HUTCHINSON
 NORTHWESTERN NATIONAL BANK OF ROCHESTER
 RICHARD P. PIKE (Asst. Vice-President)
 ALBERT D. STANTON (Cashier)

State of Minnesota } s.s.
 County of Olmsted }
 On this 16 day of August 1958 A.D. before me a notary public in and for said county, personally appeared CHARLES R. HUTCHINSON and ELSA B. HUTCHINSON, his wife, to me known to be the persons described in and who executed the foregoing instrument and acknowledged that they executed the same as their free act and deed.
 My commission expires August 22 1963
Notary Public, Olmsted County, Minnesota

State of Minnesota } s.s.
 County of Olmsted }
 City of Rochester }
 I, Elfrida Reiter, City Clerk in and for the City of Rochester, do hereby certify that on the 4th Day of August 1958 A.D. the accompanying plat was duly approved by the Common Council of the City of Rochester. In testimony thereof I hereunto signed my name and affixed the seal of said City of Rochester this 25th day of Nov 1958
Elfrida Reiter
 City Clerk

Utility Easement Defined:
 Easement for Construction and Maintenance of Electric Power and Telephone Lines and Trimming rights for said Maintenance.

Underground Easement Defined:
 Easement for Construction and Maintenance of Sanitary and Storm Sewers and rights as defined in Utility Easement.

CURVE	A	D	T	L	R
A	15°00'	3°30'	215.51	428.37	1637.02
B	24°00'	4°00'	304.47	600.0	1432.4
C	35°44'	8°00'	230.87	446.67	716.2
D	50°57 1/2'	30°00'	91.01	169.86	190.99
E	50°57 1/2'	12°30'	216.43	407.67	458.37
F	26°33'	14°00'	96.56	189.64	409.26
G	25°24'	10°00'	129.12	264.0	572.98
H	51°15'	36°00'	72.32	134.87	150.78
I	27°09'	8°30'	162.76	319.41	674.07
J	51°34'	18°00'	153.76	286.48	318.31

Scale: 1" = 100'