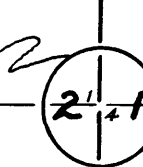


# CHESTER HEIGHTS

CHESTER, MINNESOTA



## SURVEYOR'S CERTIFICATE

I, K. M. McGhie, Registered Civil Engineer and Land Surveyor, do hereby certify that at the request of ROBERT CONWAY, I have surveyed and platted into lots, blocks, streets, and easements as shown on the accompanying plat on which this certificate is written and shall be known and designated as CHESTER HEIGHTS the following described tract of land:

A part of the south one-half of the southeast quarter of Section 2, Township 106 north, Range 13 west.

Beginning at a point on the south line of said southeast quarter 846.1 feet east of the southwest corner of said southeast quarter, thence north at a deflection angle of 90 degrees 30 minutes to the left from previous described course a distance of 1312.6 feet to the north line of the south one-half of said southeast quarter, thence east along said north line a distance of 1759.2 feet to the east line of said southeast quarter, thence south along said east line a distance of 994.4 feet, thence west parallel to said south line a distance of 458.0 feet, thence south parallel to said east a distance of 321.0 feet to the south line of the southeast quarter, thence west along said south line a distance of 1313.5 feet to the place of beginning.

And I further certify that said plat is a true and correct record of the survey and that all distances are correctly shown in feet and decimals of feet, that monuments (iron pins) for the guidance of future surveys have been placed on the ground as shown thus (°), that the outside boundaries are correctly shown on the plat, that there are no wet lands thereon except as shown on said plat and that said plat has not been previously platted.

Dated this 22 day of September 1958 A.D. K. M. McGhie  
 K. M. McGhie Registered Civil Engineer  
 and Land Surveyor No. 1613

State of Minnesota } s.s.  
 County of Olmsted }  
 Subscribed and sworn before me a notary public this 22 day of July 1958 A.D. R. Cunningham  
 Notary Public, Olmsted County Minn.

My commission expires Oct 9 1961

## DEDICATION

We the undersigned: ROBERT M. CONWAY and MARGARET CONWAY, his wife, certify that we are the sole interested parties in the land described in the foregoing Surveyor's Certificate and we further certify that we have caused the same to be surveyed and platted into lots, blocks, and streets under the name of CHESTER HEIGHTS as shown on the accompanying plat on which this instrument is written, that we hereby dedicate to the public for public use forever the public streets shown thereon.

In the presence of: [Signature]  
[Signature]  
 Signed: [Signature]  
 Robert M. Conway  
[Signature]  
 Margaret Conway

State of Minnesota } s.s.  
 County of Olmsted }  
 On this 22 day of July 1958 before me a Notary Public in and for said county, personally appeared Robert M. Conway and Margaret Conway his wife, to me known to be the persons described in and who executed the foregoing instrument and acknowledged that they executed the same as their free act and deed.

My commission expires January 1962  
[Signature]  
 Notary Public, Olmsted County Minn.

Taxes for the year 1957 on the lands described within are paid

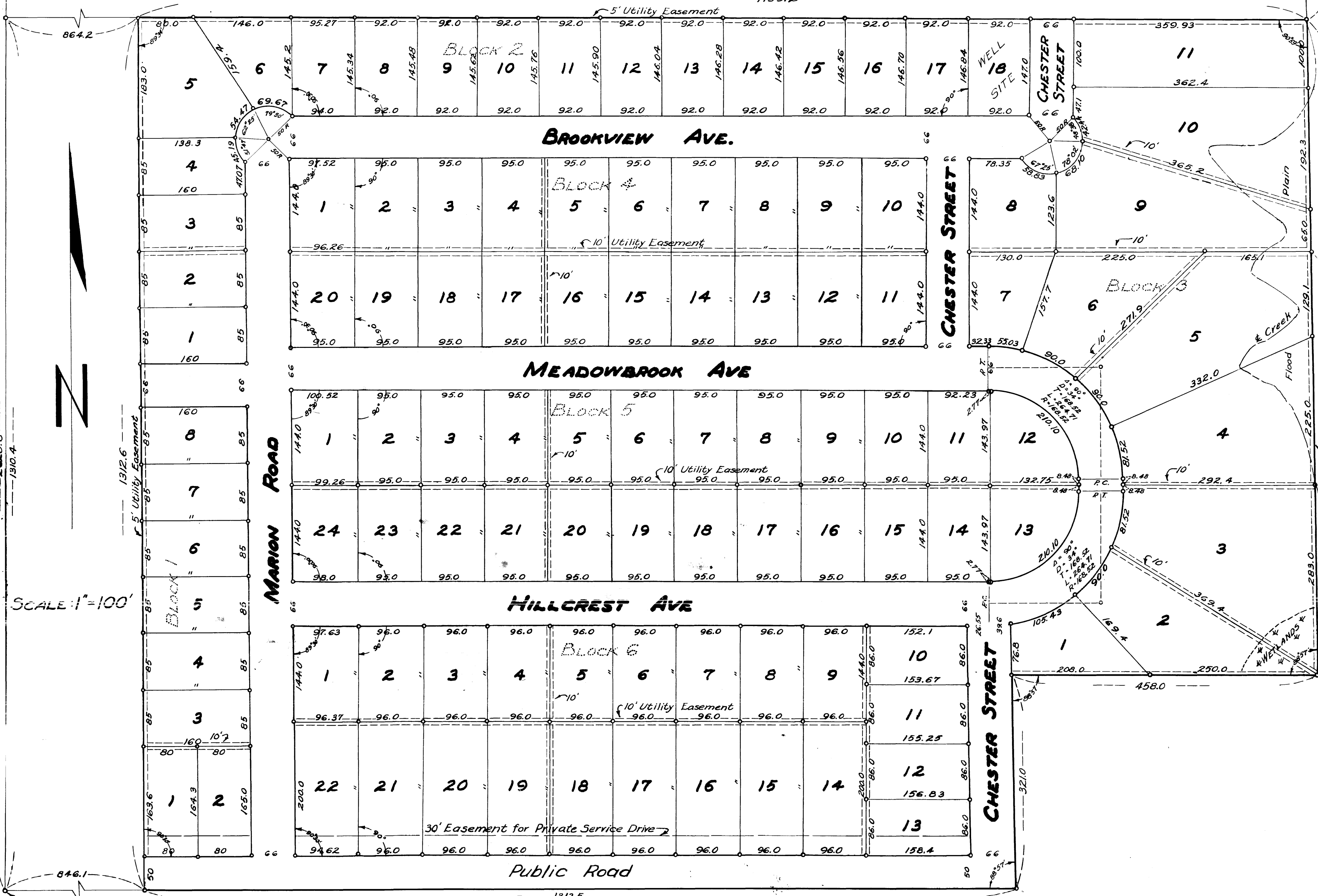
Karl Hester  
 County Treasurer

Taxes paid and transfer entered this 24 day of July 1958 A.D.

Francis L. Underleak  
 County Auditor

State of Minnesota } s.s.  
 County of Olmsted }  
 Filed for record this 24 day of July 1958 A.D., at 4 o'clock P.M. in Book \_\_\_ of Plats on page \_\_\_ Instrument No. \_\_\_

Tom Moss  
 Register of Deeds



Utility Easement defined:  
 Easement for construction and maintenance of Electric power and Telephone lines and trimming rights as necessary for said maintenance.

Approved this 22<sup>nd</sup> day of September 1958 A.D. for sewage disposal and water supply.  
Viktor J. Wilson, M.D., Health Officer  
 Rochester, Olmsted County Health Unit

State of Minnesota } s.s.  
 County of Olmsted }  
 I, Francis L. Underleak, County Auditor in and for said county do hereby certify that the annexed plat was duly approved by the Board of County Commissioners at a meeting held on the 24<sup>th</sup> day of July 1958 in testimony whereof I have signed my name and affixed the seal of said county this 24<sup>th</sup> day of July 1958 A.D.  
Francis L. Underleak  
 County Auditor

We the members of Township Board of Supervisors for Marion Township, Olmsted County, Minnesota, do hereby certify that we have approved the accompanying plat. In testimony whereof we have signed our names this 24 day of July 1958 A.D.

Wash Carson Chairman  
Paul Puhos Supervisor  
Wm. O. Hall Supervisor