

GLENDALE HILLS FOURTH

SURVEYOR'S CERTIFICATE

I hereby certify that I have surveyed and platted the property described on this plat as GLENDALE HILLS FOURTH; that this plat is a correct representation of the survey; that all distances are correctly shown on the plat in feet and hundredths of a foot; that all monuments will be correctly placed in the ground as designated; that the outside boundary lines are correctly designated on the plat; and that there are no wet lands as defined in MS 505.02, Subd. 1, or public highways to be designated other than as shown.

James E. Swanson
James E. Swanson, L.S.
Minnesota License Number 11622

State of Minnesota
County of Dodge Olmsted

The surveyor's certificate was subscribed and sworn to before me, a Notary Public, this 24 day of June, 2003.

Beth A. Davis
Notary Public, Olmsted County, Minnesota
My commission expires Dodge 1-31-2005



COUNTY SURVEYOR

I certify that this plat has been checked mathematically and that the plat conforms to the applicable laws, this 24 day of June, 2003.

Edward P. Knike
County Surveyor

CITY APPROVAL

State of Minnesota
County of Olmsted
City of Rochester

I, Judy K. Scherr, City Clerk, in and for the City of Rochester, do hereby certify that on the 17th day of MARCH, 2003, the accompanying plat was duly approved by the Common Council of the City of Rochester. In testimony thereof I have hereunto signed my name and affixed the seal of said City of Rochester this 8th day of July, 2003.

Judy K. Scherr
City Clerk

PROPERTY RECORDS AND LICENSING

Taxes payable in the year 2003 on the land herein described have been paid, there are no delinquent taxes and transfer has been entered this day 9th of July, 2003.

DOCUMENT NUMBER A-977290

I hereby certify that this instrument was filed in the Office of Property Records and Licensing for the record this 9th day of July, 2003, at 11 o'clock A.M., and was duly recorded in the Olmsted County records.

Kaniel G. Hall
Director of Property Records & Licensing

Wendy von Wald
Deputy

INSTRUMENT OF DEDICATION

KNOW ALL MEN BY THESE PRESENTS: That Rocky Creek of Rochester, L.L.C., a Limited Liability Corporation, owner and proprietor and Home Federal Savings Bank, a Federally Chartered Stock Savings Bank, mortgagee of the following described property situated in the City of Rochester, State of Minnesota, to wit:

That part of the South Half of the Southeast Quarter of Section 24, Township 107 North, Range 14 West, Olmsted County, Minnesota, described as follows:

Beginning at the southeast corner of the Southeast Quarter of said Section 24; thence South 89 degrees 41 minutes 53 seconds West, assumed bearing, along the south line of said Southeast Quarter, 1175.44 feet to the southeast corner of Lot 8, Block 1, GLENDALE HILLS THIRD (the next 4 courses are along the easterly and northeasterly lines of said GLENDALE HILLS THIRD); thence North 00 degrees 18 minutes 07 seconds West, 210.00 feet; thence North 27 degrees 00 minutes 49 seconds East, 164.56 feet; thence North 47 degrees 17 minutes 40 seconds West, 502.97 feet; thence North 23 degrees 39 minutes 40 seconds West, 153.11 feet to the southeast corner of Lot 3, Block 3, GLENDALE HILLS (the next 5 courses are along the southerly lines of said GLENDALE HILLS and of GLENDALE HILLS SECOND); thence North 89 degrees 42 minutes 20 seconds East, 720.00 feet; thence South 77 degrees 56 minutes 24 seconds East, 43.56 feet; thence South 55 degrees 47 minutes 40 seconds East, 74.54 feet; thence South 61 degrees 12 minutes 58 seconds East, 306.11 feet; thence South 76 degrees 33 minutes 53 seconds East, 438.87 feet to the east line of said Southeast Quarter; thence South 01 degree 26 minutes 28 seconds East, along said east line, 535.28 feet to the point of beginning.

Containing 21.00 acres more or less.

have caused the same to be surveyed and platted as GLENDALE HILLS FOURTH and do hereby donate and dedicate to the public for the public use forever the thoroughfare and cul-de-sac, and also dedicate the easements as shown on this plat for drainage and utility purposes only.

In witness whereof said Rocky Creek of Rochester, L.L.C., a Limited Liability Corporation, has caused these presents to be signed by its Chief Manager this 26 day of June, 2003.

Rocky Creek of Rochester, L.L.C.

By Roger A. Carlson
Roger A. Carlson, Chief Manager

State of Minnesota
County of Olmsted

The foregoing instrument was acknowledged before me this 26 day of June, 2003, by Roger A. Carlson, Chief Manager of Rocky Creek of Rochester, L.L.C., a Limited Liability Corporation, on behalf of the corporation.

Beth A. Davis
Notary Public, Olmsted County, Minnesota
Dodge



My commission expires 1-31-2005

Home Federal Savings Bank

In witness whereof said Home Federal Savings Bank, a Federally Chartered Stock Savings Bank, has caused these presents to be signed by its proper officers this 25th day of June, 2003.

By Brad T. Becker Carla J. Kilpatrick

State of Minnesota
County of Olmsted

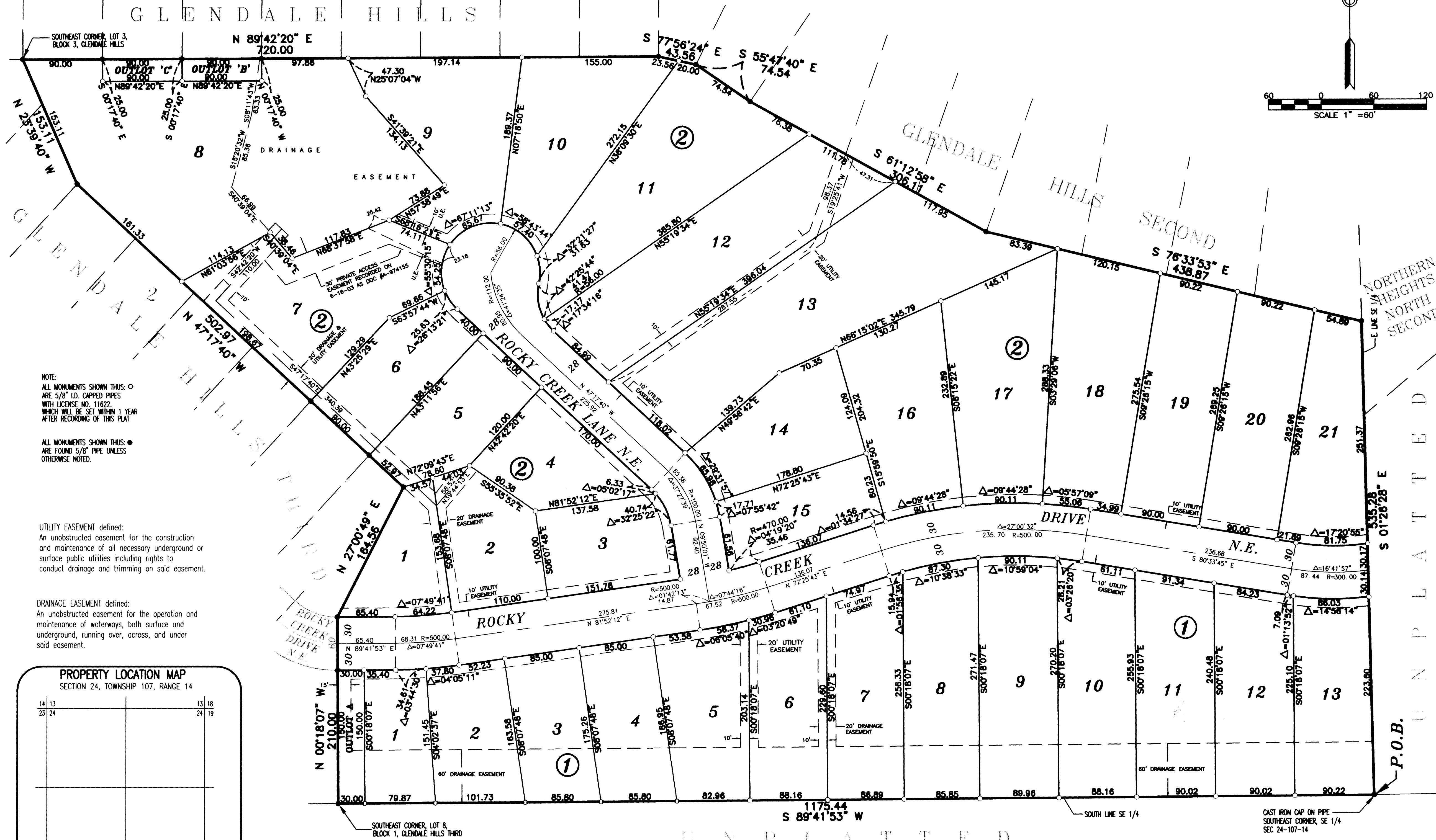
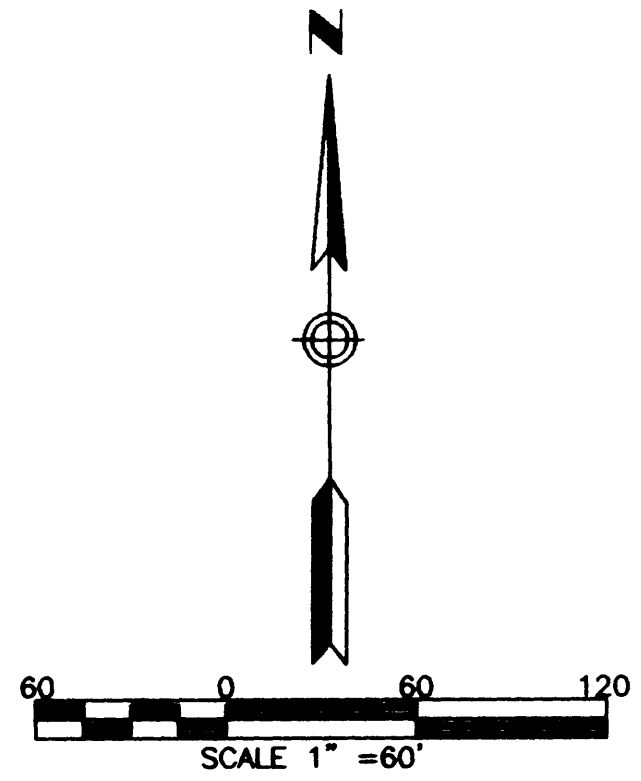
The foregoing instrument was acknowledged before me this 25th day of June, 2003, by Brad T. Becker and Carla J. Kilpatrick officers of Home Federal Savings Bank, on behalf of the Bank.

Patricia M. Ruess
Notary Public, Olmsted County, Minnesota



My Commission expires 1-31-2007

GLENDALE HILLS FOURTH

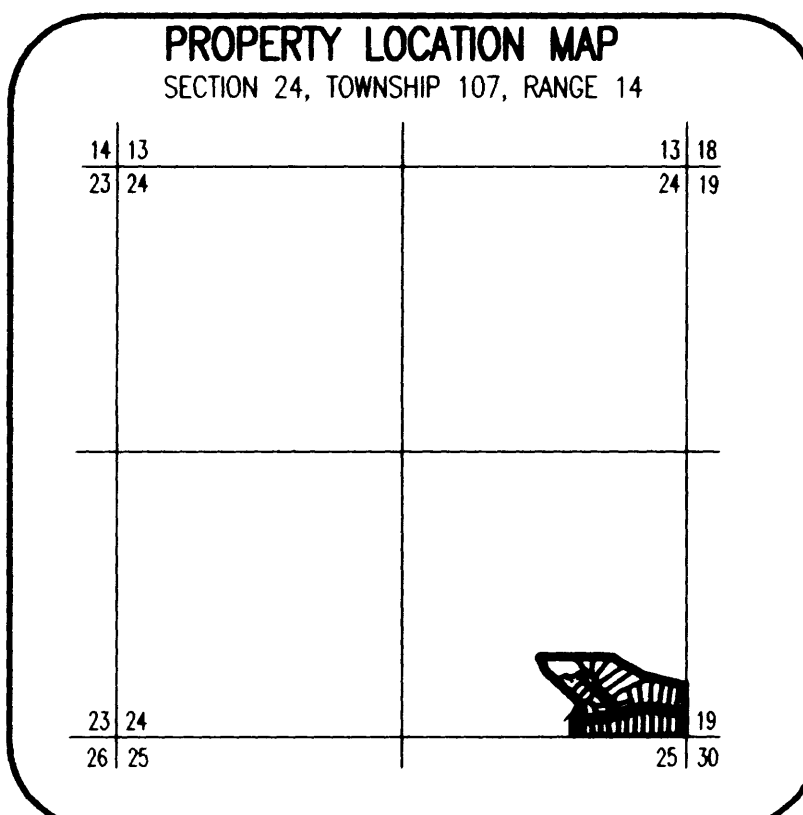


NOTE:
 ALL MONUMENTS SHOWN THUS: ○
 ARE 5/8" I.D. CAPPED PIPES
 WITH LICENSE NO. 11622,
 WHICH WILL BE SET WITHIN 1 YEAR
 AFTER RECORDING OF THIS PLAT

ALL MONUMENTS SHOWN THUS: ●
 ARE FOUND 5/8" PIPE UNLESS
 OTHERWISE NOTED.

UTILITY EASEMENT defined:
 An unobstructed easement for the construction
 and maintenance of all necessary underground or
 surface public utilities including rights to
 conduct drainage and trimming on said easement.

DRAINAGE EASEMENT defined:
 An unobstructed easement for the operation and
 maintenance of waterways, both surface and
 underground, running over, across, and under
 said easement.



UNPLATTED

NORTHERN HEIGHTS NORTH SECOND
 UNPLATTED
 P.O.B.

8768
 PREPARED BY:
 MCGHEE & BETTS, INC.
 CONSULTING ENGINEERS
 PLANNERS, LAND SURVEYORS
 ROCHESTER, MINNESOTA