

TERMAR FOURTH ADDITION

Surveyor's Certificate

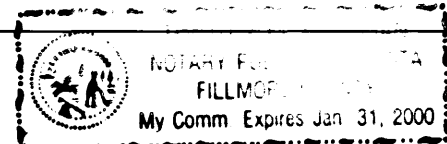
I hereby certify that I have surveyed and platted the property described on this plat as TERMAR FOURTH ADDITION; that this plat is a correct representation of the survey; that all distances are correctly shown on the plat in feet and hundredths of a foot; that all monuments have been correctly placed in the ground as shown; that the outside boundary lines are correctly designated on the plat; and that there are no public highways to be designated than as shown.

Geoffry G Griffin, R.L.S.  
Minnesota License Number 21940

State of Minnesota  
County of Fillmore  
The surveyor's certificate was subscribed and sworn to before me, a Notary Public, this 24 day of November, 1996.

Notary Public, Fillmore County, Minnesota

My commission expires:



County Surveyor

I certify that this plat has been checked mathematically and that the plat conforms to the applicable laws, this 5 day of Nov, 1996.

Edward P. Knisell  
Olmsted County Surveyor

Tax Statements

Taxes payable in the year 1996 on the land herein described have been paid, there are no delinquent taxes and transfer has been entered this 14 day of Feb, 1996.

Bob Ryan  
Olmsted County Auditor/Treasurer  
By Laura P. Parkey Deputy

City Approval

State of Minnesota  
County of Olmsted  
City of Chatfield

We M.L. Dudek, Mayor, and Joel Young, City Clerk, in and for the City of Chatfield, do hereby certify that on the 14 day of February, 1996, the accompanying plat was duly approved by the Common Council of the City of Chatfield. In testimony thereof I have hereunto signed my name and affixed the seal of said City of Chatfield this 14 day of February, 1996.

M.L. Dudek  
Mayor, M.L. Dudek

Joel Young  
City Clerk, Joel Young

County Recorder 745642  
DOCUMENT NUMBER

I hereby certify that this instrument was filed in the Office of the County Recorder for record on this 18 day of Feb, 1996 at 8 o'clock A.M., and was duly recorded in the Olmsted County records.

Daniel J. Hall  
County Recorder

Catherine Egan  
Deputy

Instrument of Dedication

KNOW ALL MEN BY THESE PRESENTS: That TerMar Development Inc., a Minnesota Corporation, owner and proprietor of the following described property in the City of Chatfield, State of Minnesota, to wit:

All of Outlot A of TERMAR THIRD ADDITION on file and on record in the Olmsted County Recorder's Office. Containing 36.70 acres.

Have caused the same to be surveyed and replatted as TERMAR FOURTH ADDITION and do hereby donate and dedicate to the public for the public use forever the thoroughfare also dedicate the easements as shown on this plat for drainage, utility, and emergency vehicle access purposes only.

In witness whereof said TerMar Development Inc., a Minnesota Corporation, has caused these presents to be signed by its proper officers this 30 day of Dec, 1996.

Daniel J. Tuohy CFO  
Daniel J. Tuohy, Chief Financial Officer

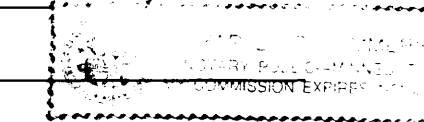
Bryan K. Peterson C.E.O.  
Bryan K. Peterson, Chief Executive Officer

State of Minnesota  
County of

The foregoing instrument was acknowledged before me this 30 day of Dec, 1996, by Daniel J. Tuohy, Chief Financial Officer, and Bryan K. Peterson, Chief Executive Officer, officers of TerMar Development Inc., on behalf of the Corporation.

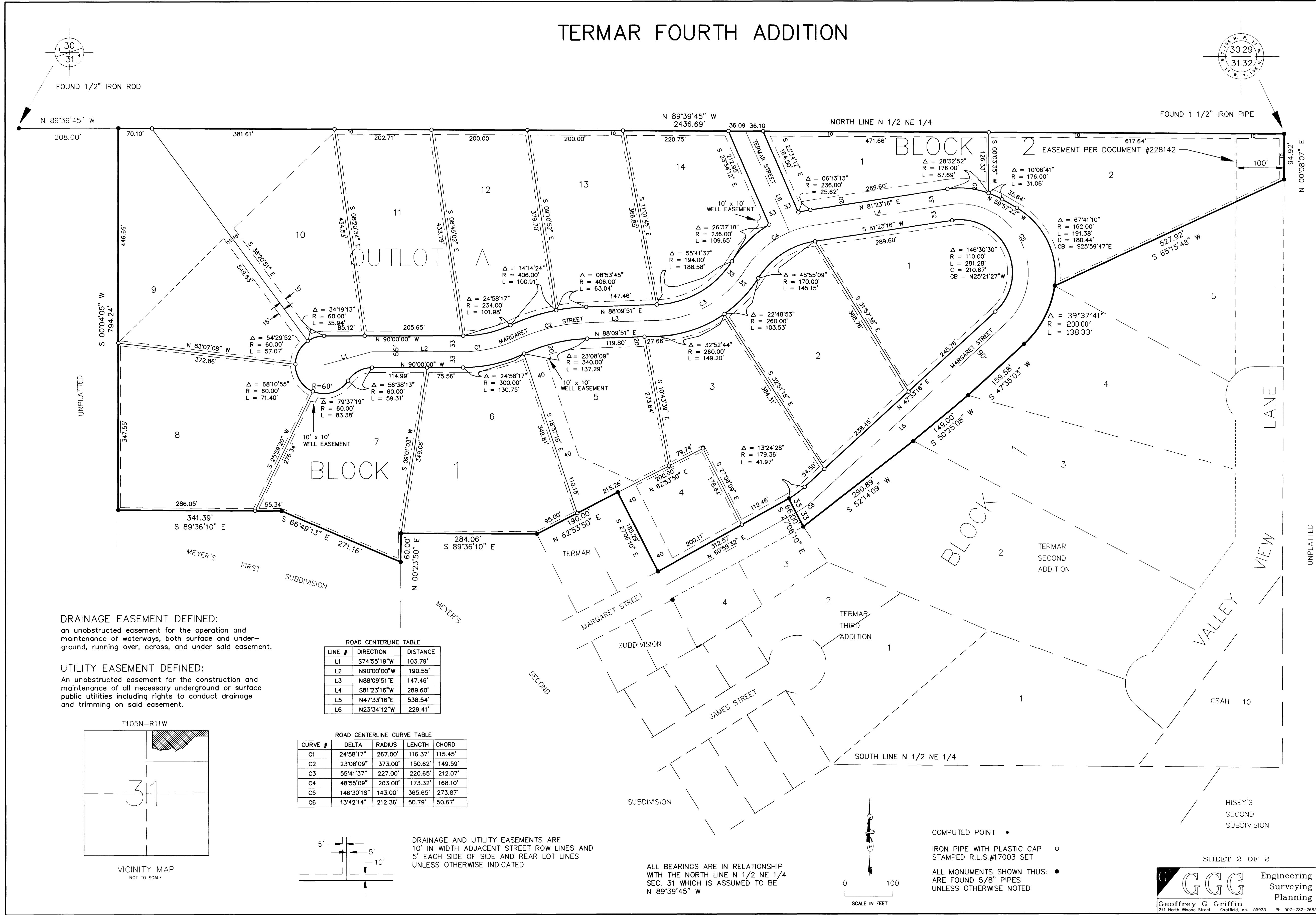
Charles B. Lammers  
Notary Public, Olmsted County, Minnesota

My commission expires:



OFFICIAL PLAT

TERMAR FOURTH ADDITION



**DRAINAGE EASEMENT DEFINED:**  
 an unobstructed easement for the operation and maintenance of waterways, both surface and underground, running over, across, and under said easement.

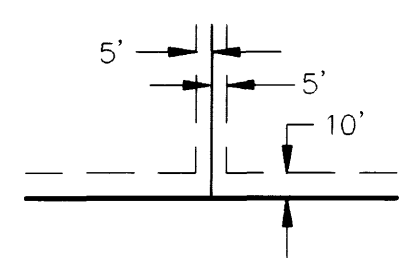
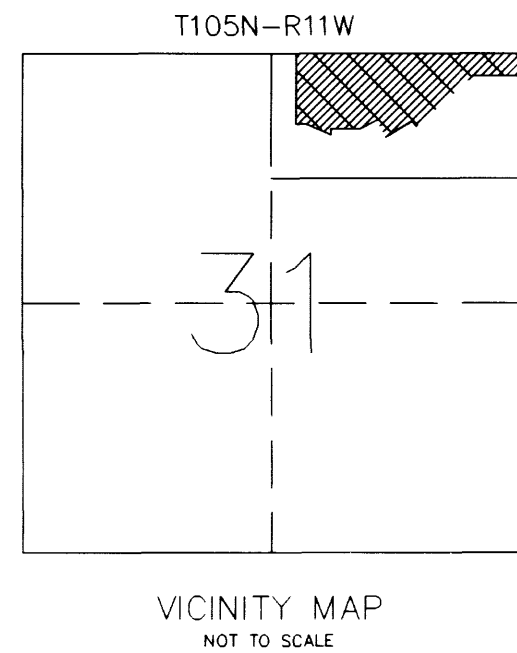
**UTILITY EASEMENT DEFINED:**  
 An unobstructed easement for the construction and maintenance of all necessary underground or surface public utilities including rights to conduct drainage and trimming on said easement.

ROAD CENTERLINE TABLE

LINE #	DIRECTION	DISTANCE
L1	S74°55'19"W	103.79'
L2	N90°00'00"W	190.55'
L3	N88°09'51"E	147.46'
L4	S81°23'16"W	289.60'
L5	N47°33'16"E	538.54'
L6	N23°34'12"W	229.41'

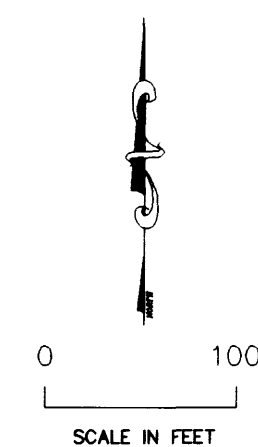
ROAD CENTERLINE CURVE TABLE

CURVE #	DELTA	RADIUS	LENGTH	CHORD
C1	24°58'17"	267.00'	116.37'	115.45'
C2	23°08'09"	373.00'	150.62'	149.59'
C3	55°41'37"	227.00'	220.65'	212.07'
C4	48°55'09"	203.00'	173.32'	168.10'
C5	146°30'18"	143.00'	365.65'	273.87'
C6	13°42'14"	212.36'	50.79'	50.67'



DRAINAGE AND UTILITY EASEMENTS ARE 10' IN WIDTH ADJACENT STREET ROW LINES AND 5' EACH SIDE OF SIDE AND REAR LOT LINES UNLESS OTHERWISE INDICATED

ALL BEARINGS ARE IN RELATIONSHIP WITH THE NORTH LINE N 1/2 NE 1/4 SEC. 31 WHICH IS ASSUMED TO BE N 89°39'45" W



COMPUTED POINT •  
 IRON PIPE WITH PLASTIC CAP ○  
 STAMPED R.L.S.#17003 SET  
 ALL MONUMENTS SHOWN THUS: ●  
 ARE FOUND 5/8" PIPES UNLESS OTHERWISE NOTED