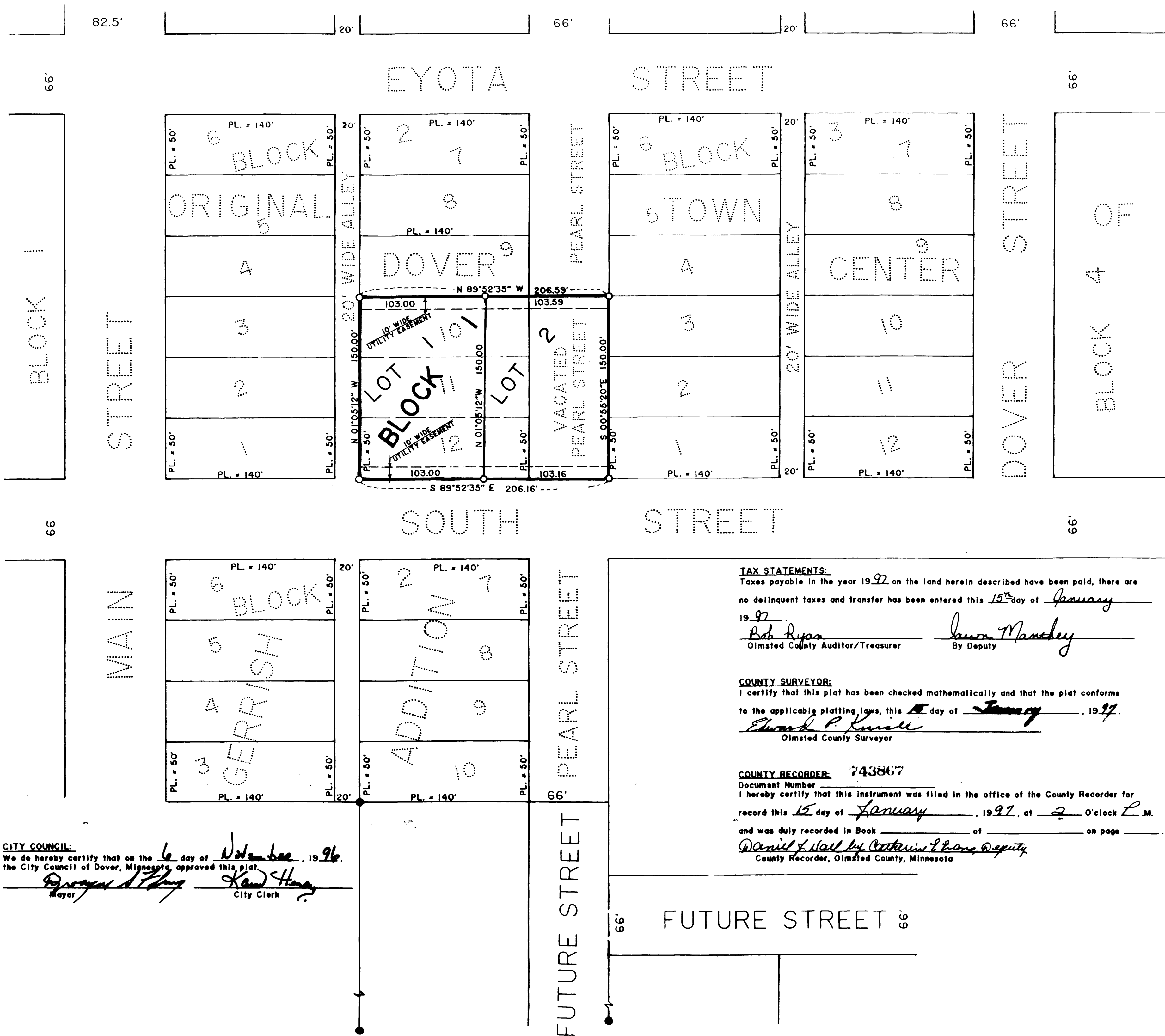
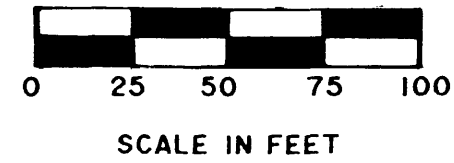


OFFICIAL PLAT

JAY B ADDITION



**BASIS OF BEARINGS:**  
All bearings are in relationship with the south line of Block 3, Original Town of Dover Center, which is assumed to be S 89°52'35" E.



**LEGEND:**  
● = FOUND 5/8" PIPE UNLESS NOTED OTHERWISE  
○ = SET 5/8" PIPE UNLESS NOTED OTHERWISE  
MEAS. = MEASURED  
PL. = PLATTED

**INSTRUMENT OF DEDICATION:**  
KNOW ALL MEN BY THESE PRESENTS: That J. Lincoln Henry and Geraldine L. Henry, husband and wife, owners and proprietors of the following described property situated in the City of Dover, County of Olmsted, State of Minnesota, to wit:

Lots 10, 11, and 12 in Block 2 and that portion of the vacated Pearl Street adjoining said Lots 10, 11, and 12, all in the Original Town of Dover Center. Containing 0.71 Acres, more or less. Have caused the same to be surveyed and platted as JAY B ADDITION, and do hereby donate and dedicate the easements as shown on this plat for drainage and utility purposes only.

**TAX STATEMENTS:**  
Taxes payable in the year 1997 on the land herein described have been paid, there are no delinquent taxes and transfer has been entered this 15<sup>th</sup> day of January 1997.

Bob Ryan, Olmsted County Auditor/Treasurer  
Laura Mansley, By Deputy

**COUNTY SURVEYOR:**  
I certify that this plat has been checked mathematically and that the plat conforms to the applicable platting laws, this 15<sup>th</sup> day of January, 1997.

Edward P. Knittel, Olmsted County Surveyor

**COUNTY RECORDER:** 743867  
Document Number  
I hereby certify that this instrument was filed in the office of the County Recorder for record this 15<sup>th</sup> day of January, 1997, at 2 O'clock P.M.

and was duly recorded in Book \_\_\_\_\_ of \_\_\_\_\_ on page \_\_\_\_\_.  
Daniel J. Hall, by Catherine J. Pans, Deputy, County Recorder, Olmsted County, Minnesota

In witness whereof said J. Lincoln Henry and Geraldine L. Henry have hereunto set our hands this 6<sup>th</sup> day of November, 1996.  
J. Lincoln Henry, Geraldine L. Henry

State of Minnesota, County of Olmsted.  
The foregoing instrument was acknowledged before me this 6<sup>th</sup> day of November, 1996, by J. Lincoln Henry and Geraldine L. Henry.  
Susan M. Vermilya, Notary Public.

**SURVEYOR'S CERTIFICATE**  
I hereby certify that I have surveyed and platted the property described on this plat as JAY B ADDITION; that this plat is a correct representation of the survey; that all distances are correctly shown on the plat in feet and hundredths of a foot; that all monuments have been correctly placed in the ground as shown; that the outside boundary lines are correctly designated on the plat; and that there are no wet lands as defined in MS 505.02, Subd. 1, or public highways to be designated other than as shown.

Roger W. Brand, Land Surveyor, Minnesota License No. 8952

State of Minnesota, County of Winona.  
Susan M. Vermilya, Notary Public, My Commission Expires 1-20-00

The surveyor's certificate was subscribed and sworn to before me this 6<sup>th</sup> day of November, 1996.  
Susan M. Vermilya, Notary Public, County, Minnesota.  
My Commission expires January 31, 2000.

**CITY COUNCIL:**  
We do hereby certify that on the 6<sup>th</sup> day of November, 1996, the City Council of Dover, Minnesota, approved this plat.  
Mayor, City Clerk

**UTILITY EASEMENT DEFINED:** An unobstructed easement for the construction and maintenance of all necessary overhead, underground, or surface public utilities including the rights to conduct drainage and trimming on said easement.

PREPARED BY:  
ROGER W. BRAND & ASSOCIATES  
ST. CHARLES, MINNESOTA 55972