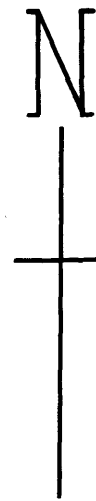


# MINER'S HEIGHTS BLOCK 4

ROCHESTER MINNESOTA.  
SCALE 1" = 60'.

*John J. Kerr* COUNTY SURVEYOR.  
REGISTERED LAND SURVEYOR NO. 238.  
1951



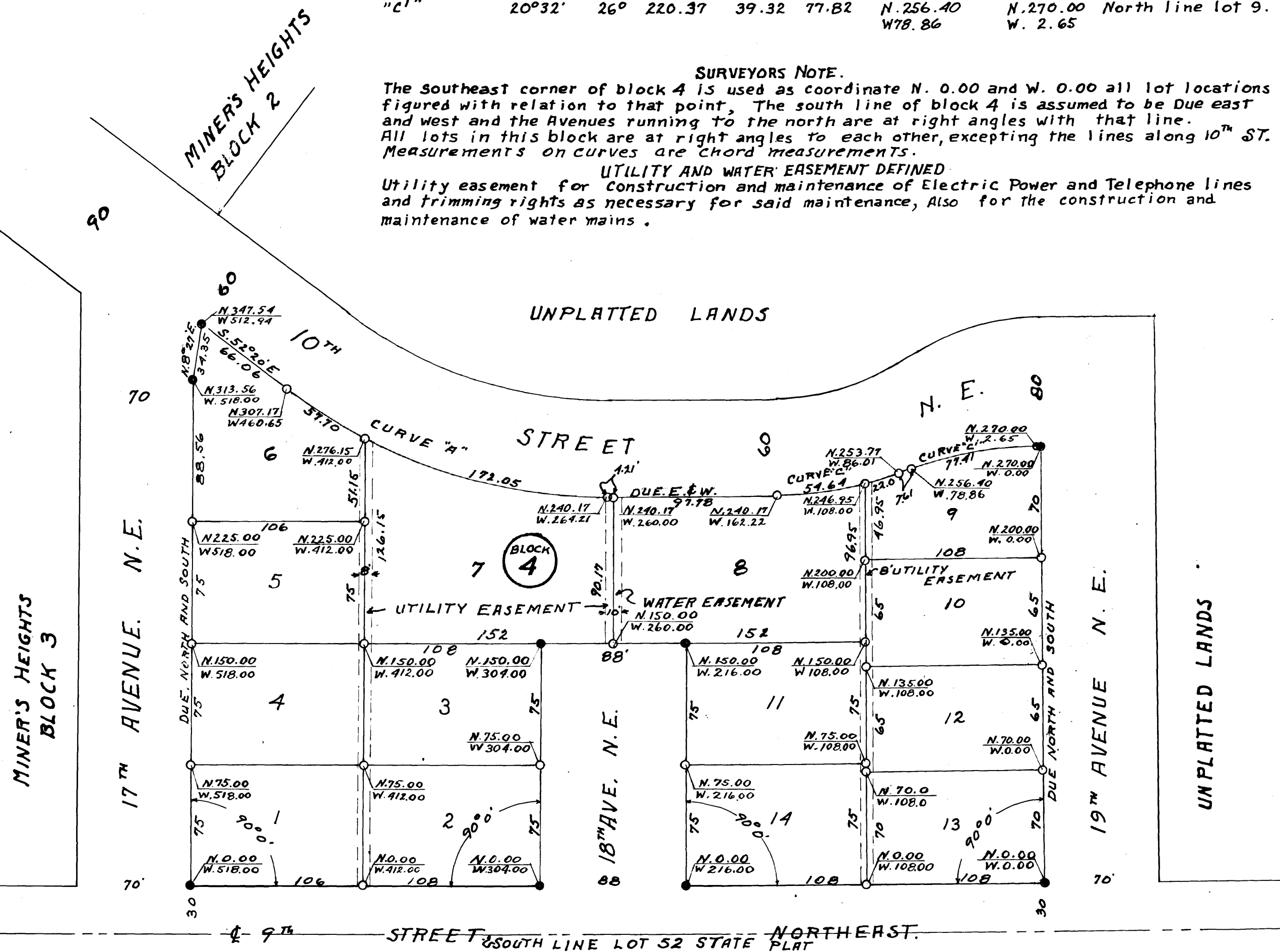
CURVE DESIGNATION	DELTA ANGLE	DEGREE	RADIUS	TANGENT LENGTH	CHORD LENGTH	COORDINATE P.C.	COORDINATE P.T.	REMARKS.
"A"	37°40'	20°	286.48'	97.71	188.33	N. 334.78 W. 439.27	N. 275.17 W. 264.21	25 feet south of north line of street.
"C"	20°32'	26°	220.37	39.32	77.82	N. 240.17 W. 162.22	N. 253.77 W. 86.01	North line of lots 8 and 9.
"C1"	20°32'	26°	220.37	39.32	77.82	N. 256.40 W. 78.86	N. 270.00 W. 2.65	North line lot 9.

### SURVEYORS NOTE.

The southeast corner of block 4 is used as coordinate N. 0.00 and W. 0.00 all lot locations figured with relation to that point. The south line of block 4 is assumed to be Due east and west and the Avenues running to the north are at right angles with that line. All lots in this block are at right angles to each other, excepting the lines along 10<sup>th</sup> ST. Measurements on curves are chord measurements.

### UTILITY AND WATER EASEMENT DEFINED.

Utility easement for construction and maintenance of Electric Power and Telephone lines and trimming rights as necessary for said maintenance, Also for the construction and maintenance of water mains.



### SURVEYORS CERTIFICATE.

I, John J. Kerr, County Surveyor do hereby certify that at the request of Ethel M. Miner (widow), John F. Miner, and Eleanor D. Miner (his wife), Owners of that part of lot 52 State Plat of Section 36 Township 107 North of range 14 west, in Olmsted County, Minnesota, as shown by the plat of record as "Block four Miner's Heights", I have surveyed, Staked and platted said lands into lots and an Avenue such subdivision to be known and designated as "MINER'S HEIGHTS BLOCK FOUR", I further certify that the accompanying plat is a true and correct representation of said survey as made, That distances are shown on said plat in feet and decimals, that monuments for the guidance of future surveys have been placed in the ground at the places marked thus \* , That there are no wet lands thereon, That said tract has not been here-to-fore subdivided.

*John J. Kerr* County Surveyor.  
Registered Land Surveyor No. 238.

State of Minnesota,  
County of Olmsted, S. S.  
We, The undersigned, Ethel M. Miner (widow), John F. Miner and Eleanor D. Miner (his wife), Do hereby Certify that we are the owners of the tract of land described in the foregoing surveyors Certificate, That we have caused the same to be surveyed and platted into lots, an Avenue and Utility easements, To be known and designated as "MINER'S HEIGHTS BLOCK FOUR", and that we do for Our Heirs, Executors, Administrators, and Assigns grant and dedicate the avenue as laid down on the accompanying plat to the public use as such forever, And that the easements for public Utilities as shown are hereby granted for such purpose, in testimony whereof we have here-un-to set our hands and seals On this 23<sup>rd</sup> Day of July... A.D. 1951, In the presence of.

*Caralite Tingley* Witness. *Ethel M. Miner*.....  
*J. L. Burrows* Witness. *John F. Miner*.....  
*A. J. Gardner* Witness. *Eleanor D. Miner*.....

State of Minnesota,  
County of Olmsted, S.S.  
On this 23<sup>rd</sup> Day of July A.D. 1951 before me a Notary Public within and for said County and State, Personally appeared Ethel M. Miner (widow) John F. Miner and Eleanor D. Miner (his wife), To me known to be the persons described in and who executed the foregoing instrument, and acknowledged that they executed the same as their free act and deed.  
*Anna M. Drews* Notary Public, Olmsted County, Minnesota.  
My Commission expires June 15, 1952

State of Minnesota,  
County of Olmsted,  
City of Rochester, S.S.  
I, F. R. Finch City Clerk in and for said City of Rochester, do hereby certify that on this 23<sup>rd</sup> Day of July... A.D. 1951 the accompanying plat was duly approved by the Common Council of the City of Rochester, In testimony whereof I have here-un-to set my hand and affixed the seal of said City this 24<sup>th</sup> day of July... A.D. 1951.  
*F. R. Finch* City Clerk.

Taxes paid for the year 1951.  
..... County Treasurer.  
Taxes paid and transfer entered this 27<sup>th</sup> Day of July... A.D. 1951  
*Francis S. ...* County Auditor.

State of Minnesota, Document No 1119  
County of Olmsted, S. S.  
I, Tom Moore, Register of Deeds in and for said County do hereby certify that the foregoing plat and instrument were filed in this office on this 24<sup>th</sup> day of August A.D. 1951 at 7:00 Clock P.M. and were duly filed in book of plats ..... page .....  
*Tom Moore* Register of Deeds.  
by *Donald S. ...* deputy