

AUSTINS REPLAT

PART OF OUTLOTS 42 AND 66 WILLIAMS' HEALY'S & CORNFORTH'S ADDITION

ROCHESTER, MINNESOTA

SURVEYORS CERTIFICATE

I, C.A. ARMSTRONG, REGISTERED LAND SURVEYOR DO HEREBY CERTIFY THAT AT THE REQUEST OF L.T. AUSTIN, I HAVE SURVEYED AND PLATTED INTO LOTS AS SHOWN ON THE ACCOMPANYING PLAT ON WHICH THIS CERTIFICATE IS WRITTEN AND WHICH SHALL BE KNOWN AND DESIGNATED AS AUSTINS REPLAT THE FOLLOWING DESCRIBED TRACT LYING IN OUTLOTS 42 AND 66 OF WILLIAMS' HEALY'S AND CORNFORTH'S ADDITION IN THE CITY OF ROCHESTER, MINNESOTA TO WIT:

COMMENCING AT THE NORTHWEST CORNER OF LOT 23 IN REPLAT OF BLOCKS 3 AND 8, WILLIAMS' HEALY'S AND CORNFORTH'S ADDITION, THENCE SOUTH ALONG THE EAST LINES OF OUTLOTS 44, 43, AND 42 IN WILLIAMS' HEALY'S AND CORNFORTH'S ADDITION FOR A DISTANCE OF 341.44 FEET FOR A PLACE OF BEGINNING, THENCE NORTH 89°-54'-30" WEST FOR A DISTANCE OF 285.0 FEET, THENCE SOUTH 9°-29'-30" EAST FOR A DISTANCE OF 159.6 FEET TO THE SOUTH BOUNDARY OF OUTLOT 66, THENCE SOUTH 89°-56'-30" EAST ALONG THE SOUTH BOUNDARIES OF OUTLOTS 66 AND 42 FOR A DISTANCE OF 259.1 FEET TO THE SOUTHEAST CORNER OF OUTLOT 42, THENCE NORTH ALONG THE EAST BOUNDARY OF OUTLOT 42 FOR A DISTANCE OF 156.9 FEET TO THE PLACE OF BEGINNING.

I FURTHER CERTIFY THAT THE ACCOMPANYING PLAT IS A TRUE AND CORRECT RECORD AND REPRESENTATION OF THE SURVEY, THAT ALL DISTANCES ARE CORRECTLY SHOWN IN FEET AND DECIMALS OF FEET, THAT MONUMENTS FOR GUIDANCE OF FUTURE SURVEYS HAVE BEEN CORRECTLY PLACED IN THE GROUND AS DESIGNATED ON THE PLAT, THAT THE OUTSIDE BOUNDARIES ARE CORRECTLY SHOWN, THAT THERE ARE NO WET LANDS TO BE DESIGNATED THEREON, AND THAT THE LAND HAS BEEN HERETO PLATTED AS OUTLOTS 42 AND 66 IN WILLIAMS' HEALY'S AND CORNFORTH'S ADDITION BUT HAS NOT BEEN SUBDIVIDED INTO LOTS.

MESGHE & ARMSTRONG PROFESSIONAL ENGINEERS

DATED THIS 15TH DAY OF JUNE 1950.

C.A. Armstrong
C.A. ARMSTRONG
REGISTERED LAND SURVEYOR - NUMBER 1713

SUBSCRIBED AND SWORN TO BEFORE ME A NOTARY PUBLIC, THIS 15TH DAY OF JUNE 1950 A.D.
MY COMMISSION EXPIRES April 7 1957

Evelyn Ashcroft
NOTARY PUBLIC, OLMPSTED COUNTY, MINNESOTA

DEDICATION

WE, THE UNDERSIGNED, LOUIE T. AUSTIN AND WIFE, DAISY C. AUSTIN; DO HEREBY CERTIFY THAT THEY ARE THE OWNERS OF THE LAND DESCRIBED IN THE FOREGOING SURVEYORS CERTIFICATE AND DESIGNATED ON THE ACCOMPANYING PLAT; THAT THEY HAVE CAUSED THE SAME TO BE SURVEYED AND PLATTED INTO LOTS AS A REPLAT OF THE OUTLOTS THEREIN DESCRIBED, AND WE DEDICATE TO THE MUNICIPALITY THE UTILITY EASEMENTS SHOWN THEREON.
DATED JUNE 14 1950.

IN THE PRESENCE OF

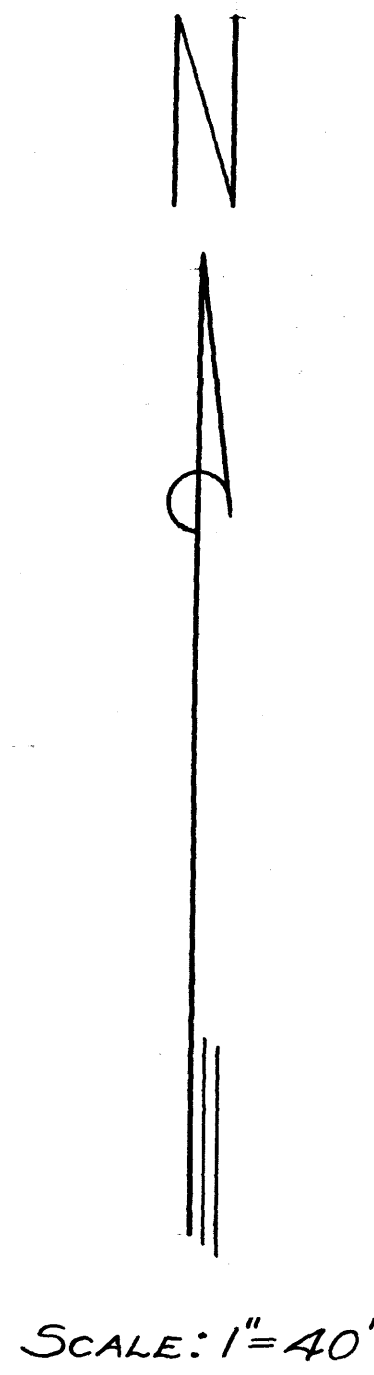
Louie T. Austin
Daisy C. Austin
C.A. Armstrong
E.E. Mesghe

ACKNOWLEDGMENT

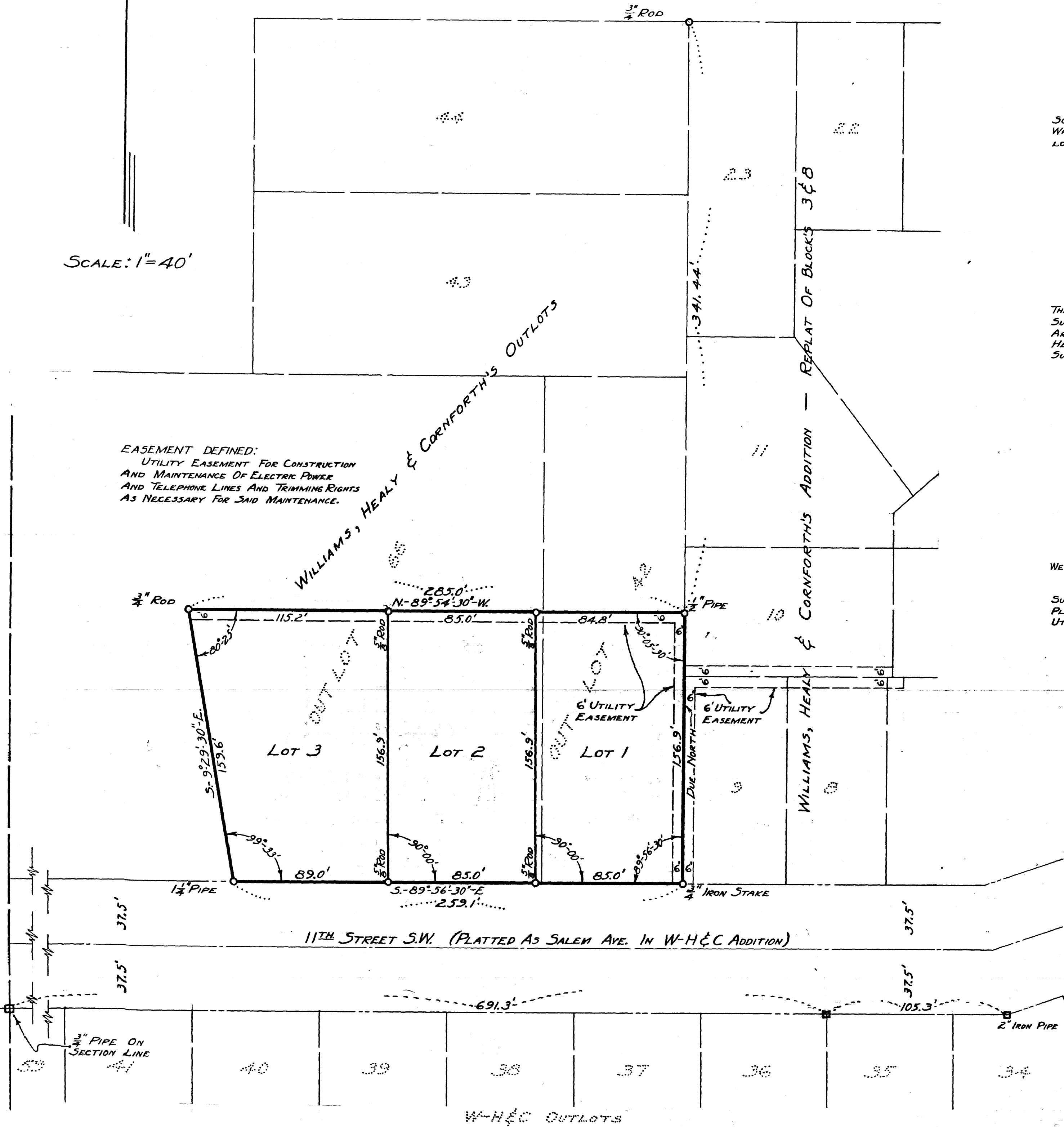
STATE OF MINNESOTA } ss.
COUNTY OF OLMPSTED } ss.
ON THIS 15TH DAY OF JUNE 1950 BEFORE ME A NOTARY PUBLIC IN AND FOR SAID COUNTY, PERSONALLY APPEARED LOUIE T. AUSTIN AND DAISY C. AUSTIN, HIS WIFE; TO ME KNOWN TO BE THE PERSONS DESCRIBED IN AND WHO EXECUTED THE FOREGOING INSTRUMENT AND ACKNOWLEDGED THAT THEY EXECUTED THE SAME AS THEIR FREE ACT AND DEED.
MY COMMISSION EXPIRES July 11 1951
Glo Utz
NOTARY PUBLIC, OLMPSTED COUNTY, MINNESOTA

STATE OF MINNESOTA } ss.
COUNTY OF OLMPSTED } ss.
CITY OF ROCHESTER } ss.
I, F.R. FINCH, CITY CLERK IN AND FOR SAID CITY OF ROCHESTER DO HEREBY CERTIFY THAT ON THE 19TH DAY OF JUNE 1950 A.D. THE ACCOMPANYING AND ANNEXED PLAT WAS DULY APPROVED BY THE COMMON COUNCIL OF THE CITY OF ROCHESTER. IN TESTIMONY WHEREOF I HAVE HEREUNTO SIGNED MY NAME AND AFFIXED THE SEAL OF SAID CITY OF ROCHESTER THIS 20TH DAY OF JUNE 1950 A.D.
F.R. Finch
CITY CLERK
1950 A.D.
TAXES PAID AND TRANSFER ENTERED THIS 26TH DAY OF JUNE
TAXES FOR THE YEAR 1949 ON THE LANDS DESCRIBED ARE PAID.
Frances J. Underhill
COUNTY AUDITOR
A. C. Kline
COUNTY TREASURER

STATE OF MINNESOTA } ss.
COUNTY OF OLMPSTED } ss.
FILED FOR RECORD THIS 27TH DAY OF JUNE 1950 A.D. AT 8 O'CLOCK
M. F. Little
REGISTER OF DEEDS
T. R. Moole



SCALE: 1" = 40'



EASEMENT DEFINED:
UTILITY EASEMENT FOR CONSTRUCTION AND MAINTENANCE OF ELECTRIC POWER AND TELEPHONE LINES AND TRIMMING RIGHTS AS NECESSARY FOR SAID MAINTENANCE.

WILLIAMS, HEALY & CORNFORTH'S OUTLOTS

LOT 3

LOT 2

LOT 1

11TH STREET S.W. (PLATTED AS SALEM AVE. IN W-H&C ADDITION)

W-H&C OUTLOTS