

BIELENBERG AND GIESE FOURTH ADDITION TO ROCHESTER, MINNESOTA.

BOUNDARIES SHOWN THUS
 MONUMENTS SHOWN THUS ● = 1 1/4 PIPE.
 SCALE 1" = 100'.
 1957.

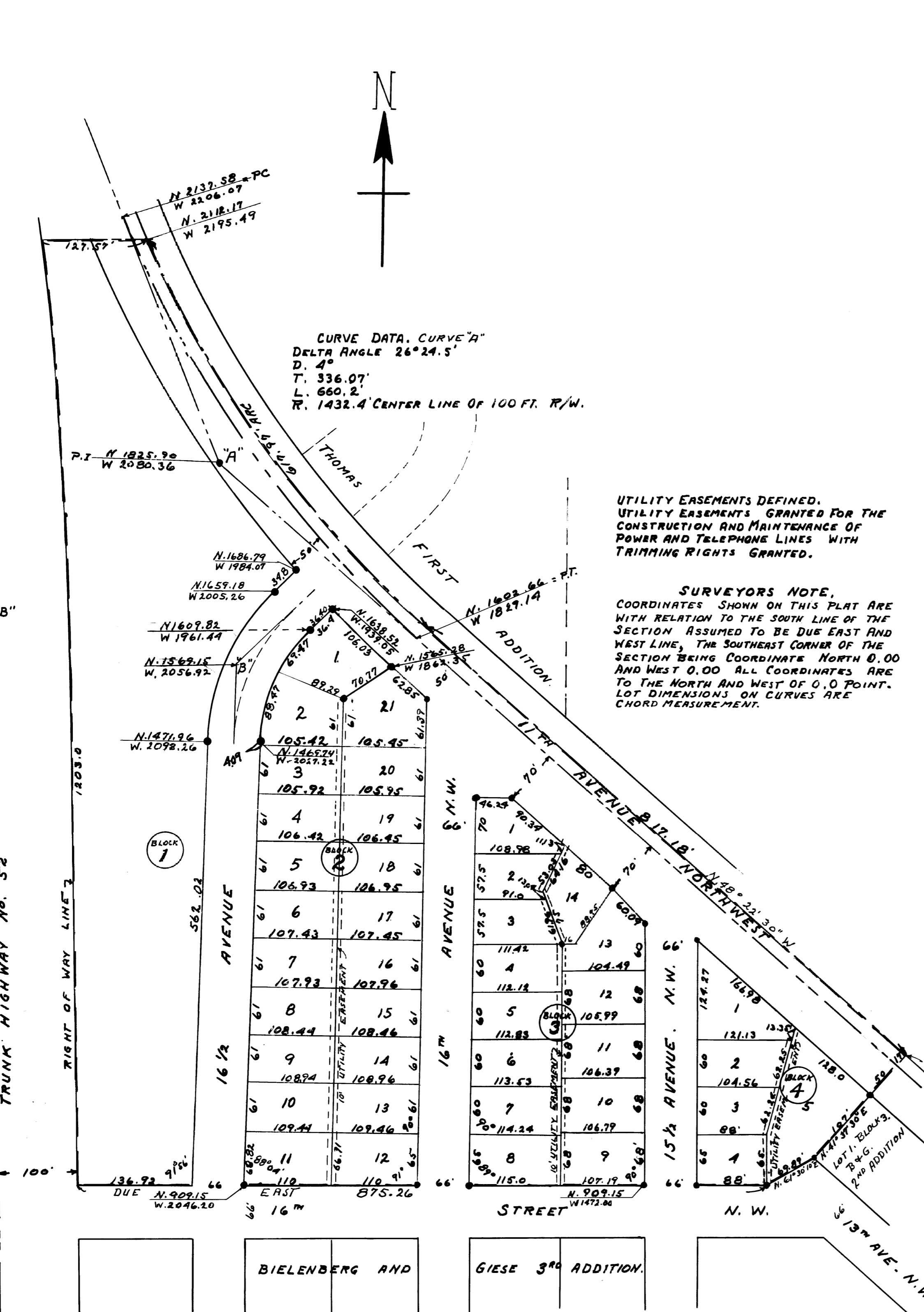


CURVE DATA CURVE "B"
 A. 46° 28'
 D. 25°
 R. 229.18 C.L.
 T. 98.38'
 L.C. 185.87'

CURVE DATA, CURVE "A"
 DELTA ANGLE 26° 24.5'
 D. 4°
 T. 336.07'
 L. 660.2'
 R. 1432.4' CENTER LINE OF 100 FT. R/W.

UTILITY EASEMENTS DEFINED.
 UTILITY EASEMENTS GRANTED FOR THE
 CONSTRUCTION AND MAINTENANCE OF
 POWER AND TELEPHONE LINES WITH
 TRIMMING RIGHTS GRANTED.

SURVEYORS NOTE.
 COORDINATES SHOWN ON THIS PLAT ARE
 WITH RELATION TO THE SOUTH LINE OF THE
 SECTION ASSUMED TO BE DUE EAST AND
 WEST LINE, THE SOUTHEAST CORNER OF THE
 SECTION BEING COORDINATE NORTH 0.00
 AND WEST 0.00 ALL COORDINATES ARE
 TO THE NORTH AND WEST OF 0.0 POINT.
 LOT DIMENSIONS ON CURVES ARE
 CHORD MEASUREMENT.



SURVEYORS CERTIFICATE.

STATE OF MINNESOTA,
 COUNTY OF OLMTED, S. S.
 I, JOHN J. KERR, COUNTY SURVEYOR IN AND FOR SAID COUNTY DO HEREBY CERTIFY THAT AT THE REQUEST OF WILLIAM BIELENBERG AND RUTH E. BIELENBERG (HIS WIFE), JOHN BIELENBERG (SINGLE), HENRY J. GIESE AND MYRTLE A. GIESE (HIS WIFE) AND A. J. HALL AND LILLIAN E. HALL (HIS WIFE), OWNERS OF THE FOLLOWING DESCRIBED LANDS: ASSUMING THE SOUTH LINE OF SECTION 27 TOWNSHIP 107 NORTH OF RANGE 14 WEST TO BE A DUE EAST AND WEST LINE AND COMMENCING FOR A PLACE OF BEGINNING AT A POINT IN THE CENTER OF THE OLD ST. PAUL ROAD WHICH IS NORTH 48° 22' 30" WEST A DISTANCE OF 1614.88 FEET FROM THE SOUTHEAST CORNER OF SAID SECTION, RUNNING THENCE NORTH 48° 22' 30" WEST ALONG THE CENTER OF SAID ROAD A DISTANCE OF 817.18 FEET, THENCE DEFLECT TO THE RIGHT ON A CURVE, RADIUS 1415.4 FEET A DISTANCE OF 617.97 FEET TO A POINT WHICH IS 531.3 FEET SOUTH OF THE NORTH LINE OF THE SOUTHEAST 1/4 OF SAID SECTION, THENCE WEST A DISTANCE OF 127.57 FEET TO THE EAST RIGHT OF WAY LINE OF TRUNK HIGHWAY No. 52, THENCE SOUTHERLY ALONG THE EAST RIGHT OF WAY LINE OF SAID HIGHWAY A DISTANCE OF 1203.00 FEET TO THE NORTH LINE OF 16TH STREET NORTHWEST, THENCE DUE EAST A DISTANCE OF 875.26 FEET ALONG THE NORTH LINE OF 16TH STREET NORTHWEST, THENCE NORTH 61° 30' 10" EAST A DISTANCE OF 69.89 FEET TO THE SOUTHWEST CORNER OF LOT 1 BLOCK 3 BIELENBERG AND GIESE SECOND ADDITION, THENCE NORTH 41° 37' 30" EAST A DISTANCE OF 174.00 FEET TO THE PLACE OF BEGINNING. I HAVE SURVEYED AND PLATTED SAID LANDS INTO LOTS, BLOCKS, STREETS AND AVENUES SUCH SUBDIVISION TO BE KNOWN AND DESIGNATED AS "BIELENBERG AND GIESE FOURTH ADDITION TO ROCHESTER, MINNESOTA." I FURTHER CERTIFY THAT THE ACCOMPANYING PLAT IS A CORRECT MAP OF SAID SURVEY AS MADE, THAT MEASUREMENTS ARE SHOWN IN FEET AND DECIMALS OF A FOOT, THAT MONUMENTS FOR THE GUIDANCE OF FUTURE SURVEYS HAVE BEEN PLACED IN THE GROUND AT THE LOCATIONS MARKED THUS ● AND DESCRIBED, THAT THERE ARE NO WET LANDS THEREON, THAT SAID LANDS HAVE NOT HERE-TO-FORE BEEN PLATTED OR SUBDIVIDED, THAT THE BEARING OF LINES AND ANGLES OF ENCLOSURE ARE SHOWN. DATED THIS 2ND DAY OF MAY A.D. 1957.

John J. Kerr COUNTY SURVEYOR.
 REGISTERED LAND SURVEYOR No. 238.

DEDICATION.

WE, THE UNDERSIGNED WILLIAM BIELENBERG AND RUTH E. BIELENBERG (HIS WIFE), JOHN BIELENBERG (SINGLE) HENRY J. GIESE AND MYRTLE A. GIESE (HIS WIFE), A. J. HALL AND LILLIAN E. HALL (HIS WIFE), DO HEREBY CERTIFY THAT WE ARE THE OWNERS OF THE LANDS DESCRIBED IN THE ABOVE SURVEYORS CERTIFICATE, THAT WE HAVE CAUSED THE SAME TO BE SURVEYED AND PLATTED INTO LOTS, BLOCKS, STREETS, AND AVENUES SUCH SUBDIVISION TO BE KNOWN AND DESIGNATED AS "BIELENBERG AND GIESE FOURTH ADDITION TO ROCHESTER, MINNESOTA", AS SHOWN BY THE ACCOMPANYING PLAT, AND WE DO FOR OURSELVES, OUR HEIRS, ADMINISTRATORS EXECUTORS AND ASSIGNS HEREBY GRANT AND DEDICATE THE STREETS AND AVENUES TO THE PUBLIC USE AS SUCH FOREVER, AND WE ALSO GRANT UTILITY EASEMENTS AS SHOWN ON SAID PLAT AND DEFINED THEREON.

SIGNED IN THE PRESENCE OF:
William Bielenberg (WILLIAM BIELENBERG)
Ruth E. Bielenberg (RUTH E. BIELENBERG)
John Bielenberg (JOHN BIELENBERG)
Henry J. Giese (HENRY J. GIESE)
Myrtle A. Giese (MYRTLE A. GIESE)
A. J. Hall (A. J. HALL)
Lillian E. Hall (LILLIAN E. HALL)

STATE OF MINNESOTA, S. S.
 COUNTY OF OLMTED, S. S.
 ON THIS 6TH DAY OF May A. D. 1957 BEFORE ME A NOTARY PUBLIC WITHIN AND FOR SAID COUNTY AND STATE, PERSONALLY APPEARED WILLIAM BIELENBERG AND RUTH E. BIELENBERG, JOHN BIELENBERG, HENRY J. GIESE, MYRTLE A. GIESE, A. J. HALL AND LILLIAN E. HALL TO ME KNOWN TO BE THE PERSONS WHO EXECUTED THE FOREGOING INSTRUMENT AND ACKNOWLEDGED THAT THEY EXECUTED THE SAME AS THEIR FREE ACT AND DEED.

Wm. C. Schacht NOTARY PUBLIC, OLMTED COUNTY, MINNESOTA.
 MY COMMISSION EXPIRES March 25 1960

STATE OF MINNESOTA, S. S.
 COUNTY OF OLMTED, S. S.
 CITY OF ROCHESTER, S. S.
 I, ELFREDA REITER, CITY CLERK IN AND FOR THE CITY OF ROCHESTER DO HEREBY CERTIFY THAT ON THIS 3rd DAY OF June A. D. 1957, THE ACCOMPANYING PLAT WAS DULY APPROVED BY THE COMMON COUNCIL OF THE CITY OF ROCHESTER, IN TESTIMONY WHEREOF I HAVE SIGNED MY NAME AND AFFIXED THE SEAL OF SAID CITY THIS 5TH DAY OF June A. D. 1957.

Elfreda Reiter CITY CLERK.

TAXES PAID FOR THE YEAR OF 1954-

Karl A. Foster COUNTY TREASURER.

TAXES PAID AND TRANSFER ENTERED THIS 5th DAY OF JUNE A. D. 1957.

Francis L. Underbeak COUNTY AUDITOR.

STATE OF MINNESOTA, S. S.
 COUNTY OF OLMTED, S. S.
 AT 11 O-CLOCK AM, FILED FOR RECORD THIS 6th DAY OF June A. D. 1957
 PAGE 1

Tom Moore REGISTER OF DEEDS.