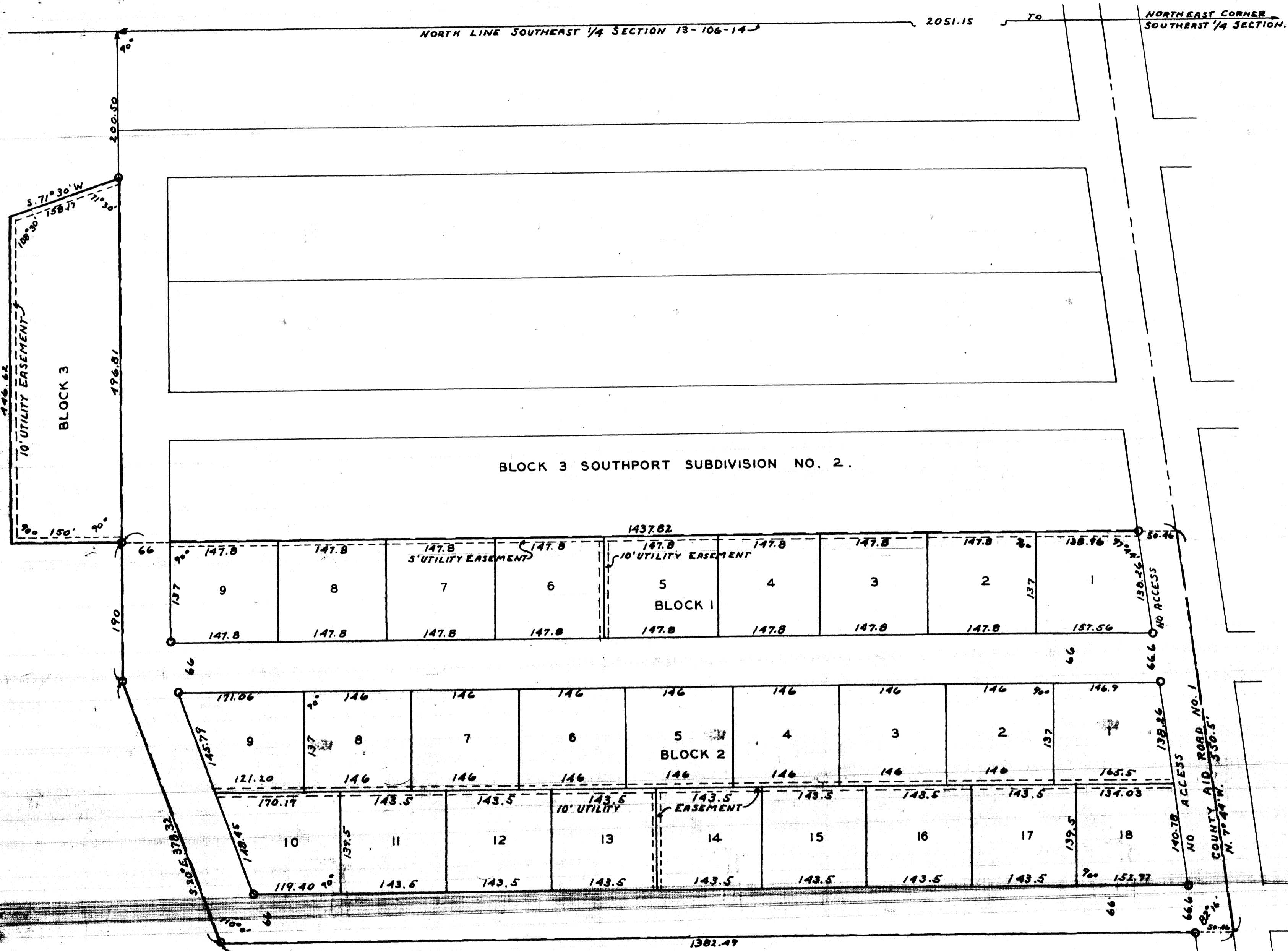


# SOUTHPORT SUBDIVISION NUMBER FOUR. OLMSTED COUNTY, MINNESOTA.

MONUMENTS SHOWN THUS O  
BOUNDARY LINES SHOWN THUS  
SCALE 1 INCH = 100 FEET.

1959.  
*John J. Kerr* COUNTY SURVEYOR  
REGISTERED LAND SURVEYOR NO. 238



SURVEYORS CERTIFICATE.

STATE OF MINNESOTA,  
COUNTY OF OLSTED, S. S.  
I, JOHN J. KERR COUNTY SURVEYOR IN AND FOR SAID COUNTY DO HEREBY CERTIFY THAT AT THE REQUEST OF SOUTHPORT INC. A MINNESOTA CORPORATION, OWNERS OF THE FOLLOWING DESCRIBED LANDS: COMMENCING AT THE NORTHEAST CORNER OF THE SOUTHWEST 1/4 OF SECTION 13, TOWNSHIP 106, NORTH OF RANGE 14 WEST AND RUNNING THENCE WEST ALONG THE NORTH LINE OF SAID SOUTHWEST 1/4 A DISTANCE OF 2051.15 FEET, THENCE SOUTH A DISTANCE OF 200.5 FEET FOR A PLACE OF BEGINNING, THENCE SOUTH 71°30' WEST A DISTANCE OF 158.17 FEET, THENCE SOUTH A DISTANCE OF 446.62 FEET, THENCE EAST A DISTANCE OF 150 FEET, THENCE SOUTH A DISTANCE OF 190 FEET, THENCE SOUTH 20° EAST A DISTANCE OF 378.32 FEET, THENCE EAST PARALLEL WITH THE NORTH LINE OF SAID SOUTHWEST 1/4 A DISTANCE OF 1382.49 FEET TO THE CENTER OF COUNTY AID ROAD NO. 1, THENCE NORTH 7°44' WEST ALONG THE CENTER OF SAID ROAD A DISTANCE OF 350.5 FEET, THENCE WEST A DISTANCE OF 1437.82 FEET, THENCE NORTH A DISTANCE OF 496.81 FEET TO THE PLACE OF BEGINNING, I HAVE SURVEYED AND PLATTED SAID LANDS INTO LOTS, BLOCKS, STREETS AND AVENUES SUCH SUBDIVISION TO BE KNOWN AND DESIGNATED AS "SOUTHPORT SUBDIVISION NUMBER FOUR". I FURTHER CERTIFY THAT THE ACCOMPANYING PLAT IS A TRUE REPRESENTATION OF SAID SURVEY AS MADE, THAT MEASUREMENTS ARE SHOWN IN FEET AND DECIMALS OF A FOOT, THAT MONUMENTS FOR THE GUIDANCE OF FUTURE SURVEYS HAVE BEEN PLACED IN THE GROUND AT THE LOCATIONS MARKED THUS O, THAT THERE ARE NO WET LANDS THEREON, THAT SAID LANDS HAVE NOT HERETOFORE BEEN PLATTED, THAT THE BOUNDARY LINES ARE SHOWN, THAT ANGLES OF ENCLOSURE ARE SHOWN AND THAT LAND TIES TO SECTION LINES AND CORNERS ARE SHOWN. DATED THIS 6<sup>th</sup> DAY OF AUGUST A.D. 1959.

*John J. Kerr* COUNTY SURVEYOR  
REGISTERED LAND SURVEYOR NO. 238.

DEDICATION.

WE, THE UNDERSIGNED SOUTHPORT INC. A MINNESOTA CORPORATION DO HEREBY CERTIFY THAT WE ARE THE OWNERS OF THE LANDS DESCRIBED IN THE FOREGOING SURVEYORS CERTIFICATE, THAT WE HAVE CAUSED THE SAME TO BE SURVEYED AND PLATTED INTO LOTS, BLOCKS, STREETS AND AVENUES AS SHOWN ON THE ACCOMPANYING PLAT SUCH SUBDIVISION TO BE KNOWN AND DESIGNATED AS SOUTHPORT SUBDIVISION NUMBER FOUR, THAT WE DO FOR OURSELVES, OUR HEIRS, ADMINISTRATORS, EXECUTORS AND ASSIGNS HEREBY GRANT AND DEDICATE THE STREETS AND AVENUES AS SHOWN ON THE ACCOMPANYING PLAT TO THE USE OF THE PUBLIC AS SUCH FOREVER. IN TESTIMONY WHEREOF WE HAVE SET OUR HANDS AND SEALS THIS 17<sup>th</sup> DAY OF AUGUST, A.D. 1959.

*Ray J. Arend* SOUTHPORT INC. BY *Ray J. Arend* PRESIDENT.  
*E. J. Armit* BY *E. J. Armit* SECRETARY.

CORPORATE ACKNOWLEDGEMENT.

STATE OF MINNESOTA,  
COUNTY OF OLSTED, S. S.  
ON THIS 17<sup>th</sup> DAY OF AUGUST A.D. 1959, BEFORE ME A NOTARY PUBLIC IN AND FOR SAID COUNTY, PERSONALLY APPEARED RAY J. AREND AND E. J. ARMIT TO ME PERSONALLY KNOWN WHO BEING EACH BY ME DULY SWORN DID SAY THAT THEY ARE RESPECTIVELY THE PRESIDENT AND SECRETARY OF THE CORPORATION NAMED IN THE FOREGOING INSTRUMENT, THAT THE SEAL AFFIXED TO SAID INSTRUMENT IS THE CORPORATE SEAL OF SAID CORPORATION, AND THAT SAID INSTRUMENT WAS SIGNED AND SEALED IN BEHALF OF SAID CORPORATION BY AUTHORITY OF ITS BOARD OF DIRECTORS AND THE SAID RAY J. AREND AND E. J. ARMIT ACKNOWLEDGED SAID INSTRUMENT TO BE THE FREE ACT AND DEED OF SAID CORPORATION.

*Ray M. Armit* NOTARY PUBLIC, OLSTED COUNTY, MINNESOTA.  
MY COMMISSION EXPIRES SEPTEMBER 13, 1961.

STATE OF MINNESOTA,  
COUNTY OF OLSTED, S. S.  
I, ROSS BRANNING COUNTY AUDITOR IN AND FOR SAID COUNTY DO HEREBY CERTIFY THAT THE ATTACHED PLAT WAS DULY APPROVED BY THE BOARD OF COUNTY COMMISSIONERS AT A MEETING HELD ON THIS 17<sup>th</sup> DAY OF AUGUST A.D. 1959, IN TESTIMONY WHEREOF I HAVE SIGNED MY NAME AND AFFIXED THE SEAL OF SAID COUNTY THIS 17<sup>th</sup> DAY OF AUGUST A.D. 1959.

*Ross Branning* COUNTY AUDITOR.

TAXES PAID FOR THE YEAR OF 1958.  
*Karl H. Post* COUNTY TREASURER.  
*Morris L. Neufuss* Deputy  
TAXES PAID AND TRANSFER ENTERED THIS 16<sup>th</sup> DAY OF SEPTEMBER A.D. 1959.

*Ross Branning* COUNTY AUDITOR.

STATE OF MINNESOTA,  
COUNTY OF OLSTED, S. S.  
FILED FOR RECORD THIS 16<sup>th</sup> DAY OF SEPTEMBER A.D. 1959 AT 4 O'CLOCK P.M.  
AND RECORDED IN BOOK OF PLATS PAGE 248672

*Harry H. Evans* REGISTER OF DEEDS.  
*Mary B. Smyth* Deputy

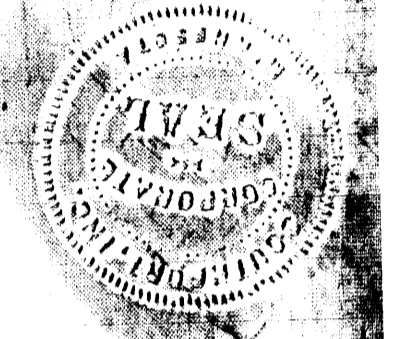
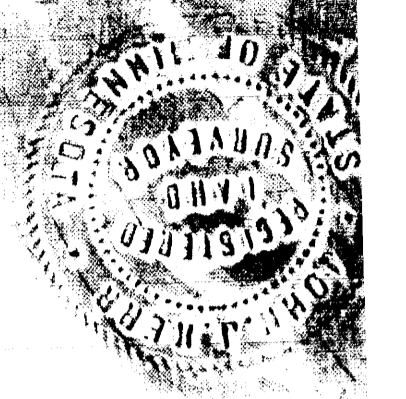
APPROVED AS TO WATER SUPPLY AND SEWAGE DISPOSAL  
THIS 20<sup>th</sup> DAY OF July 1959.  
BY *Victor C. Wilson* M.D. HEALTH OFFICER.  
ROCHESTER, OLSTED COUNTY, HEALTH UNIT.

APPROVED THIS 6<sup>th</sup> DAY OF August 1959.  
OLMSTED COUNTY PLANNING COMMISSION.  
BY *Ed. J. Rabehl* CHAIRMAN.

APPROVED THIS 6<sup>th</sup> DAY OF August 1959.  
BOARD OF SUPERVISORS, ROCHESTER TOWNSHIP.

*Robert Ferguson* CHAIRMAN.  
*Albert Mankering* SUPERVISOR.  
*Ed. J. Rabehl* SUPERVISOR.

UTILITY EASEMENT DEFINED.  
EASEMENT GRANTED FOR THE CONSTRUCTION AND MAINTENANCE OF ELECTRIC POWER AND TELEPHONE LINES WITH TRIMMING RIGHTS FOR SAID MAINTENANCE.



PROOFED  
GRANTOR  
GRANTEE  
TRACKED  
PAID  
CHG  
REG. STAMP  
MFG. TAX