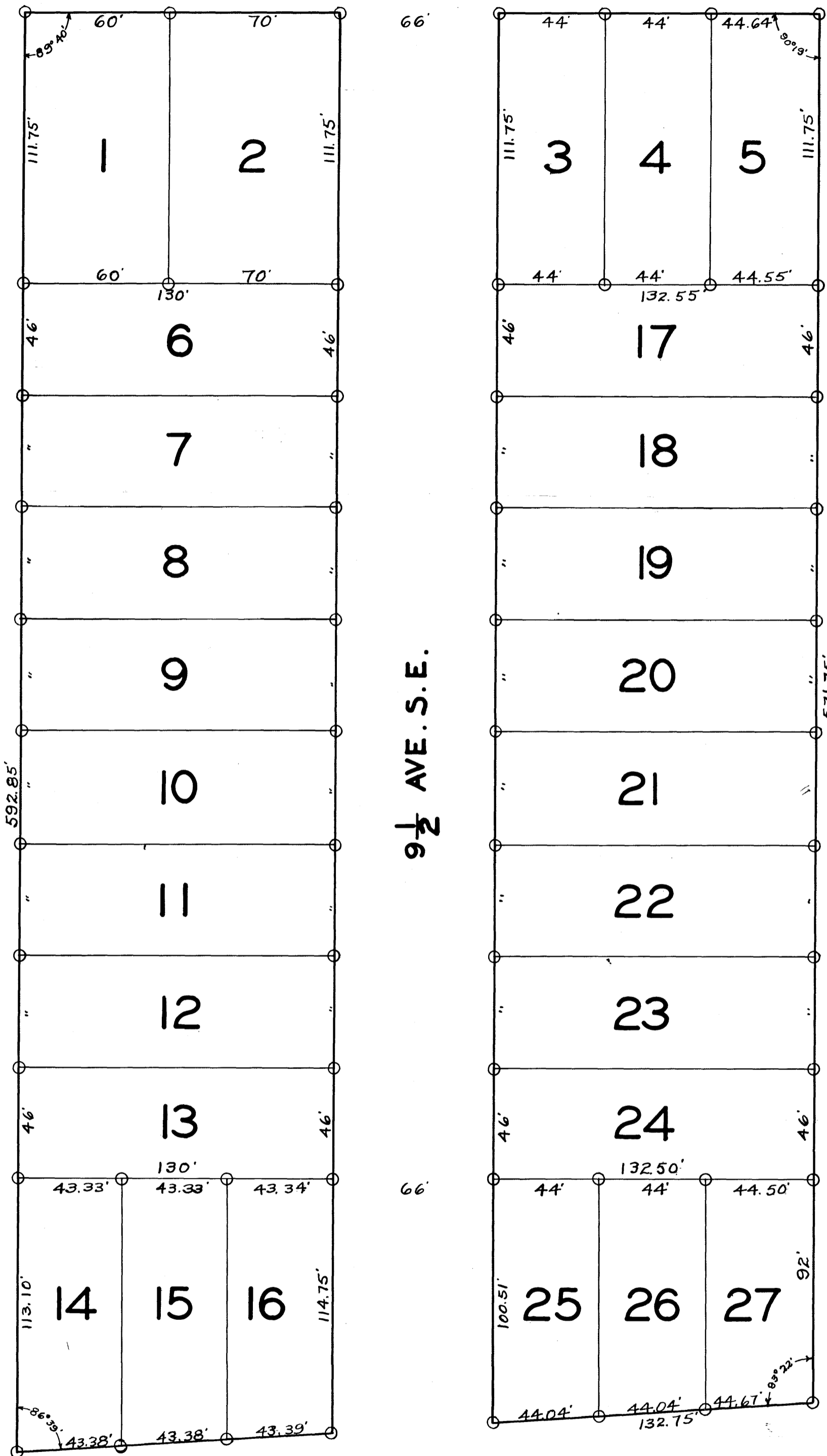


11 ST. S.E.



12 ST. S.E.

Scale ~ 1" = 40'

# RE-SUB-DIVISION OF LOT 105 - AUDITOR'S PLAT "A" ROCHESTER, MINNESOTA.

State of Minnesota,  
County of Olmsted, s.s.

I, Arleigh C. Smith, City Engineer of the City of Rochester in said County, do hereby certify that at the request of Emil Krolow, owner of all of the following, described tract of land, lying and being within the corporate limits of the City of Rochester, in the County of Olmsted and State of Minnesota, to wit;

Lot 105 of Auditor's Plat "A" in the SE 1/4 of SW 1/4 of Section One (1), Township One Hundred Six (106) North of Range Fourteen (14) West.

I have surveyed and platted said land into lots and streets as a re-sub-division of lands in the City of Rochester as shown on the accompanying plat, said re-sub-division to be known and designated as: RE-SUB-DIVISION of LOT 105-AUDITOR'S PLAT "A".

And I further certify that the said plat is a correct representation of the survey; that all distances are correctly shown on the plat as designated in feet and decimals of feet; that the monuments for guidance of future surveys have been correctly placed in the ground as shown thus O; that there are no wet lands; that the tract of land has heretofore been platted but has not been heretofore subdivided.

Dated this 10<sup>th</sup> day of October, A.D. 1938.

Arleigh C. Smith  
Minn. Reg. Professional Engr. & Land Surveyor #1381

Subscribed and sworn to before me this 10<sup>th</sup> day of October, A.D. 1938

Anna M. Drews  
Notary Public, Olmsted County, Minnesota.  
My Commission Expires June 15, 1945.

— DEDICATION —

and Anna Krolow, his wife,  
We, the undersigned, Emil Krolow, do hereby certify that said Emil Krolow is the owner of the following tract of land, situated and being within the corporate limits of the City of Rochester, in the County of Olmsted and State of Minnesota, to wit:

Lot 105 of Auditor's Plat "A" in Section One (1) of Township One Hundred Six (106) North of Range Fourteen (14) West.

We further certify that we have caused the same to be surveyed and platted into lots and streets as a re-sub-division to be known and designated as: RE-SUB-DIVISION of LOT 105-AUDITOR'S PLAT "A" and that we do for ourselves, heirs, and assigns hereby grant and dedicate the streets as laid down upon the accompanying plat to the City of Rochester and for the public use as such forever.

IN TESTIMONY WHEREOF, we have hereunto set our hands and seal this 10<sup>th</sup> day of October, A.D. 1938

Emil Krolow (Seal)  
Anna Krolow (Seal)

Signed and Sealed in presence of:

A. L. Hutchins  
F. J. Wilson

State of Minnesota,  
County of Olmsted, s.s.

On this 10<sup>th</sup> day of October, A.D. 1938, before me a Notary Public within and for said County, personally appeared Emil Krolow, and Anna Krolow, his wife, to me known to be the persons described in and who executed the foregoing instrument and acknowledged that they executed the same as their free act and deed.

Anna M. Drews  
Notary Public, Olmsted County, Minnesota.  
My Commission Expires June 15, 1945.

State of Minnesota,  
County of Olmsted, s.s.

I, Amiel L. Glabe, City Clerk in and for said City, do hereby certify that on the 10<sup>th</sup> day of October, A.D. 1938 the accompanying plat was duly approved by the Common Council of the said City of Rochester.

IN TESTIMONY WHEREOF I have hereunto signed my name and affixed the seal of said City this 11<sup>th</sup> day of October, A.D. 1938.

Amiel L. Glabe  
City Clerk.

Taxes paid and transfer made this 12<sup>th</sup> day of October, A.D. 1938

Francis J. Underhill  
County Auditor

Taxes paid for the year 1937 on the lands herein described are paid

A. E. Priese  
County Treasurer

352

State of Minnesota,  
County of Olmsted, s.s.

Filed for record this 12<sup>th</sup> day of October, A.D. 1938 at 11:40 o'clock A.M. in Book of Plats on Page

W. L. Little  
Register of Deeds.