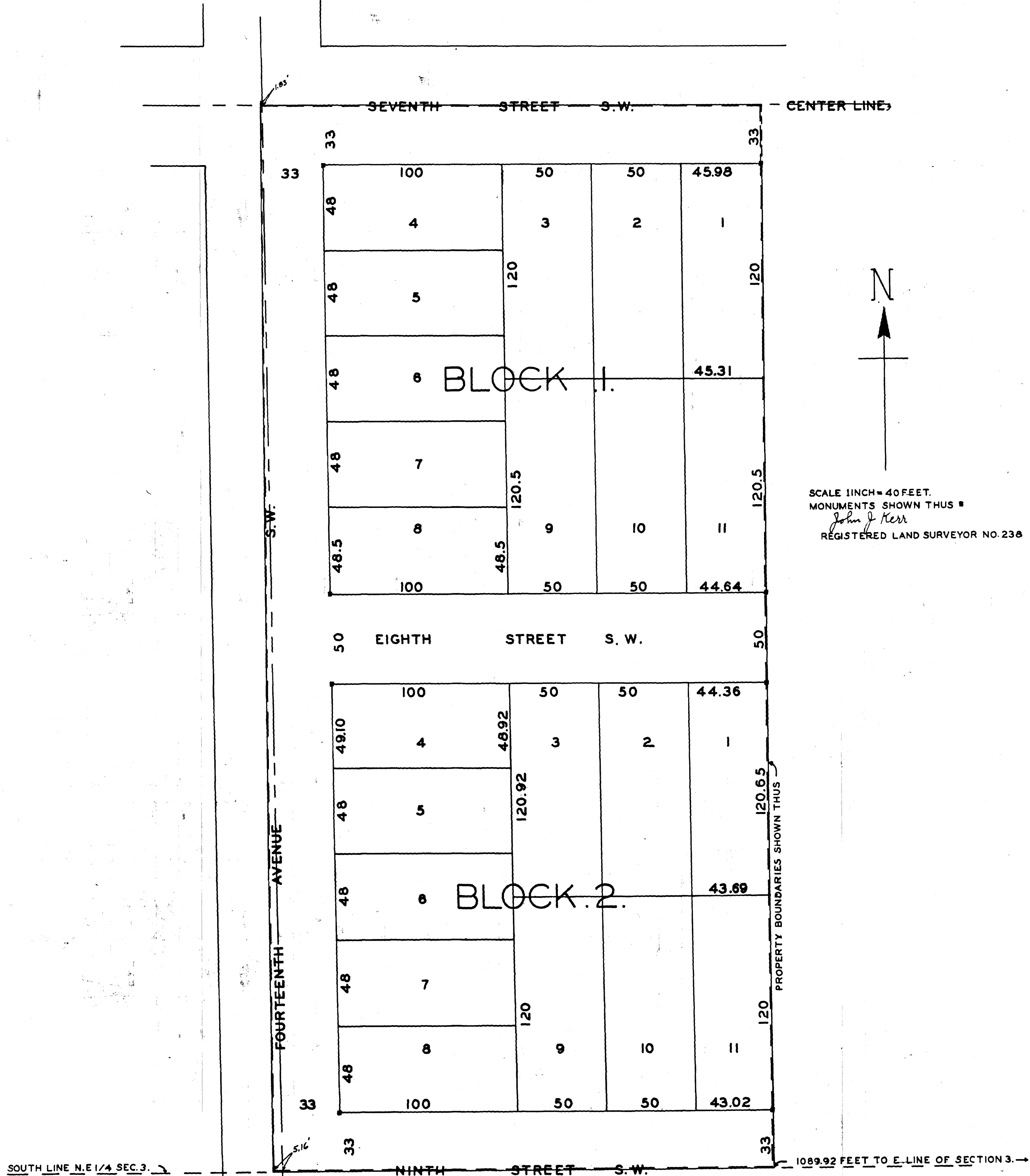


# PARKIN'S SUBDIVISION.



SCALE 1 INCH = 40 FEET.  
MONUMENTS SHOWN THUS ■  
John J. Kerr  
REGISTERED LAND SURVEYOR NO. 238

I John J. Kerr do hereby certify that at the request of the Parkin Realty Company owners of lands in Olmsted County, State of Minnesota, described as follows To-wit: Commencing at a point on the south line of the northeast quarter (1/4) of section number three (3) in Township number one hundred six (106) north of range fourteen (14) west, one thousand eighty nine and ninety two one hundredths (1089.92) feet west of the southeast corner of said northeast quarter (1/4) for a place of beginning and running thence west on the south line of said north-east quarter (1/4) two hundred eighty one (281) feet, running thence north parallel to the east line of said northeast quarter (1/4) of said section, five hundred ninety seven and six tenths (597.6) feet to the center line of Seventh Street Southwest as laid out in the City of Rochester Minnesota, running thence east along the center line of said street two hundred eighty one (281) feet, running thence south five hundred ninety seven and fifteen one hundredths (597.15) feet to the place of beginning, I have surveyed, staked, and platted the above described lands into lots, blocks and streets, that the accompanying plat is a correct representation of said survey as made, that the length of lines on said plat are shown in feet and decimals of feet, that the boundaries are correctly shown, that there are no wet lands thereon and that monuments for the guidance of future surveys have been placed in the ground wherever designated on said plat.

John J. Kerr  
Registered Land Surveyor No. 238

Sworn and subscribed to before me this 7th day of October A.D. 1938  
Samuel P. Allen  
Notary Public Olmsted County,  
My commission expires August 20, A.D. 1939.

We the undersigned Parkin Realty Company, a Minnesota Corporation, do hereby certify that we are the owners of the above described tract or parcel of land, and we further certify that we have caused the same to be surveyed and platted into lots, blocks and streets to be known and designated as "PARKIN'S SUBDIVISION" and that we do for our selves, our heirs and assigns hereby grant and dedicate the streets as laid down on the accompanying plat, and for the public use as such forever, in testimony we have hereunto set our hands and seals this 12th day of October A.D. 1938

in the presence of  
Samuel P. Allen  
Donald C. Ross

Parkin Realty Company  
By M. J. Parkin  
its president  
and Donald C. Ross  
its secretary

State of Minnesota,  
County of Olmsted, S.S.

On this 6th day of October A.D. 1938, before me a Notary Public within and for said County and State, personally appeared WILBUR L. PARKIN and EVELYN PARKIN to me personally known, who, being each by me duly sworn did say that they were respectively the president and secretary of the Parkin Realty Company the corporation named in the foregoing instrument, and that the seal affixed to said instrument is the corporate seal of said corporation, and that said instrument was signed and sealed in behalf of said corporation by authority of its Board of Directors and said WILBUR L. PARKIN and EVELYN PARKIN acknowledged said instrument to be the free act and deed of said Corporation.

Donald C. Ross  
Notary Public, Olmsted County, Minnesota.  
My commission expires July 23, 1939.

State of Minnesota,  
County of Olmsted, S.S.

I Frances Underleak County Auditor, in and for said County do hereby certify that the annexed plat was duly approved by the Board of County Commissioners at a meeting held on 11th day of October A.D. 1938, in testimony whereof I have signed my name and affixed the seal of said county this 11th day of October A.D. 1938.

Frances Underleak  
County Auditor

Taxes paid for the year of 1937

W. E. Brial County Treasurer.

Taxes paid and transfer entered this 12th day of Oct. A.D. 1938

Frances Underleak County Auditor

State of Minnesota,  
County of Olmsted, S.S.

I hereby certify that the foregoing plat and instrument were filed in this office on this 12th day of Oct. A.D. 1938 at 10:30 O'clock A.M. and were duly filed in book..... of plats, Page.....

M. J. Little Register of deeds.