

State of Minnesota,)
County of Olmsted,) ss.

I, Chas. H. Armstrong, County Surveyor, in and for the above County and State do hereby certify that at the request of Theodore A. Hein and Anna H. Hein, husband and wife, and Anna B. Waldron, widow, owners of the following described tract or parcel of land within the corporate limits of the City of Rochester, to-wit:-

Block Sixteen (16) in Cummings' Addition.

I have surveyed, platted and staked off said lands into lots, blocks, streets and avenues as a resubdivision of Block Sixteen (16) in the City of Rochester, as shown on the accompanying Plat, to be known and designated as WALDRON'S AND HEIN'S RESUBDIVISION OF BLOCK SIXTEEN (16) CUMMINGS' ADDITION to the City of Rochester, and

I further certify that the said Plat is a true and correct copy of said survey, that all distances are correctly shown on the Plat as designated in feet and decimals of feet, that the monuments for the guidance of future surveys have been correctly placed in the ground as shown thus ; that the outside boundary lines are correctly shown on the Plat, that there are no wet lands except as shown, and that the said tract of land has not heretofore been platted into lots and blocks as an Addition to the City of Rochester, except as Block Sixteen (16) in Cummings' Addition.

Dated this 15th day of December, A. D. 1919.

Chas. H. Armstrong
County Surveyor

Subscribed and sworn to before me
this 15th day of December, A. D. 1919.

Addie M. Laabe
Notary Public.
My Commission expires Dec. 8th 1926.

DEDICATION

We, the undersigned, Theodore A. Hein and Anna H. Hein, husband and wife, and Anna B. Waldron, widow, do hereby certify that we are the owners of the following described tract or parcel of land situate within the corporate limits of the City of Rochester, in the County of Olmsted and the State of Minnesota, to-wit:-

All of Block No. Sixteen (16) in Cummings' Addition to the City of Rochester, Minnesota.

And we further certify that we have caused the same to be surveyed, platted and staked out into lots, blocks, streets, and avenues as a resubdivision of Block No. Sixteen (16) in the City of Rochester, to be known and designated as WALDRON'S AND HEIN'S RESUBDIVISION OF BLOCK SIXTEEN (16) IN CUMMINGS' ADDITION, and that we hereby dedicate the streets and avenues as laid down on the plat to the City of Rochester for the use of the public as such forever.

In testimony whereof, we have hereto set our hands and seals this 20th day of December A. D. 1919.

Theodore A. Hein (Seal)
Anna H. Hein (Seal)
Anna B. Waldron (Seal)

Signed and sealed in the presence of
Witness *Addie M. Laabe*
Witness *W. T. Richardson*

State of Minnesota,)
County of Olmsted) ss.

On this 20th day of December, A. D. 1919, before me a Notary Public, within and for said County personally appeared Theodore A. Hein and Anna H. Hein, husband and wife, and Anna B. Waldron, widow, to me known to be the persons who executed the foregoing instrument and acknowledged that they executed the same as their free act and deed for the purposes therein set forth.

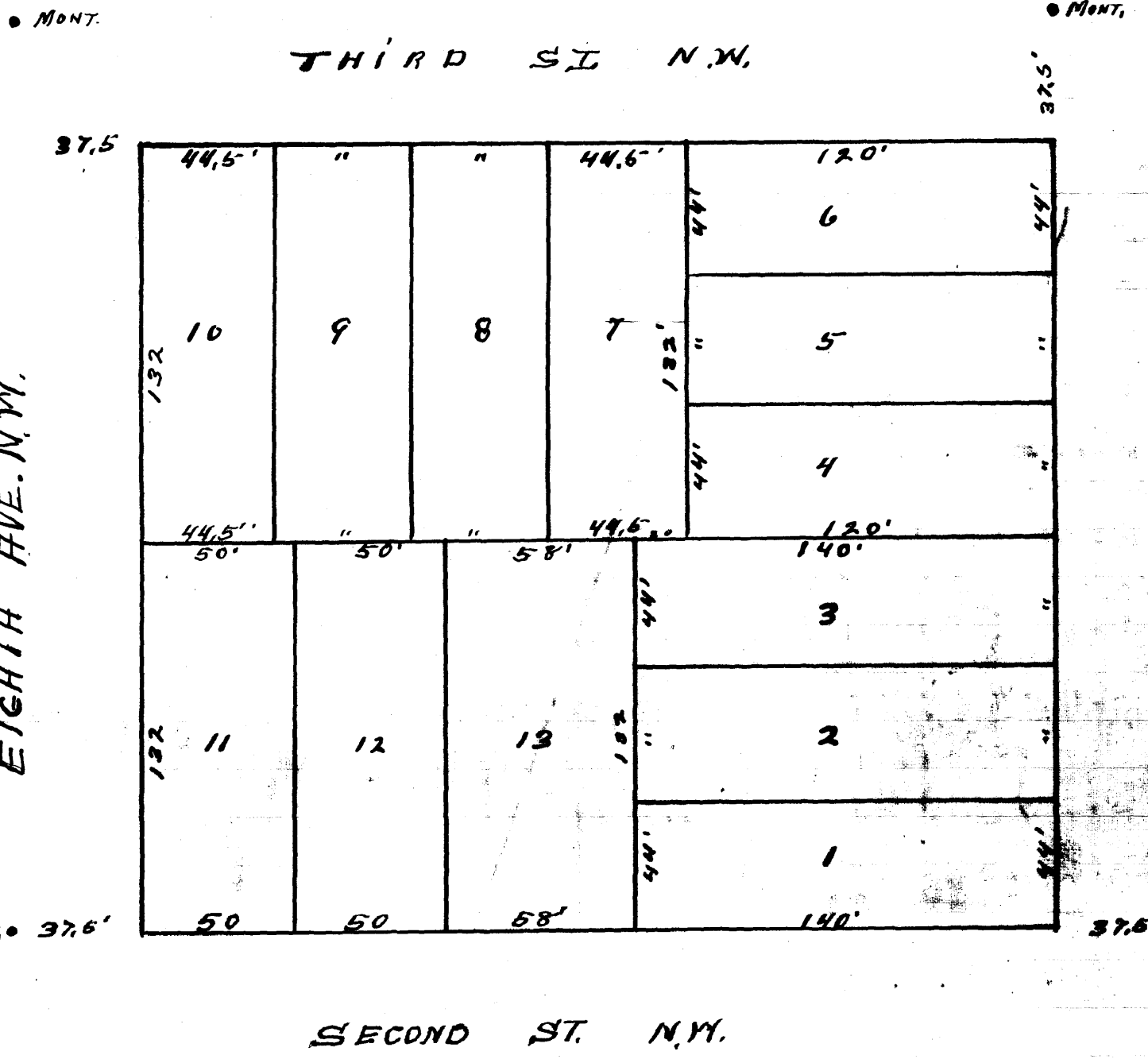
Addie M. Laabe
Notary Public
My Commission expires Dec. 8th 1926.

State of Minnesota,)
County of Olmsted,) ss.
City of Rochester.

I, *A. F. Wright*, City Clerk in and for said City, do hereby certify that on the 22nd day of December, A. D. 1919, the accompanying Plat was duly approved by the Common Council of the said City of Rochester.

In testimony whereof, I have hereunto signed my name and affixed the seal of said City this 23rd day of December, A. D. 1919.

A. F. Wright
City Clerk



Taxes paid and transfer entered this 21st day of December, A. D. 1919

Lester J. Fiegel
County Auditor

Given in the year 1918 on the lands described in this plat.

John J. Luederickson
County Treasurer

State of Minnesota,)
County of Olmsted.)

Recorded this 24th day of December, A. D. 1919, at _____ P.M. in Book of _____, on page _____.

Valen Gelsholdt
Register of Deeds.