

PLUMMER'S  
REPLAT  
"A"

Surveyor's Certificate

State of Minnesota } 55  
County of Olmsted }

I, C. H. Armstrong, City Engineer of the City of Rochester in said County, do hereby certify that at the request of Henry S. Plummer, owner of the following described parcels of land within the corporate limits of the City of Rochester, in Olmsted County, Minnesota, to wit:  
All of Outlots numbered 46, 47, 48, 49, 50, 51, that part of outlot numbered 56 lying and being west of the center line of Tenth Avenue Southwest, if produced, and lots numbered 15, 16, 17, and 18 in block numbered 7, all in Williams, Healy's and Cornforth's Addition to the City of Rochester.

I have surveyed and platted the said lands into lots and streets as a replat of lands in the City of Rochester as shown in the accompanying plat which shall be known and designated as Plummer's Replat "A".

And I further certify that said plat is a correct representation of the survey; that all distances are correctly shown on the plat as designated in feet and decimals of feet; that the monuments for guidance in future surveys have been correctly placed in the ground at the places designated thus  $\circ$  or  $\square$ ; that the outside boundary lines are correctly designated on the plat; that there are no wet lands to be designated thereon; that said tract of land has been heretofore platted but has not been subdivided, except that part of block numbered 7 above specified.

Dated this 3rd day of JUNE 1929.

C. H. Armstrong  
City Engineer

State of Minnesota } 55  
City of Rochester }  
County of Olmsted }

I, A. F. Wright, City Clerk in and for said city, do hereby certify that on the 3rd day of JUNE A.D. 1929 the accompanying and annexed plat was duly approved by the Common Council of the City of Rochester.

In testimony whereof I have hereunto signed my name and affixed the seal of the said City of Rochester this 4th day of JUNE A.D. 1929

A. F. Wright  
City Clerk

Taxes paid and transfer entered this 13th day of JUNE A.D. 1929

Arnold L. Hoar  
County Auditor

Taxes for the year 1928 on lands described are paid.

Wm. J. ...  
County Treasurer

Dedication

We, Henry S. Plummer and Daisy B. Plummer, husband and wife, do hereby certify that Henry S. Plummer is the owner of the parcels of land described in the foregoing and annexed Surveyor's Certificate; that we have caused the same to be surveyed and platted into lots and streets as a replat of outlots and lots therein described; that we dedicate to the public use the streets shown on the plat.

Dated JUNE 3RD 1929

In the presence of

R. V. Blathen  
Shelby ...

Henry S. Plummer  
Daisy B. Plummer

State of Minnesota } 55  
County of Olmsted }

Filed for record this 13th day of JUNE A.D. 1929 at 10:15 o'clock A.M. and recorded in book of Plats at Page

Wm. J. ...  
Register of Deeds

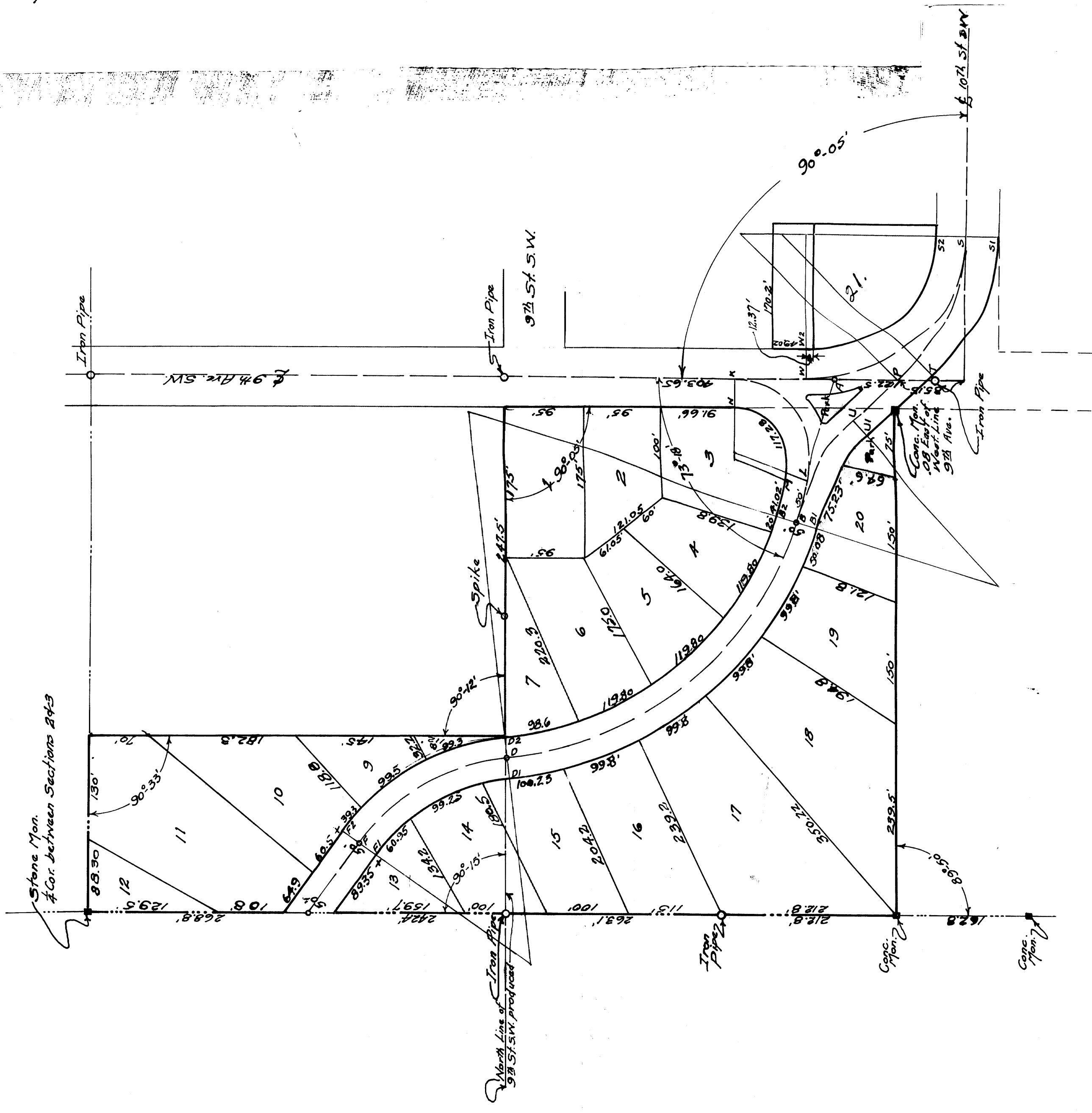
104687.

State of Minnesota } 55  
County of Olmsted }

On this 3rd day of JUNE 1929, before me, a notary public within and for said county, personally appeared Henry S. Plummer and Daisy B. Plummer, his wife, to me known to be the persons described in and who executed the foregoing instrument and acknowledged that they executed the same as their free act and deed.

R. V. Blathen

R. V. Blathen  
Notary Public, Olmsted County, Minnesota,  
My Commission expires Nov. 3, 1934



- Curve F2-D2  
A = 47° 57'  
D = 20° 02' 16"  
T = 127.12  
R = 285.85  
L = 239.22
- Curve F1-D1  
A = 47° 57'  
D = 20° 02' 16"  
T = 127.12  
R = 285.85  
L = 239.22
- Curve LK  
A = 106° 42'  
D = 63° 12'  
T = 182.08  
R = 50.71  
L = 117.28
- Curve BD  
A = 66° 57'  
D = 19° 01' 22"  
T = 274.5  
R = 415.12  
L = 514.21
- Curve BU  
A = 50° 08'  
D = 22° 02' 11"  
T = 70.0  
R = 260.03  
L = 123.61
- Curve W-5  
A = 89° 55'  
D = 29° 03' 17"  
T = 156.88  
R = 197.16
- Curve T-51  
A = 46° 45'  
D = 21° 45' 44"  
T = 113.83  
R = 263.35
- Curve P-5  
A = 46° 45'  
D = 21° 45' 44"  
T = 113.83  
R = 263.35
- Curve B1-U1  
A = 30° 08'  
D = 24° 22' 7"  
T = 63.27  
R = 235.03  
L = 123.61
- Curve W-2-52  
A = 69° 55'  
D = 35° 33' 2"  
T = 159.43  
R = 159.66
- Curve B1-D1  
A = 66° 57'  
D = 19° 01' 22"  
T = 274.5  
R = 415.12  
L = 514.21
- Curve B1-U1  
A = 30° 08'  
D = 24° 22' 7"  
T = 63.27  
R = 235.03  
L = 123.61
- Curve W-2-52  
A = 69° 55'  
D = 35° 33' 2"  
T = 159.43  
R = 159.66

Notes:  
Right of Way is 33' due south of the intersection of the north line of 9th St. SW produced and the center line of 10th Ave. SW, if produced.  
Measurements given on the curves are chord measurements.