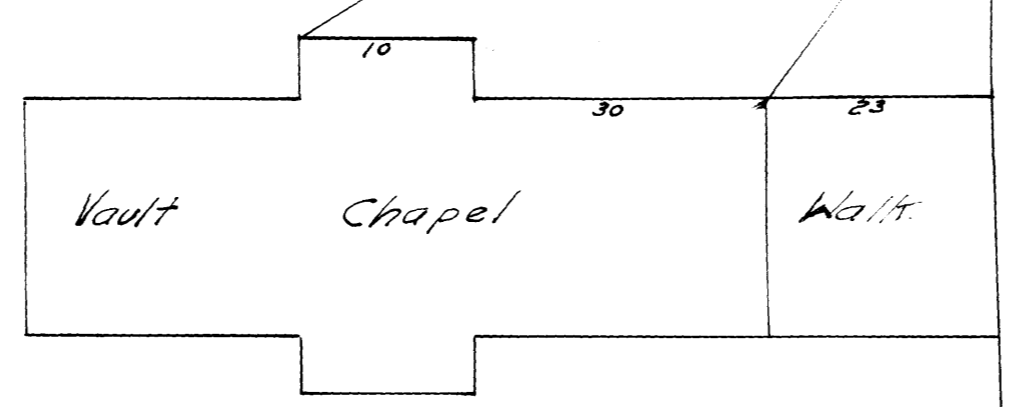
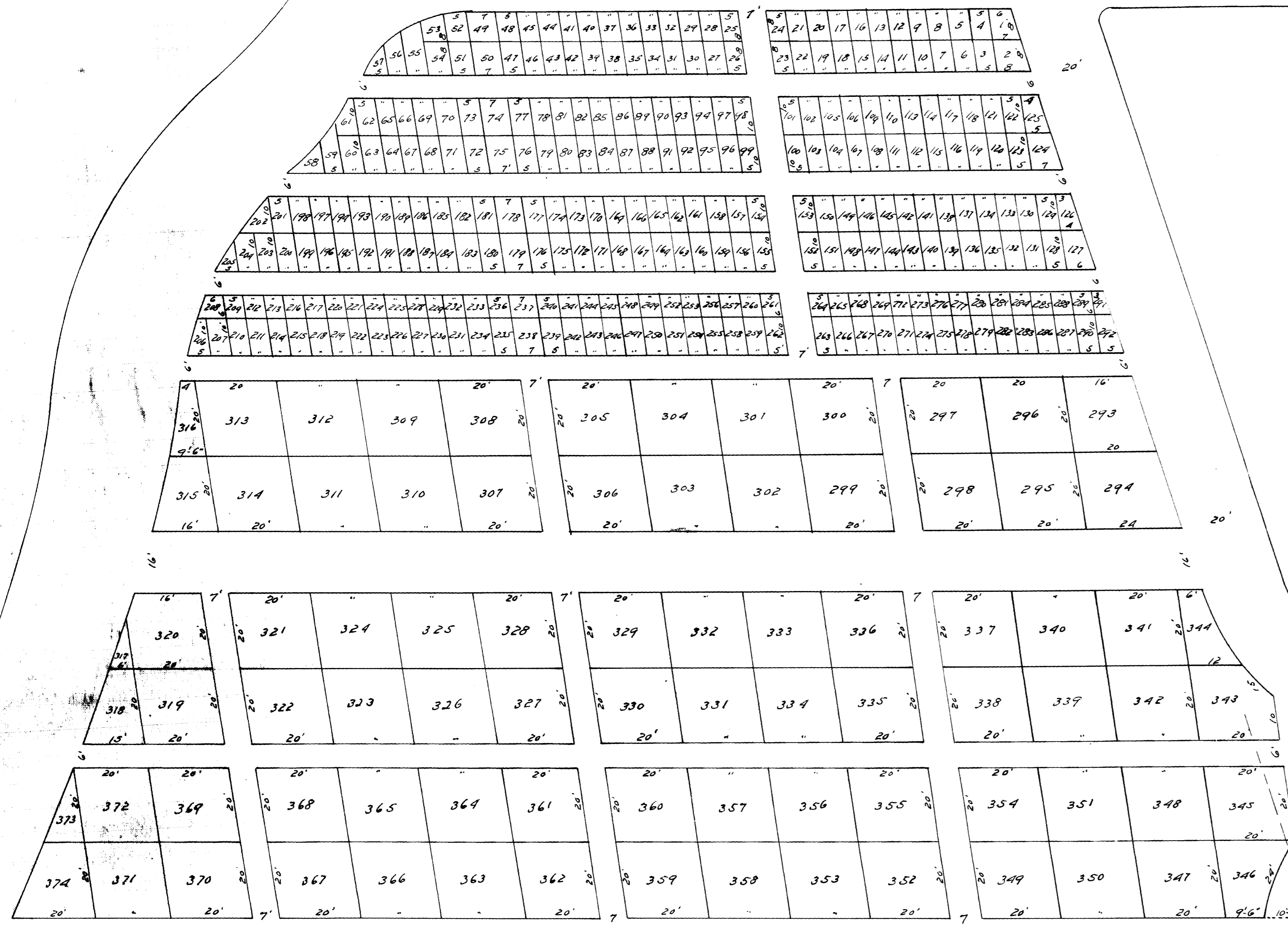


OAKWOOD CEMETERY

SECTION 6.

Scale 1"=20' J.C. Utton, 1913.



I, J. C. Utton, Surveyor do hereby certify that the foregoing plat is a correct map of parts of Lots, Twenty (20) and Twenty-one (21), State Subdivision of School Section 36, T107, R14 in Olmsted Co, Minn. as surveyed and laid out by me under the direction of the trustees of The Rochester Cemetery Association, to be known as Section Six; That the plat is a correct representation of the survey; that the size of all lots, avenues, alleys and walks are correctly shown on the plat; that the monuments for guidance of future surveys have been placed on the ground, as shown, and that the outside boundary lines are correctly designated on the plat.

July 20, 1912.

J. C. Utton
Surveyor

The foregoing is a map of a portion of Oakwood Cemetery owned by The Rochester Cemetery Association, situate on Lots, Twenty (20) and Twenty-one (21) in State Subdivision of School Section, thirty-six (36), in Township one hundred and seven (107) North of Range fourteen (14) West, in Olmsted County, Minnesota, to be known as Section Six, as surveyed and divided into lots with necessary avenues, alleys and walks, by J. C. Utton, Surveyor, under the direction of the trustees of said Association.

Dated July 20, 1912.
Witness my hand and seal this 21st day of July, 1912.
The Rochester Cemetery Association.
By Wm. W. Eaton President.
Attest Wm. W. Eaton Secretary.

State of Minnesota,
County of Olmsted, ss.
On this 21st day of July, 1912, before me a Notary Public, within and for said County, personally appeared, Wm. W. Eaton and George B. Doty, to me personally known, who, being by me duly sworn, did say that the said Wm. W. Eaton is the President and the said George B. Doty is the Secretary of the corporation named in the foregoing instrument, and that the seal annexed to said instrument is the corporate seal of said corporation and that said instrument was signed and sealed in behalf of said corporation by authority of its Board of Trustees and said Wm. W. Eaton and George B. Doty acknowledge said instrument to be the act and deed of said corporation.

Notary Public, My Commission expires
Nov 15, 1920

State of Minnesota,
County of Olmsted ss.

I hereby certify that the foregoing plat and instruments were filed in this office on the 23rd day of February A.D. 1917, at 3 1/2 o'clock, and were duly recorded in book ___ of page ___ of the Register of Deeds.

Refer to Sec. 3