

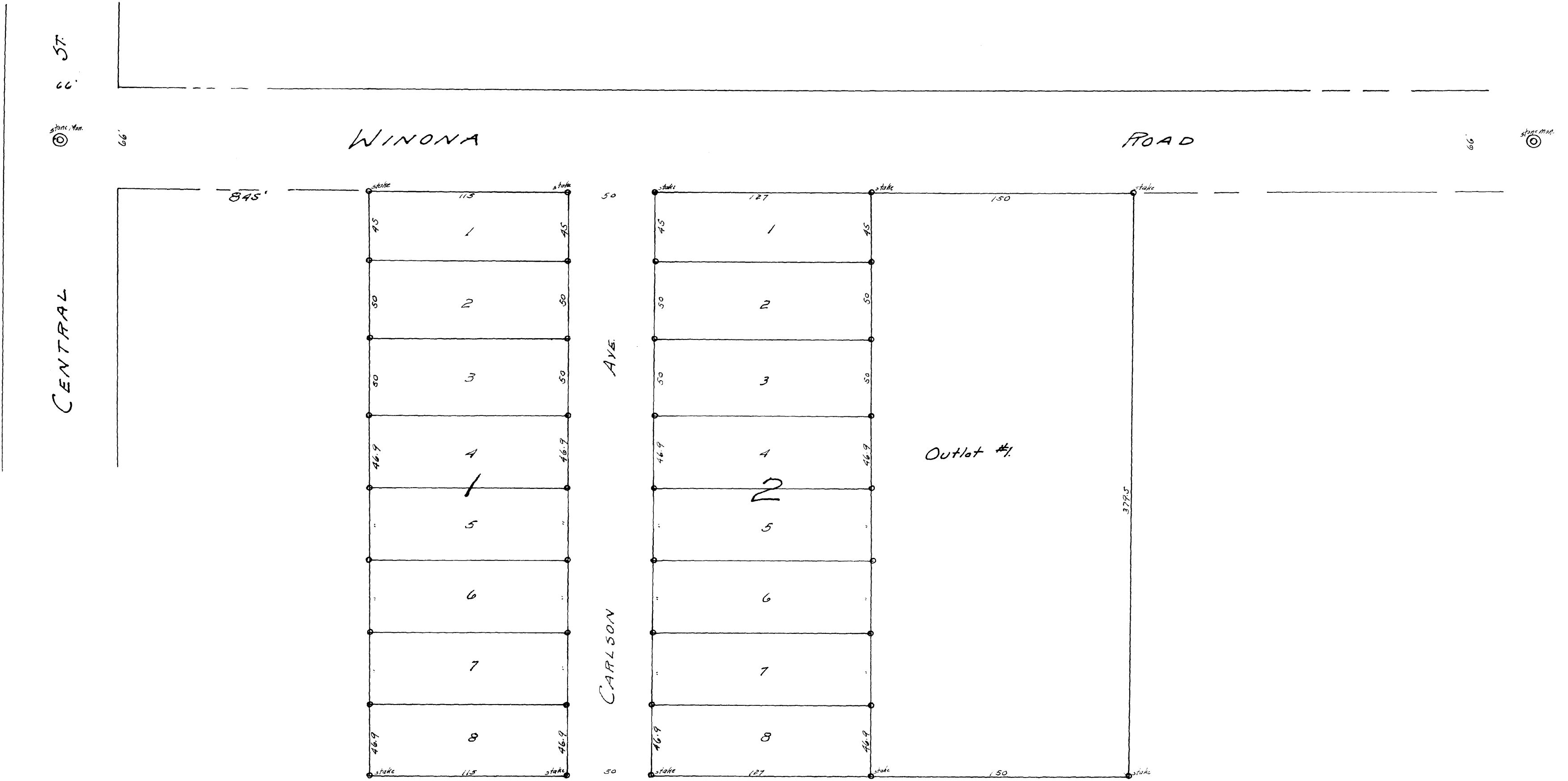
FANNING'S SUB-DIVISION

OF

LOTS 7 & 8, AUDITOR'S PLAT 'A'

Scale 1" = 50'

J.C. Utton 1917.



I, J.C. Utton, do hereby certify, that at the request of Edward Fanning and Carrie M. Fanning, his wife, owners of the following tracts or parcels of land, lying & being within the corporate limits of the City of Rochester, County of Olmsted, State of Minnesota, to-wit: Lots 7 & 8 in Auditor's Plat 'A' in the City of Rochester, I have surveyed & platted said tracts or parcels of land, above described into Blocks, Lots and Streets as an Addition to the City of Rochester, said Addition to be known and designated as 'Fanning's Subdivision'. I further certify, that the accompanying Plat is a true and correct representation of the survey, that all the distances are correctly shown on plat in feet and decimals of a foot, that monuments for guidance of future surveys, have been placed as shown, thus, that the outside boundary lines are correctly designated on the plat, that there are no wet lands thereon and that said tracts of land have not been here to fore platted into Lots and Blocks.

Dated this 2nd day of January 1917.

J.C. Utton, Surveyor.

Subscribed & sworn to before me, a Notary Public, this 24th day of June, 1917.
C.E. Callaghan, Notary Public, My Commission expires Oct 4th 1917.

State of Minnesota,
County of Olmsted,

City of Rochester,
T. A. F. Wright, City Clerk in and for said City of Rochester, do hereby certify that on the 5th day of February 1917 the accompanying plat was duly approved by the Common Council of the City of Rochester. In testimony whereof, I have hereunto signed my name and affixed the seal of said City, this 6th day of February 1917.
T. A. F. Wright, City Clerk.

State of Minnesota, ss.
County of Olmsted.

Taxes paid and transfer entered this 31st day of May 1917.

Notary J. Leigeb
County Auditor.

State of Minnesota, ss.
County of Olmsted.

We, the undersigned, Edward Fanning and Carrie M. Fanning, his wife, do hereby certify that we are the owners of the following described tracts or parcels of land, situated and being within the corporate limits of the City of Rochester, County of Olmsted, State of Minnesota, to-wit: Lots 7 & 8 in Auditor's Plat 'A' to the City of Rochester, and we do further certify that we have caused the same to be surveyed and platted into Blocks, Lots and Streets as an Addition to the City of Rochester, to be known as Fanning's Subdivision, and that we do for ourselves our heirs and assigns, hereby grant and dedicate the streets as shown in the accompanying plat, to the City of Rochester and the public use forever. In testimony whereof we have hereunto set our hands and seals this 2nd day of January 1917.

Witnesses.

Edward Fanning (Seal)

Carrie M. Fanning (Seal)

State of Minnesota, ss.
County of Olmsted.

On this 23rd day of June 1917 before me a Notary Public in and for said County and State, personally appeared Edward Fanning and Carrie M. Fanning, his wife, to me well known to be the persons who executed the foregoing instrument and acknowledged that they executed the same as their own free act and deed.

C.E. Callaghan, Notary Public, My Commission expires Oct 4th 1917.

State of Minnesota, ss.
County of Olmsted.

Filed for record this 1st day of June 1917 at 9 o'clock A.M. and recorded in Book of Plats on page

Walton Coleholdt
Register of Deeds