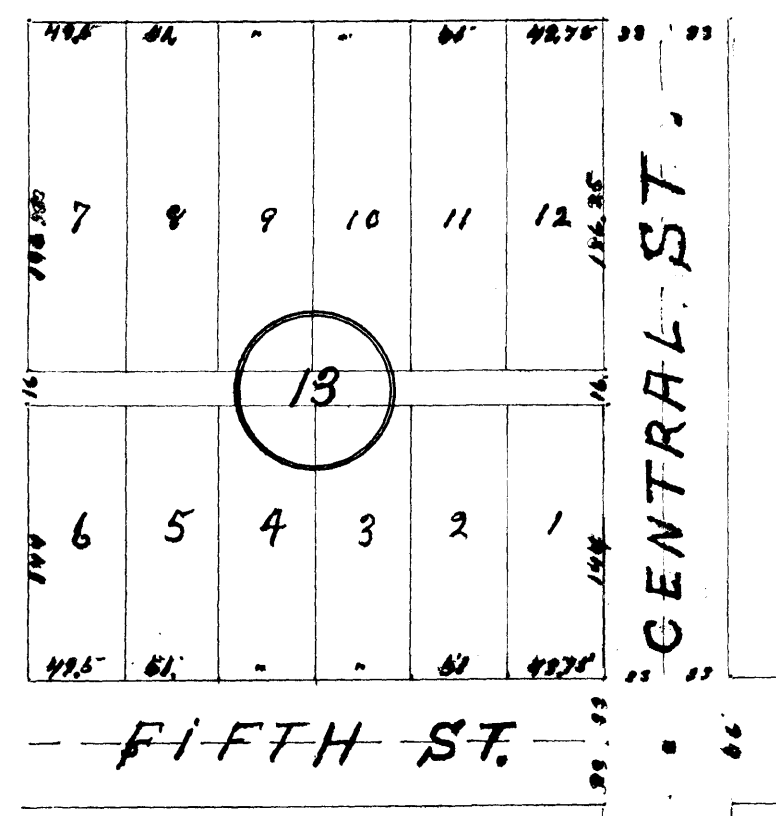


ELLIOTT AND HOFFMANN'S
SUBDIVISION
OF

LOT 13, STATE SUBDIVISION OF
SCHOOL SECTION NO 36 T. 107 N.
R. 14 W 5TH P.M. MINN
SCALE ONE INCH = 100 FEET
SURVEYED OCT. 31st 1907
C. H. Armstrong
County Surveyor
Olmsted County Minn.



We, the undersigned David Elliott and Tillie Elliott, his wife, and August C. Hoffmann and Emma Hoffmann, his wife, do hereby certify that we are the owners of the following described real estate situate, lying and being in the City of Rochester in the County of Olmsted and State of Minnesota and described as follows, to-wit:-

Lot Thirteen (13) of State Subdivision of School Section Thirty six (36) in Township One hundred and seven (107) North of Range Fourteen (14) West of the Fifth Principal Meridian, and that we caused the same to be surveyed and platted as a Subdivision of said Lot Thirteen (13) as shown on the accompanying plat, and that we do for ourselves, our heirs and assigns hereby dedicate the streets and alleys as laid down on said plat to the City of Rochester and the public, use as such forever.

In Testimony Whereof we have hereunto set our hands and seals this

25th day of November A.D. 1907.

Signed, Sealed and Delivered in Presence of

Henry A. Christensen
Elizabeth Nelson

David Elliott (SEAL)
Tillie S. Elliott (SEAL)
August C. Hoffmann (SEAL)
Emma Hoffmann (SEAL)

State of Minnesota,
County of Olmsted. ss.

On this 25th day of November A. D. 1907, before

me, a Notary public within and for said County, personally appeared David Elliott and Tillie Elliott, his wife, and August C. Hoffmann and Emma Hoffmann, his wife, to me known to be the persons described in and who executed the foregoing instrument and acknowledged that they executed the same as their free act and deed.

Henry A. Christensen

Notary Public, Olmsted County, Minnesota.
My commission expires February 25, 1909.

State of Minnesota,
County of Olmsted. ss.

No. 40036 Filed for record this 4th day of December A.D. 1908 and recorded in Book "A" of Plats on page 60 at 3:34 o'clock P.M.

Walter Eckholdt
Register of Deeds.

Taxes paid and transfer entered the 4th day of November A.D. 1907.

J. A. Orsford
County Auditor.

I, Charles H. Armstrong County Surveyor in and for the County of Olmsted and State of Minnesota, do hereby certify that at the request of David Elliott and Tillie P. Elliott, his wife, and August C. Hoffmann and Emma Hoffmann, his wife, I did on the 31st day of October A.D. 1907 survey, stake off and lay out into lots, blocks, streets and alleys Lot Thirteen (13) in the State Subdivision of School Section Thirty six (36) in Township One Hundred and Seven (107) North of Range Fourteen (14) West, of the Fifth Principal Meridian in the County of Olmsted and State of Minnesota and that the annexed plat is true and correct; that the lots, blocks, streets and alleys are of the size and dimensions shown on said plat and that the boundaries of lots, blocks, streets and alleys are parallel to the center line of Fifth Street and Central Avenue as the same have been long established. Measurements in feet and decimals of feet. Stone monuments marked thus ■.

Dated at Rochester, Minnesota, this 2nd day of November A.D. 1907.

Charles H. Armstrong
County Surveyor.

State of Minnesota,
County of Olmsted. ss.

I, Henry Kalb, City Clerk in and for the City of Rochester, Minnesota, do hereby certify that the foregoing plat was duly approved by the Common Council of said city of Rochester this 20th day of January A.D. 1908.

Henry Kalb
City Clerk.