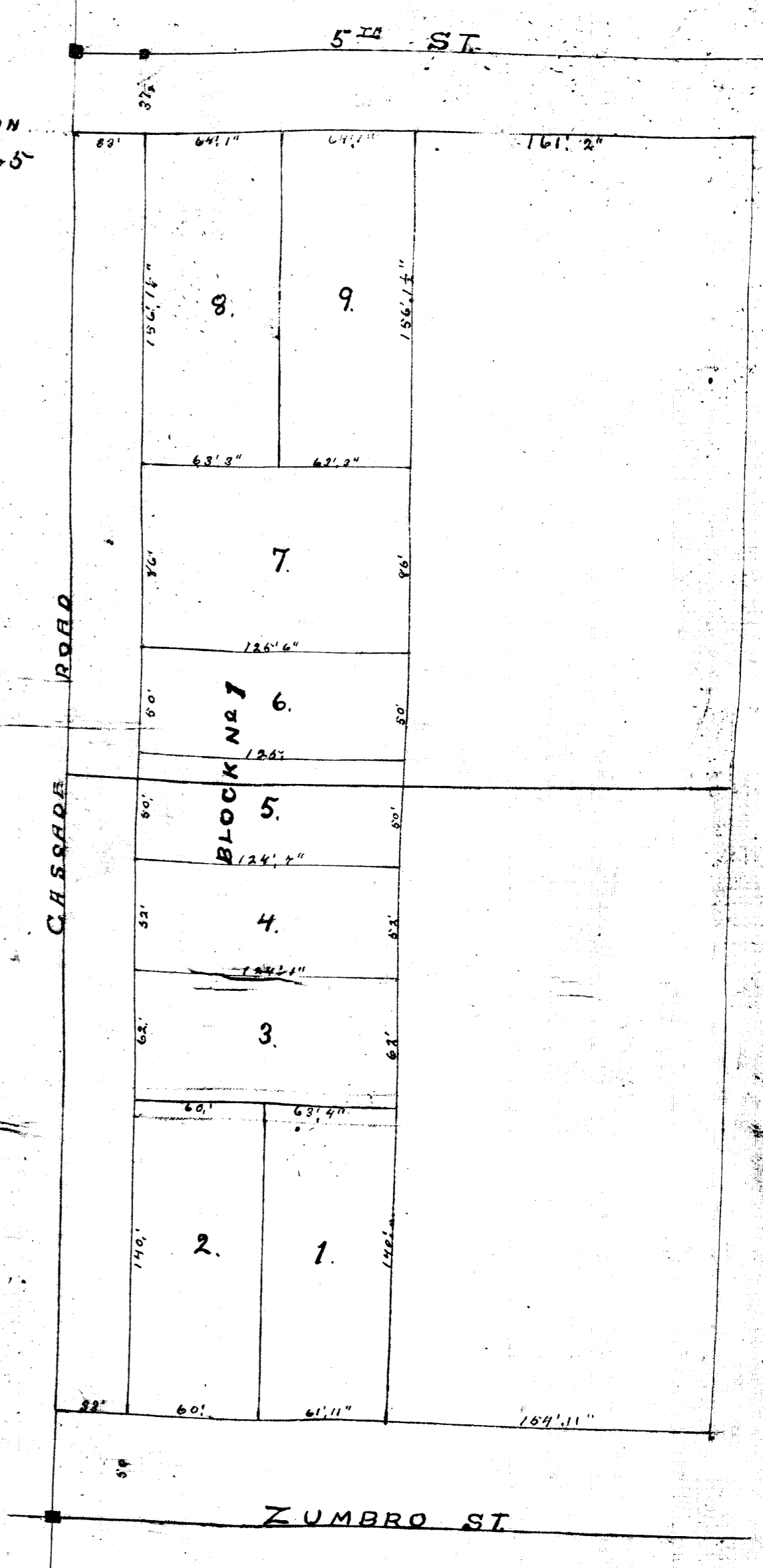
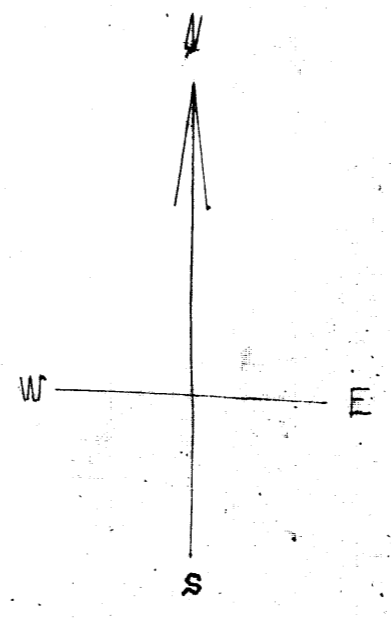


PLAT
BLOCK ONE
ELLIOTT'S SUBDIVISION
OF
West 1/2 of Lots 4 & 5
CUMMINGS ADDITION
TO ROCHESTER
Scale 1 inch = 60 ft.



Charles H. Armstrong County Surveyor in and for the County of Olmsted State of Minnesota
do hereby certify that at the request of David Elliott and Will P. Elliott his wife
did on the 13th day of July 1906 Survey Subdivide stake out and plat in to Blocks
and lots and streets for the purpose of laying out and establishing a subdivision of the
West one half of lots four (4) and five (5) of Cummings addition to the City of Rochester
Survey and subdivision plat is a true and correct representation of the aforementioned
boundary lines are parallel with 5th line
Stone monuments as marked on the plat thus
Measurements in feet and inches
Witness my hand and seal this 13th day of July A.D. 1906. Charles H. Armstrong
County Surveyor

State of Minnesota }
County of Olmsted } ss.

On this 13th day of July 1906 before me Register of Deeds in and for the
County of Olmsted personally appeared Charles H. Armstrong to me known to be the person who
executed the foregoing and within Certificate as County Surveyor and acknowledged that he
executed the same to his own free will and deed and being sworn says that the same
is true.
James Kelly
Register of Deeds

Be it known that David Elliott and Will P. Elliott his wife the owners of the lands
herein plated and described in the foregoing surveyors certificate did cause the same to be laid out
staked out and subdivided into blocks lots and streets in the manner as set forth and
described in the annexed plat for the purpose of laying out and establishing an addition
to the City of Rochester to be known as Elliott's subdivision of the West one half (1/2) of lots
No. four (4) and five (5) of Cummings's addition to the City of Rochester
that the annexed plat is a true representation and that the streets and lot are dedicated
to the use of the public forever.
Witness our hands and seal this 14th day of July 1906. David Elliott
Will P. Elliott

State of Minnesota }
County of Olmsted } ss.

On this 14th day of July 1906 before me a Notary Public in and for the County of Olmsted
personally appeared David Elliott and Will P. Elliott his wife to me known to be the persons
who executed the foregoing instrument and acknowledged that they executed the same as their
own free will and deed for the purpose as herein set forth.

Signed sealed and delivered in the presence of
Witness Nellie Waldman
Witness Mary Hartway
Mary Hartway
Notary Public
Olmsted County, Minnesota
My commission expires January 5, 1912

State of Minnesota }
County of Olmsted } ss.
City of Rochester.

I Henry Hall City Clerk and Recorder in and for the City of Rochester do hereby
certify that foregoing and within Plat was duly approved by the Common Council of
the City of Rochester at a meeting held on the 13th day of July 1906.
Henry Hall
City Clerk and Recorder

State of Minnesota }
County of Olmsted } ss.

Notary Public do hereby certify that taxes are paid and transferred this 23rd
day of July 1906.
J. E. O'Keefe
County Auditor

State of Minnesota }
County of Olmsted } ss.
Office of Register of Deeds

3608

This office for record on the 13th day of August 1906 and was duly
recorded in Book C Page 11 of Plat
James Kelly
Register of Deeds