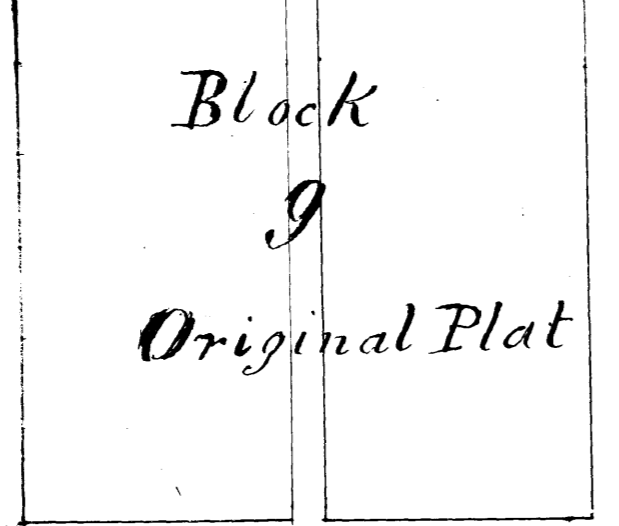
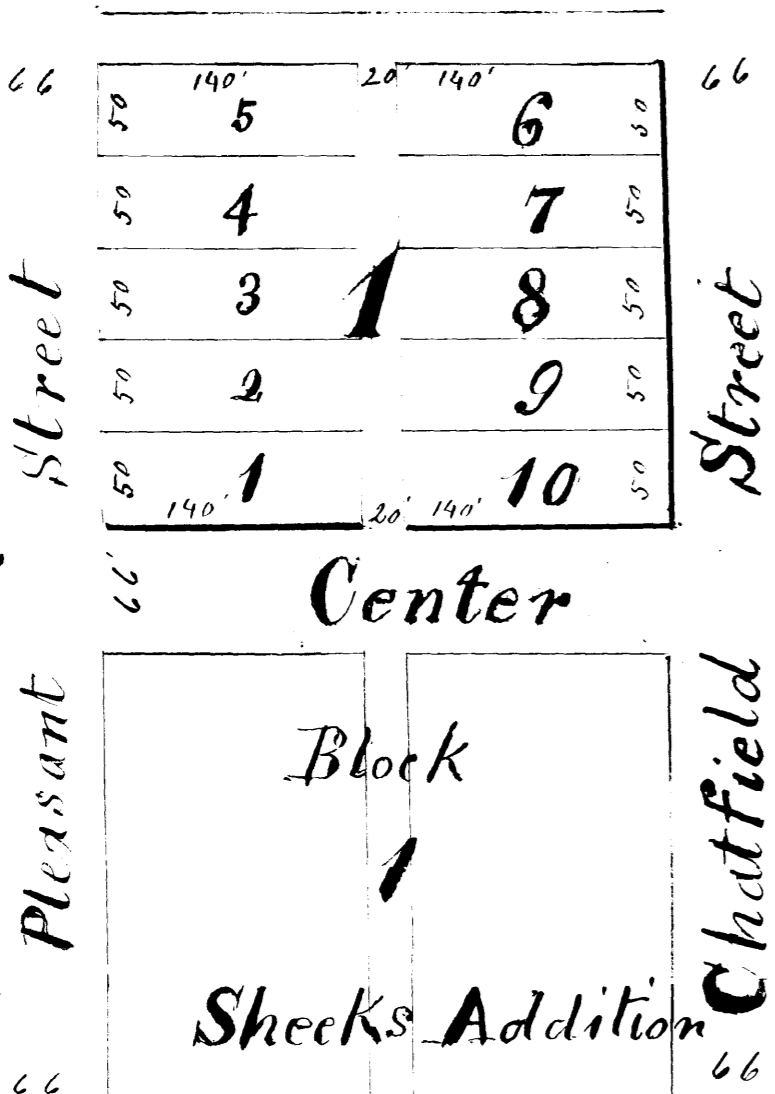


SCHOOL ADDITION TO DOVER CENTER.

Explanation.
School Addition to Dover Center - is situated on the old School Lot, on the East Side of the North East quarter of the North East part of Section Number Twenty One in the Town of Dover Winsted County Minnesota, and lies immediately West of Block Nine in the Original Plat of Dover Center, and North of Block One in Sheeks Addition. The center of Chatfield Street, is the Section line between Section Twenty One & Twenty Two. The width of its streets and alleys, and the size of the lots are noted in feet on the plat.

Thomas Hunter
Surveyor.



I hereby certify that "School Addition to Dover Center" was surveyed by me, and that the accompanying Plat, with explanation is in correct delineation of the same.

Thomas Hunter
Surveyor.

We James H. Langan, W. J. Mernick, R. K. Evans
Justices of School District No. 125 of the County of Olustee in the State of Minnesota do hereby certify that said school district is owner and proprietor of "School Addition" to Dover Center as above platted and that we do hereby dedicate the streets and alleys therein platted to the public use.

Witness our hands and seals this 11th day of December 1878.

James H. Langan
W. J. Mernick
R. K. Evans

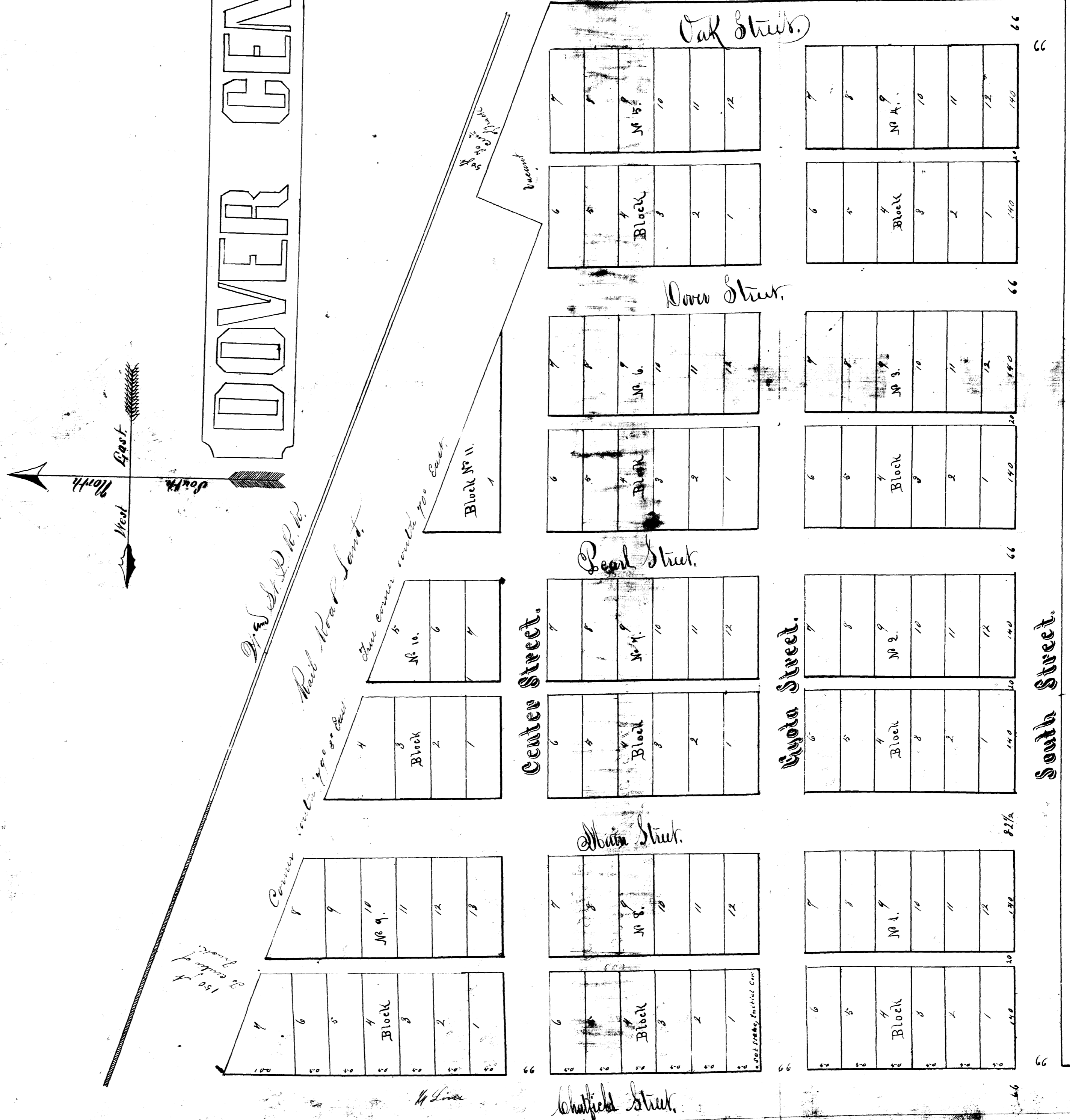
Justices of School District No. 125 of the County of Olustee Minn.

State of Minnesota
County of Winona

Be it remembered that on this 11th day of December A.D. 1878 personally appeared before me James H. Langan and in the State of Minnesota duly acknowledged that they executed and caused to be annexed and platted the above School Addition to Dover Center and did also execute the above certificate.

Notary Public
W. C. Miller

DOVER CENTER.



State, and as per record in my office. See page 38, 39, 40, 41, 42, 43, 44, 45, 46, 47, 48, 49, 50, 51, 52, 53, 54, 55, 56, 57, 58, 59, 60, 61, 62, 63, 64, 65, 66, 67, 68, 69, 70, 71, 72, 73, 74, 75, 76, 77, 78, 79, 80, 81, 82, 83, 84, 85, 86, 87, 88, 89, 90, 91, 92, 93, 94, 95, 96, 97, 98, 99, 100.

A hereby certify that the above is a correct and true copy of the original plat as filed in my office. See page 38, 39, 40, 41, 42, 43, 44, 45, 46, 47, 48, 49, 50, 51, 52, 53, 54, 55, 56, 57, 58, 59, 60, 61, 62, 63, 64, 65, 66, 67, 68, 69, 70, 71, 72, 73, 74, 75, 76, 77, 78, 79, 80, 81, 82, 83, 84, 85, 86, 87, 88, 89, 90, 91, 92, 93, 94, 95, 96, 97, 98, 99, 100.

W. C. Miller
Notary Public

Office of Register of Deeds
Winona County Minnesota
This office for Rent on the 23rd day of December 1867 was taken by me and incorporated into Book 14 of Town Plats on page 38.

Scale 100 feet to the inch. Winona 90 80