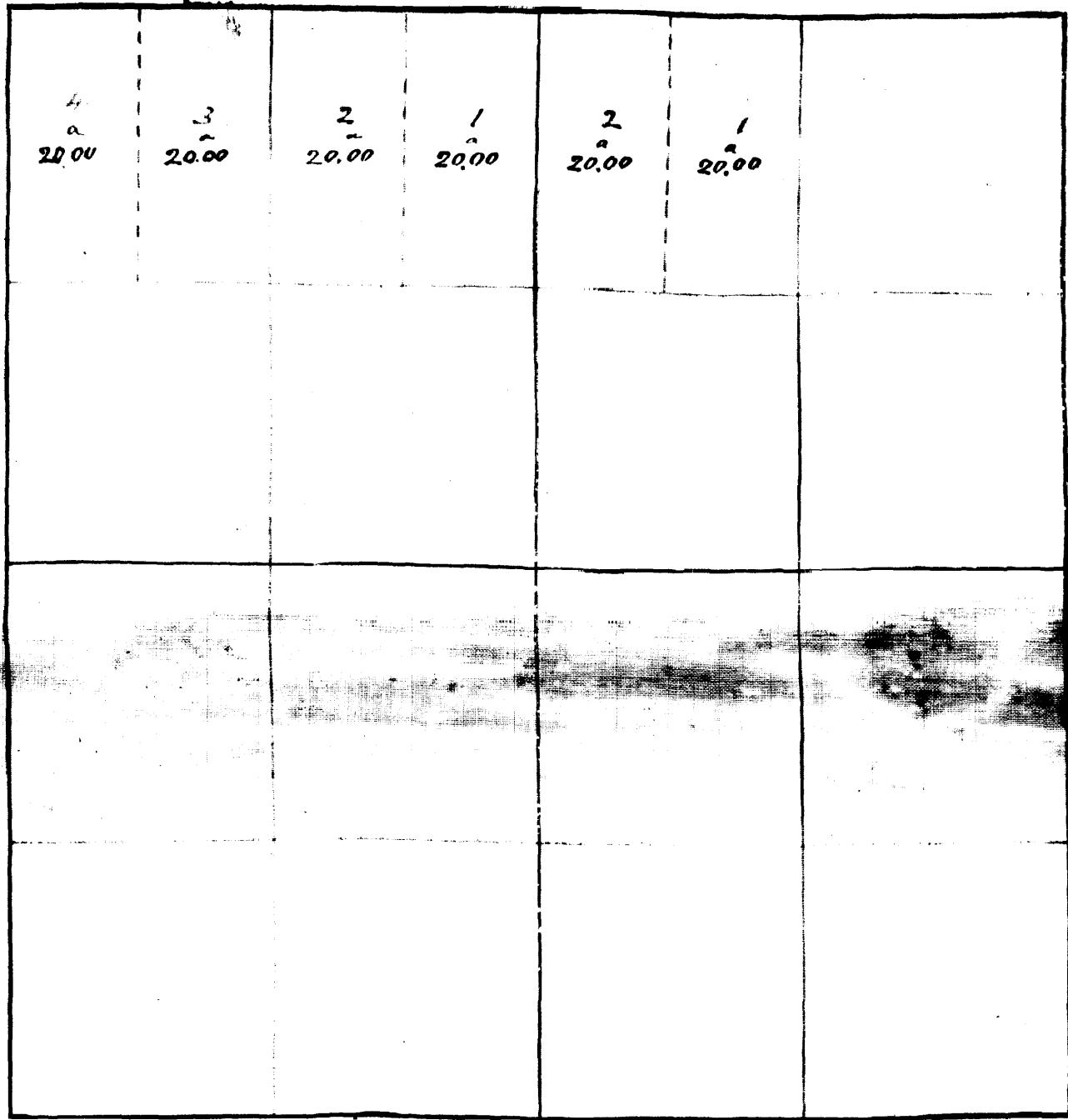
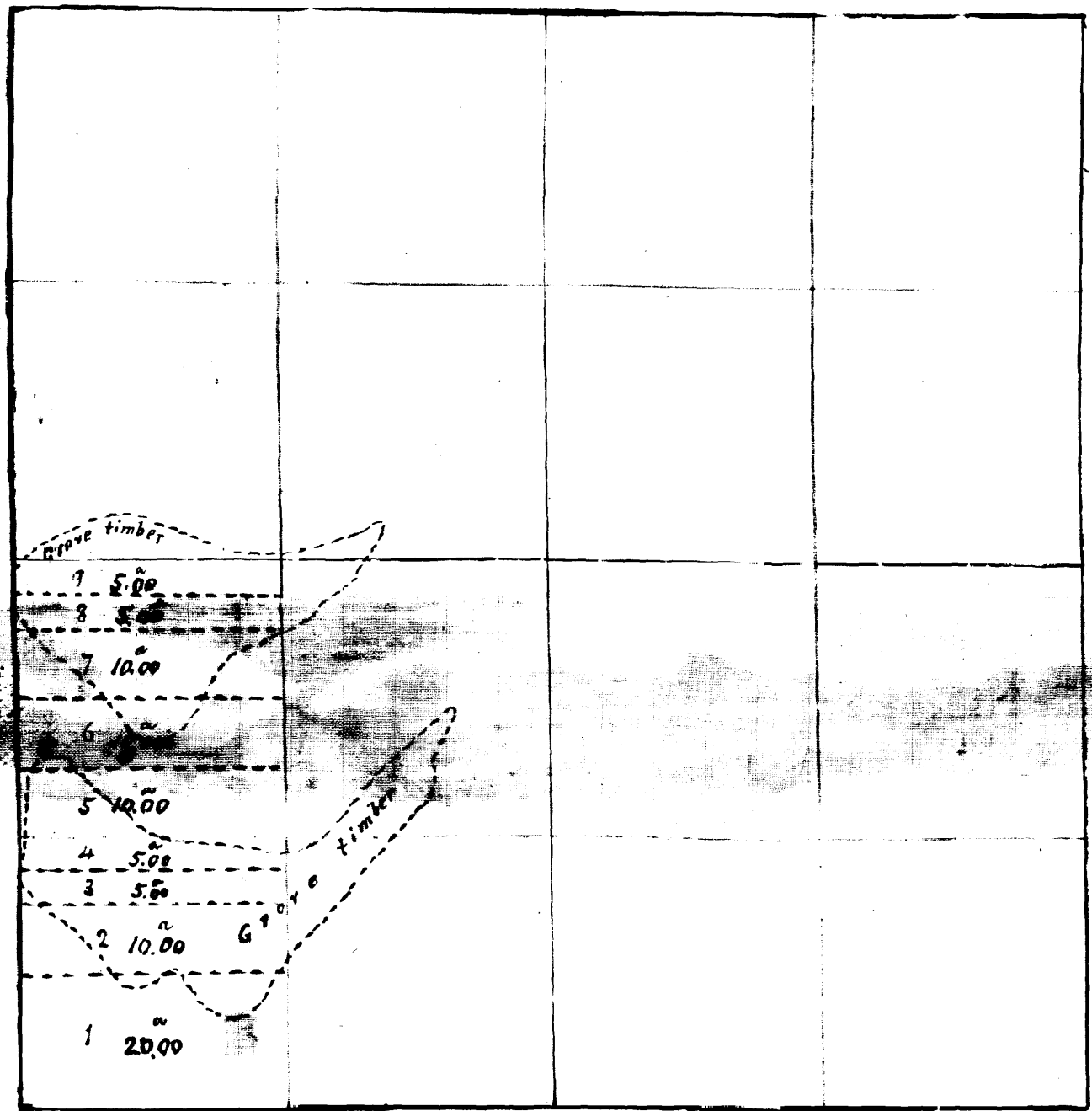


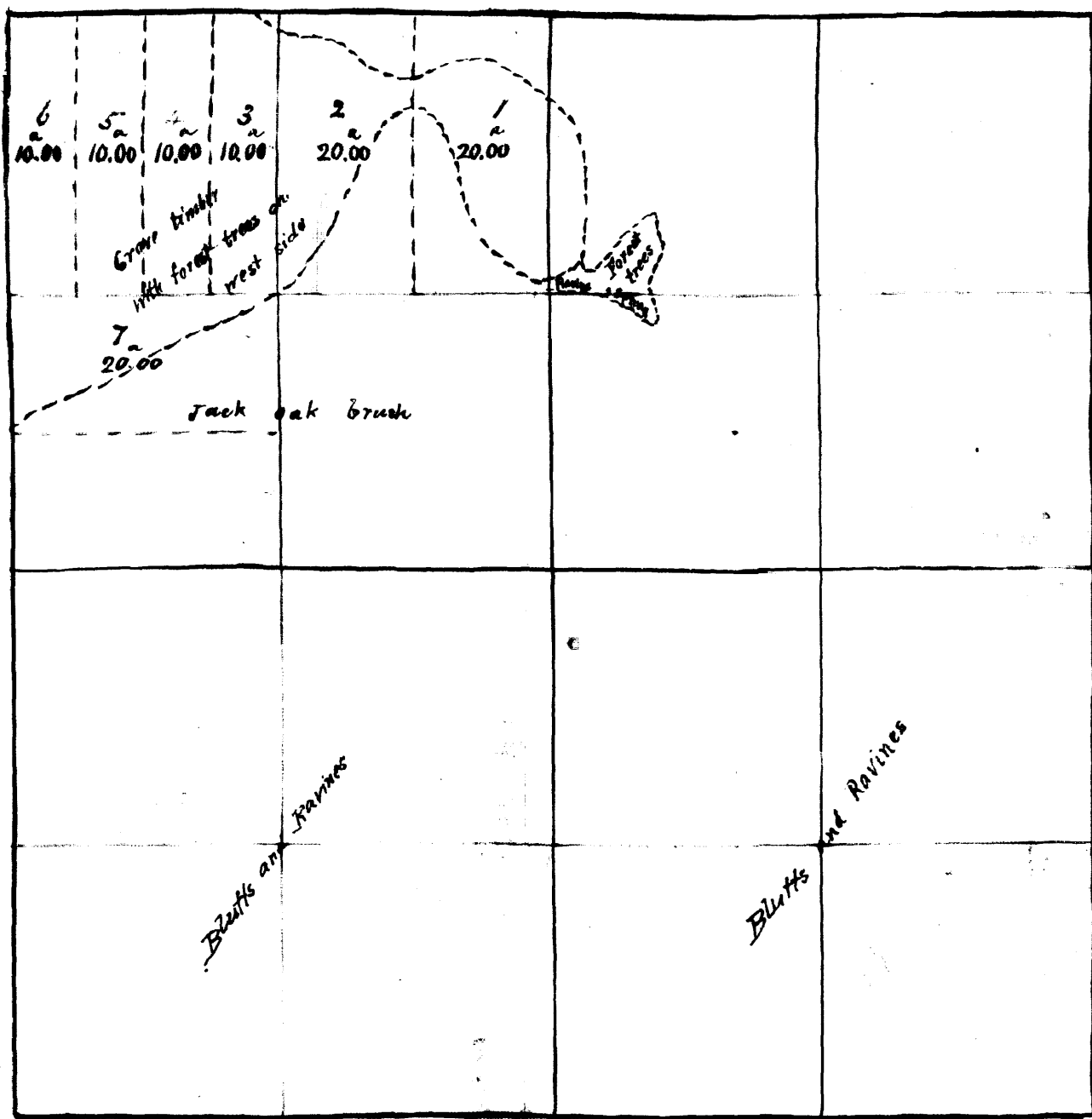
Sec. 16, T. 107, R. 15.



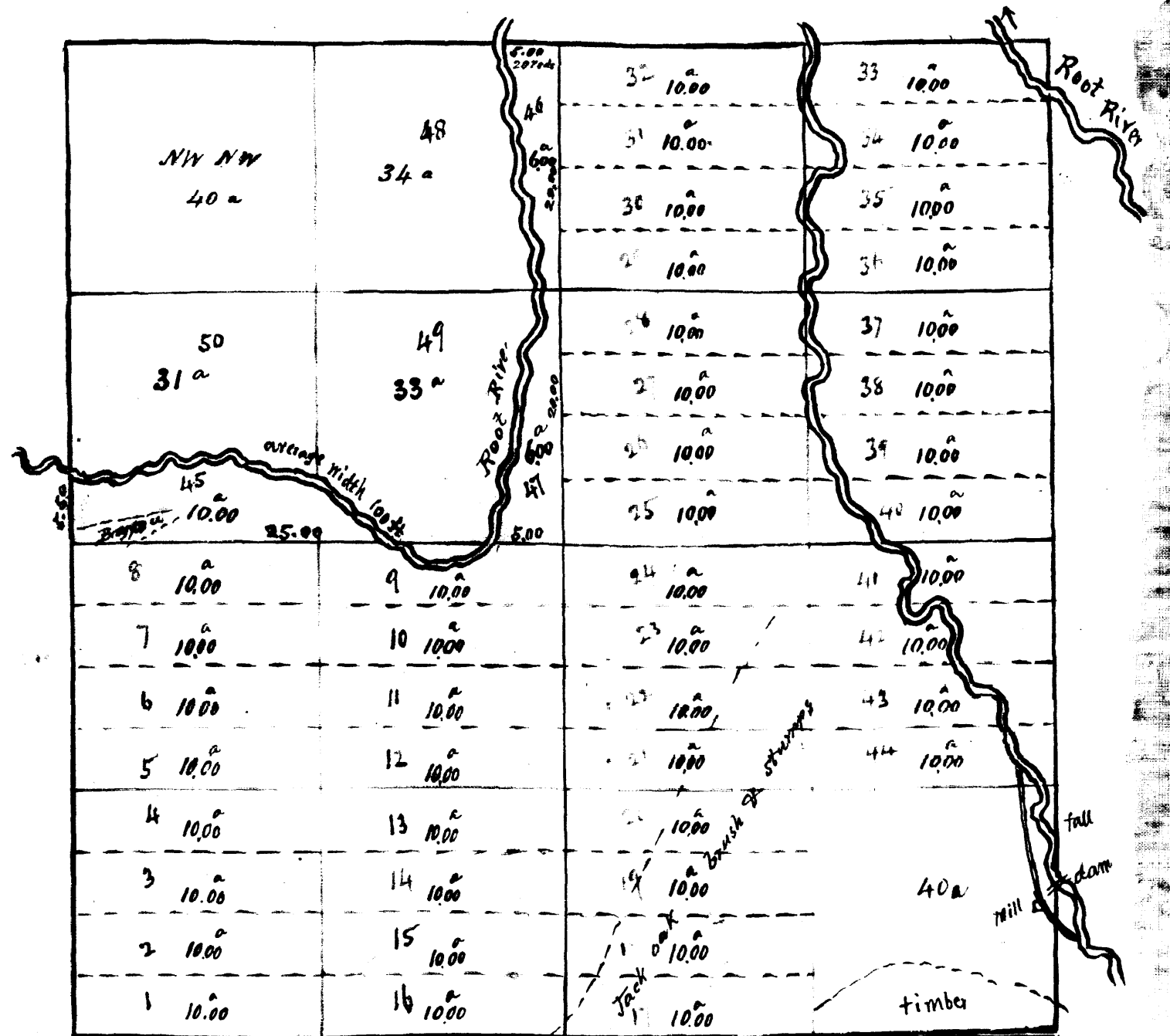
Sec. 36, T. 108, R. 13.



Sec. 16, T. 106, R. 14.



Sec. 16 T. 105, R. 13

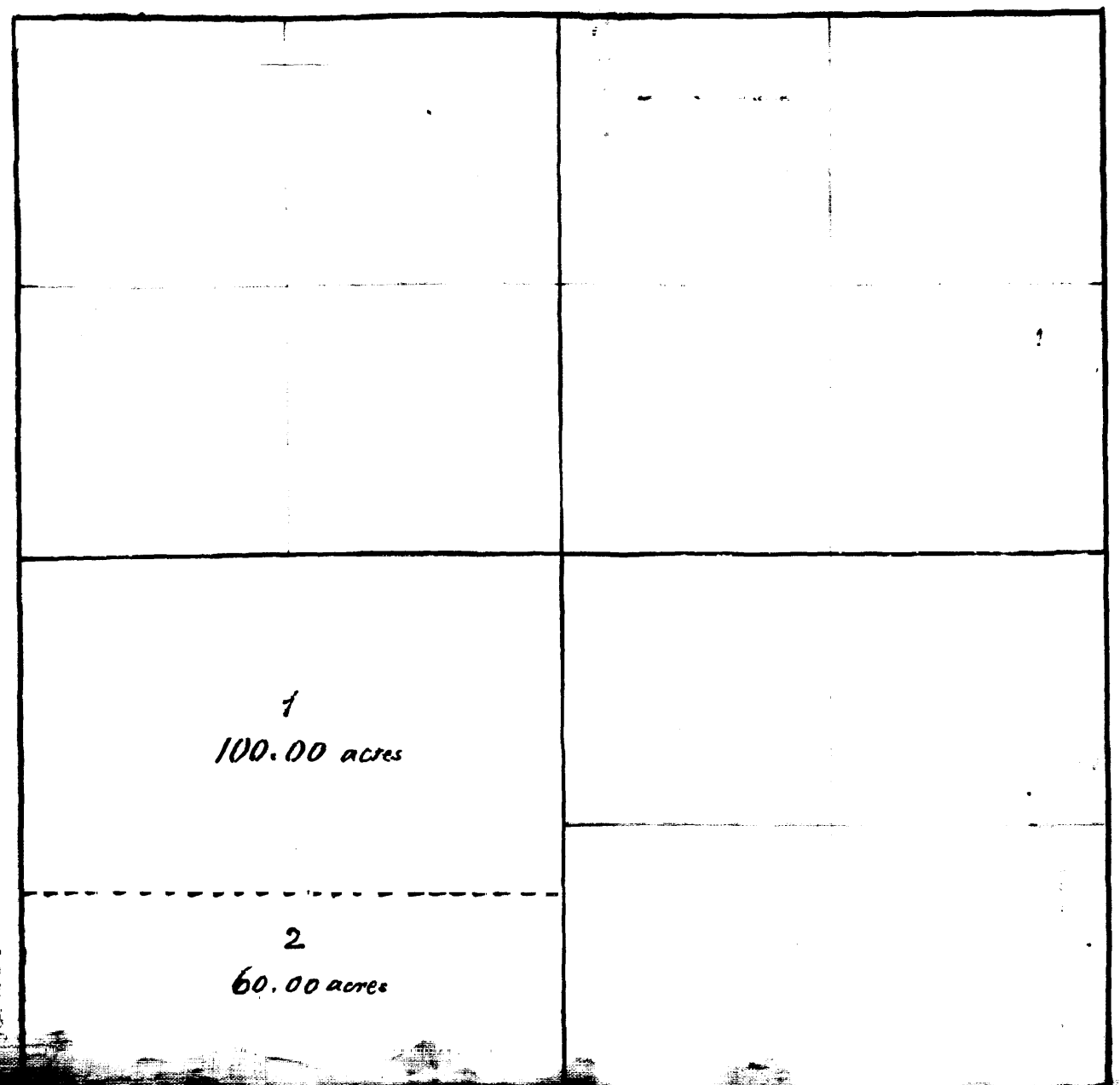


State Land Office
 St. Paul, Minn.
 October 5th 1870.

I hereby certify that the above plats of School sections 36 Town 105 Range 11, 16 Town 105 Range 13, 36 Town 108 Range 13, 16 Town 106 Range 14, and 16 Town 107 Range 15, are correct copies of the originals on file in this office.

Wm. H. Brooks
 Commissioner State Land Office

Sec. 36, T. 105, R. 11.



Office of Register of Deeds,
 Christ Church, Minn. 3
 I hereby certify that this instrument was filed for Record in this office October 11th 1870
 Thomas Brooks
 Register of Deeds

Drawn by J. S. 1870
 Wm. H. Brooks