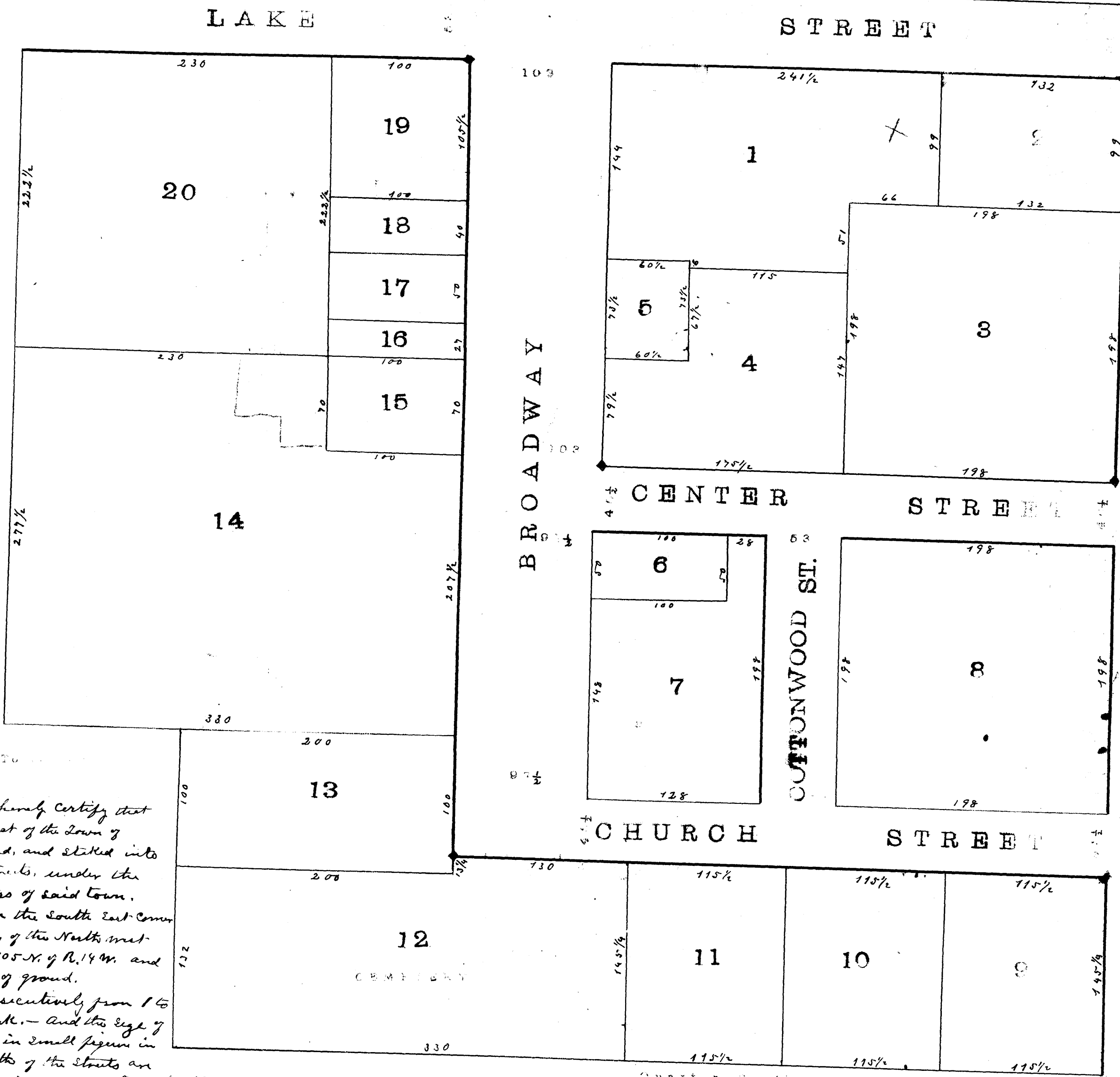
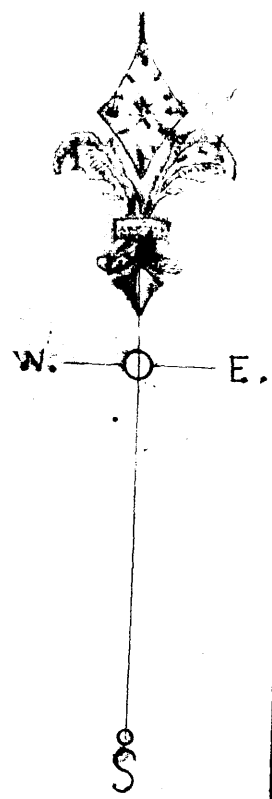


STEWARTVILLE.



SCALE 66 FT TO 1 INCH

Explanation: I hereby certify that the above is a correct Plat of the Town of Stewartville, as surveyed, and staked into lots and blocks and streets, under the direction of the proprietors of said town.

That it is situated in the South East corner of the South East quarter, of the North West quarter of section 34 S. 105 N. of R. 14 W. and contains about 14 1/2 acres of ground.

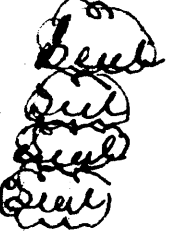
Lots are numbered consecutively from 1 to 20 inclusive in Violet ink. - and the size of the lots, are all marked in small figures in black ink. - The widths of the streets are also marked on the plat in feet. - The position of streets, for future reference and surveys are designated thus: -

The streets and lines running East and West are parallel with the quarter section line on the South side. - and the streets and lines running North & South are parallel with the center of Main Street which is also the quarter section line.

Thomas Hunter
C.E. & Surveyor.

We the undersigned, the proprietors of Stewartville Alameda County, Minnesota, hereby declare, that we caused the same to be surveyed, and laid out into lots, blocks, and streets, and that the above is a correct Plat thereof as set forth in the certificate of the Surveyor and that the streets as shown on said plat, are set apart and dedicated to the public use as such forever.

Rockester Minn. May 28th 1887.
in presence of
Thomas Hunter
H. Smith
Chas. H. Stewart
Florence M. Stewart.
Allen Collins.
J. T. Collins.



State of Minnesota } ss. On this 28th day of May A.D. 1887
County of Alameda }
I, J. T. Collins, a Justice of the Peace in and for said County, do hereby certify that I have personally seen and know the persons named above to be the persons who executed the foregoing instrument and a true and correct copy thereof, and that they executed the same as their free act and deed.

Filed for Record May 29th 1887 at 4 1/2 o'clock P.M.
H. Smith
Register of Deeds
County Auditor
Minneapolis