

WEATHERHILL THIRD SUBDIVISION

SURVEYOR'S CERTIFICATE

I hereby certify that I have surveyed and platted the property described on this plat as WEATHERHILL THIRD SUBDIVISION; that this plat is a correct representation of the survey; that all distances are correctly shown on the plat in feet and hundredths of a foot; that all monuments have been correctly placed in the ground as shown; that the outside boundary lines are correctly designated on the plat; and that there are no wet lands as defined in MS 505.02, Subd. 1, or public highways to be designated other than as shown.

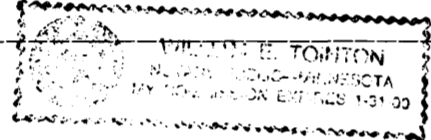
James E. Swanson
James E. Swanson, L.S.
Minnesota License No. 11622

State of Minnesota
County of Olmsted

The surveyor's certificate was subscribed and sworn to before me, a Notary Public, this 16th day of August, 1996.

William E. Tointon
Notary Public, Olmsted County, Minnesota

My commission expires: _____



COUNTY SURVEYOR

I hereby certify that this plat has been checked mathematically and that the plat conforms to the applicable laws, this 16th day of August, 1996.

Edward P. Kinde
Olmsted County Surveyor

TAX STATEMENTS

Taxes due and payable in the year 1996 on the land herein described have been paid, there are no delinquent taxes and transfer has been entered this 27th day of August, 1996.

Bob Ryan
Olmsted County Auditor/Treasurer

By Annigh Bartel Deputy

COUNTY APPROVAL

State of Minnesota
County of Olmsted

I do hereby certify that the accompanying plat was duly approved by the Olmsted County Board of Commissioners at a meeting held on the 27th day of August, 1996. I have signed my name and affixed the seal of said County this 27th day of August, 1996.

Bob Ryan
Olmsted County Auditor

COUNTY RECORDER

734811

Document Number _____

I hereby certify that this instrument was filed in the office of the County Recorder for record on this 27 day of August, 1996, at 5 o'clock P.M., and was duly recorded in the Olmsted County records.

By Mary Callin
County Recorder

Catherine E. Evans
Deputy

PLANNING COMMISSION

We, the members of the Olmsted County Planning Advisory Commission, do hereby certify that we have examined the plat as shown and find that it conforms to the provisions of the Subdivision Ordinance of Olmsted County.

John V. Bous
Commission Chairman

TOWNSHIP BOARD

The Township Board of Supervisors of Rochester Township, Olmsted County, do hereby certify that we have approved the accompanying plat. In testimony thereof, we have signed our names this 21st day of August, 1996.

Brenda Deiken Township Board Chairman Gary Donora Township Board Clerk

ENVIRONMENTAL COMMISSION

The Olmsted County Environmental Commission has approved the plans for water supply and sewage disposal systems for this plat.

Levi Maki R.S.
Olmsted County Environmental Specialist

COUNTY ENGINEER

Approved this 26th day of August, 1996, by Olmsted County Engineer.

Michael Sheehan
Michael Sheehan, County Engineer

INSTRUMENT OF DEDICATION

KNOW ALL MEN BY THESE PRESENTS: That Donald M. Bourquin and Dorothy Suddendorf-Bourquin, husband and wife, owners and proprietors of the following described property situated in the County of Olmsted, State of Minnesota, to wit:

That part of the Northeast Quarter of Section 7, Township 106 North, Range 14 West, Olmsted County, Minnesota, described as follows:

Commencing at the southeast corner of the Northeast Quarter of said Section 7; thence North 02 degrees 30 minutes 03 seconds West, assumed bearing, along the east line of said Northeast Quarter, 805.62 feet; thence North 73 degrees 35 minutes 33 seconds West, 332.14 feet for the point of beginning; thence North 12 degrees 18 minutes 02 seconds West, 292.10 feet; thence North 09 degrees 34 minutes 27 seconds East, 221.56 feet; thence northwesterly, 242.74 feet along a non-tangential curve, concave southerly, central angle of 15 degrees 22 minutes 05 seconds, radius of 905.00 feet, and the chord of said curve bears North 77 degrees 14 minutes 16 seconds West, 242.02 feet; thence North 02 degrees 30 minutes 03 seconds West, not tangent to said curve, 33.28 feet; thence westerly, 78.72 feet along a non-tangential curve, concave southerly, central angle of 04 degrees 48 minutes 30 seconds, radius of 938.00 feet, and the chord of said curve bears North 87 degrees 35 minutes 39 seconds West, 78.70 feet; thence North 89 degrees 59 minutes 53 seconds West, tangent to the last described curve, 356.86 feet; thence westerly, 65.38 feet along a tangential curve, concave northerly, central angle of 17 degrees 15 minutes 43 seconds, radius of 217.00 feet, and the chord of said curve bears North 81 degrees 22 minutes 02 seconds West, 65.13 feet; thence North 72 degrees 44 minutes 11 seconds West, tangent to the last described curve, 295.55 feet; thence North 01 degree 58 minutes 04 seconds West, 16.41 feet to the southeast corner of the North 30 acres of the Northeast Quarter of said Northeast Quarter; thence South 89 degrees 16 minutes 46 seconds West, along the south line of said North 30 acres, 1328.62 feet to the west line of said Northeast Quarter; thence South 01 degree 25 minutes 46 seconds East, along said west line, 1317.45 feet; thence North 64 degrees 25 minutes 03 seconds East, 1171.87 feet; thence North 12 degrees 11 minutes 07 seconds West, 293.51 feet; thence North 00 degrees 43 minutes 14 seconds West, 471.00 feet; thence North 89 degrees 16 minutes 46 seconds East, 212.41 feet; thence easterly, 68.11 feet along a tangential curve, concave southerly, central angle of 17 degrees 59 minutes 03 seconds, radius of 217.00 feet, and the chord of said curve bears South 81 degrees 43 minutes 42 seconds East, 67.83 feet; thence South 72 degrees 44 minutes 11 seconds East, tangent to the last described curve, 303.92 feet; thence easterly, 85.26 feet along a tangential curve, concave northerly, central angle of 17 degrees 15 minutes 43 seconds, radius of 283.00 feet, and the chord of said curve bears South 81 degrees 22 minutes 02 seconds East, 84.94 feet; thence South 89 degrees 59 minutes 53 seconds East, tangent to the last described curve, 356.86 feet; thence South 06 degrees 23 minutes 31 seconds West, 427.75 feet; thence South 75 degrees 12 minutes 06 seconds East, 402.46 feet to the point of beginning.

Containing 30.79 acres, more or less.

have caused the same to be surveyed and platted as WEATHERHILL THIRD SUBDIVISION and do hereby donate and dedicate to the public for the public use forever the thoroughfare and also dedicate the easements as shown on this plat for drainage and utility purposes only.

In witness whereof said Donald M. Bourquin and Dorothy Suddendorf-Bourquin, husband and wife, have caused these presents to be signed this 19th day of August, 1996.

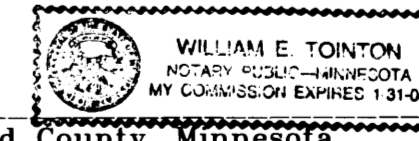
Donald M. Bourquin
Donald M. Bourquin

Dorothy Suddendorf-Bourquin
Dorothy Suddendorf-Bourquin

STATE OF MINNESOTA
COUNTY OF OLMSTED

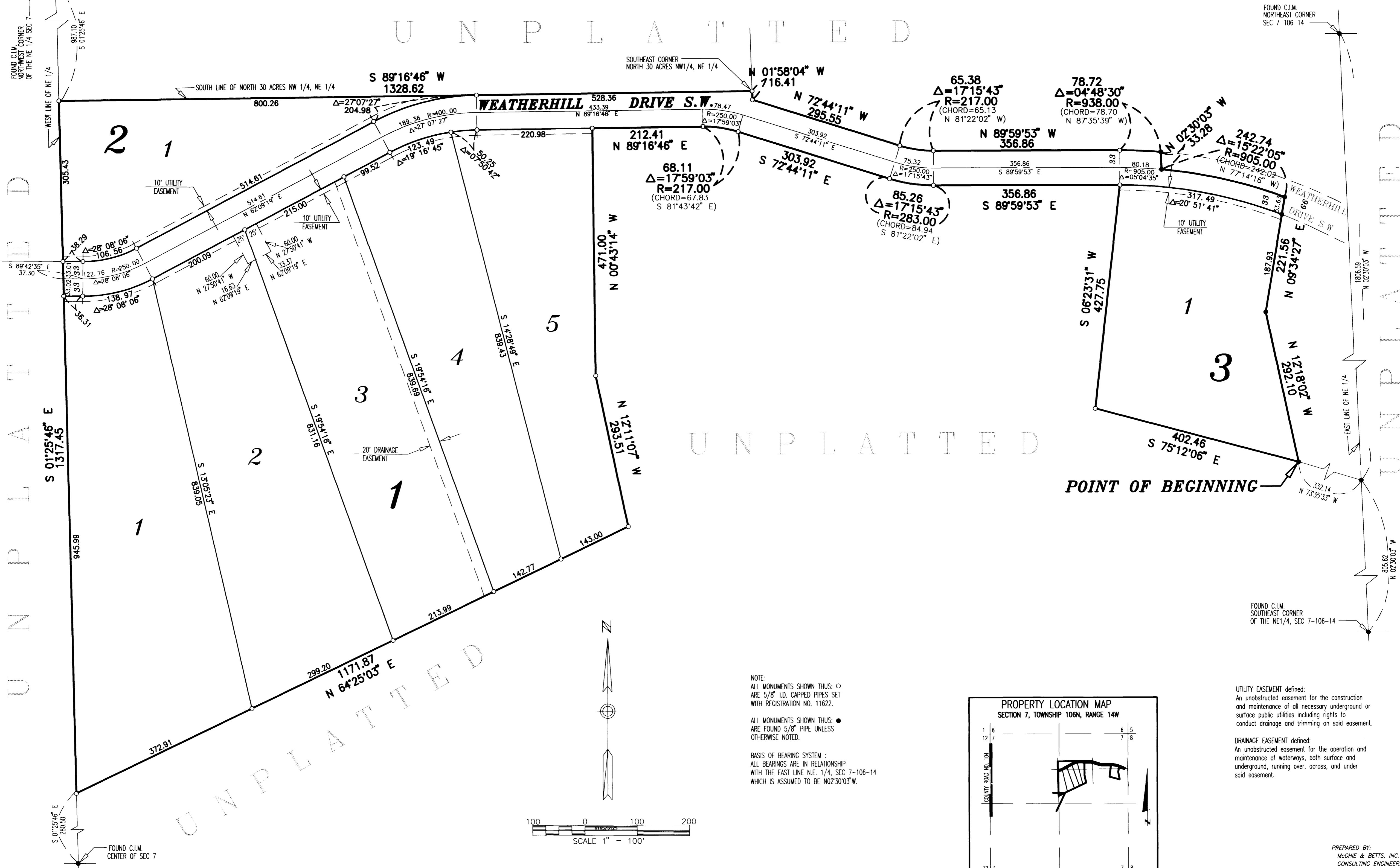
The foregoing instrument was acknowledged before me this 19th day of August, 1996, by Donald M. Bourquin and Dorothy Suddendorf-Bourquin, husband and wife.

William E. Tointon
Notary Public, Olmsted County, Minnesota



WEATHERHILL THIRD SUBDIVISION

UNPLATTED



UNPLATTED

UNPLATTED

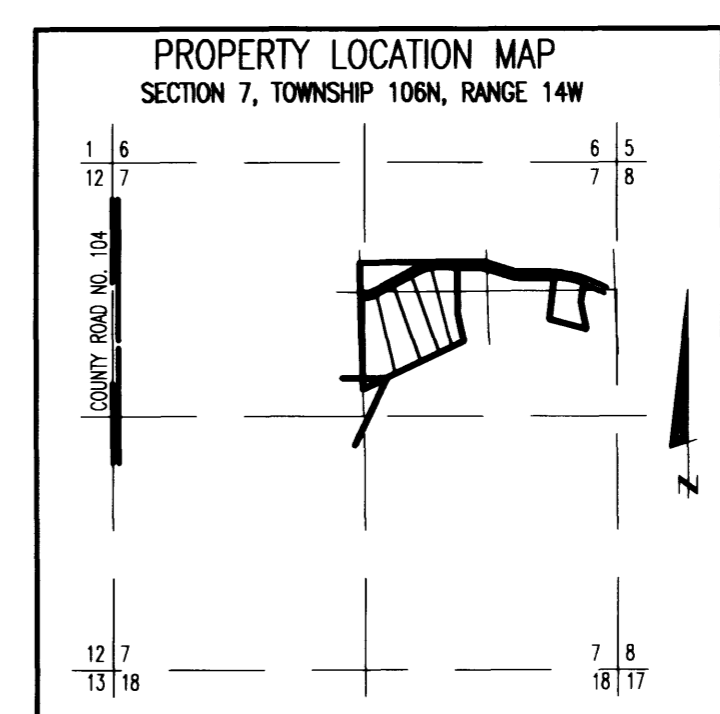
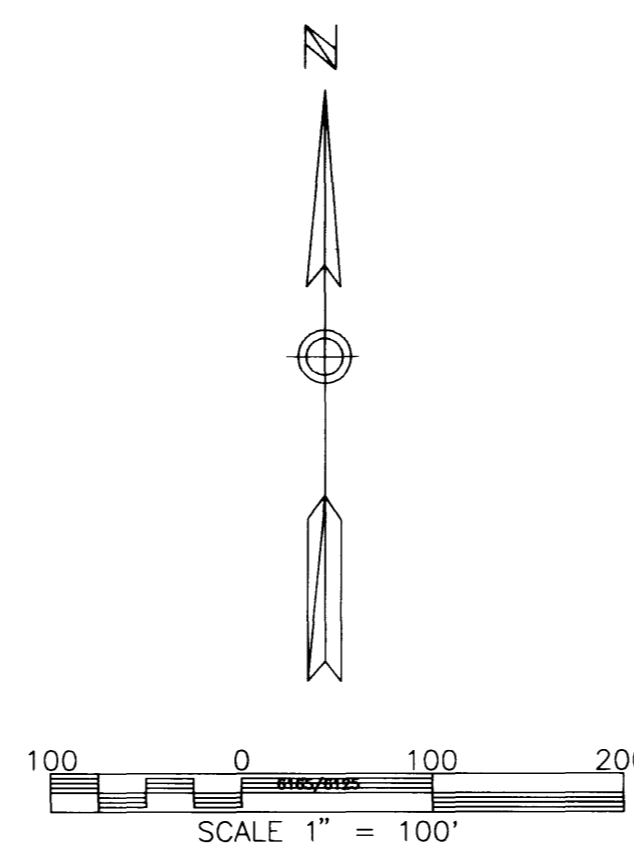
UNPLATTED

UNPLATTED

NOTE:
 ALL MONUMENTS SHOWN THUS: ○
 ARE 5/8" I.D. CAPPED PIPES SET
 WITH REGISTRATION NO. 11622.

ALL MONUMENTS SHOWN THUS: ●
 ARE FOUND 5/8" PIPE UNLESS
 OTHERWISE NOTED.

BASIS OF BEARING SYSTEM:
 ALL BEARINGS ARE IN RELATIONSHIP
 WITH THE EAST LINE N.E. 1/4, SEC 7-106-14
 WHICH IS ASSUMED TO BE N02°30'03"W.



UTILITY EASEMENT defined:
 An unobstructed easement for the construction
 and maintenance of all necessary underground and
 surface public utilities including rights to
 conduct drainage and trimming on said easement.

DRAINAGE EASEMENT defined:
 An unobstructed easement for the operation and
 maintenance of waterways, both surface and
 underground, running over, across, and under
 said easement.

PREPARED BY:
 McGHIE & BETTS, INC.
 CONSULTING ENGINEERS
 PLANNERS, LAND SURVEYORS
 ROCHESTER, MINNESOTA