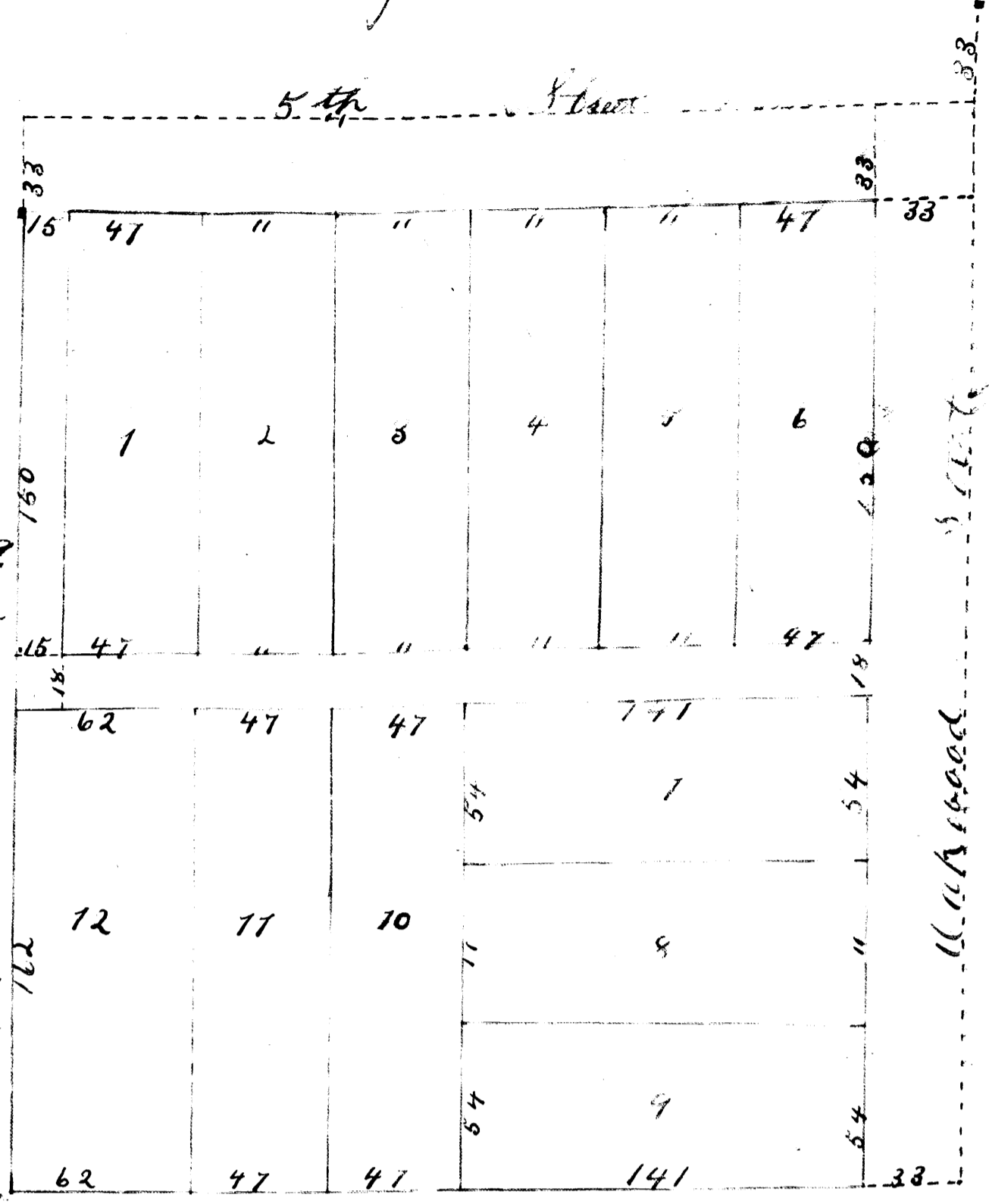


Subdivision of Lot Number 8. of 5th Subdivision of School Section Number 36. Town 107 North of Range 14 West. City of Rochester, Winnetka County, Minnesota

I, John Fraser, County Surveyor, do hereby certify that I have made an examination of Minnie A. Aries' Subdivision of Lot No. 8. 5th Subdivision of School Section number 36, T. 107 N. of R. 14 W. City of Rochester, in compliance with an act of the Legislature of the State of Minnesota and approved March 7th, A. D. 1889, entitled an act to insure the accuracy of town plots.



I further certify that the monument indicated that the boundary lines are correctly shown; that the monuments for the guidance of future survey, are shown in the plot as correctly placed. That the size of the fractional lot here set shown in the plot, measurement given in feet.

John Fraser - County Surveyor.

Deviation 7° 35' East.

I hereby certify that at the request of Minnie A. Aries I did on the 21st day of April, 1894, survey No. 8. of 5th Subdivision of School Section Number 36. T. 107 N. of R. 14 W. City of Rochester, Winnetka County, Minnesota, and had the same staked out into lots for the purpose of laying out and establishing an addition to the City of Rochester in the manner indicated on the within plot, a piece of land known as Lot Number 8. of 5th Subdivision of School Section Number 36. T. 107 N. of R. 14 W. City of Rochester, Winnetka County, Minnesota. That the within plot is a true representation of said survey and subdivision, particularly describing and setting forth all the alleged lots in said Addition, giving the width, boundaries and extent of all such lots, and the dimensions of such lots.

I Minnie A. Aries owner of the remainder of said land do hereby certify that I caused a survey to be made of a piece of land described as follows, to wit: Lot Number 8. of 5th Subdivision of School Section Number 36. T. 107 N. of R. 14 W. City of Rochester, Winnetka County, Minnesota, and had the same staked out into lots as an addition to the City of Rochester, Winnetka County, Minnesota, and I hereby dedicate the City for and to public use forever.

Minnie A. Aries.

I have made and placed on the face of the plot thus - Measurement in feet as given on plot. Witness my hand and seal this 18th day of June A. D. 1894.

John A. Fraser

Deputy County Surveyor, for the purposes therein expressed

State of Minnesota } S.S. Before me a Notary Public within and for Winnetka County, Minnesota, personally appeared John A. Fraser, who acknowledged that he executed the foregoing within instrument as his free act and deed as surveyor and known to me to be the person who executed said instrument.

State of Minnesota } S.S. Before me a Notary Public within and for Winnetka County, Minnesota this 22nd day of June A. D. 1894 personally appeared Minnie A. Aries (a widow) to me known to be the person who executed the within foregoing instrument and she acknowledged that she executed the same as her free act and deed

State of Minnesota } S.S. Before me a Notary Public within and for Winnetka County, Rochester, Minnesota, personally appeared Edward Norden City Clerk and I do hereby certify that the foregoing plot was duly approved by the Common Council of the said City of Rochester on this third day of July A. D. 1894. Edward N. Hallen City Clerk

Proved & paid & bearing entered this 16th day of August A. D. 1894.

W. 12024
Register of Deeds,
Winnetka
County, Minnesota
Certify that the within plat was filed for record on the 16th day of August A. D. 1894 at 5 o'clock P. M., and was duly recorded in Book of Deeds on page
C. H. Burbank