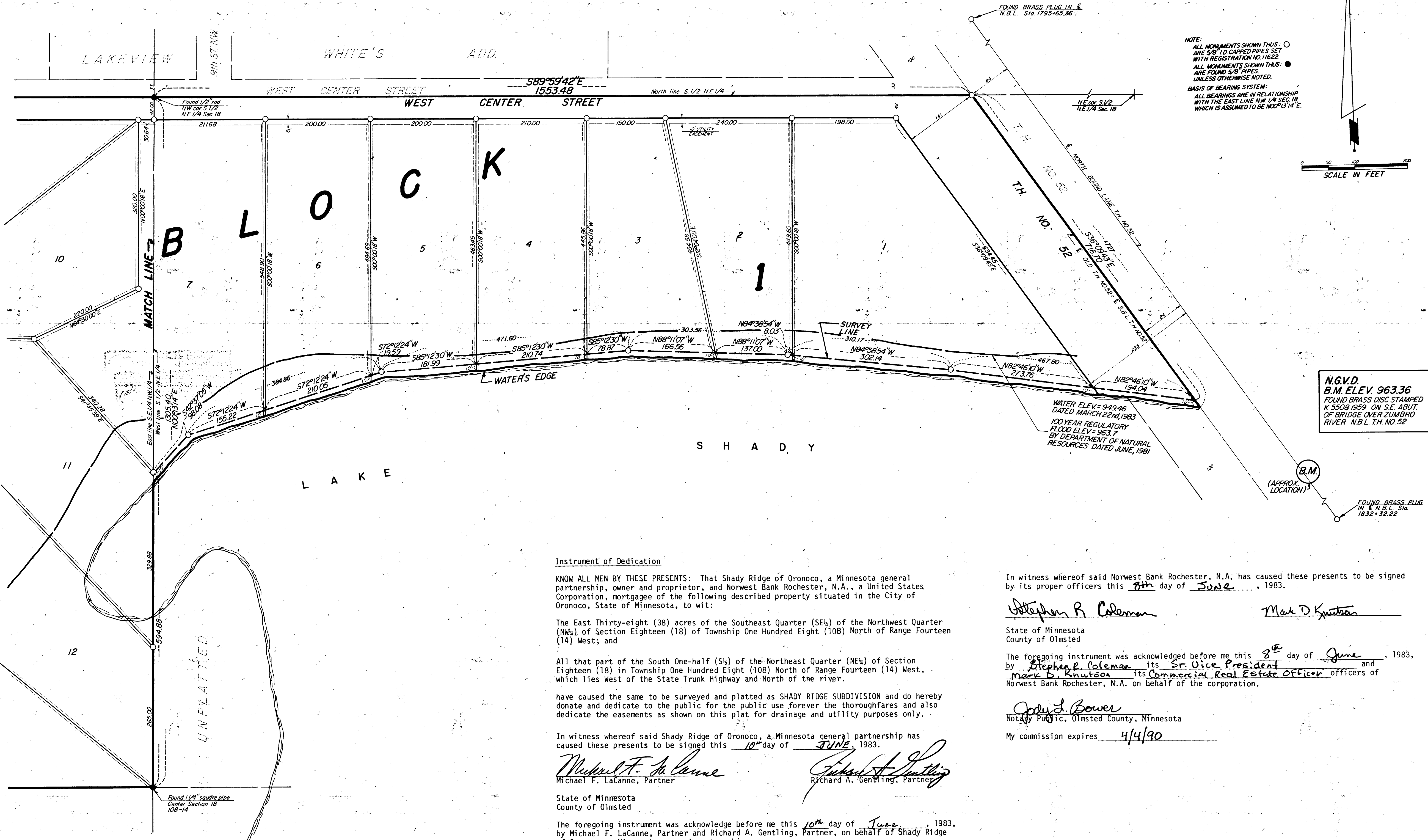


SHADY RIDGE SUBDIVISION



NOTE:
 ALL MONUMENTS SHOWN THUS: ○
 ARE 5/8" I.D. CAPPED PIPES SET
 WITH REGISTRATION NO. 11622.
 ALL MONUMENTS SHOWN THUS: ●
 ARE FOUND 5/8" PIPES
 UNLESS OTHERWISE NOTED.
 BASIS OF BEARING SYSTEM:
 ALL BEARINGS ARE IN RELATIONSHIP
 WITH THE EAST LINE N.W. 1/4 SEC. 18,
 WHICH IS ASSUMED TO BE $N00^{\circ}13'14''E$.

SCALE IN FEET
 0 50 100 200

N.G.V.D.
 B.M. ELEV. 963.36
 FOUND BRASS DISC STAMPED
 K 5508 1959 ON S.E. ABUT.
 OF BRIDGE OVER ZUMBRO
 RIVER N.B.L. T.H. NO. 52

WATER ELEV. = 949.46
 DATED MARCH 22nd, 1983
 100 YEAR REGULATORY
 FLOOD ELEV. = 963.7
 BY DEPARTMENT OF NATURAL
 RESOURCES DATED JUNE, 1981

Instrument of Dedication

KNOW ALL MEN BY THESE PRESENTS: That Shady Ridge of Oronoco, a Minnesota general partnership, owner and proprietor, and Norwest Bank Rochester, N.A., a United States Corporation, mortgagee of the following described property situated in the City of Oronoco, State of Minnesota, to wit:

The East Thirty-eight (38) acres of the Southeast Quarter (SE $\frac{1}{4}$) of the Northwest Quarter (NW $\frac{1}{4}$) of Section Eighteen (18) of Township One Hundred Eight (108) North of Range Fourteen (14) West; and

All that part of the South One-half (S $\frac{1}{2}$) of the Northeast Quarter (NE $\frac{1}{4}$) of Section Eighteen (18) in Township One Hundred Eight (108) North of Range Fourteen (14) West, which lies West of the State Trunk Highway and North of the river.

have caused the same to be surveyed and platted as SHADY RIDGE SUBDIVISION and do hereby donate and dedicate to the public for the public use forever the thoroughfares and also dedicate the easements as shown on this plat for drainage and utility purposes only.

In witness whereof said Shady Ridge of Oronoco, a Minnesota general partnership has caused these presents to be signed this 10th day of JUNE, 1983.

Michael F. LaCanne
 Michael F. LaCanne, Partner
Richard A. Gentling
 Richard A. Gentling, Partner

State of Minnesota
 County of Olmsted

The foregoing instrument was acknowledge before me this 10th day of June, 1983, by Michael F. LaCanne, Partner and Richard A. Gentling, Partner, on behalf of Shady Ridge of Oronoco, a Minnesota general partnership.

Benny Nothman
 Benny Nothman
 Notary Public, Olmsted County, Minnesota

My commission expires March 8, 1990

In witness whereof said Norwest Bank Rochester, N.A. has caused these presents to be signed by its proper officers this 9th day of June, 1983.

Stephen R. Coleman
 Stephen R. Coleman
 State of Minnesota
 County of Olmsted

Mark D. Knutson
 Mark D. Knutson
 The foregoing instrument was acknowledged before me this 8th day of June, 1983,

by *Stephen R. Coleman* its Sr. Vice President and *Mark D. Knutson* its Commercial Real Estate Officer officers of Norwest Bank Rochester, N.A. on behalf of the corporation.

Opdy J. Bower
 Opdy J. Bower
 Notary Public, Olmsted County, Minnesota

My commission expires 4/4/90

NOTE:
 LOT LINE
 TYPICAL UTILITY EASEMENT

OFFICIAL PLAT

PREPARED BY:
 MCGHIE & BETTS, INC.
 CONSULTING ENGINEERS
 LAND SURVEYORS
 ROCHESTER, MINNESOTA

SHADY RIDGE SUBDIVISION

Surveyor's Certificate

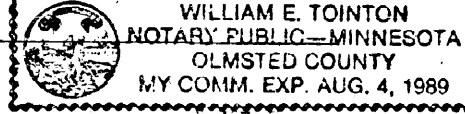
I hereby certify that I have surveyed and platted the property described on this plat as SHADY RIDGE SUBDIVISION; that this is a correct representation of the survey; that all distances are correctly shown on the plat in feet and hundredths of a foot; that all monuments have been correctly placed in the ground as shown; that the outside boundary lines are correctly designated on the plat; and that there are no wet lands or public highways to be designated on said plat other than as shown thereon.

James E. Swanson
James E. Swanson, R.L.S.
Minnesota Registration Number 11622

State of Minnesota
County of Olmsted

The surveyor's certificate was subscribed and sworn to before me, a Notary Public this 7th day of June, 1983.

William E. Tointon
Notary Public, Olmsted County, Minnesota

My commission expires 

I certify that this plat has been checked mathematically and that the plat conforms to the applicable platting laws, this 13th day of June, 1983.

Roger W. Brand
Olmsted County Surveyor

State of Minnesota
County of Olmsted
City of Oronoco

We, Gayle A. Cowden, Mayor, and Ruth H. Glabe, City Clerk, in and for the City of Oronoco, do hereby certify that on the 18th day of May, 1983, the accompanying plat was duly approved by the Common Council of the City of Oronoco. In testimony thereof we have hereunto signed our names and affixed the seal of said City of Oronoco this 10 day of JUNE, 1983.

Gayle A. Cowden
Gayle A. Cowden, Mayor

Ruth H. Glabe
Ruth H. Glabe, Clerk

County Board of Health

The Olmsted County Board of Health has approved this plat for water supply and sewage disposal system except that Lot 1, Block 1, is not approved for sanitary sewage disposal until meeting Olmsted County Board of Health requirements.

Richard A. Peter
Supervisor, Division of Environmental Health
Olmsted County Health Department

Tax Statement

No delinquent taxes due and transfer entered this 27th day of June, 1983.

Rose Branning
County Auditor *Melva Nelson*, Deputy

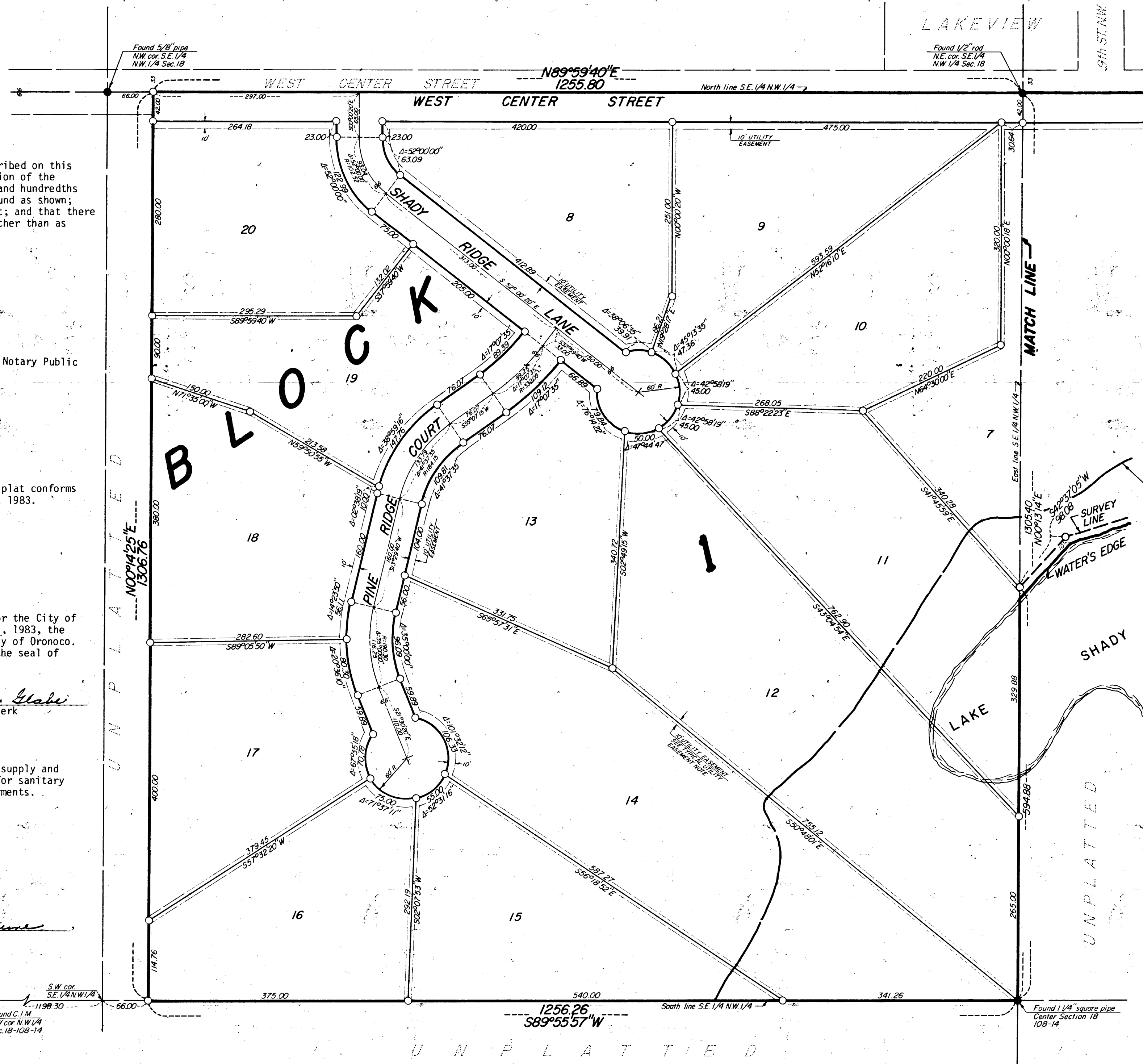
County Recorder

DOCUMENT NUMBER

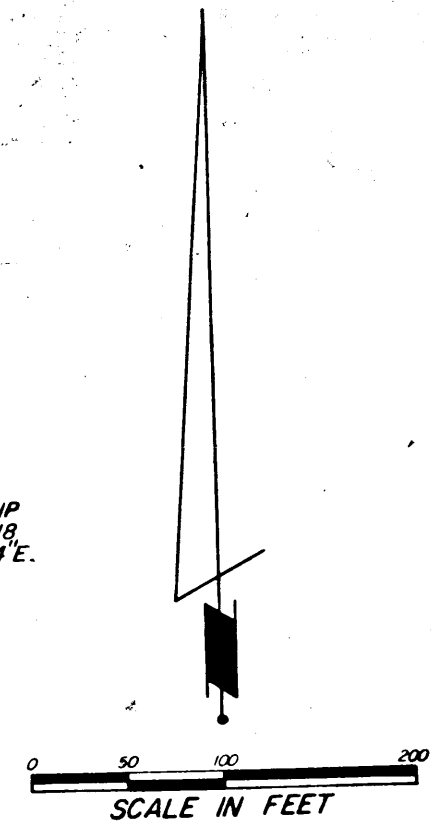
I hereby certify that this instrument was filed in the Office of the County Recorder for record on this 27 day of June, 1983, at 4 o'clock P.M., and was duly recorded in the Olmsted County records.

County Recorder

Deputy



NOTE:
ALL MONUMENTS SHOWN THIS: ○
ARE 5/8" I.D. CAPPED PIPES SET
WITH REGISTRATION NO. 11622.
ALL MONUMENTS SHOWN THIS: ●
ARE FOUND 5/8" PIPES
UNLESS OTHERWISE NOTED.
BASIS OF BEARING SYSTEM:
ALL BEARINGS ARE IN RELATIONSHIP
WITH THE EAST LINE N.W. 1/4 SEC. 18,
WHICH IS ASSUMED TO BE N00°13'14" E.



UNPLATTED

UNPLATTED

Utility Easement Defined:
An unobstructed easement for the construction and maintenance of all necessary overhead, underground, or surface public utilities including rights to conduct drainage and trimming on said easement.

OFFICIAL PLAT

PREPARED BY:
McGHEE & BETTS, INC.
CONSULTING ENGINEERS
LAND SURVEYORS
ROCHESTER, MINNESOTA