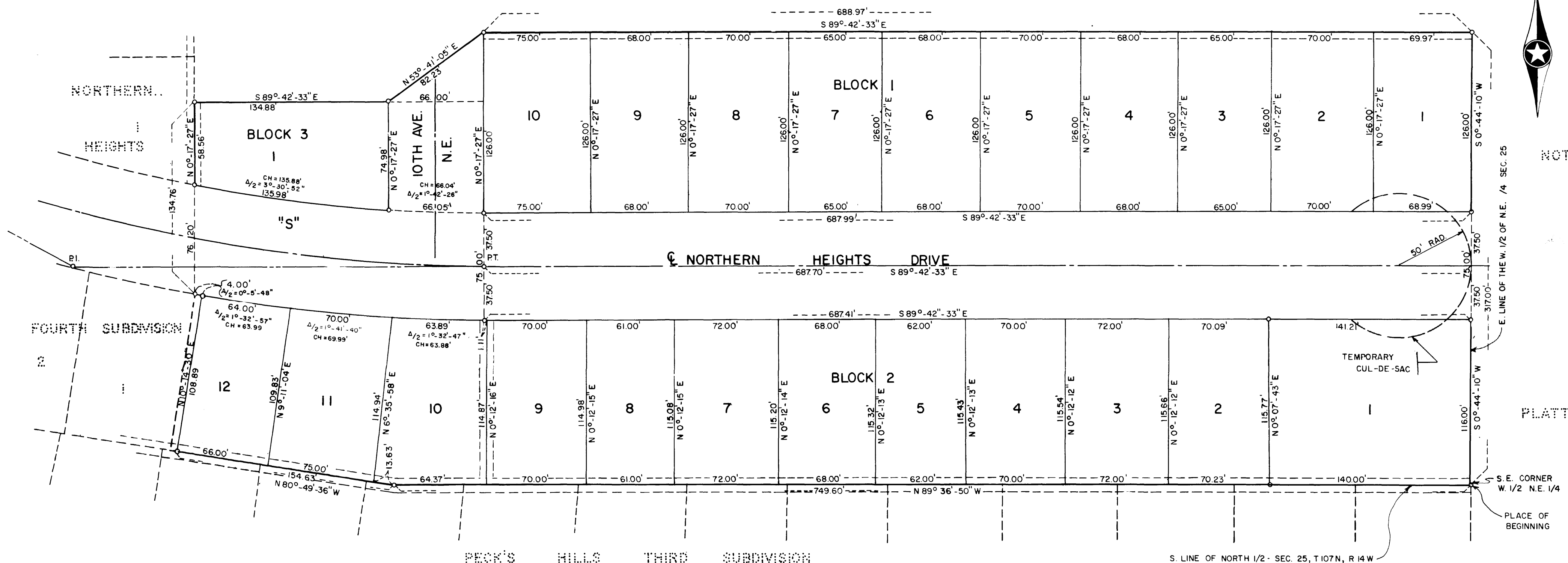


NORTHERN HEIGHTS SIXTH SUBDIVISION

ORIGINAL

ACKNOWLEDGEMENT

NOT PLATTED



CURVE	HORIZONTAL CURVE DATA		
	Δ	D	DISTANCES IN FEET
S	28°-17'-30"	5°	1145.92 288.81 565.83

SCALE: 1" = 50'
 ○ DENOTES IRON MONUMENT
 --- DENOTES 5' UTILITY EASEMENT

SURVEYOR'S CERTIFICATE

I LEONARD M. SANKSTONE, REGISTERED LAND SURVEYOR, DO HEREBY CERTIFY THAT AT THE REQUEST OF ROCHESTER NORTHERN HEIGHTS, INC., A MINNESOTA CORPORATION, I HAVE SURVEYED AND PLATTED INTO LOTS, BLOCKS, DRIVE, AVENUE AND EASEMENTS, AS SHOWN ON THE ACCOMPANYING PLAT ON WHICH THIS CERTIFICATE IS WRITTEN, THE FOLLOWING DESCRIBED TRACT:

THAT PART OF THE S.W. 1/4 OF THE N.E. 1/4 OF SECTION 25, TOWNSHIP 107 NORTH, RANGE 14 WEST, OLMDSTED COUNTY, MINNESOTA, DESCRIBED AS FOLLOWS: BEGINNING AT THE S.E. CORNER OF THE WEST 1/2 OF THE N.E. 1/4 OF SAID SECTION; THENCE ON AN ASSUMED BEARING OF N89°36'50"W ALONG THE SOUTH LINE OF THE NORTH 1/2 OF SAID SECTION A DISTANCE OF 749.60 FEET; THENCE N80°49'36"W A DISTANCE OF 154.63 FEET; THENCE N10°14'30"E A DISTANCE OF 108.89 FEET; THENCE WESTERLY AND NORTHERLY ALONG A CURVE TO THE RIGHT, SAID CURVE BEING THE SOUTHERLY RIGHT OF WAY LINE OF NORTHERN HEIGHTS DRIVE, (RADIUS = 1183.42) A DISTANCE OF 4.00 FEET; THENCE N0°17'27"E A DISTANCE OF 134.76 FEET; THENCE S89°42'33"E A DISTANCE OF 134.88 FEET; THENCE N53°41'05"E A DISTANCE OF 82.23 FEET; THENCE S89°42'33"E A DISTANCE OF 688.97 FEET; THENCE S0°44'10"W A DISTANCE OF 317.00 FEET TO THE POINT OF BEGINNING.

AND I FURTHER CERTIFY THAT SAID PLAT IS A TRUE AND CORRECT RECORD OF THE SURVEY AND THAT ALL DISTANCES ARE CORRECTLY SHOWN IN FEET AND DECIMALS OF FEET, THAT MONUMENTS (IRON PINS) FOR THE GUIDANCE OF FUTURE SURVEYS HAVE BEEN PLACED ON THE GROUND AS SHOWN THUS (○), THAT THE OUTSIDE BOUNDARIES ARE CORRECTLY SHOWN ON THE PLAT, THAT THERE ARE NO WET LANDS EXCEPT AS SHOWN AND THAT SAID PLAT HAS NOT BEEN PREVIOUSLY PLATTED.

DATED THIS 21ST DAY OF OCTOBER, 1966 A.D.

Leonard M. Sankstone
 LEONARD M. SANKSTONE REG. #5325

SUBSCRIBED AND SWORN BEFORE ME A NOTARY PUBLIC THIS 21ST DAY OF OCTOBER, 1966 A.D.

MY COMMISSION EXPIRES APRIL 1ST, 1970 A.D.

W. E. ROSENBERG
 W. E. ROSENBERG
 Notary Public, Olmsted County, Minn.
 My Commission Expires April 1, 1970
 NOTARY PUBLIC, OLMDSTED COUNTY, MINNESOTA

DEDICATION

WE, THE UNDERSIGNED, CERTIFY THAT WE ARE THE SOLE INTERESTED PARTIES IN THE TRACT OF LAND DESCRIBED IN THE FOREGOING SURVEYOR'S CERTIFICATE WHICH IS WRITTEN ON THE PLAT ON WHICH THIS INSTRUMENT IS WRITTEN, THAT WE HAVE CAUSED THE SAME TO BE SURVEYED AND PLATTED INTO LOTS, BLOCKS, DRIVE, AVENUE AND EASEMENTS UNDER THE NAME OF NORTHERN HEIGHTS SIXTH SUBDIVISION AS SHOWN BY SAID PLAT AND THAT WE DO HEREBY DEDICATE TO THE PUBLIC FOR THE PUBLIC USE FOREVER THE DRIVE AND AVENUE SHOWN THEREON AND GRANT THE EASEMENTS SHOWN THEREON.

IN THE PRESENCE OF:

ROCHESTER NORTHERN HEIGHTS, INC.
 SIGNED BY:
Dennis J. Pierce
 DENNIS J. PIERCE, PRESIDENT
 ROCHESTER NORTHERN HEIGHTS, INC.
 A MINNESOTA CORPORATION

Lloyd Engelsma
 LLOYD ENGELSMA, SECRETARY
 ROCHESTER NORTHERN HEIGHTS, INC.
 A MINNESOTA CORPORATION

STATE OF MINNESOTA)
 COUNTY OF OLMDSTED) SS.
 CITY OF ROCHESTER)
 I, ELFREDA REITER, CITY CLERK IN AND FOR SAID CITY OF ROCHESTER, DO HEREBY CERTIFY THAT ON THE 7TH DAY OF August, 1967 A.D., THE ACCOMPANYING AND ANNEXED PLAT WAS DULY APPROVED BY THE COMMON COUNCIL OF THE CITY OF ROCHESTER. IN TESTIMONY THEREOF, I HAVE HEREUNTO SIGNED MY NAME AND AFFIXED THE SEAL OF SAID CITY OF ROCHESTER THIS 9TH DAY OF August, 1967 A.D.

Elfreda Reiter
 CITY CLERK OF THE CITY OF ROCHESTER, MINNESOTA

STATE OF MINNESOTA) SS.
 COUNTY OF OLMDSTED)

I HEREBY CERTIFY THAT THIS PLAT WAS FILED IN THIS OFFICE FOR RECORD ON THIS 29TH DAY OF August, 1967 A.D., AT 3:04 O'CLOCK P.M.

Hannu H. Evans
 REGISTER OF DEEDS
 OLMDSTED COUNTY, MINNESOTA
Helen Fuchs Deputy

STATE OF MINNESOTA) SS.
 COUNTY OF OLMDSTED)

ON THIS 10TH DAY OF August, 1967 A.D., BEFORE ME, A NOTARY PUBLIC IN AND FOR SAID COUNTY PERSONALLY APPEARED DENNIS J. PIERCE AND LLOYD ENGELSMA TO ME PERSONALLY KNOWN, WHO, BEING EACH BY ME DULY SWORN DID SAY THAT THEY ARE RESPECTIVELY THE PRESIDENT AND SECRETARY OF THE CORPORATION NAME IN THE FOREGOING INSTRUMENT, AND THAT THE SEAL AFFIXED TO SAID INSTRUMENT IS THE CORPORATE SEAL OF SAID CORPORATION, AND THAT SAID INSTRUMENT WAS SIGNED AND SEALED IN BEHALF OF SAID CORPORATION BY AUTHORITY OF ITS BOARD OF DIRECTORS, AND DENNIS J. PIERCE AND LLOYD ENGELSMA ACKNOWLEDGE SAID INSTRUMENT TO BE THE FREE ACT AND DEED OF SAID CORPORATION.

Ray E. Prochaska
 NOTARY PUBLIC, OLMDSTED COUNTY, MINNESOTA

MY COMMISSION EXPIRES December 17, 1971

RAY E. PROCHASKA
 Notary Public, Olmsted County, Minn.
 My Commission Expires December 17, 1971

UTILITY EASEMENT DEFINED:

EASEMENT FOR CONSTRUCTION AND MAINTENANCE OF ALL NECESSARY OVERHEAD, UNDERGROUND OR SURFACE, PUBLIC AND PRIVATE UTILITIES, INCLUDING RIGHTS TO CONDUCT DRAINAGE AND TRIMMING ON SAID EASEMENT.

TAXES PAID AND TRANSFER ENTERED THE 9TH DAY OF August, 1967 A.D.

Paul Brumming
 COUNTY AUDITOR

TAXES FOR THE YEAR 1967 ON LANDS DESCRIBED WITHIN ARE PAID.
Paul Hooper
 COUNTY TREASURER