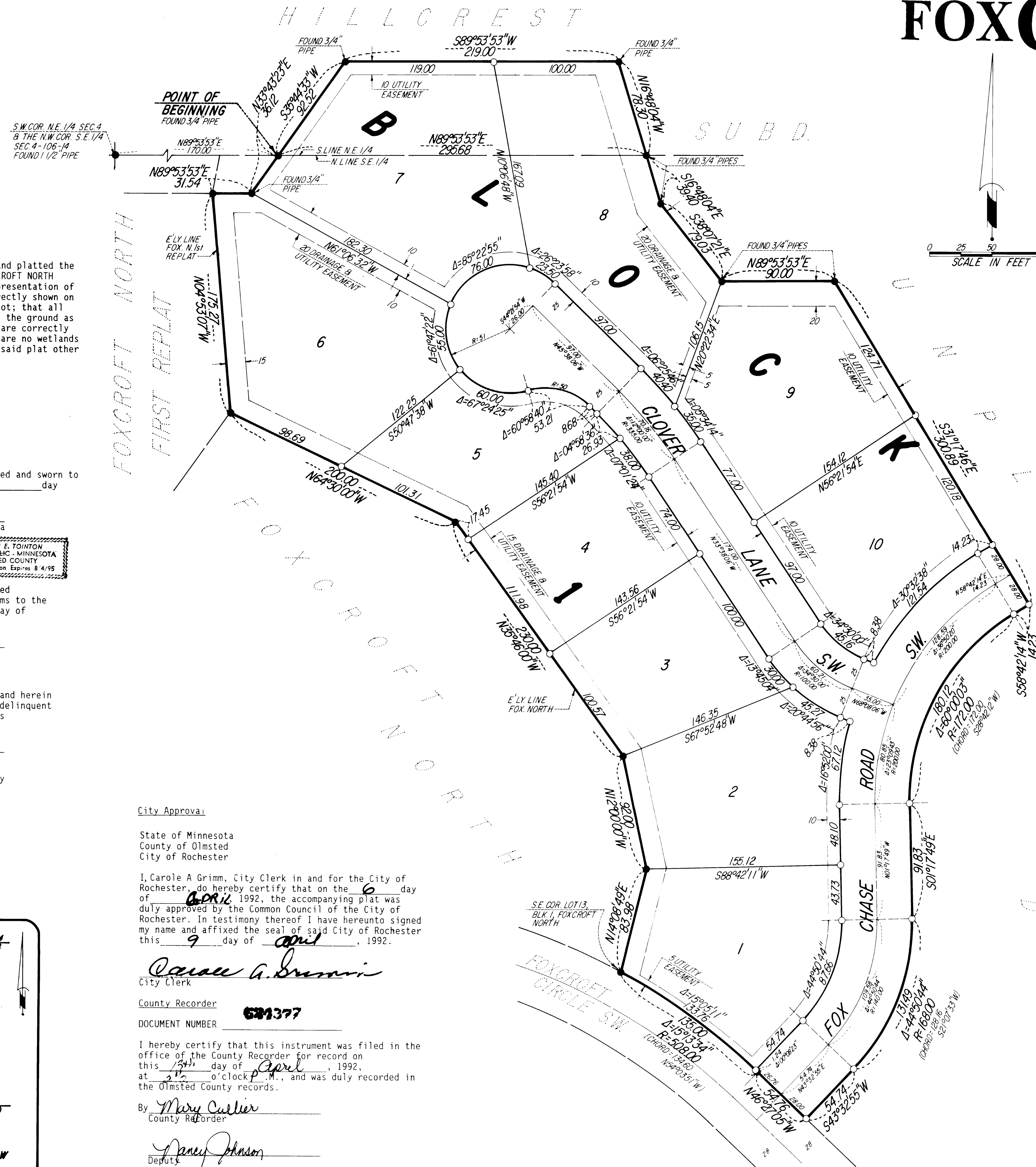
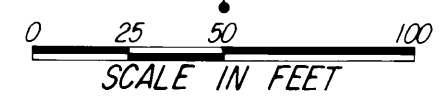


FOXCROFT NORTH SECOND



NOTE:
 ALL MONUMENTS SHOWN THUS: ○ ARE 5/8" I.D. CAPPED PIPES SET WITH REGISTRATION NO. 11622.
 ALL MONUMENTS SHOWN THUS: ● ARE FOUND 5/8" PIPES, UNLESS OTHERWISE NOTED.
 BASIS OF BEARING SYSTEM:
 ALL BEARINGS ARE IN RELATIONSHIP WITH THE NORTH LINE S.E. 1/4 SEC. 4, WHICH IS ASSUMED TO BE N89°53'53\"/>



UTILITY EASEMENT defined:
 An unobstructed easement for the construction and maintenance of all necessary underground or surface public utilities including rights to conduct drainage and trimming on said easement.
 DRAINAGE EASEMENT defined:
 An unobstructed easement for the operation and maintenance of waterways, both surface and underground, running over, across, and under said easement.

Surveyor's Certificate

I hereby certify that I have surveyed and platted the property described on this plat as FOXCROFT NORTH SECOND; that this plat is a correct representation of the survey; that all distances are correctly shown on the plat in feet and hundredths of a foot; that all monuments have been correctly placed in the ground as shown; that the outside boundary lines are correctly designated on the plat; and that there are no wetlands or public highways to be designated on said plat other than shown thereon.

James E. Swanson
 James E. Swanson, R.L.S.
 Minnesota Registration Number 11622

State of Minnesota
 County of Olmsted
 The surveyor's certificate was subscribed and sworn to before me, a Notary Public, this 30th day of March, 1992.

William E. Tointon
 Notary Public, Olmsted County, Minnesota

My commission expires:
 County Surveyor

I certify that this plat has been checked mathematically and that the plat conforms to the applicable laws, this 31st day of March, 1992.

Edward P. Kinsle
 Olmsted County Surveyor

Tax Statements
 Taxes payable in the year 1992 on the land herein described have been paid, there are no delinquent taxes and transfer has been entered this 13th day of April, 1992.

Bob Ryan
 Olmsted County Auditor/Treasurer
 By *Daniel J. Namietke* Deputy

City Approval

State of Minnesota
 County of Olmsted
 City of Rochester
 I, Carole A Grimm, City Clerk in and for the City of Rochester, do hereby certify that on the 6 day of April, 1992, the accompanying plat was duly approved by the Common Council of the City of Rochester. In testimony thereof I have hereunto signed my name and affixed the seal of said City of Rochester this 9 day of April, 1992.

Carole A. Grimm
 City Clerk

County Recorder **621377**
 DOCUMENT NUMBER

I hereby certify that this instrument was filed in the office of the County Recorder for record on this 13th day of April, 1992, at 2:15 o'clock P.M., and was duly recorded in the Olmsted County records.

By *Mary Currier*
 County Recorder
 Deputy *Nancy Johnson*

Instrument of Dedication

KNOW ALL MEN BY THESE PRESENTS: That Foxcroft Corporation, a Minnesota Corporation, owner and proprietor of the following described property situated in the City of Rochester, State of Minnesota, to wit:

That part of the Southwest Quarter of the Northeast Quarter of Section 4, Township 106 North, Range 14 West, and of Hillcrest Addition, according to the plat thereof on file at the County Recorder's Office, Olmsted County, Minnesota, described as follows:

Commencing at the southwest corner of said Northeast Quarter; thence North 89 degrees 53 minutes 53 seconds East, assumed bearing, along the south line of said Northeast Quarter a distance of 170.00 feet for the point of beginning; thence continue North 89 degrees 53 minutes 53 seconds East along said south line, 295.68 feet; thence North 16 degrees 48 minutes 04 seconds West, 78.30 feet; thence South 89 degrees 53 minutes 53 seconds West, 219.00 feet; thence South 35 degrees 44 minutes 33 seconds West, 92.52 feet to the point of beginning.

Also:
 That part of the West Half of the Southeast Quarter of Section 4, Township 106 North, Range 14 West, Olmsted County, Minnesota described as follows:

Commencing at the northwest corner of said Southeast Quarter, thence North 89 degrees 53 minutes 53 seconds East, assumed bearing, along the north line of said Southeast Quarter a distance of 170.00 feet for the point of beginning; thence continue North 89 degrees 53 minutes 53 seconds East along said north line, 295.68 feet; thence South 16 degrees 48 minutes 04 seconds East, 39.40 feet; thence South 38 degrees 07 minutes 21 seconds East, 79.03 feet; thence North 89 degrees 53 minutes 53 seconds East, 90.00 feet; thence South 31 degrees 17 minutes 46 seconds East, 300.89 feet; thence South 58 degrees 42 minutes 14 seconds West, 14.23 feet; thence southwesterly 180.12 feet along a nontangential curve concave southeasterly, central angle of 60 degrees 00 minutes 03 seconds, radius of 172.00 feet, and the chord of said curve bears South 28 degrees 42 minutes 12 seconds West, 172.00 feet; thence South 01 degree 17 minutes 49 seconds East, 91.83 feet; thence southerly 131.49 feet along a tangential curve concave westerly, central angle of 44 degrees 50 minutes 44 seconds, and radius of 168.00 feet; thence South 43 degrees 32 minutes 55 seconds West, 54.74 feet (the next 5 courses are along the easterly boundary of said FOXCROFT NORTH and FOXCROFT NORTH FIRST REPLAT); thence North 46 degrees 27 minutes 05 seconds West, 54.76 feet; thence northwesterly 135.00 feet along a tangential curve concave southwesterly, central angle of 15 degrees 13 minutes 34 seconds and radius of 508.00 feet to the southeast corner of Lot 13, Block 1, FOXCROFT NORTH; thence North 14 degrees 08 minutes 49 seconds East, 83.98 feet; thence North 12 degrees 00 minutes 00 seconds West, 92.00 feet; thence North 35 degrees 46 minutes 00 seconds West, 230.00 feet; thence North 04 degrees 53 minutes 07 seconds West, 175.27 feet; thence North 89 degrees 53 minutes 53 seconds East, 31.54 feet; thence North 33 degrees 43 minutes 23 seconds East, 36.12 feet to the point of beginning.

Containing in all 6.12 acres more or less.
 have caused the same to be surveyed and platted as FOXCROFT NORTH SECOND and do hereby donate and dedicate to the public for the public use forever the thoroughfares and cul-de-sac, and also dedicate the easements as shown on this plat for drainage and utility purposes only.

In witness whereof said Foxcroft Corporation, a Minnesota Corporation, has caused these presents to be signed by its proper officer this 2nd day of April, 1992.

John A. Klopp, Jr.
 John A. Klopp, Jr., President

State of Minnesota
 County of Olmsted

The foregoing instrument was acknowledged before me this 2nd day of April, 1992, by John A. Klopp, Jr., President of Foxcroft Corporation, a Minnesota Corporation, on behalf of the Corporation.

William E. Tointon
 Notary Public, Olmsted County, Minnesota

PREPARED BY:
 McGHEE & BETTS, INC.
 CONSULTING ENGINEERS
 PLANNERS
 LAND SURVEYORS
 ROCHESTER, MINNESOTA

