

GLENDALE THIRD

Surveyor's Certificate

I hereby certify that I have surveyed and platted the property described on this plat as GLENDALE THIRD; that this plat is a correct representation of the survey; that all distances are correctly shown on the plat in feet and hundredths of a foot; that all monuments have been correctly placed in the ground as shown; that the outside boundary lines are correctly designated on the plat; and that there are no wetlands or public highways to be designated on said plat other than shown thereon.

James E. Swanson
James E. Swanson, R.L.S.
Minnesota Registration Number 11622

State of Minnesota
County of Olmsted

The surveyor's certificate was subscribed and sworn to before me, a Notary Public, this 9th day of September, 1992.

William E. Tointon
Notary Public, Olmsted County, Minnesota

My commission expires: 
County Surveyor

I certify that this plat has been checked mathematically and that the plat conforms to the applicable laws, this 9th day of September, 1992.

Edward P. Kusile
Olmsted County Surveyor

Tax Statements

Taxes payable in the year 1992 on the land herein described have been paid, there are no delinquent taxes and transfer has been entered this 20th day of September, 1992.

Bee Ryan
Olmsted County Auditor/Treasurer

By *Paul J. Nemstus* Deputy

City Approval

State of Minnesota
County of Olmsted
City of Rochester

I, Carole A Grimm, City Clerk in and for the City of Rochester, do hereby certify that on the 8 day of Sept., 1992, the accompanying plat was duly approved by the Common Council of the City of Rochester. In testimony thereof I have hereunto signed my name and affixed the seal of said City of Rochester this 9 day of Sept., 1992.

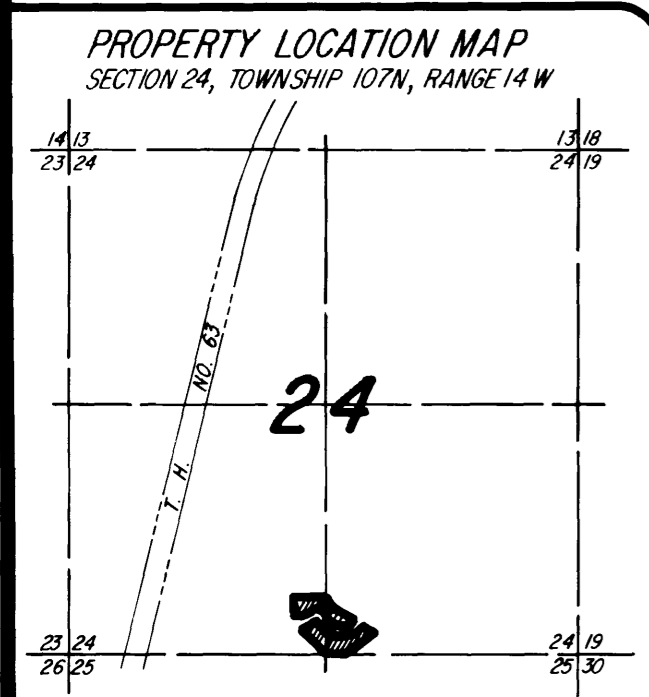
Carole A. Grimm
City Clerk

County Recorder
DOCUMENT NUMBER 637291

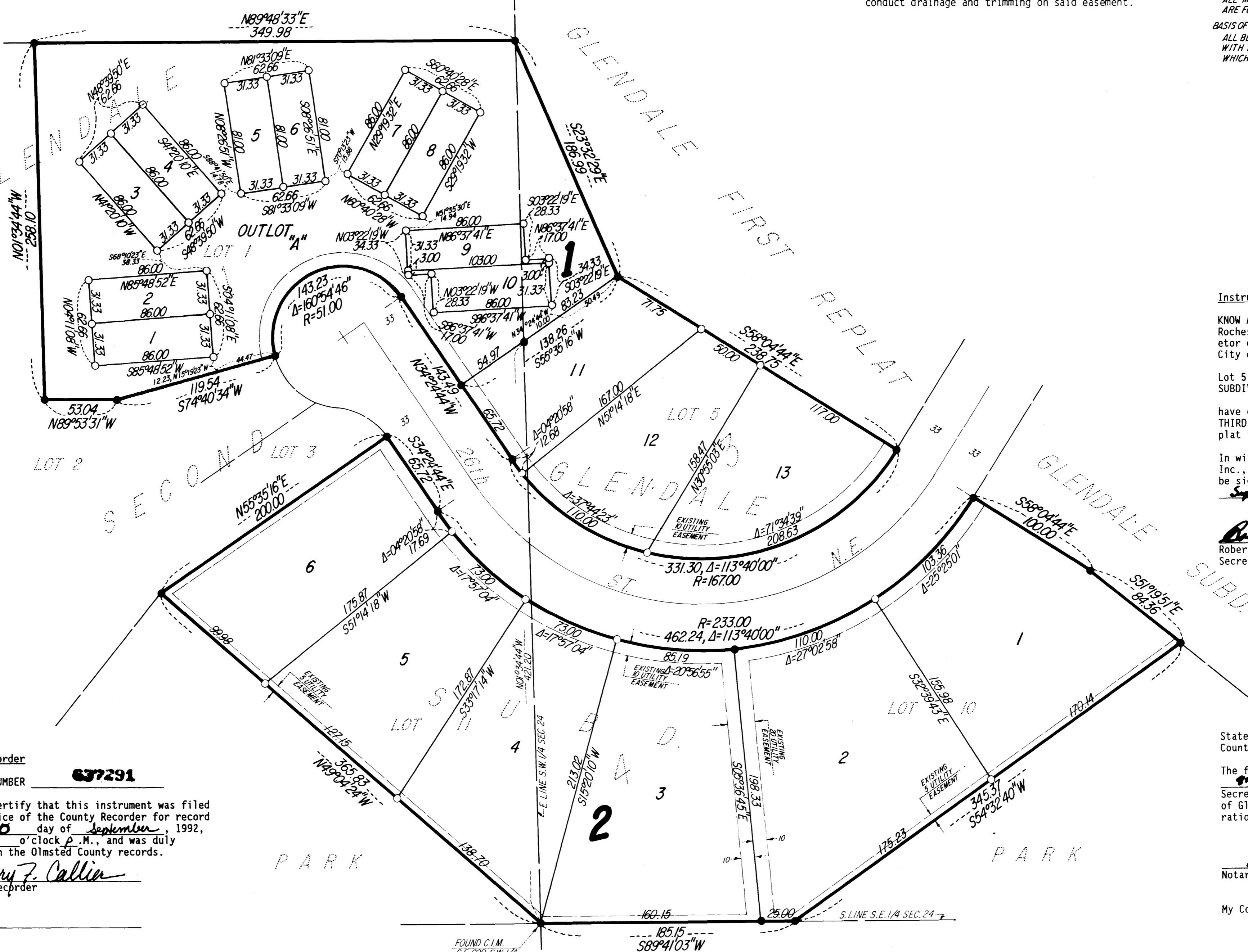
I hereby certify that this instrument was filed in the office of the County Recorder for record on this 30 day of September, 1992, at 5 o'clock P.M., and was duly recorded in the Olmsted County records.

By *Mary F. Callia*
County Recorder

Deputy

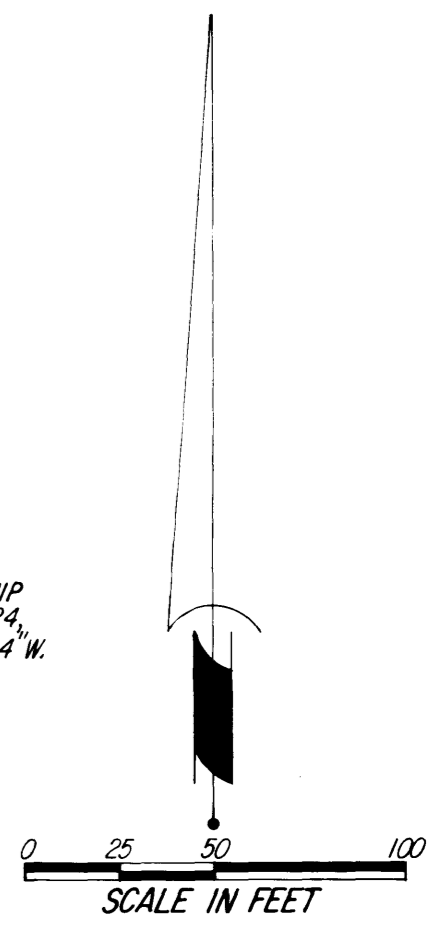


ROCKY CREEK FIRST SUBD.



UTILITY EASEMENT defined:
An unobstructed easement for the construction and maintenance of all necessary underground or surface public utilities including rights to conduct drainage and trimming on said easement.

NOTE:
ALL MONUMENTS SHOWN THUS: ○
ARE 5/8" I.D. CAPPED PIPES SET WITH REGISTRATION NO. 11622.
ALL MONUMENTS SHOWN THUS: ●
ARE FOUND 5/8" PIPES.
BASIS OF BEARING SYSTEMS:
ALL BEARINGS ARE IN RELATIONSHIP WITH THE EAST LINE S.W. 1/4 SEC. 24, WHICH IS ASSUMED TO BE N01°34'44"W.



Instrument of Dedication

KNOW ALL MEN BY THESE PRESENTS: That Glendale Partners of Rochester, Inc., a Minnesota Corporation, owner, and proprietor of the following described property situated in the City of Rochester, State of Minnesota, to wit:

Lot 5, Block 3, and Lots 10 and 11, Block 4, all in GLENDALE SUBDIVISION; also; Lot 1, Block 1, GLENDALE SECOND

have caused the same to be surveyed and platted as GLENDALE THIRD and do hereby dedicate the easements as shown on this plat for drainage and utility purposes only.

In witness whereof said Glendale Partners of Rochester, Inc., a Minnesota Corporation has caused these presents to be signed by its proper officers this 9th day of September, 1992.

Robert G. Gill
Robert G. Gill,
Secretary-Treasurer

R.L. Hexum Sr.
R.L. Hexum Sr.,
President

State of Minnesota
County of Olmsted

The foregoing instrument was acknowledged before me this 9th day of September, 1992, by Robert G. Gill, Secretary-Treasurer, and R.L. Hexum Sr., President, officers of Glendale Partners of Rochester, Inc., a Minnesota Corporation, on behalf of the corporation.

William E. Tointon
Notary Public, Olmsted County, Minnesota

My Commission expires: 

PREPARED BY:
McGHEE & BETTS, INC.
CONSULTING ENGINEERS
PLANNERS
LAND SURVEYORS
ROCHESTER, MINNESOTA