

OFFICIAL PLAT

GLENDALE SECOND

Surveyor's Certificate

I hereby certify that I have surveyed and platted the property described on this plat as GLENDALE SECOND; that this plat is a correct representation of the survey; that all distances are correctly shown on the plat in feet and hundredths of a foot; that all monuments have been correctly placed in the ground as shown; that the outside boundary lines are correctly designated on the plat; and that there are no wetlands or public highways to be designated on said plat other than shown thereon.

James E. Swanson
James E. Swanson, R.L.S.
Minnesota Registration Number 11622

State of Minnesota
County of Olmsted

The surveyor's certificate was subscribed and sworn to before me, a Notary Public, this 18th day of December, 1991.

William E. Tointon
Notary Public, Olmsted County, Minnesota

My commission expires:
WILLIAM E. TOINTON
NOTARY PUBLIC - MINNESOTA
OLMSTED COUNTY
My Commission Expires 8/4/95

County Surveyor

I certify that this plat has been checked mathematically and that the plat conforms to the applicable platting laws, this 17th day of December, 1991.

Edward P. Kinale
Olmsted County Surveyor

Tax Statements

Taxes payable in the year 1991 on the land herein described have been paid, there are no delinquent taxes and transfer has been entered this 27th day of December, 1991.

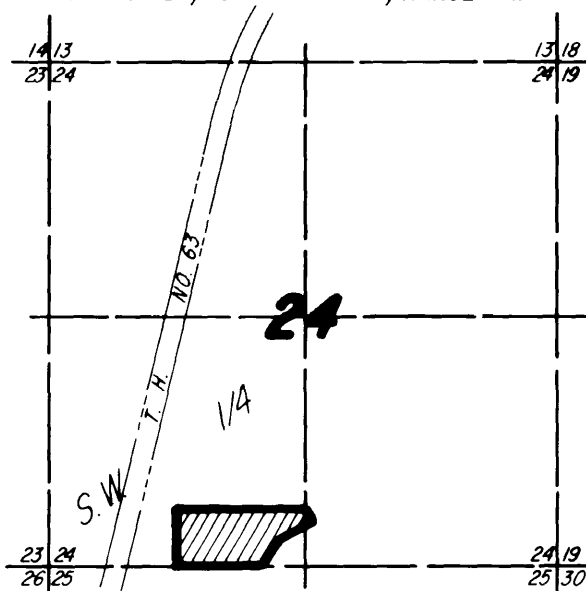
Bar Ryan
Olmsted County Auditor/Treasurer
By Pamela J. Hamister Deputy

City Approval

State of Minnesota
County of Olmsted
City of Rochester
JUDY KAY SCHERR DEPUTY
I, Carole A. Grimm, City Clerk in and for the City of Rochester, do hereby certify that on the 18th day of DEC., 1991, the accompanying plat was duly approved by the Common Council of the City of Rochester. In testimony thereof I have hereunto signed my name and affixed the seal of said City of Rochester this 20th day of DECEMBER, 1991.

Judy Kay Scherr, Deputy
City Clerk

PROPERTY LOCATION MAP



County Recorder 616787

DOCUMENT NUMBER

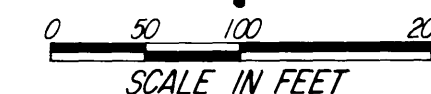
I hereby certify that this instrument was filed in the office of the County Recorder for record on this 27th day of December, 1991, at 11:14 o'clock A.M. and was duly recorded in the Olmsted County records.

By Lewis F. Frutkin
County Recorder
Deputy

DRAINAGE EASEMENT defined:
An unobstructed easement for the operation and maintenance of waterways, both surface and underground, running over, across, and under said easement.

UTILITY EASEMENT defined:
An unobstructed easement for the construction and maintenance of all necessary underground or surface public utilities including rights to conduct drainage and trimming on said easement.

NOTE:
ALL MONUMENTS SHOWN THIS:
ARE 5/8" I.D. CAPPED PIPES SET WITH REGISTRATION NO. 11622.
ALL MONUMENTS SHOWN THIS:
ARE FOUND 5/8" PIPES, UNLESS OTHERWISE NOTED.
BASIS OF BEARING SYSTEM:
ALL BEARINGS ARE IN RELATIONSHIP WITH THE EAST LINE S.W. 1/4 SEC. 24, WHICH IS ASSUMED TO BE N01°34'44" W.



Instrument of Dedication

KNOW ALL MEN BY THESE PRESENTS: That Glendale Partners of Rochester, Inc., a Minnesota Corporation, and Rochester Montessori School, Inc., a Minnesota Corporation, owners and proprietors of the following described property situated in the City of Rochester, State of Minnesota, to wit:

That part of the Southwest Quarter and the Southeast Quarter of Section 24, Township 107 North, Range 14 West, Olmsted County, Minnesota, described as follows:

Commencing at the southeast corner of said Southwest Quarter; thence North 01 degree 34 minutes 44 seconds West, assumed bearing, along the east line thereof, 421.20 feet to the northwesterly line of Lot 5, Block 3, GLENDALE SUBDIVISION, for the point of beginning; thence South 55 degrees 35 minutes 16 seconds West along the northwesterly line of said GLENDALE SUBDIVISION, 320.97 feet to the most westerly corner thereof; thence South 38 degrees 45 minutes 05 seconds West, 306.16 feet to the south line of the Southwest Quarter of said Section 24; thence North 89 degrees 53 minutes 31 seconds West along said south line, 864.82 feet to the southwest corner of the East Half of the Southwest Quarter of said Section 24; thence North 01 degree 33 minutes 00 seconds West, along the west line of said East Half, 632.79 feet to the southwest corner of ROCKY CREEK FIRST SUBDIVISION; thence North 89 degrees 48 minutes 33 seconds East along the south line thereof, 1332.35 feet to the west line of Lot 2, Block 2, GLENDALE FIRST REPLAT; thence South 23 degrees 32 minutes 29 seconds East along the west line of said Block 2, a distance of 186.99 feet to the most northerly corner of Lot 5, Block 3, GLENDALE SUBDIVISION; thence South 55 degrees 35 minutes 16 seconds West along the north line of said Lot 3, a distance of 83.23 feet to the point of beginning.

Containing 17.05 acres more or less.

have caused the same to be surveyed and platted as GLENDALE SECOND and do hereby donate and dedicate to the public for the public use forever the cul de sac and also dedicate the easements as shown on this plat for drainage and utility purposes only.

In witness whereof said Glendale Partners of Rochester, Inc., a Minnesota Corporation have caused these presents to be signed by its proper officers this 23rd day of December, 1991.

Robert G. Gill, Secretary-Treasurer
R.L. Hexum Sr., President

State of Minnesota
County of Olmsted

The foregoing instrument was acknowledged before me this 23rd day of December, 1991, by Robert G. Gill, Secretary-Treasurer, and R.L. Hexum Sr., President, officers of Glendale Partners of Rochester, Inc., a Minnesota Corporation, on behalf of the corporation.

William E. Tointon
Notary Public, Olmsted County, Minnesota

My commission expires:
WILLIAM E. TOINTON
NOTARY PUBLIC - MINNESOTA
OLMSTED COUNTY
My Commission Expires 8/4/95

In witness whereof said Rochester Montessori School, Inc., a Minnesota Corporation, has caused these presents to be signed by its proper officer this 19th day of December, 1991.

Jack E. Thomas, President
Bruce E. Baker, Treasurer

State Of Minnesota
County of Olmsted

The foregoing instrument was acknowledged before me this 19th day of December, 1991, by Jack E. Thomas, President and Bruce E. Baker, Treasurer, of Rochester Montessori School, Inc., a Minnesota Corporation, on behalf of the Corporation.

William E. Tointon
Notary Public, Olmsted County, Minnesota

My commission expires:
WILLIAM E. TOINTON
NOTARY PUBLIC - MINNESOTA
OLMSTED COUNTY
My Commission Expires 8/4/95

PREPARED BY:
MCGHIE & BETTS, INC.
CONSULTING ENGINEERS
PLANNERS
LAND SURVEYORS
ROCHESTER, MINNESOTA