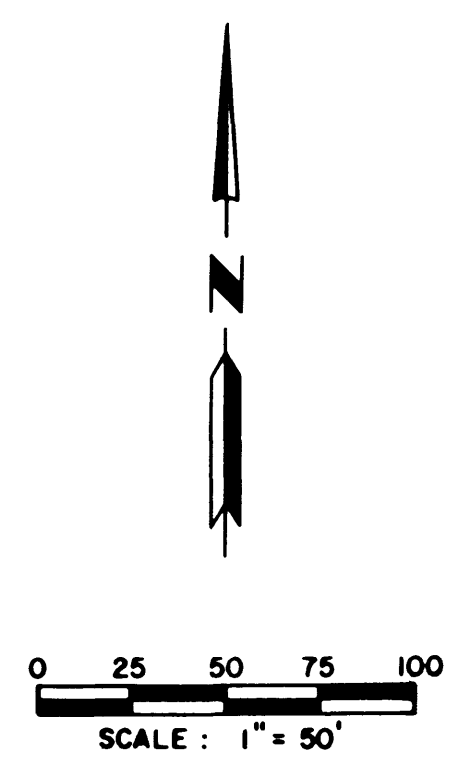
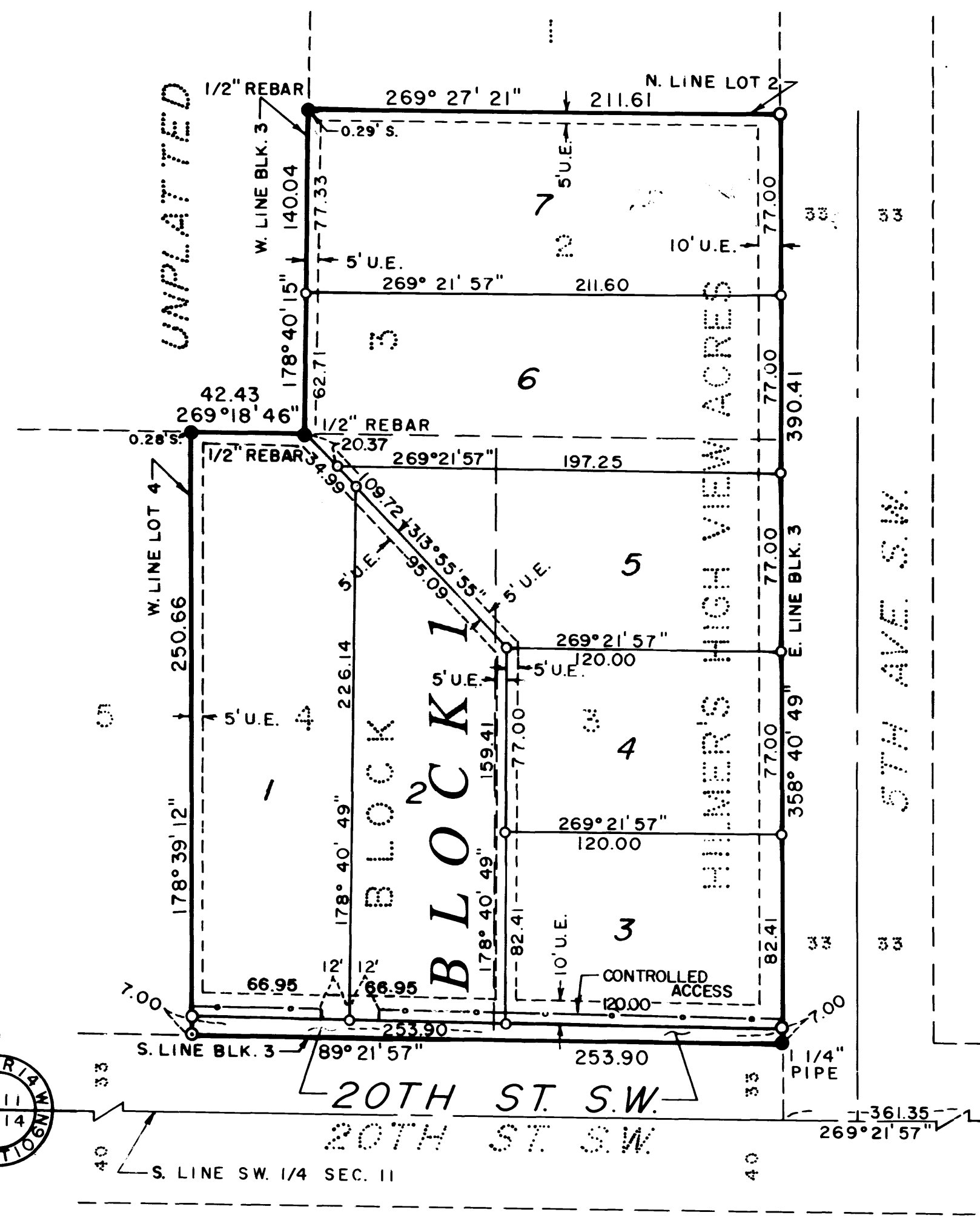
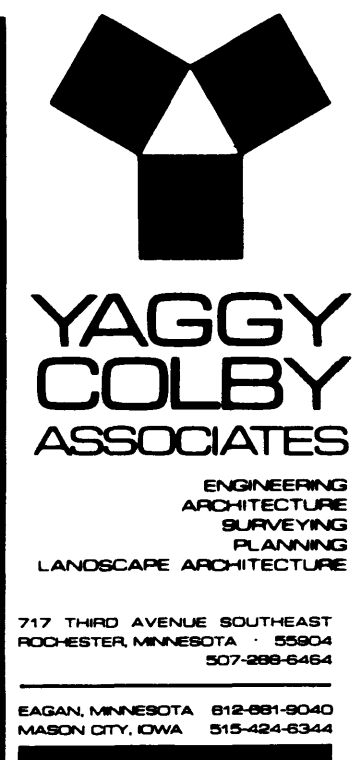


JENSEN'S SECOND SUBDIVISION



MONUMENTS

- 1/2" Rebars
- 3/4" Iron Pipes
- Found Monuments (Pipe, Rod, Etc.)
- ⊙ No Monuments Found or Set

All monuments set have a plastic cap stamped R.L.S. 20703

BEARINGS

Plat bearings are Minnesota State Plane Grid Azimuths measured to the right from Grid North.

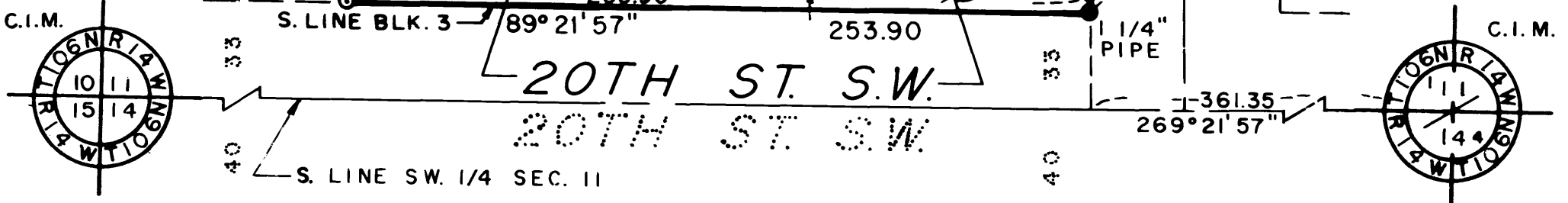
UTILITY EASEMENT DEFINED

An unobstructed easement for the construction and maintenance of all necessary overhead, underground or surface public utilities, including rights to conduct drainage and trimming on said easement.

U.E. = UTILITY EASEMENT

CONTROLLED ACCESS DEFINED

Ingress or egress to, from or across the abutting roadway is restricted by the road authority pursuant to Minnesota State Statute 160.08 or by the Owners of the private easement.



INSTRUMENT OF DEDICATION

KNOW ALL MEN BY THESE PRESENTS: That Arnold J. Jensen and Marilyn B. Jensen, husband and wife, Owners and Proprietors of the following described property, situated in the County of Olmsted, State of Minnesota, to wit:

Lots 2, 3 and 4 of Block 3 in HILMER'S HIGHVIEW ACRES, according to the plat thereof on file in the County Recorder's Office, Olmsted County, Minnesota.

Have caused the same to be surveyed, platted and replatted as JENSEN'S SECOND SUBDIVISION and do hereby donate and dedicate to the public for public use forever the thoroughfares and grant the easements as shown on this plat.

In witness whereof, said Arnold J. Jensen and Marilyn B. Jensen has caused these presents to be signed this 23rd day of May, 1991.

Arnold J. Jensen Marilyn B. Jensen
Arnold J. Jensen Marilyn B. Jensen

STATE OF MINNESOTA
COUNTY OF OLMSTED

The foregoing instrument was acknowledged before me this 23rd day of May, 1991, Arnold J. Jensen and Marilyn B. Jensen.

KATHRYN M. MALLOY
NOTARY PUBLIC - MINNESOTA
OLMSTED COUNTY
My Commission Expires 6/17/91

Kathryn M. Malloy
Notary Public, Olmsted County, MN
My Commission Expires 6/17/91

COUNTY RECORDER **612864**
Document Number _____

I hereby certify that this instrument was filed in the Office of the County Recorder for record on this 16th day of October, 1991, at 2 o'clock p.m. and was duly recorded in Olmsted County Records.

Lois Finstuen
Olmsted County Recorder
by Luann Murray

COUNTY AUDITOR/TREASURER

Taxes payable in the year 1991 on the land herein described have been paid, there are no delinquent taxes and transfer has been entered this 16th day of October, 1991.

Bob Ryan
Olmsted County Auditor/Treasurer
By James J. Nemster Deputy

COUNTY SURVEYOR

I certify that this plat has been checked mathematically and that the plat conforms to the applicable platting laws.

This 15th day of May, 1991.

Edward P. Kniel
Olmsted County Surveyor

STATE OF MINNESOTA
COUNTY OF OLMSTED
CITY OF ROCHESTER

I, Carole A. Grimm, City Clerk, in and for the City of Rochester, do hereby certify that on the 15 day of April, 1991 the accompanying plat was duly approved by the Common Council of the City of Rochester. In testimony whereof, I have hereunto signed my name and affixed the Seal of said City of Rochester this 15 day of October, 1991.

Carole A. Grimm
Carole A. Grimm, City Clerk

SURVEYOR'S CERTIFICATE

I do hereby certify that I have surveyed and platted the property described on this plat as JENSEN'S SECOND SUBDIVISION, that the plat is a correct representation of said survey, that all distances are correctly shown on said plat in feet and hundredths of a foot, that all monuments have been correctly placed in the ground as shown, that the outside boundary lines are correctly designated and that there are no wetlands or public highways to be designated on said plat other than as shown.

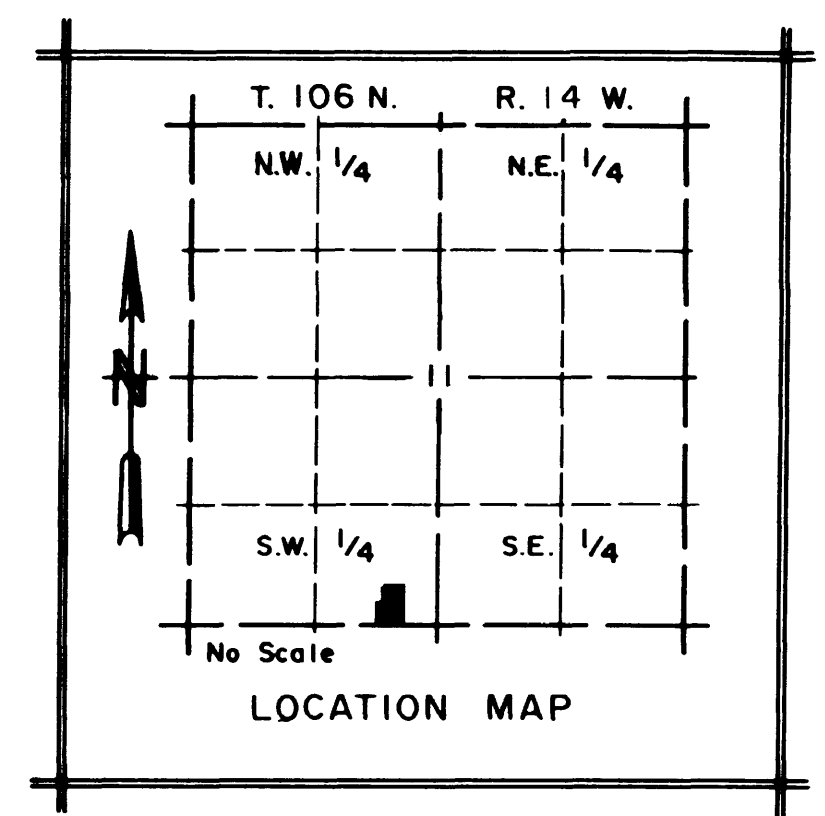
Michael J. Fritz
Michael J. Fritz
Minnesota R.L.S. #20703

STATE OF MINNESOTA
COUNTY OF OLMSTED

The foregoing Surveyor's Certificate was acknowledged before me this 13th day of May, 1991, by Michael J. Fritz, R.L.S. #20703

KATHRYN M. MALLOY
NOTARY PUBLIC - MINNESOTA
OLMSTED COUNTY
My Commission Expires 6/17/91

Kathryn M. Malloy
Notary Public, Olmsted County, MN
My Commission Expires 6/17/91



FINAL PLAT
JENSEN'S SECOND SUBDIVISION
ROCHESTER, MINNESOTA

PROJECT NUMBER 3096
DATE 3-28-91
DRAWN BY D.R.
REVISIONS
SHEET NUMBER
1
OF ONE SHEETS