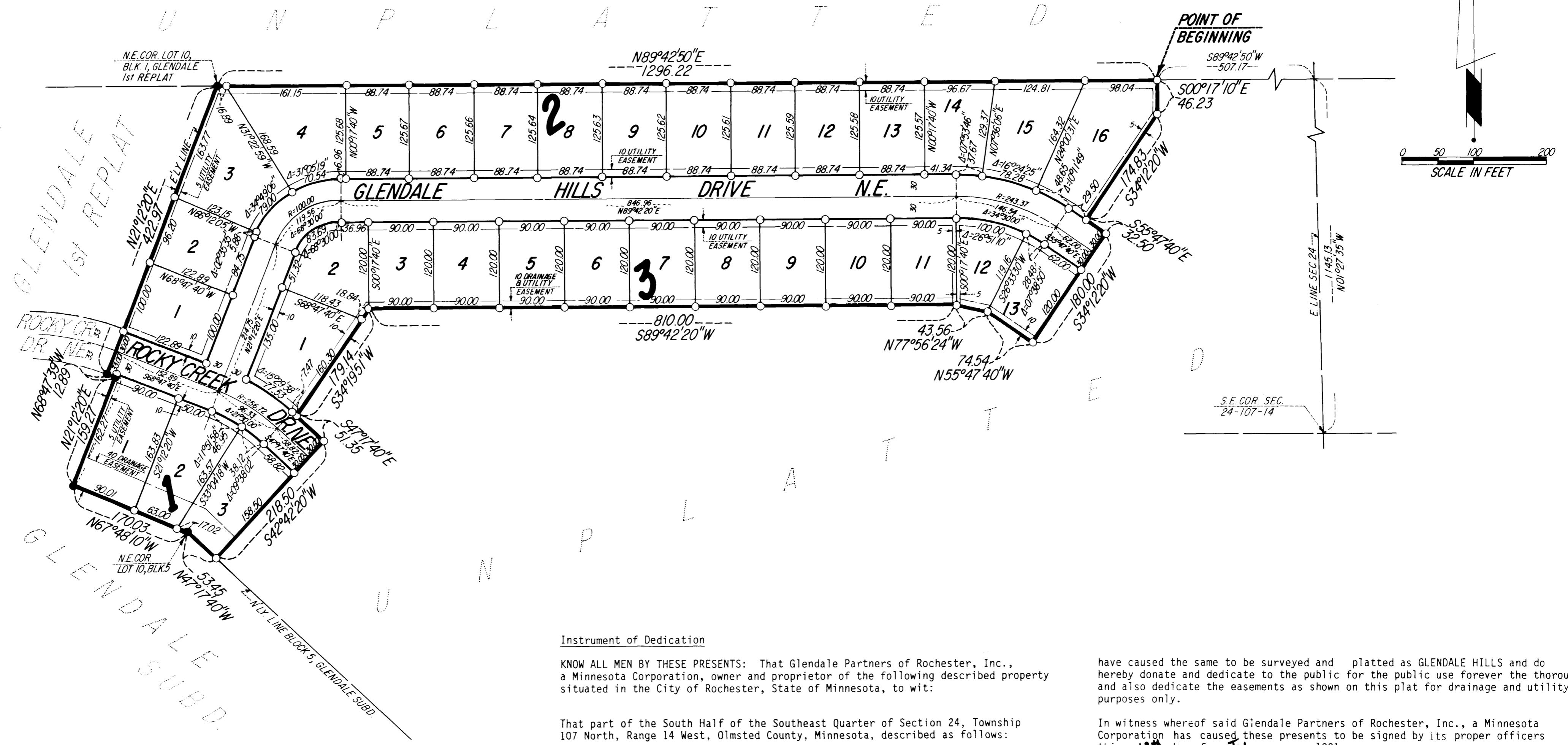


GLENDALE HILLS

NOTE:
 ALL MONUMENTS SHOWN THUS: ○
 ARE 5/8" I.D. CAPPED PIPES SET
 WITH REGISTRATION NO. 11622.
 ALL MONUMENTS SHOWN THUS: ●
 ARE FOUND 5/8" PIPES, UNLESS
 OTHERWISE NOTED.
 BASIS OF BEARING SYSTEM:
 ALL BEARINGS ARE IN RELATIONSHIP
 WITH THE EAST LINE SECTION 24,
 WHICH IS ASSUMED TO BE N01°27'35"W.



Surveyor's Certificate

I hereby certify that I have surveyed and platted the property described on this plat as GLENDALE HILLS; that this plat is a correct representation of the survey; that all distances are correctly shown on the plat in feet and hundredths of a foot; that all monuments have been correctly placed in the ground as shown; that the outside boundary lines are correctly designated on the plat; and that there are no wetlands or public highways to be designated on said plat other than shown thereon.

James E. Swanson
 James E. Swanson, R.L.S.
 Minnesota Registration Number 11622

State of Minnesota
 County of Olmsted

The surveyor's certificate was subscribed and sworn to before me, a Notary public, this 11th day of July, 1991.

William E. Tointon
 Notary Public, Olmsted County, Minnesota

My commission expires 8/4/95
 County Surveyor

I certify that this plat has been checked mathematically and that the plat conforms to the applicable platting laws, this 11th day of July, 1991.

Edward G. Kivell
 Olmsted County Surveyor

Tax Statements

Taxes payable in the year 1991 on the land herein described have been paid, there are no delinquent taxes and transfer has been entered this 5th day of September, 1991.

Bow Ryan
 Olmsted County Auditor/Treasurer
 By Pamela J. Nemister Deputy

City Approval

State of Minnesota
 County of Olmsted
 City of Rochester

I, Carole A. Grimm, City Clerk in and for the City of Rochester, do hereby certify that on the 6 day of MAY, 1991, the accompanying plat was duly approved by the Common Council of the City of Rochester. In testimony thereof I have hereunto signed my name and affixed the seal of said City of Rochester this 4 day of Sept., 1991.

Carole A. Grimm
 City Clerk

County Recorder
 DOCUMENT NUMBER 810113

I hereby certify that this instrument was filed in the office of the County Recorder for record on this 5th day of Sept., 1991, at 8:12 o'clock P.M., and was duly recorded in the Olmsted County records.

By Nancy Johnson
 County Recorder
 Deputy

Instrument of Dedication

KNOW ALL MEN BY THESE PRESENTS: That Glendale Partners of Rochester, Inc., a Minnesota Corporation, owner and proprietor of the following described property situated in the City of Rochester, State of Minnesota, to wit:

That part of the South Half of the Southeast Quarter of Section 24, Township 107 North, Range 14 West, Olmsted County, Minnesota, described as follows:

Commencing at the southeast corner of said Section 24; thence North 01 degree, 27 minutes 35 seconds West, assumed bearing, along the east line thereof, 1145.13 feet; thence South 89 degrees 42 minutes 50 seconds West, 507.17 feet for the point of beginning; thence South 00 degrees 17 minutes 10 seconds East, 46.23 feet; thence South 34 degrees 12 minutes 20 seconds West, 174.83 feet; thence South 55 degrees 47 minutes 40 seconds East, 32.50 feet; thence South 34 degrees 12 minutes 20 seconds West, 180.00 feet; thence North 55 degrees 47 minutes 40 seconds West, 74.54 feet; thence North 77 degrees 56 minutes 24 seconds West, 43.56 feet; thence South 89 degrees 42 minutes 20 seconds West, 810.00 feet; thence South 34 degrees 19 minutes 51 seconds West, 179.14 feet; thence South 47 degrees 17 minutes 40 seconds East, 51.35 feet; thence South 42 degrees 42 minutes 20 seconds West, 218.50 feet to the northerly line of Block 5, GLENDALE SUBDIVISION (the next 5 courses are along the northerly and easterly lines of said GLENDALE SUBDIVISION and of GLENDALE FIRST REPLAT); thence North 47 degrees 17 minutes 40 seconds West, 53.45 feet to the northeast corner of Lot 10 of said Block 5; thence North 67 degrees 48 minutes 10 seconds West, 170.03 feet; thence North 21 degrees 12 minutes 20 seconds East, 159.27 feet; thence North 68 degrees 47 minutes 39 seconds West, 12.89 feet; thence North 21 degrees 12 minutes 20 seconds East, 422.97 feet to the northeast corner of Lot 10, Block 1, GLENDALE FIRST REPLAT; thence North 89 degrees 42 minutes 50 seconds East, 1296.22 feet to the point of beginning.

Containing 11.12 acres more or less.

have caused the same to be surveyed and platted as GLENDALE HILLS and do hereby donate and dedicate to the public for the public use forever the thoroughfares and also dedicate the easements as shown on this plat for drainage and utility purposes only.

In witness whereof said Glendale Partners of Rochester, Inc., a Minnesota Corporation has caused these presents to be signed by its proper officers this 12th day of July, 1991.

Robert G. Gill Secretary-Treasurer
R.L. Hexum Sr. President

State of Minnesota
 County of Olmsted

The foregoing instrument was acknowledged before me this 12th day of July, 1991, by Robert G. Gill, Secretary-Treasurer, and R.L. Hexum Sr. President, officers of Glendale Partners of Rochester, Inc. a Minnesota Corporation, on behalf of the corporation.

William E. Tointon
 Notary Public, Olmsted County, Minnesota

My commission expires 8/4/95

OFFICIAL PLAT

PREPARED BY:
 MCGHIE & BETTS, INC.
 CONSULTING ENGINEERS
 PLANNERS
 LAND SURVEYORS
 ROCHESTER, MINNESOTA

GLENDALE HILLS