

FOXCROFT NORTH FIRST REPLAT

Surveyor's Certificate

I hereby certify that I have surveyed and platted the property described on this plat as FOXCROFT NORTH FIRST REPLAT; that this plat is a correct representation of the survey; that all distances are correctly shown on the plat in feet and hundredths of a foot; that all monuments have been correctly placed in the ground as shown; that the outside boundary lines are correctly designated on the plat; and that there are no wetlands or public highways to be designated on said plat other than shown thereon.

James E. Swanson
James E. Swanson, R.L.S.
Minnesota Registration Number 11622

State of Minnesota
County of Olmsted

The surveyor's certificate was subscribed and sworn to before me, a Notary Public, this 1st day of August, 1991.

William E. Tointon
Notary Public, Olmsted County, Minnesota

My commission expires: 

County Surveyor

I certify that this plat has been checked mathematically and that the plat conforms to the applicable platting laws, this 6th day of August, 1991.

Edward P. Kniall
Olmsted County Surveyor

Tax Statements

Taxes payable in the year 1991 on the land herein described have been paid, there are no delinquent taxes and transfer has been entered this 8th day of August, 1991.

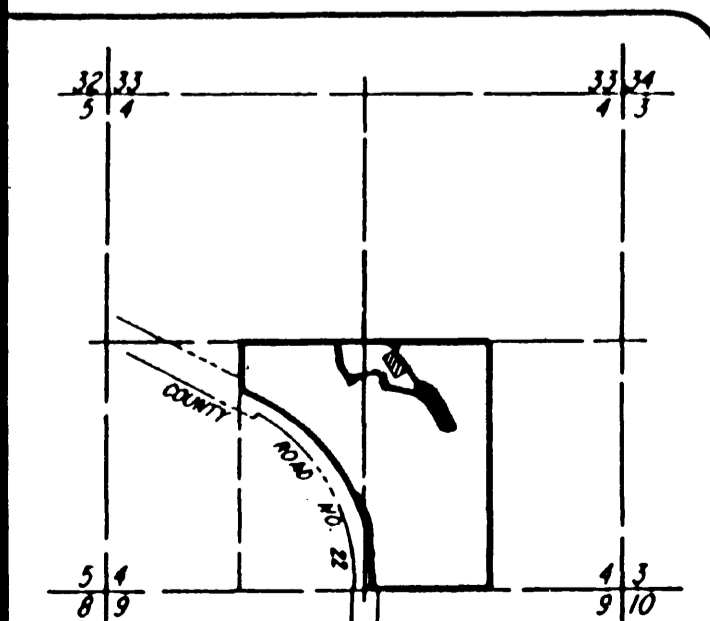
Bob Ryan
Olmsted County Auditor/Treasurer
By *Daniel J. Nemister* Deputy

City Approval

State of Minnesota
County of Olmsted
City of Rochester

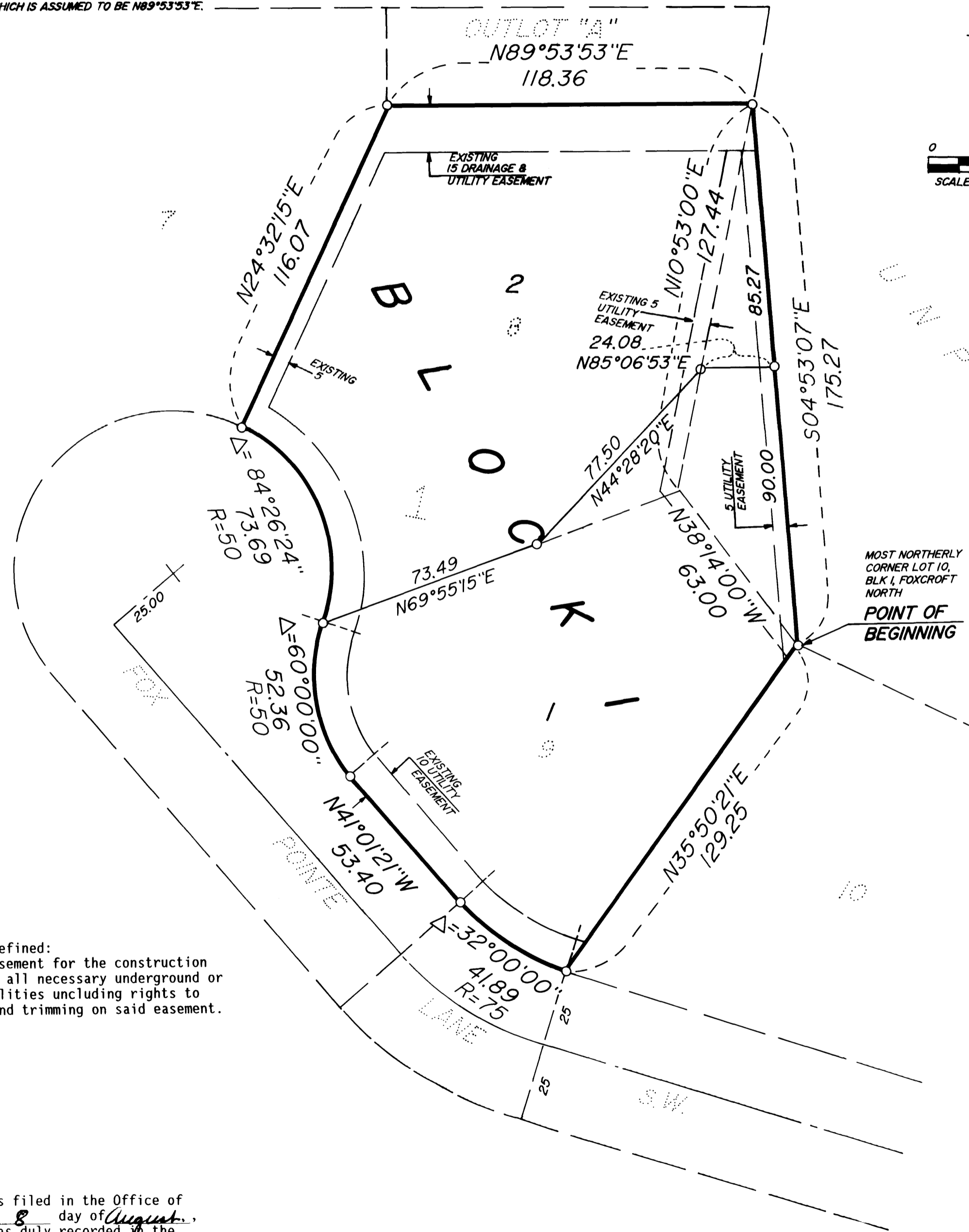
I, Carole A. Grimm, City Clerk in and for the City of Rochester, do hereby certify that on the 5 day of August, 1991, the accompanying plat was duly approved by the Common Council of the City of Rochester. In testimony thereof I have hereunto signed my name and affixed the seal of said City of Rochester this 8 day of August, 1991.

Carole A. Grimm
City Clerk



PROPERTY LOCATION MAP
SECTION 4, TOWNSHIP 106N, RANGE 14W

NOTE:
ALL MONUMENTS SHOWN THUS: ○
ARE 5/8" I.D. CAPPED PIPES SET
WITH REGISTRATION NO. 11622.
ALL MONUMENTS SHOWN THUS: ●
ARE FOUND 5/8" PIPES.
BASIS OF BEARING SYSTEM:
ALL BEARINGS ARE IN RELATIONSHIP
WITH THE NORTH LINE SE 1/4 SEC. 4
WHICH IS ASSUMED TO BE N89°53'53"E.



Instrument of Dedication

KNOW ALL MEN BY THESE PRESENTS: That FoxCroft Corporation, a Minnesota Corporation, owner and proprietor of the following described property situated in the City of Rochester, State of Minnesota, to wit:

Lots 8 and 9, Block 1, FOXCROFT NORTH, Rochester, Minnesota
ALSO:

A part of the West Half of the Southeast Quarter of Section 4, Township 106 North, Range 14 West, Rochester, Minnesota described as follows:

Beginning at the most northerly corner of Lot 10, Block 1, FOXCROFT NORTH; thence North 38 degrees 14 minutes 00 seconds West, assumed bearing, along the easterly line of said FOXCROFT NORTH, 63.00 feet; thence North 10 degrees 53 minutes 00 seconds East, 127.44 feet; thence South 04 degrees 53 minutes 07 seconds East, 175.27 feet to the point of beginning.

has caused the same to be surveyed and platted as FOXCROFT NORTH FIRST REPLAT and do hereby dedicate to the public for the public use forever the easements as shown on this plat for drainage and utility purposes only.

In witness thereof said Foxcroft Corporation has caused these presents to be signed by its proper officer this 2 day of August, 1991.

John Klopp, Jr.
John Klopp, Jr., President

State of Minnesota
County of Olmsted

The foregoing instrument was acknowledged before me this 2nd day of August, 1991, by John A Klopp, Jr., President of Foxcroft Corporation, on behalf of the Corporation.

Barbara M. Stew
Notary Public, Olmsted County, Minnesota
My commission expires 7-18-94

UTILITY EASEMENT defined:
As unobstructed easement for the construction and maintenance of all necessary underground or surface public utilities including rights to conduct drainage and trimming on said easement.

County Recorder
DOCUMENT NUMBER C09063

I hereby certify that this instrument was filed in the Office of the County Recorder for record on this 8 day of August, 1991, at 2:12 o'clock P.M., and was duly recorded in the Olmsted County Records.

David Swanson
County Recorder
Deputy

PREPARED BY:
McGHEE & BETTS, INC.
CONSULTING ENGINEERS
PLANNERS
LAND SURVEYORS
ROCHESTER, MINNESOTA

OFFICIAL PLAT