

OFFICIAL PLAT

DIAMOND RIDGE THREE

Surveyor's Certificate

I hereby certify that I have surveyed and platted the property described on this plat as DIAMOND RIDGE THREE; that this plat is a correct representation of the survey; that all distances are correctly shown on the plat in feet and hundredths of a foot; that all monuments have been correctly placed in the ground as shown; that the outside boundary lines are correctly designated on the plat; and that there are no wetlands or public highways to be designated on said plat other than shown thereon.

James E. Swanson
James E. Swanson, R.L.S.
Minnesota Registration Number 11622

State of Minnesota
County of Olmsted

The surveyor's certificate was subscribed and sworn to before me, a Notary Public, this 4th day of April, 1991.

Lori Swett
Notary Public, Olmsted County, Minnesota

My commission expires

County Surveyor

I certify that this plat has been checked mathematically and that the plat conforms to the applicable plating laws, this 1st day of April, 1991.

Edmond P. Ruess
Olmsted County Surveyor

Tax Statements

Taxes payable in the year 1991 on the land herein described have been paid, there are no delinquent taxes and transfer has been entered this 35th day of April, 1991.

Bob Ryan
Olmsted County Auditor/Treasurer

By Samuel J. Hamustar Deputy

City Approval

State of Minnesota
County of Olmsted
City of Rochester

I, Carole A. Grimm, City Clerk in and for the City of Rochester, do hereby certify that on the 1st day of April, 1991, the accompanying plat was duly approved by the Common Council of the City of Rochester. In testimony thereof I have hereunto signed my name and affixed the seal of said City of Rochester this 22 day of April, 1991.

Carole A. Grimm
City Clerk

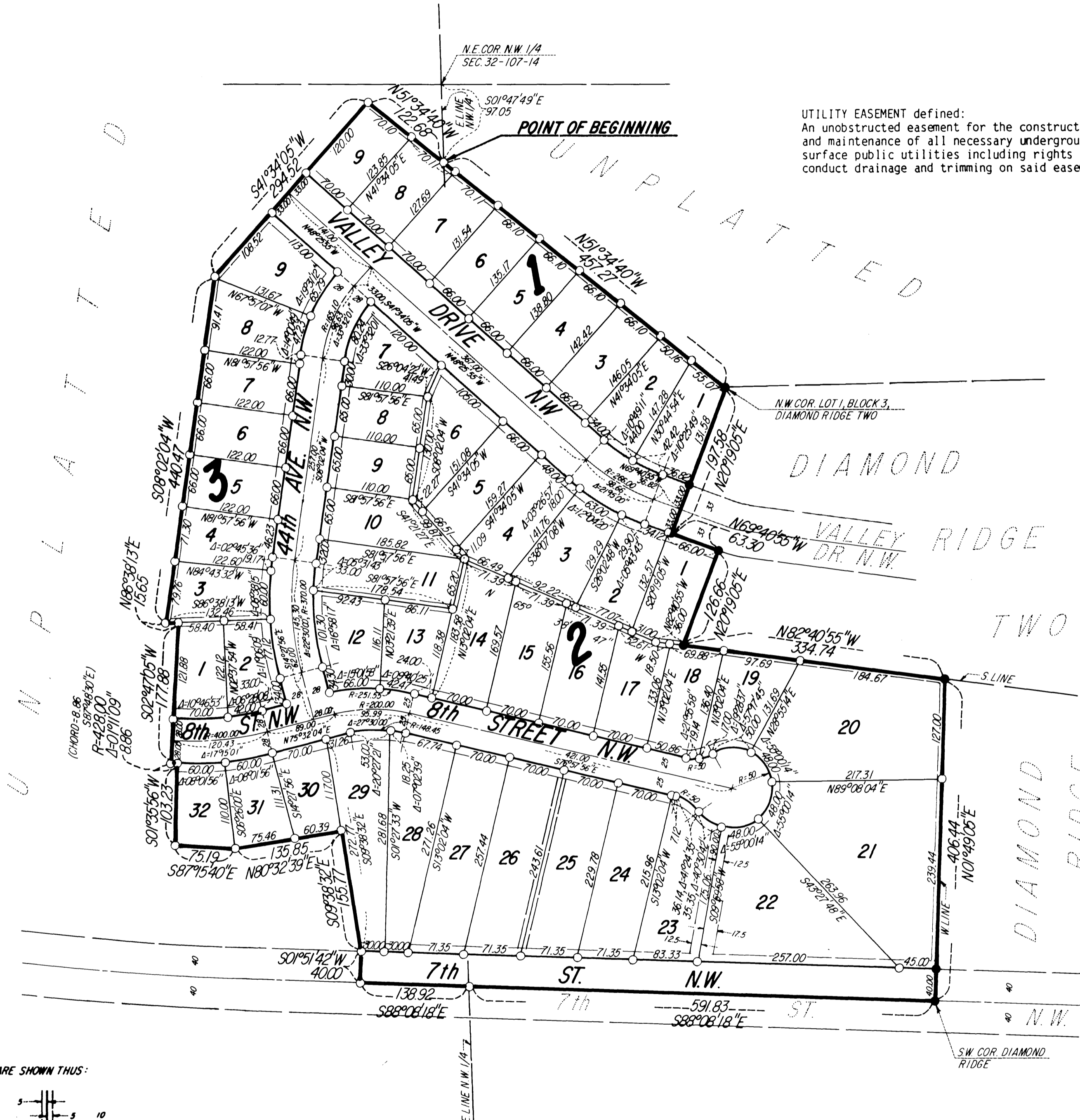
County Recorder

DOCUMENT NUMBER 601033

I hereby certify that this instrument was filed in the office of the County Recorder for record on this 25 day of April, 1991, at 4 o'clock P.M., and was duly recorded in the Olmsted County records.

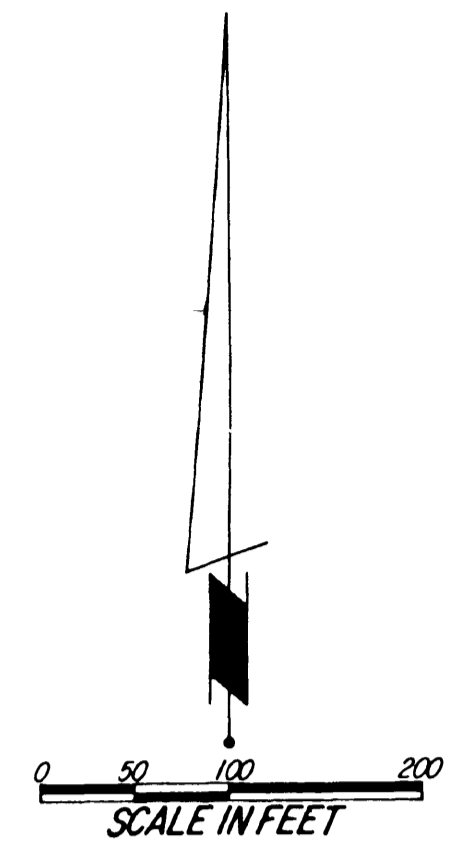
By Catherine E. Egan
County Recorder

Catherine E. Egan
Deputy



UTILITY EASEMENT defined:
An unobstructed easement for the construction and maintenance of all necessary underground or surface public utilities including rights to conduct drainage and trimming on said easement.

NOTE:
ALL MONUMENTS SHOWN THIS: ○
ARE 5/8" I.D. CAPPED PIPES SET
WITH REGISTRATION NO. 11622.
ALL MONUMENTS SHOWN THIS: ●
ARE FOUND 5/8" PIPES.
BASIS OF BEARING SYSTEMS:
ALL BEARINGS ARE IN RELATIONSHIP
WITH THE EAST LINE W. 1/4 SEC. 32,
WHICH IS ASSUMED TO BE S01°47'49" E.



Instrument of Dedication

KNOW ALL MEN BY THESE PRESENTS: That Western Walls, Inc., a Minnesota Corporation, owner and proprietor of the following described property situated in the City of Rochester, State of Minnesota, to wit:

That part of the North Half of Section 32, Township 107 North, Range 14 West, Olmsted County, Minnesota, described as follows:

Commencing at the northeast corner of the Northwest Quarter of said Section 32; thence South 01 degree 47 minutes 49 seconds East, assumed bearing, along the east line of said Northwest Quarter, 97.05 feet for the point of beginning; thence North 51 degrees 34 minutes 40 seconds West, 122.68 feet; thence South 41 degrees 34 minutes 05 seconds West, 294.52 feet; thence South 08 degrees 02 minutes 04 seconds West, 440.47 feet; thence North 86 degrees 38 minutes 13 seconds East, 15.65 feet; thence South 02 degrees 47 minutes 05 seconds West, 177.88 feet; thence South-easterly 8.86 feet along a nontangential curve concave northerly central angle of 01 degree, 11 minutes 09 seconds, radius of 428.00 feet, and the chord of said curve bears South 87 degrees 48 minutes 30 seconds East, 8.86 feet; thence south 01 degree 35 minutes 56 seconds west 103.23 feet; thence south 87 degrees 15 minutes 40 seconds east, 75.19 feet; thence north 80 degrees 32 minutes 39 seconds East, 135.85 feet; thence south 09 degrees 38 minutes 32 seconds east, 155.77 feet; thence south 01 degree 51 minutes 42 seconds west, 40.00 feet; thence south 88 degrees 08 minutes 18 seconds east, 138.92 feet to the east line of said Northwest Quarter; thence continue South 88 degrees 08 minutes 18 seconds East, 591.83 feet to the southwest corner of DIAMOND RIDGE; thence North 01 degree 49 minutes 05 seconds East, along the west line of said DIAMOND RIDGE, 406.44 feet to the south line of DIAMOND RIDGE TWO (the next 4 courses are along the south and west lines of said DIAMOND RIDGE TWO): thence North 82 degrees 40 minutes 55 seconds West, 334.74 feet; thence North 20 degrees 19 minutes 05 seconds East, 126.66 feet; thence North 69 degrees 40 minutes 55 seconds West, 63.30 feet; thence North 20 degrees 19 minutes 05 seconds East, 197.58 feet to the northwest corner of Lot 1, Block 3, DIAMOND RIDGE TWO; thence North 51 degrees 34 minutes 40 seconds West, 457.27 feet to the point of beginning.

Containing 16.55 acres more or less.

have caused the same to be surveyed and platted as DIAMOND RIDGE THREE and do hereby donate and dedicate to the public for the public use forever the thoroughfares and cul-de-sac, and also dedicate the easements as shown on this plat for drainage and utility purposes only.

In witness whereof said Western Walls, Inc., a Minnesota Corporation, has caused these presents to be signed by its proper officer this 4th day of April, 1991.

Robert D. DeWitz
Robert D. DeWitz, President

State of Minnesota
County of Olmsted

The foregoing instrument was acknowledged before me this 4th day of April, 1991, by Robert D. DeWitz, President of Western Walls, Inc., a Minnesota Corporation, on behalf of the Corporation.

Lori Swett
Notary Public, Olmsted County, Minnesota

My commission expires

PREPARED BY:
McGHEE & BETTS, INC.
CONSULTING ENGINEERS
PLANNERS
LAND SURVEYORS
ROCHESTER, MINNESOTA

