

# CIMARRON FOURTEENTH

### Surveyor's Certificate

I hereby certify that I have surveyed and platted the property described on this plat as CIMARRON FOURTEENTH; that this plat is a correct representation of the survey; that all distances are correctly shown on the plat in feet and hundredths of a foot; that all monuments have been correctly placed in the ground as shown; that the outside boundary lines are correctly designated on the plat; and that there are no wetlands or public highways to be designated on said plat other than shown thereon.

*James E. Swanson*  
James E. Swanson, R.L.S.  
Minnesota Registration Number 11622

State of Minnesota  
County of Olmsted

The surveyor's certificate was subscribed and sworn to before me, a Notary Public, this 12<sup>th</sup> day of April, 1991.

*William E. Ginter*  
Notary Public, Olmsted County, Minnesota

My commission expires 8/4/95  
County Surveyor

I certify that this plat has been checked mathematically and that the plat conforms to the applicable plating laws, this 12<sup>th</sup> day of April, 1991.

*Edward P. Kinsale*  
Olmsted County Surveyor

### Tax Statements

Taxes payable in the year 1991 on the land herein described have been paid, there are no delinquent taxes and transfer has been entered this 25<sup>th</sup> day of April, 1991.

*Bob Ryan*  
Olmsted County Auditor/Treasurer  
By *Paul J. Hemmick* Deputy

### City Approval

State of Minnesota  
County of Olmsted  
City of Rochester

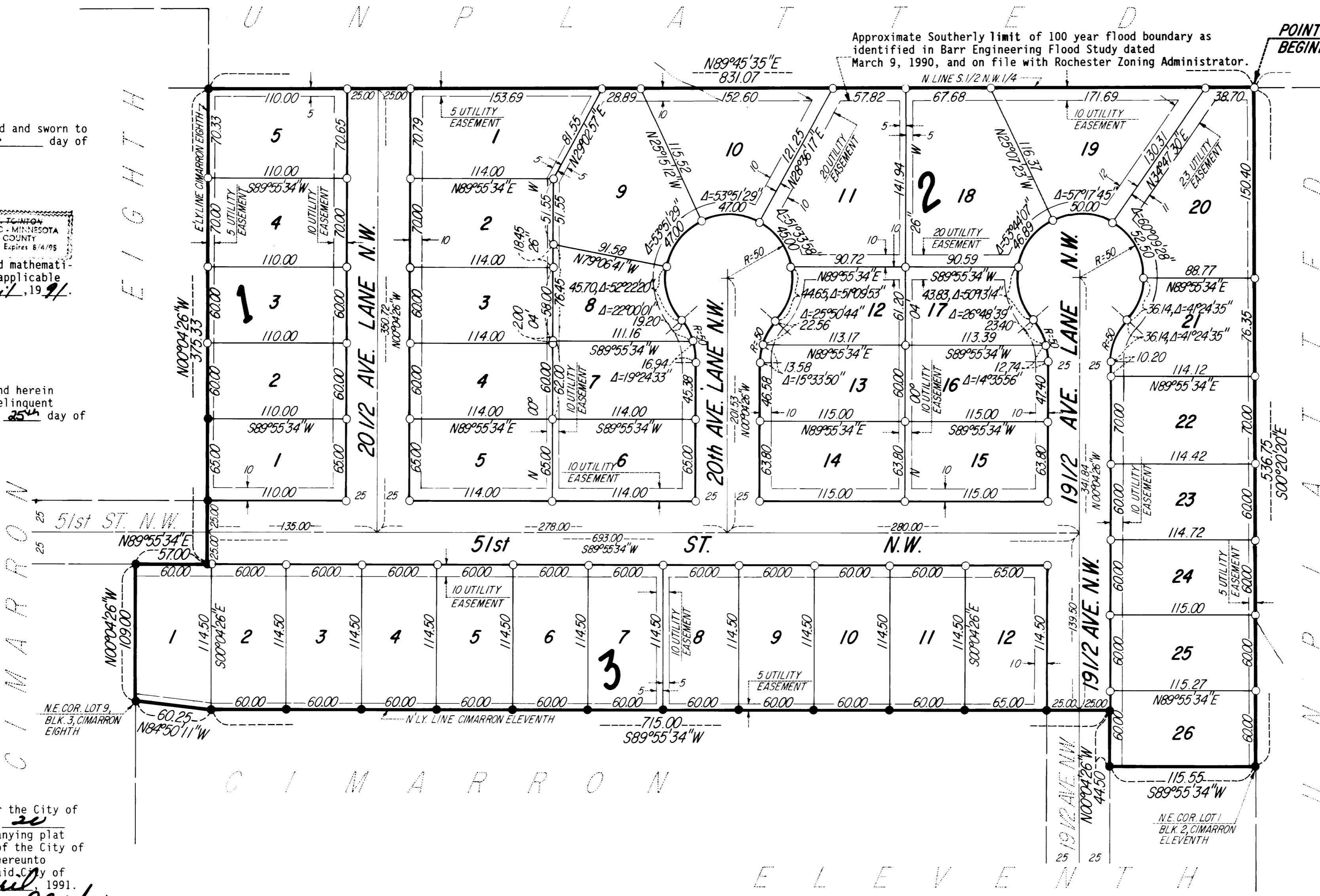
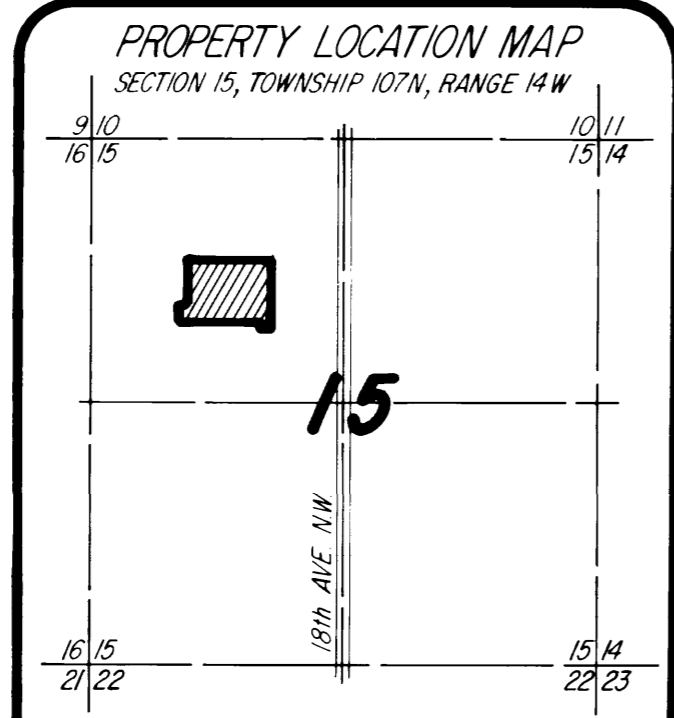
I, Carole A. Grimm, City Clerk in and for the City of Rochester, do hereby certify that on the 30 day of February, 1991, the accompanying plat was duly approved by the Common Council of the City of Rochester. In testimony thereof I have hereunto signed my name and affixed the seal of said City of Rochester this 02 day of April, 1991.

*Carole A. Grimm, City Clerk*  
County Recorder

DOCUMENT NUMBER 60-0007

I hereby certify that this instrument was filed in the office of the County Recorder for record on this 25 day of April, 1991, at 4 o'clock P.M., and was duly recorded in the Olmsted County records.

By *Catherine E. Wan*  
County Recorder  
Deputy



UTILITY EASEMENT defined:  
An unobstructed easement for the construction and maintenance of all necessary underground or surface public utilities including rights to conduct drainage and trimming on said easement.

NOTE:  
ALL MONUMENTS SHOWN THUS: ○ ARE 5/8" I.D. CAPPED PIPES SET WITH REGISTRATION NO. 11622.  
ALL MONUMENTS SHOWN THUS: ● ARE FOUND 5/8" PIPES, UNLESS OTHERWISE NOTED.  
BASIS OF BEARING SYSTEM:  
ALL BEARINGS ARE IN RELATIONSHIP WITH THE NORTH LINE S. 1/4 N.W. 1/4 SEC 15, WHICH IS ASSUMED TO BE S89°45'35" W.



### Instrument of Dedication

KNOW ALL MEN BY THESE PRESENTS: That Western Walls, Inc., a Minnesota Corporation, owner and proprietor of the following described property situated in the City of Rochester, State of Minnesota, to wit:

A part of the South Half of the Northwest Quarter of Section 15, Township 107 North, Range 14 West, Rochester, Minnesota, described as follows:

Commencing at the northeast corner of the South Half of the Northwest Quarter of said Section 15; thence South 89 degrees 45 minutes 35 seconds West, assumed bearing, along the north line of said South Half of the Northwest Quarter, 800.00 feet for a point of beginning; thence South 00 degrees 20 minutes 20 seconds East, 536.75 feet to the northeast corner of Lot 1, Block 2, CIMARRON ELEVENTH (the next 4 courses are along the northerly boundary of said CIMARRON ELEVENTH); thence South 89 degrees 55 minutes 34 seconds West, 115.55 feet; thence North 00 degrees 04 minutes 26 seconds West, 44.50 feet; thence South 89 degrees 55 minutes 34 seconds West, 715.00 feet; thence North 84 degrees 50 minutes 11 seconds West, 60.25 feet to the northeast corner of Lot 9, Block 3, CIMARRON EIGHTH (the next 3 courses are along the easterly boundary of said CIMARRON EIGHTH); thence North 00 degrees 04 minutes 26 seconds West, 109.00 feet; thence North 89 degrees 55 minutes 34 seconds East, 57.00 feet; thence North 00 degrees 04 minutes 26 seconds West, 375.33 feet to the north line of the South Half of the Northwest Quarter of said Section 15; thence North 89 degrees 45 minutes 35 seconds East along said north line, 831.07 feet to the point of beginning.

Containing 9.64 acres more or less.

have caused the same to be surveyed and platted as CIMARRON FOURTEENTH and do hereby donate and dedicate to the public for the public use forever the thoroughfares and cul-de-sacs and also dedicate the easements as shown on this plat for drainage and utility purposes only.

In witness whereof said Western Walls, Inc., a Minnesota Corporation, has caused these presents to be signed by its proper officer this 12<sup>th</sup> day of April, 1991.

*Robert D. DeWitz*  
Robert D. DeWitz, President

State of Minnesota  
County of Olmsted

The foregoing instrument was acknowledged before me this day of April, 1991, by Robert D. DeWitz, President of Western Walls, Inc., a Minnesota Corporation, on behalf of the Corporation.

*William E. Ginter*  
Notary Public, Olmsted County, Minnesota

My commission expires 8/4/95

PREPARED BY:  
McGHEE & BETTS, INC.  
CONSULTING ENGINEERS  
PLANNERS  
LAND SURVEYORS  
ROCHESTER, MINNESOTA