

OFFICIAL PLAT

OLSON PINE SUBDIVISION

Surveyor's Certificate

I hereby certify that I have surveyed and platted the property described on this plat as OLSON PINE SUBDIVISION; that this plat is a correct representation of the survey; that all distances are correctly shown on the plat in feet and hundredths of a foot; that all monuments have been correctly placed in the ground as shown; that the outside boundary lines are correctly designated on the plat; and that there are no wetlands or public highways to be designated on said plat other than as shown thereon.

James E. Swanson
James E. Swanson, R.L.S.
Minnesota Registration Number 11622

State of Minnesota
County of Olmsted

The surveyor's certificate was subscribed and sworn to before me, a Notary Public, this 19th day of September, 1990.

William F. Omsted
Notary Public, Olmsted County, Minnesota

My commission expires 

County Surveyor

I certify that this plat has been checked mathematically and that the plat conforms to the applicable platting laws, this 19th day of September, 1990.

Edward P. Kinsle
Olmsted County Surveyor

Tax Statements

Taxes due and payable for the year 1990 have been paid.

John Coaker, Deputy
Olmsted County Treasurer

Date October 16, 1990

No delinquent taxes due and transfer entered this 16th day of October, 1990.

Pamela J. Jamieson, Deputy
Olmsted County Auditor

City Approval

State of Minnesota
County of Olmsted
City of Chatfield

We, M.L. Dudek, Mayor, and Jeff Karlson, City Clerk, in and for the City of Chatfield, do hereby certify that on the 27th day of August, 1990, the accompanying plat was duly approved by the Common Council of the City of Chatfield. In testimony thereof I have hereunto signed my name and affixed the seal of said City of Chatfield this 24th day of September, 1990.

M.L. Dudek
Mayor, M.L. Dudek

Jeff Karlson
City Clerk, Jeff Karlson

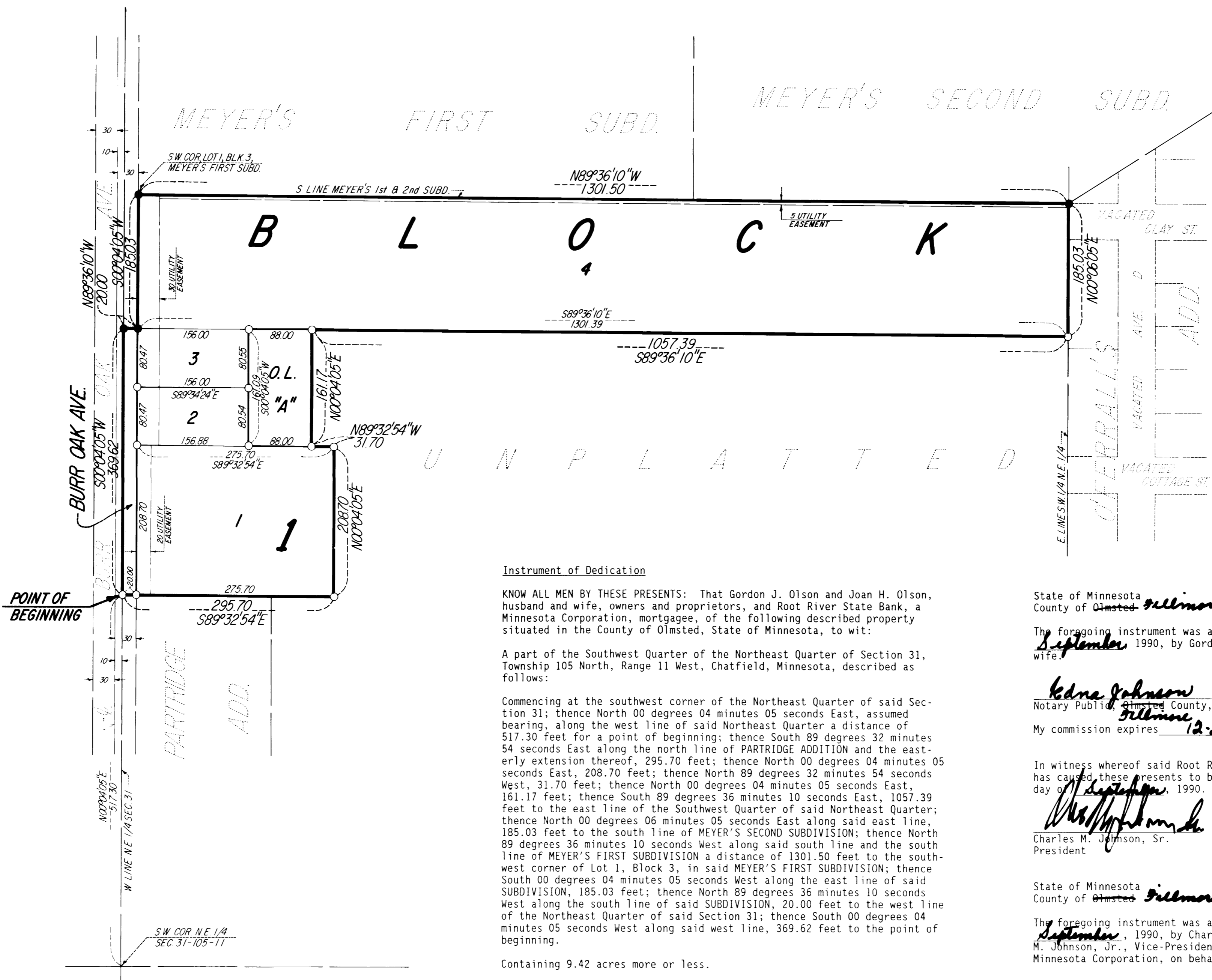
County Recorder 591-120

DOCUMENT NUMBER

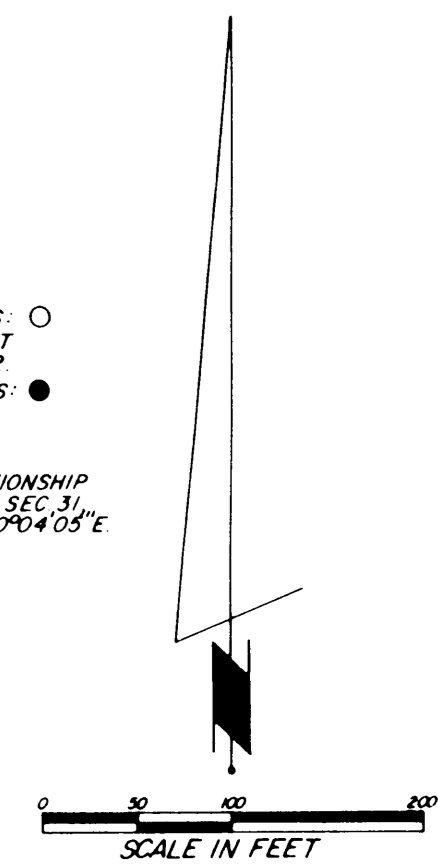
I hereby certify that this instrument was filed in the Office of the County Recorder for record on this 19th day of October, 1990, at 9:30 o'clock A.M., and was duly recorded in the Olmsted County records.

County Recorder

Katherine E. Evans
Deputy



NOTE:
ALL MONUMENTS SHOWN THUS: ○
ARE 5/8" I.D. CAPPED PIPE SET
WITH REGISTRATION NO. 11622.
ALL MONUMENTS SHOWN THUS: ●
ARE FOUND 5/8" PIPES.
BASIS OF BEARING SYSTEM:
ALL BEARINGS ARE IN RELATIONSHIP
WITH THE WEST LINE NE 1/4 SEC. 31
WHICH IS ASSUMED TO BE N00°04'03"E



UTILITY EASEMENT defined:
An unobstructed easement for the construction and maintenance of all necessary underground or surface public utilities including rights to conduct drainage and trimming on said easement.

UNPLATTED

Instrument of Dedication

KNOW ALL MEN BY THESE PRESENTS: That Gordon J. Olson and Joan H. Olson, husband and wife, owners and proprietors, and Root River State Bank, a Minnesota Corporation, mortgagee, of the following described property situated in the County of Olmsted, State of Minnesota, to wit:

A part of the Southwest Quarter of the Northeast Quarter of Section 31, Township 105 North, Range 11 West, Chatfield, Minnesota, described as follows:

Commencing at the southwest corner of the Northeast Quarter of said Section 31; thence North 00 degrees 04 minutes 05 seconds East, assumed bearing, along the west line of said Northeast Quarter a distance of 517.30 feet for a point of beginning; thence South 89 degrees 32 minutes 54 seconds East along the north line of PARTRIDGE ADDITION and the easterly extension thereof, 295.70 feet; thence North 00 degrees 04 minutes 05 seconds East, 208.70 feet; thence North 89 degrees 32 minutes 54 seconds West, 31.70 feet; thence North 00 degrees 04 minutes 05 seconds East, 161.17 feet; thence South 89 degrees 36 minutes 10 seconds East, 1057.39 feet to the east line of the Southwest Quarter of said Northeast Quarter; thence North 00 degrees 06 minutes 05 seconds East along said east line, 185.03 feet to the south line of MEYER'S SECOND SUBDIVISION; thence North 89 degrees 36 minutes 10 seconds West along said south line and the south line of MEYER'S FIRST SUBDIVISION a distance of 1301.50 feet to the southwest corner of Lot 1, Block 3, in said MEYER'S FIRST SUBDIVISION; thence South 00 degrees 04 minutes 05 seconds West along the east line of said SUBDIVISION, 185.03 feet; thence North 89 degrees 36 minutes 10 seconds West along the south line of said SUBDIVISION, 20.00 feet to the west line of the Northeast Quarter of said Section 31; thence South 00 degrees 04 minutes 05 seconds West along said west line, 369.62 feet to the point of beginning.

Containing 9.42 acres more or less.

have caused the same to be surveyed and platted as OLSON PINE SUBDIVISION and do hereby donate and dedicate to the public for the public use forever the thoroughfare and also dedicate the easements as shown on this plat for drainage and utility purposes only.

In witness whereof said Gordon J. Olson and Joan H. Olson, husband and wife, have caused these presents to be signed this 25 day of September 1990.

Gordon J. Olson Joan H. Olson
Gordon J. Olson Joan H. Olson

State of Minnesota
County of Olmsted Fillmore

The foregoing instrument was acknowledged before me this 25 day of September, 1990, by Gordon J. Olson and Joan H. Olson, husband and wife.

Kedra Johnson
Notary Public, Olmsted County, Minnesota
My commission expires 12-20-94

In witness whereof said Root River State Bank, a Minnesota Corporation, has caused these presents to be signed by its proper officers this 24 day of September, 1990.

Charles M. Johnson, Sr.
President
Charles M. Johnson, Jr.
Vice-President

State of Minnesota
County of Olmsted Fillmore

The foregoing instrument was acknowledged before me this 24 day of September, 1990, by Charles M. Johnson, Sr., President, and Charles M. Johnson, Jr., Vice-President, officers of Root River State Bank, a Minnesota Corporation, on behalf of the Corporation.

Kedra Johnson
Notary Public, Olmsted County, Minnesota
My commission expires 12-20-94

PREPARED BY:
McGHEE & BETTS, INC.
CONSULTING ENGINEERS
PLANNERS
LAND SURVEYORS
ROCHESTER, MINNESOTA