

OFFICIAL PLAT

COUNTRY CLUB ESTATES SECOND

Surveyor's Certificate

I hereby certify that I have surveyed and platted the property described on this plat as COUNTRY CLUB ESTATES SECOND; that this plat is a correct representation of the survey; that all distances are correctly shown on the plat in feet and hundredths of a foot; that all monuments have been correctly placed in the ground as shown; that the outside boundary lines are correctly designated on the plat; and that there are no wetlands or public highways to be designated on said plat other than as shown thereon.

James E. Swanson
James E. Swanson, R.L.S.
Minnesota Registration Number 11622

State of Minnesota
County of Olmsted

The surveyor's certificate was subscribed and sworn to before me, a Notary Public, this 23rd day of August, 1990.

Ray C. Bergstedt
Notary Public, Olmsted County, Minnesota

My commission expires 6/6/95

County Surveyor

I certify that this plat has been checked mathematically and that the plat conforms to the applicable platting laws, this 24th day of August, 1989.

Edward P. Kinsale
Olmsted County Surveyor

Tax Statements

Taxes due and payable for the year 1990 have been paid.

Joan Coles, Deputy
Olmsted County Treasurer

Date August 9, 1990

No delinquent taxes due and transfer entered this 9th day of August, 1990.

Daniel J. Hameister, Deputy
Olmsted County Auditor

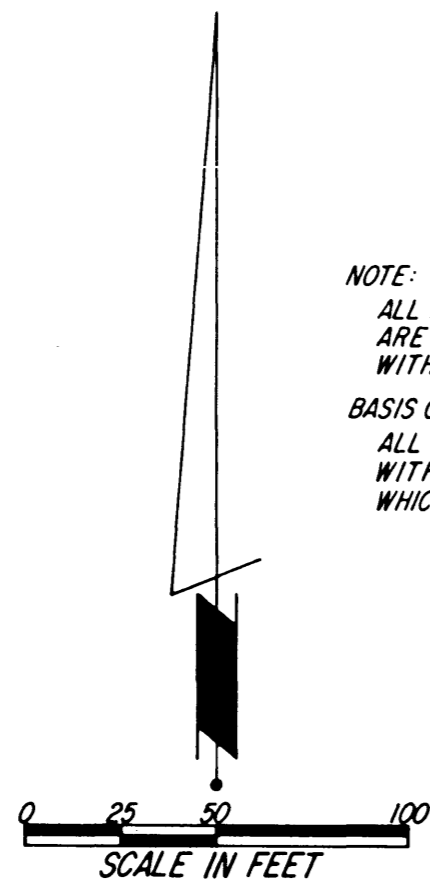
City Approval

State of Minnesota
County of Olmsted
City of Rochester

I, Carole A. Grimm, City Clerk in and for the City of Rochester, do hereby certify that on the 31 day of August, 1989, the accompanying plat was duly approved by the Common Council of the City of Rochester. In testimony thereof I have hereunto signed my name and affixed the seal of said City of Rochester this 8 day of August, 1990.

Carole A. Grimm
City Clerk

NOTE:
ALL MONUMENTS SHOWN THUS: ○
ARE 5/8" I.D. CAPPED PIPES SET
WITH REGISTRATION NO. 11622.
BASIS OF BEARING SYSTEM:
ALL BEARINGS ARE IN RELATIONSHIP
WITH THE EAST LINE S.W. 1/4 SEC. 33,
WHICH IS ASSUMED TO BE NORTH.



UTILITY EASEMENT DEFINED:

An unobstructed easement for the construction and maintenance of all necessary underground or surface public utilities including rights to conduct drainage and trimming on said easement.

Instrument of Dedication

KNOW ALL MEN BY THESE PRESENTS: That Stanley C. Mohn and Bernita R. Mohn, husband and wife, owners and proprietors of the following described property situated in the City of Rochester, State of Minnesota, to wit:

That part of the Southeast Quarter of the Southwest Quarter of Section 33, Township 107 North, Range 14 West, Olmsted County, Minnesota, described as follows:

Beginning at the southeast corner of the Southeast Quarter of the Southwest Quarter of said Section 33; thence North, assumed bearing, along the east line thereof, 216.00 feet; thence North 65 degrees 13 minutes 29 seconds West, 157.50 feet; thence North 72 degrees 23 minutes 56 seconds West, 284.73 feet; thence South 73 degrees 01 minute 02 seconds West, 80.00 feet; thence South 46 degrees 34 minutes 30 seconds West, 115.00 feet; thence South 13 degrees 21 minutes 36 seconds West, 247.38 feet; thence North 85 degrees 23 minutes 55 seconds East, 542.00 feet; thence South 53 degrees 08 minutes 24 seconds East, 114.16 feet to the point of beginning.

Containing 3.59 acres more or less.

has caused the same to be surveyed and platted as COUNTRY CLUB ESTATES SECOND and do hereby dedicate to the public for the public use forever the easements as shown on this plat for drainage and utility purposes only.

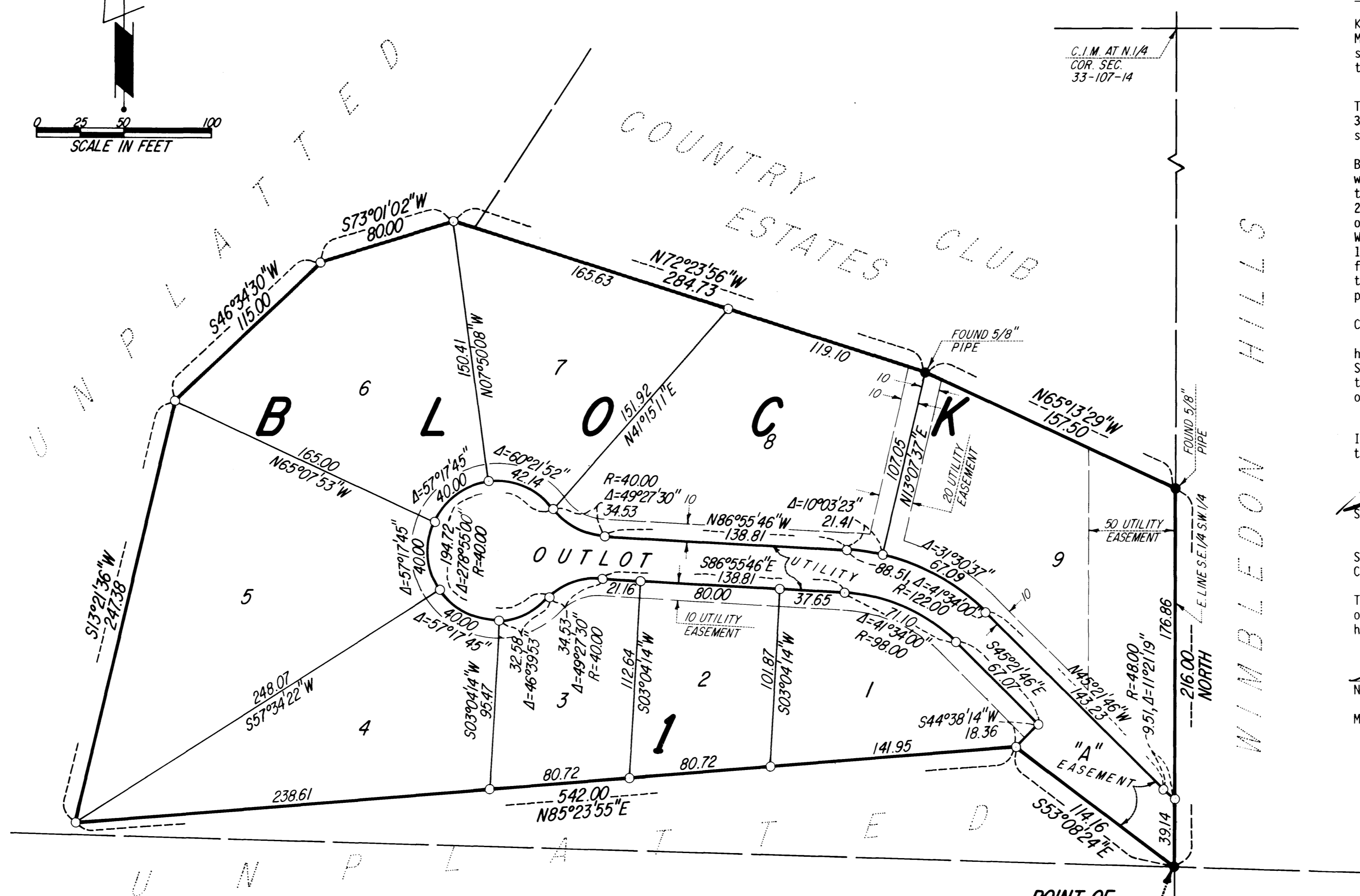
In witness whereof said Stanley C. Mohn and Bernita R. Mohn have caused these presents to be signed this 23rd day of August, 1989.

Stanley C. Mohn *Bernita R. Mohn*
Stanley C. Mohn Bernita R. Mohn

State of Minnesota
County of Olmsted

The foregoing instrument was acknowledged before me this 23rd day of August, 1989, by Stanley C. Mohn and Bernita R. Mohn, husband and wife.

Ray C. Bergstedt
Notary Public, Olmsted County, Minnesota
My commission expires 6/6/95



POINT OF BEGINNING
FOUND C.I.M.
S.E. COR. S.E. 1/4 S.W. 1/4
SEC. 33-107-14

587792

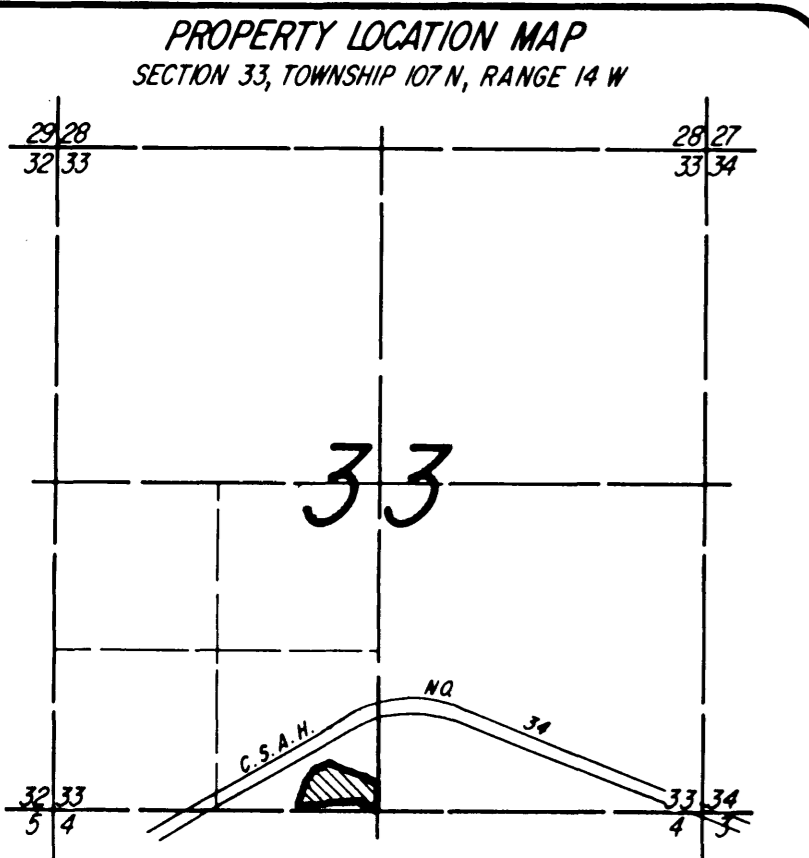
County Recorder

DOCUMENT NUMBER

I hereby certify that this instrument was filed in the Office of the County Recorder for record on this 9th day of August, 1990, at 4 o'clock P.M., and was duly recorded in the Olmsted County records.

By *[Signature]*
County Recorder

Luann Murray
Deputy



PREPARED BY:
McGHEE & BETTS, INC.
CONSULTING ENGINEERS
PLANNERS
LAND SURVEYORS
ROCHESTER, MINNESOTA