

OFFICIAL PLAT

MAYOWOOD COMMON

Surveyor's Certificate

I hereby certify that I have surveyed and platted the property described on this plat as MAYOWOOD COMMON; that this plat is a correct representation of the survey; that all distances are correctly shown on the plat in feet and hundredths of a foot; that all monuments have been correctly placed in the ground as shown; that the outside boundary lines are correctly designated on the plat; and that there are no wetlands or public highways to be designated on said plat other than as shown thereon.

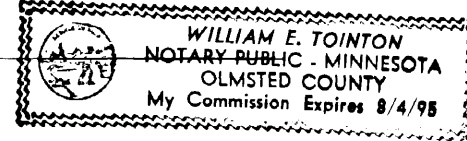
James E. Swanson, R.L.S. Minnesota Registration Number 11622

State of Minnesota County of Olmsted

The surveyor's certificate was subscribed and sworn to before me, a Notary Public, this 10th day of May, 1990.

William E. Tointon Notary Public, Olmsted County, Minnesota

My commission expires



County Surveyor

I certify that this plat has been checked mathematically and that the plat conforms to the applicable platting laws, this 14th day of May, 1990.

Edward P. Kinsle Olmsted County Surveyor

City Approval

State of Minnesota County of Olmsted City of Rochester

I, Carole A. Grimm, City Clerk in and for the City of Rochester, do hereby certify that on the 7th day of June, 1990, the accompanying plat was duly approved by the Common Council of the City of Rochester. In testimony thereof I have hereunto signed my name and affixed the seal of said City of Rochester this 4th day of Oct, 1990.

Carole A. Grimm City Clerk

Tax Statement

Taxes due and payable for the year 1990 have been paid.

Kevin Cocher, Deputy Olmsted County Treasurer

Date September 17, 1990

No delinquent taxes due and transfer entered this 5th day of October, 1990.

Samuel J. Hamister, Deputy Olmsted County Auditor

County Recorder

DOCUMENT NUMBER 590068

I hereby certify that this instrument was filed in the Office of the County Recorder for record on this 5th day of October, 1990, at 9 o'clock A.M., and was duly recorded in the Olmsted County records.

LOIS FINSTUEN County Recorder

Carole M. Ferris Deputy

Instrument of Dedication

KNOW ALL MEN BY THESE PRESENTS: That Mayowood Enterprises, Ltd., owners and proprietors of the following described property situated in the County of Olmsted, State of Minnesota, to wit:

A part of the West Three-fourths of the North Half of Section 16, Township 106 North, Range 14 West, Olmsted County, Minnesota, described as follows:

Beginning at the northeast corner of the Northwest Quarter of said Section 16; thence North 89 degrees 43 minutes 14 seconds West, assumed bearing, along the north line of said Northwest Quarter, 923.00 feet; thence South 00 degrees 03 minutes 14 seconds East, 262.40 feet; thence South 87 degrees 43 minutes 14 seconds East, 43.88 feet; thence South 06 degrees 55 minutes 23 seconds East, 235.46 feet to the northerly line of MAYOWOOD HILLS according to the plat thereof on file and of record in the office of the Olmsted County, Minnesota, Recorder (and the next nine courses are along said northerly line); thence South 84 degrees 46 minutes 30 seconds East, 1114.98 feet; thence southeasterly 252.93 feet (previously platted 252.73 feet) along a tangential curve, concave southwesterly, central angle of 32 degrees 41 minutes 30 seconds (previously platted 32 degrees 40 minutes 00 seconds), radius of 443.28 feet, and the chord of said curve bears South 68 degrees 25 minutes 45 seconds East, 249.51 feet; thence South 52 degrees 05 minutes 00 seconds East, tangent to said curve, 9.60 feet; thence southeasterly 215.10 feet along a tangential curve concave northeasterly, central angle of 32 degrees 40 minutes 00 seconds, radius of 377.28 feet, and the chord of said curve bears South 68 degrees 25 minutes 00 seconds East, 212.20 feet; thence South 84 degrees 45 minutes 00 seconds East, tangent to said curve, 22.70 feet; thence easterly 182.83 feet along a tangential curve, concave southerly, central angle of 17 degrees 16 minutes 00 seconds, radius of 606.69 feet, and the chord of said curve bears South 76 degrees 07 minutes 00 seconds East, 182.14 feet; thence South 67 minutes 29 minutes 00 seconds East, tangent to said curve, 21.60 feet; thence easterly 181.19 feet along a tangential curve, concave northerly, central angle of 19 degrees 12 minutes 00 seconds, radius of 540.69 feet, and the chord of said curve bears South 77 degrees 05 minutes 00 seconds East, 180.34 feet; thence South 86 degrees 41 minutes 00 seconds East, tangent to said curve, 153.79 feet to the northeast corner of said MAYOWOOD HILLS; thence North 04 degrees 41 minutes 36 seconds East, 870.55 feet to the northeast corner of the Northwest Quarter of the Northeast Quarter of said Section 16; thence North 89 degrees 43 minutes 42 seconds West along the north line of said Northeast Quarter, 1316.70 feet to the point of beginning.

Containing 32.36 acres more or less.

have caused the same to be surveyed and platted as MAYOWOOD COMMON and do hereby donate and dedicate to the public for the public use forever the thoroughfares, walkway and also dedicate the easements as shown on this plat for drainage and utility purposes only.

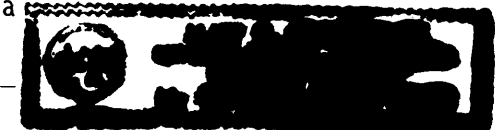
In witness whereof said Mayowood Enterprises, Ltd., a Minnesota Limited Partnership, has caused these presents to be signed by its proper officer this 11 day of May, 1990.

Bernard L. Donovan, Manager

State of Minnesota County of Olmsted

The foregoing instrument was acknowledged before me this 11 day of May, 1990, by Bernard L. Donovan, Manager of Mayowood Enterprises, Ltd., a Minnesota Limited Partnership, on behalf of said Partnership.

Notary Public, Olmsted County, Minnesota My commission expires 6/6/95

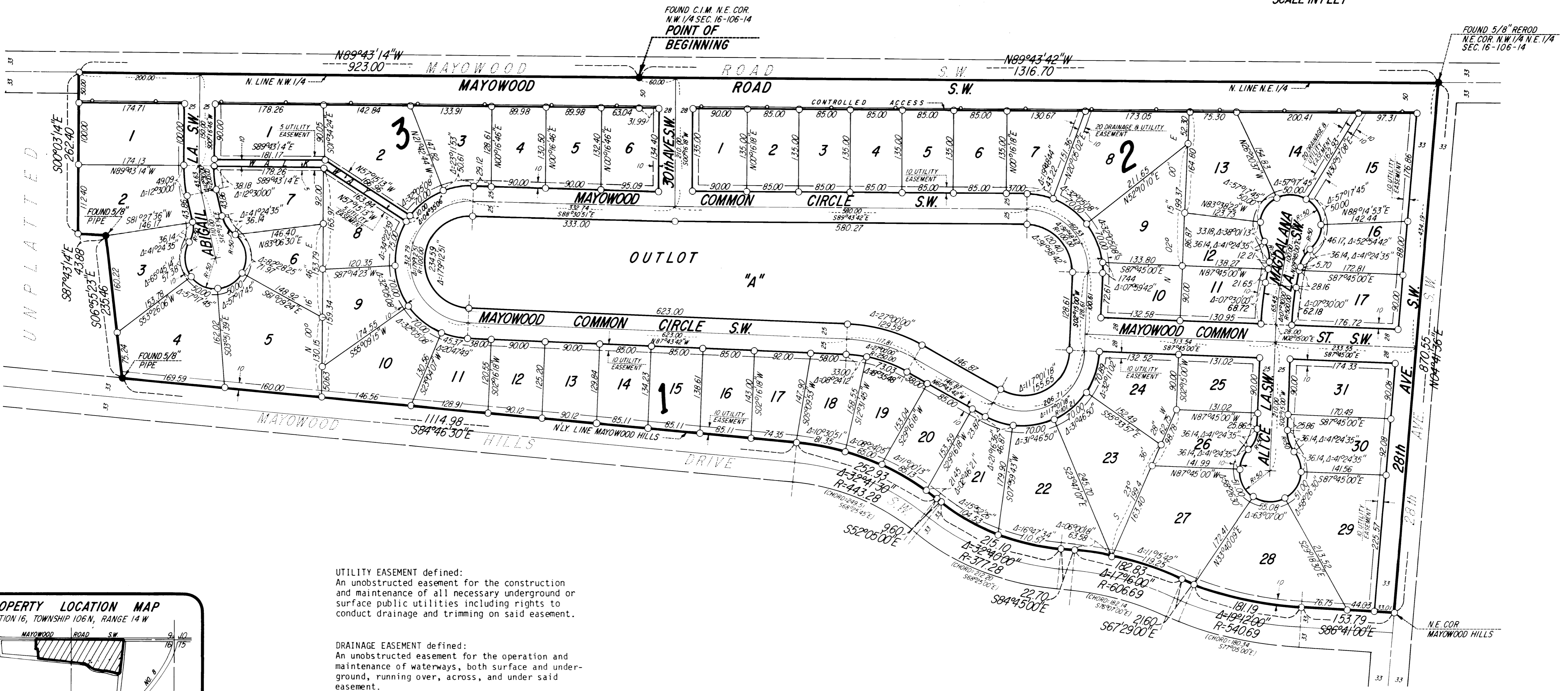


PREPARED BY: MCGHIE & BETTS, INC. CONSULTING ENGINEERS PLANNERS LAND SURVEYORS ROCHESTER, MINNESOTA

OFFICIAL PLAT

MAYOWOOD COMMON

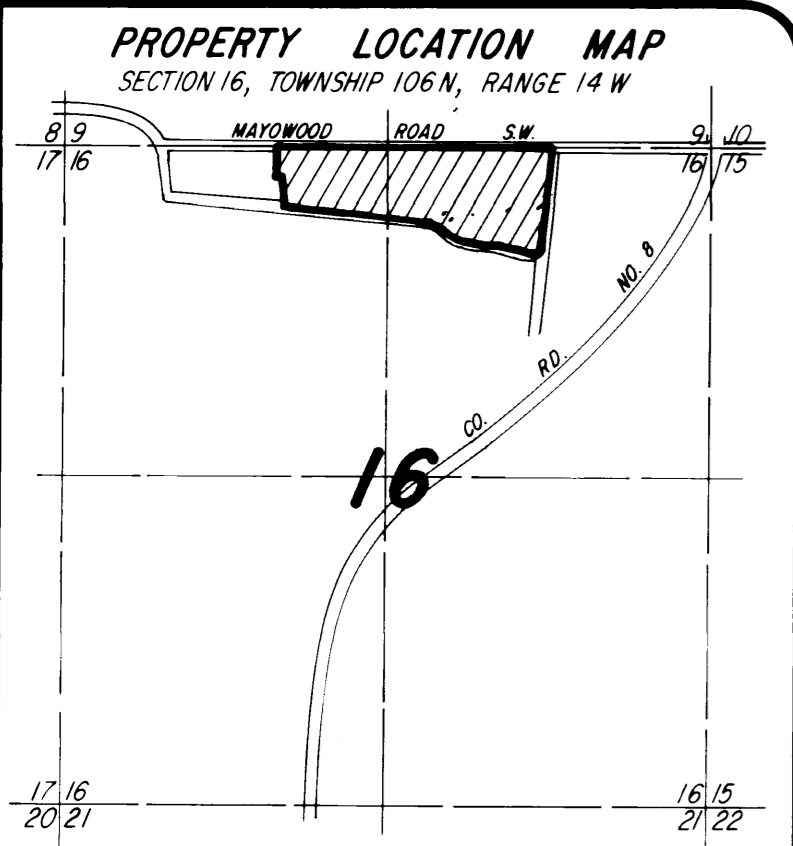
NOTE:
ALL MONUMENTS SHOWN THIS: ○
ARE 5/8" I.D. CAPPED PIPES SET
WITH REGISTRATION NO. 11622.
BASIS OF BEARING SYSTEM:
ALL BEARINGS ARE IN RELATIONSHIP
WITH THE NORTH LINE N.W. 1/4 SEC. 16,
WHICH IS ASSUMED TO BE N89°43'14"W.



UTILITY EASEMENT defined:
An unobstructed easement for the construction and maintenance of all necessary underground or surface public utilities including rights to conduct drainage and trimming on said easement.

DRAINAGE EASEMENT defined:
An unobstructed easement for the operation and maintenance of waterways, both surface and underground, running over, across, and under said easement.

CONTROLLED ACCESS defined:
Ingress or egress to from, or across, the abutting roadway Maywood Road S.W. is restricted by Olmsted County, Minnesota and said right of access is hereby dedicated to said road authority.



PREPARED BY:
McGHEE & BETTS, INC.
CONSULTING ENGINEERS
PLANNERS
LAND SURVEYORS
ROCHESTER, MINNESOTA