

CIMARRON ELEVENTH

NOTE:
 ALL MONUMENTS SHOWN THUS: ○
 ARE 5/8" I.D. CAPPED PIPES SET
 WITH REGISTRATION NO. 11622.
 ALL MONUMENTS SHOWN THUS: ●
 ARE FOUND 5/8" PIPES.
 BASIS OF BEARING SYSTEM:
 ALL BEARINGS ARE IN RELATIONSHIP
 WITH THE EAST LINE W. 1/2 SEC. 15,
 WHICH IS ASSUMED TO BE N00°20'20"W.

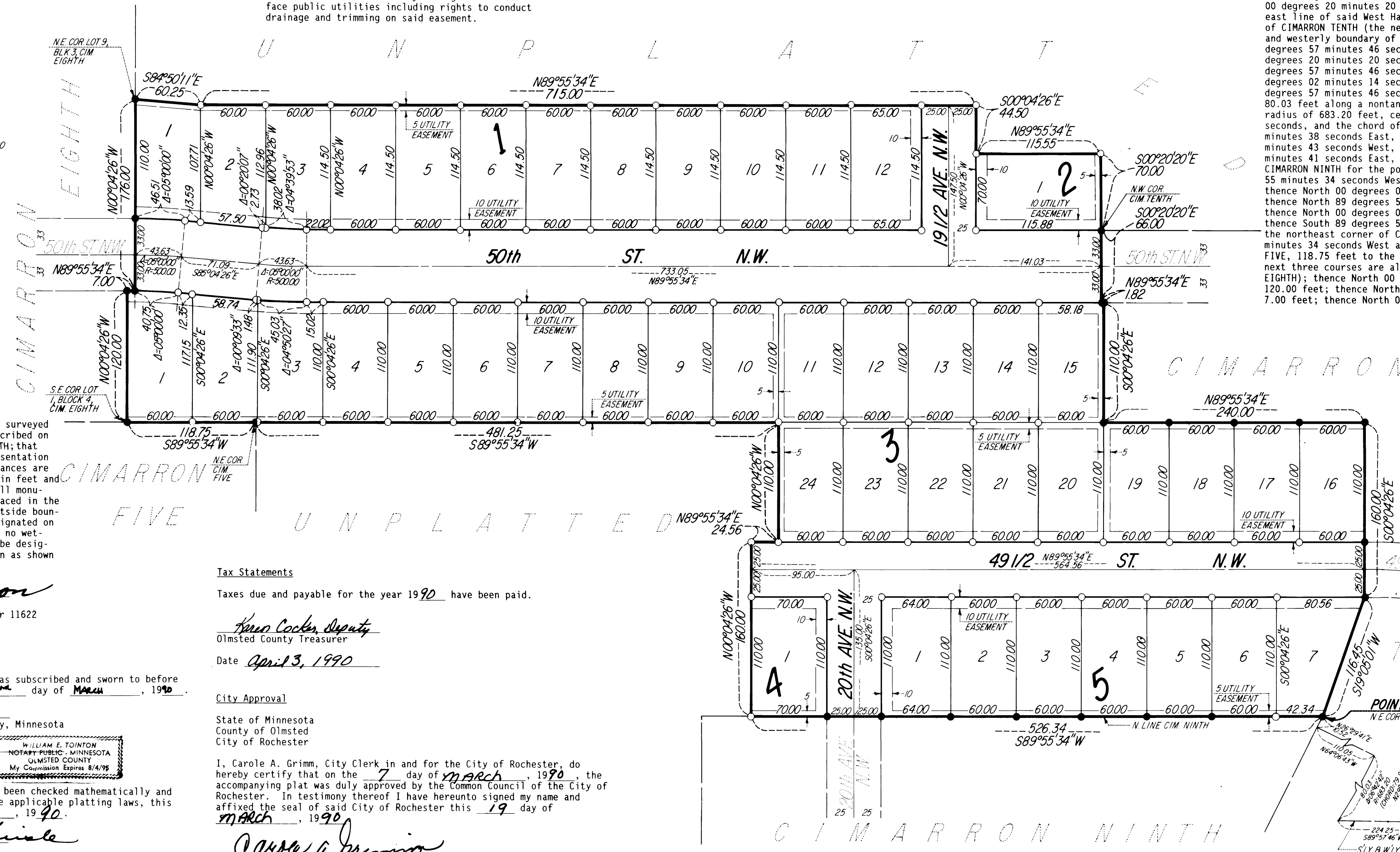
UTILITY EASEMENT defined:
 An unobstructed easement for the construction and
 maintenance of all necessary underground or sur-
 face public utilities including rights to conduct
 drainage and trimming on said easement.

Instrument of Dedication

KNOW ALL MEN BY THESE PRESENTS: That Western Walls, Inc., a
 Minnesota Corporation, owner and proprietor of the following
 described property situated in the City of Rochester, State of
 Minnesota, to wit:

That part of the West Half of Section 15, Township 107 North,
 Range 14 West, Olmsted County, Minnesota, described as follows:

Commencing at the southeast corner of said West Half; thence North
 00 degrees 20 minutes 20 seconds West, assumed bearing, along the
 east line of said West Half, 2747.14 feet to the southeast corner
 of CIMARRON TENTH (the next eight courses are along the southerly
 and westerly boundary of said CIMARRON TENTH); thence South 89
 degrees 57 minutes 46 seconds West, 160.00 feet; thence North 00
 degrees 02 minutes 14 seconds East, 10.00 feet; thence South 89
 degrees 57 minutes 46 seconds West, 25.00 feet; thence South 89
 degrees 57 minutes 46 seconds West, 159.37 feet; thence South 00
 degrees 02 minutes 14 seconds East, 10.00 feet; thence South 89
 degrees 57 minutes 46 seconds West, 224.25 feet; thence northerly
 80.03 feet along a nontangential curve, concave northwesterly,
 radius of 683.20 feet, central angle of 06 degrees 42 minutes 42
 seconds, and the chord of said curve bears North 29 degrees 14
 minutes 38 seconds East, 79.98 feet; thence North 64 degrees 06
 minutes 43 seconds West, 110.05 feet; thence North 26 degrees 29
 minutes 41 seconds East, 10.52 feet to the northeast corner of
 CIMARRON NINTH for the point of beginning; thence South 89 degrees
 55 minutes 34 seconds West along said north line, 526.34 feet;
 thence North 00 degrees 04 minutes 26 seconds West, 160.00 feet;
 thence North 89 degrees 55 minutes 34 seconds East, 24.56 feet;
 thence North 00 degrees 04 minutes 26 seconds West, 110.00 feet;
 thence South 89 degrees 55 minutes 34 seconds West, 481.25 feet to
 the northeast corner of CIMARRON FIVE; thence South 89 degrees 55
 minutes 34 seconds West along the north line of said CIMARRON
 FIVE, 118.75 feet to the southeast corner of CIMARRON EIGHTH (the
 next three courses are along the east line of said CIMARRON
 EIGHTH); thence North 00 degrees 04 minutes 26 seconds West,
 120.00 feet; thence North 89 degrees 55 minutes 34 seconds East,
 7.00 feet; thence North 00 degrees 04 minutes 26 seconds West,
 176.00 feet to the northeast corner
 of Lot 9, Block 3, in said CIMARRON
 EIGHTH; thence South 84 degrees 50
 minutes 11 seconds East, 60.25 feet;
 thence North 89 degrees 55 minutes
 34 seconds East, 715.00 feet; thence
 South 00 degrees 04 minutes 26 sec-
 onds East, 44.50 feet; thence North
 89 degrees 55 minutes 34 seconds
 East, 115.55 feet; thence South 00
 degrees 20 minutes 20 seconds East,
 70.00 feet to the northwest corner
 of CIMARRON TENTH (the next six
 courses are along the westerly line
 of said CIMARRON TENTH); thence
 South 00 degrees 20 minutes 20 sec-
 onds East, 66.00 feet; thence North
 89 degrees 55 minutes 34 seconds
 East, 1.82 feet; thence South 00
 degrees 04 minutes 26 seconds East,
 110.00 feet; thence North 89 degrees



Surveyor's Certificate

I hereby certify that I have surveyed and
 platted the property described on
 this plat as CIMARRON ELEVENTH; that
 this plat is a correct representation
 of the survey; that all distances are
 correctly shown on the plat in feet and
 hundredths of a foot; that all mon-
 uments have been correctly placed in the
 ground as shown; that the outside bound-
 ary lines are correctly designated on the
 plat; and that there are no wet-
 lands or public highways to be designat-
 ed on said plat other than as shown
 thereon.

James E. Swanson
 James E. Swanson, R.L.S.
 Minnesota Registration Number 11622

State of Minnesota
 County of Olmsted
 The surveyor's certificate was subscribed and sworn to before
 me, a Notary Public, this 2nd day of March, 1990.

William E. Tointon
 Notary Public, Olmsted County, Minnesota

My commission expires 8/4/95
 County Surveyor

I certify that this plat has been checked mathematically and
 that the plat conforms to the applicable platting laws, this
2nd day of March, 1990.

Edward P. Kuciale
 Olmsted County Surveyor

Tax Statements

Taxes due and payable for the year 1990 have been paid.

Kevin Cooker, Deputy
 Olmsted County Treasurer

Date April 3, 1990

City Approval

State of Minnesota
 County of Olmsted
 City of Rochester
 I, Carole A. Grimm, City Clerk in and for the City of Rochester, do
 hereby certify that on the 7 day of MARCH, 1990, the
 accompanying plat was duly approved by the Common Council of the City
 of Rochester. In testimony thereof I have hereunto signed my name and
 affixed the seal of said City of Rochester this 19 day of
MARCH, 1990.

Carole A. Grimm
 City Clerk

No delinquent taxes due and transfer entered this 3rd day of
April, 1990.

Samuel J. Hamistky, Deputy
 Olmsted County Auditor

County Recorder
 DOCUMENT NUMBER 5042

I hereby certify that this instrument was filed in the Office of the
 County Recorder for record on this 4 day of April
 1990, at 8 o'clock A.M., and was duly recorded in the Olmsted
 County records.

Carole A. Grimm
 County Recorder Deputy

State of Minnesota
 County of Olmsted

The foregoing instrument was acknowledged before me
 this 2nd day of MARCH, 1990, by
 Robert D. DeWitz, President of Western Walls, Inc., a
 Minnesota Corporation, on behalf of the Corporation.

William E. Tointon
 Notary Public, Olmsted County, Minnesota

My commission expires 8/4/95

55 minutes 34 seconds East, 240.00 feet; thence South
 00 degrees 04 minutes 26 seconds East, 160.00
 feet; thence South 19 degrees 05 minutes 01 second
 West, 116.45 feet to the point of beginning.

Containing 9.24 acres more or less.

have caused the same to be surveyed and platted as
 CIMARRON ELEVENTH and do hereby donate and dedicate to
 the public for the public use forever the thorough-
 fares and also dedicate the easements as shown on this
 plat for drainage and utility purposes only.

In witness whereof said Western Walls, Inc., a Minne-
 sota Corporation, has caused these presents to be
 signed by its proper officer this 2nd day of
MARCH, 1990.

Robert D. DeWitz
 Robert D. DeWitz, President

PREPARED BY:
 McGHIE & BETTS, INC.
 CONSULTING ENGINEERS
 PLANNERS
 LAND SURVEYORS
 ROCHESTER, MINNESOTA

