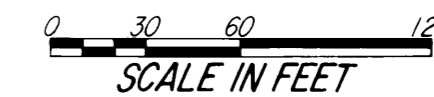


# OFFICIAL PLAT

## NORTH PARK FIFTH SUBDIVISION



NOTE:  
 ALL MONUMENTS SHOWN THUS: ○  
 ARE 5/8" I.D. CAPPED PIPES SET  
 WITH REGISTRATION NO. 11622.  
 ALL MONUMENTS SHOWN THUS: ●  
 ARE FOUND 5/8" PIPES.  
 BASIS OF BEARING SYSTEM:  
 ALL BEARINGS ARE IN RELATIONSHIP  
 WITH THE SOUTH LINE S E 1/4 SEC 8,  
 WHICH IS ASSUMED TO BE WEST.



Surveyor's Certificate  
 I hereby certify that I have surveyed and platted the property described on this plat as NORTH PARK FIFTH SUBDIVISION; that this plat is a correct representation of the survey; that all distances are correctly shown on the plat in feet and hundredths of a foot; that all monuments have been correctly placed in the ground as shown; that the outside boundary lines are correctly designated on the plat; and that there are no wetlands or public highways to be designated on said plat other than shown thereon.

*James E. Swanson*  
 James E. Swanson, R.L.S.  
 Minnesota Registration Number 11622

State of Minnesota  
 County of Olmsted  
 The surveyor's certificate was subscribed and sworn to before me, a Notary Public, this 18<sup>th</sup> day of December, 1989.

*William E. Tontz*  
 Notary Public, Olmsted County, Minnesota  
 My commission expires 6/4/95

I certify that this plat has been checked mathematically and that the plat conforms to the applicable platting laws, this day of December, 1989.

*Edward P. Knize*  
 Olmsted County Surveyor

Tax Statements  
 Taxes due and payable for the year 19 89 have been paid.

*James Locker, Deputy*  
 Olmsted County Treasurer  
 Date December 19, 1989

No delinquent taxes due and transfer entered this 29<sup>th</sup> day of December, 1989.

*Daniel J. Varnestru, Deputy*  
 Olmsted County Auditor

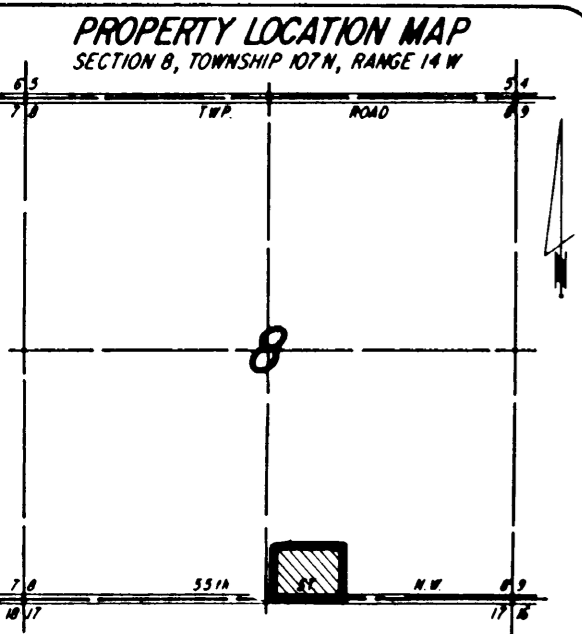
County Recorder  
 DOCUMENT NUMBER 575323

I hereby certify that this instrument was filed in the Office of the County Recorder for record on this 29<sup>th</sup> day of December, 1989, at 1 o'clock P.M., and was duly recorded in the Olmsted County records.

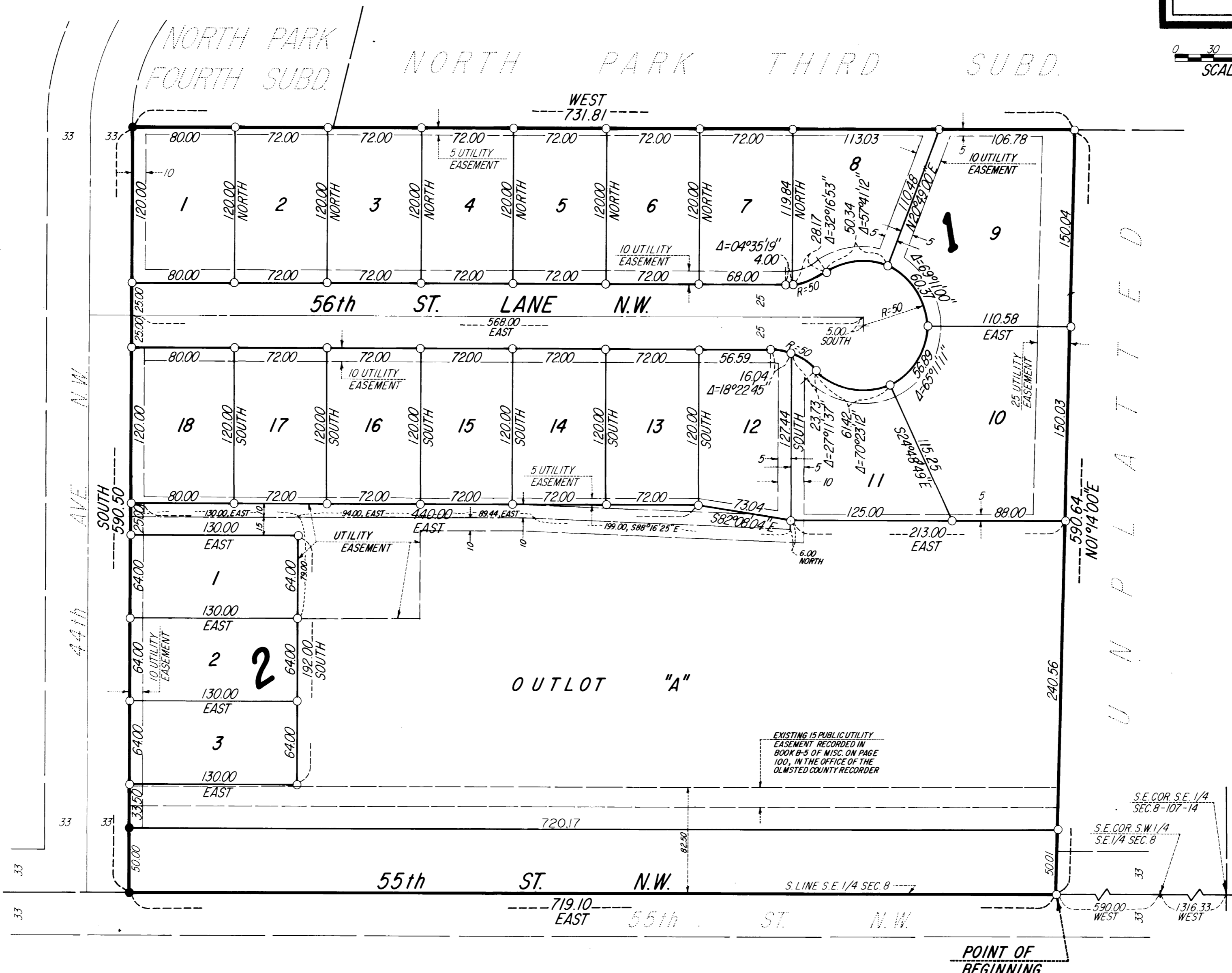
By *Lisa Fasten*  
 County Recorder  
*Nancy Johnson*  
 Deputy

City Approval  
 State of Minnesota  
 County of Olmsted  
 City of Rochester  
*JUDY KAY SCHERRA, DEPUTY*  
 I, *Judy Kay Scherra*, City Clerk in and for the City of Rochester, do hereby certify that on the 18<sup>th</sup> day of DECEMBER, 1989, the accompanying plat was duly approved by the Common Council of the City of Rochester. In testimony thereof I have hereunto signed my name and affixed the seal of said City of Rochester this 29<sup>th</sup> day of DECEMBER, 1989.

*Judy Kay Scherra, Deputy*  
 City Clerk



UTILITY EASEMENT DEFINED:  
 An unobstructed easement for the construction and maintenance of all necessary underground or surface public utilities including rights to conduct drainage and trimming on said easement.



Instrument of Dedication  
 KNOW ALL MEN BY THESE PRESENTS: That Leo Ciani and Marlene Ciani, husband and wife, S.L. Contracting, Inc., a Minnesota Corporation, L&R Construction, Inc., a Minnesota Corporation, owners and proprietors of the following described property situated in the City of Rochester, State of Minnesota, to wit:

That part of the Southeast Quarter of Section 8, Township 107 North, Range 14 West, Olmsted County, Minnesota, described as follows:

Commencing at the southeast corner of the Southeast Quarter of said Section 8; thence West, assumed bearing, along the south line 1316.33 feet to the southeast corner of the Southwest Quarter of said Southeast Quarter; thence continue West, along said south line, 590.00 feet for the point of beginning; thence North 01 degree 14 minutes 00 seconds East, 590.64 feet; thence West, 731.81 feet; thence South, 590.50 feet to the south line of said Southeast Quarter; thence East, along said south line, 719.10 feet to the point of beginning.

Containing 9.83 acres more or less.

have caused the same to be surveyed and platted as NORTH PARK FIFTH SUBDIVISION and do hereby donate and dedicate to the public for the public use forever the thoroughfare and cul-de-sac, and also dedicate the easements as shown on this plat for drainage and utility purposes only.

In witness whereof said Leo Ciani and Marlene Ciani have caused these presents to be signed this 14<sup>th</sup> day of December, 1989.

*Leo Ciani*  
 Leo Ciani  
*Marlene Ciani*  
 Marlene Ciani

State of Minnesota  
 County of Olmsted

The foregoing instrument was acknowledged before me this 14<sup>th</sup> day of December, 1989, by Leo Ciani and Marlene Ciani, husband and wife.

*William E. Tontz*  
 Notary Public, Olmsted County, Minnesota

My commission expires 6/4/95

In witness whereof said S.L. Contracting, Inc., has caused these presents to be signed by its proper officer this 14<sup>th</sup> day of December, 1989.

*Scott Lampland*  
 Scott Lampland, President

State of Minnesota  
 County of Olmsted

The foregoing instrument was acknowledged before me this 14<sup>th</sup> day of December, 1989, by Scott Lampland, President of S.L. Contracting, Inc., a Minnesota Corporation, on behalf of the Corporation.

*William E. Tontz*  
 Notary Public, Olmsted County, Minnesota

My commission expires 6/4/95

In witness whereof said L&R Construction, Inc., has caused these presents to be signed by its proper officer this 14<sup>th</sup> day of December, 1989.

*Leslie Lurken*  
 Leslie Lurken, President

State of Minnesota  
 County of Olmsted

The foregoing instrument was acknowledged before me this 14<sup>th</sup> day of December, 1989, by Leslie Lurken, President of L&R Construction, Inc., a Minnesota Corporation, on behalf of the Corporation.

*William E. Tontz*  
 Notary Public, Olmsted County, Minnesota  
 My commission expires 6/4/95

PREPARED BY:  
 MCGHEE & BETTS, INC.  
 CONSULTING ENGINEERS  
 PLANNERS  
 LAND SURVEYORS  
 ROCHESTER, MINNESOTA