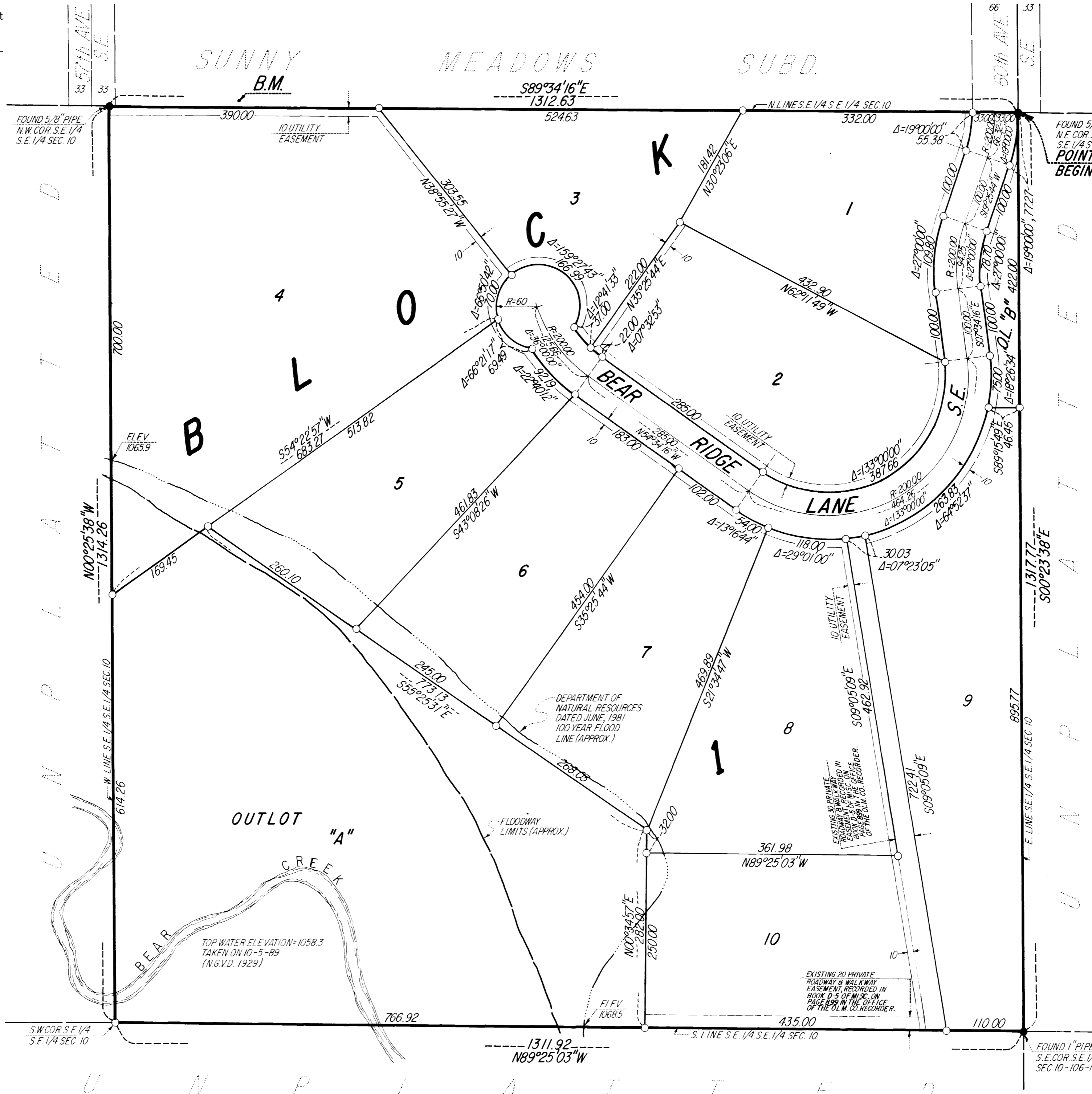
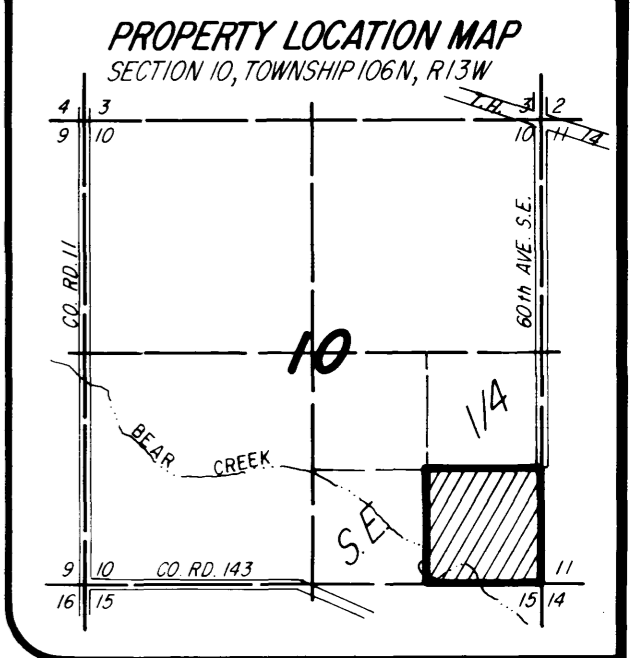


# OFFICIAL PLAT

## BEAR RIDGE SUBDIVISION



B.M. ELEV. 1106.81  
 R.R. SPIKE IN 18" OAK TREE  
 ON SOUTH SIDE LOT 1, BLOCK  
 2, SUNNY MEADOWS SUBD.  
 (N.G.V.D. 1929)



NOTE:  
 ALL MONUMENTS SHOWN THUS: ○  
 ARE 5/8" I.D. CAPPED PIPES SET  
 WITH REGISTRATION NO. 11622.  
 BASIS OF BEARING SYSTEM:  
 ALL BEARINGS ARE IN RELATIONSHIP  
 WITH THE EAST LINE S.E. 1/4 S.E. 1/4 SEC. 10,  
 WHICH IS ASSUMED TO BE S00°23'38"E.

Surveyor's Certificate  
 I hereby certify that I have surveyed and platted the property described on this plat as BEAR RIDGE SUBDIVISION; that this plat is a correct representation of the survey; that all distances are correctly shown on the plat in feet and hundredths of a foot; that all monuments have been correctly placed in the ground as shown; that the outside boundary lines are correctly designated on the plat; and that there are no wetlands or public highways to be designated on said plat other than as shown thereon.

*James E. Swanson*  
 James E. Swanson, R.L.S.  
 Minnesota Registration Number 11622

State of Minnesota  
 County of Olmsted  
 The surveyor's certificate was subscribed and sworn to before me, a Notary Public, this 8<sup>th</sup> day of December, 1989.

*William E. Tointon*  
 Notary Public, Olmsted County, Minnesota

My commission expires 8/4/95  
 WILLIAM E. TOINTON  
 NOTARY PUBLIC - MINNESOTA  
 OLMDST COUNTY  
 My Commission Expires 8/4/95

County Surveyor  
 I certify that this plat has been checked mathematically and that the plat conforms to the applicable platting laws, this 11<sup>th</sup> day of December, 1989.

*Edward P. Kuisle*  
 Olmsted County Surveyor

County Engineer  
 Approved this 13<sup>th</sup> day of December, 1989, by Olmsted County Engineer.

*Michael Sheehan*  
 Michael Sheehan, County Engineer

Tax Statements  
 Taxes due and payable for the year 1989 have been paid.

*Kathryn Weatherly Deputis*  
 Olmsted County Treasurer  
 Date December 19, 1989

No delinquent taxes due and transfer entered this 19<sup>th</sup> day of December, 1989.

*Samuel J. Namistek, Deputy*  
 Olmsted County Auditor

State of Minnesota  
 County of Olmsted  
 I do hereby certify that the accompanying plat was duly approved by the Olmsted County Board of Commissioners at a meeting held on the 19<sup>th</sup> day of December, 1989. I have signed my name and affixed the seal of said County this 19<sup>th</sup> day of December, 1989.

*Samuel J. Namistek, Deputy*  
 Olmsted County Auditor

Planning Commission  
 We, the members of the Olmsted County Planning Advisory Commission, do hereby certify that we have examined the plat as shown and find that it conforms to the provisions of the Subdivision Ordinance of Olmsted County.

*Richard J. J. J. J.*  
 Commission Chairman

Township Board  
 The Township Board of Supervisors of Marion Township, Olmsted County, do hereby certify that we have approved the accompanying plat. In testimony thereof, we have signed our names this 12<sup>th</sup> day of December, 1989.

*George W. Harkley* Township Board Chairman  
*Janet Nyymana* Township Board Member

County Recorder  
 By LOIS FINSTUEN County Recorder  
Carolann Ferries Deputy

DOCUMENT NUMBER 575303  
 I hereby certify that this instrument was filed in the Office of the County Recorder for record on this 19 day of December, 1989, at 10:00 o'clock A.M., and was duly recorded in the Olmsted County records.  
 By LOIS FINSTUEN County Recorder  
Carolann Ferries Deputy

County Board of Health  
 The Olmsted County Board of Health has approved this plat for water supply and sewage disposal system.  
Josh A. Sachse  
 Supervisor, Division of Environmental Health,  
 Olmsted County Health Department

UTILITY EASEMENT defined:  
 An unobstructed easement for the construction and maintenance of all necessary underground or surface public utilities including rights to conduct drainage and trimming on said easement.

Instrument of Dedication  
 KNOW ALL MEN BY THESE PRESENTS: That Darrell Strain and Janise Strain, husband and wife, owners and proprietors of the following described property situated in the County of Olmsted, State of Minnesota, to wit:  
 The Southeast Quarter of the Southeast Quarter of Section 10, Township 106 North, Range 13 West, Olmsted County, Minnesota.  
 Containing 39.64 acres more or less.  
 have caused the same to be surveyed and platted as BEAR RIDGE SUBDIVISION and do hereby donate and dedicate to the public for the public use forever the cul-de-sac and also dedicate the easements as shown on this plat for drainage and utility purposes only.

In witness whereof said Darrell Strain and Janise Strain have caused these presents to be signed this 9<sup>th</sup> day of December, 1989.

*Darrell Strain* Darrell Strain  
*Janise Strain* Janise Strain

State of Minnesota  
 County of Olmsted  
 The foregoing instrument was acknowledged before me this 9<sup>th</sup> day of December, 1989, by Darrell Strain and Janise Strain, husband and wife.

*William E. Tointon*  
 Notary Public, Olmsted County, Minnesota

My commission expires 8/4/95  
 WILLIAM E. TOINTON  
 NOTARY PUBLIC - MINNESOTA  
 OLMDST COUNTY  
 My Commission Expires 8/4/95

PREPARED BY:  
 McGHIE & BETTS, INC.  
 CONSULTING ENGINEERS  
 PLANNERS  
 LAND SURVEYORS  
 ROCHESTER, MINNESOTA