

OFFICIAL PLAT

L.C. INDUSTRIAL PARK SUBDIVISION

Surveyor's Certificate

I hereby certify that I have surveyed and platted the property described on this plat as L.C. INDUSTRIAL PARK SUBDIVISION; that this plat is a correct representation of the survey; that all distances are correctly shown on the plat in feet and hundredths of a foot; that all monuments have been correctly placed in the ground as shown; that the outside boundary lines are correctly designated on the plat; and that there are no wetlands or public highways to be designated on said plat other than as shown thereon.

James E. Swanson, R.L.S. Minnesota Registration Number 11622

State of Minnesota County of Olmsted

The surveyor's certificate was subscribed and sworn to before me, a Notary Public, this 14th day of September, 1989.

William E. Tinton, Notary Public, Olmsted County, Minnesota

My commission expires [Notary Seal: William E. Tinton, Notary Public - Minnesota, Olmsted County, My Commission Expires 8/4/98]

County Surveyor

I certify that this plat has been checked mathematically and that the plat conforms to the applicable plating laws, this 15th day of September, 1989.

Edward P. Kinale, Olmsted County Surveyor

County Engineer

Approved this 2nd day of October, 1989, by Olmsted County Engineer.

Michael Sheehan, County Engineer

Tax Statements

Taxes due and payable for the year 1989 have been paid.

Kevin Cocker, Deputy, Olmsted County Treasurer

Date October 5, 1989

No delinquent taxes due and transfer entered this 5th day of October, 1989.

Samuel J. Hamister, Deputy, Olmsted County Auditor

State of Minnesota County of Olmsted

I do hereby certify that the accompanying plat was duly approved by the Olmsted County Board of Commissioners at a meeting held on the 3rd day of October, 1989. I have signed my name and affixed the seal of said County this 5th day of October, 1989.

Samuel J. Hamister, Deputy, Olmsted County Auditor

Planning Commission

We, the members of the Olmsted County Planning Advisory Commission, do hereby certify that we have examined the plat as shown and find that it conforms to the provisions of the Subdivision Ordinance of Olmsted County.

Robert H. Flores, Commission Chairman

County Board of Health

The Olmsted County Board of Health has approved this plat for water supply and sewage disposal system.

Stephen A. Jackson, Supervisor, Division of Environmental Health, Olmsted County Health Department

Instrument of Dedication

KNOW ALL MEN BY THESE PRESENTS: That Lloyd V. Crum, a single person, and Rochester Car Rental, Inc., a Minnesota Corporation, and Mayo Foundation, a Minnesota Nonprofit Corporation, as holder of an unrecorded purchasers interest, owners and proprietors, and Norwest Bank Minnesota Southeast, a National Association, mortgagee for Rochester Car Rental, Inc., of the following described property situated in the City of Rochester, State of Minnesota, to wit:

The Northeast Quarter of the Northeast Quarter of Section 10, Township 105 North, Range 14 West, Olmsted County, Minnesota.

Containing 39.36 acres more or less.

have caused the same to be surveyed and platted as L.C. INDUSTRIAL PARK SUBDIVISION and do hereby donate and dedicate to the public for the public use forever the thoroughfares and also dedicate the easements as shown on this plat for drainage and utility purposes only.

In witness whereof said Lloyd V. Crum has caused these presents to be signed this 20th day of September, 1989.

Lloyd V. Crum

State of Minnesota County of Olmsted

The foregoing instrument was acknowledged before me this 20th day of September, 1989, by Lloyd V. Crum, a single person.

Ronald L. Ress, Notary Public, Olmsted County, Minnesota. My commission expires [Notary Seal: Ronald L. Ress, Notary Public - Minnesota, Olmsted County, My Commission Expires Aug. 30, 1990]

In witness whereof said Rochester Car Rental, Inc., a Minnesota Corporation, has caused these presents to be signed by its proper officer this 19th day of Sept., 1989.

J. Grafton Love, Jr., President

State of Minnesota County of Olmsted

The foregoing instrument was acknowledged before me this 19th day of September, 1989, by J. Grafton Love, Jr., President of Rochester Car Rental, Inc., on behalf of the Corporation.

Ronald L. Ress, Notary Public, Olmsted County, Minnesota. My commission expires [Notary Seal: Ronald L. Ress, Notary Public - Minnesota, Olmsted County, My Commission Expires Aug. 30, 1990]

Township Board

The Township Board of Supervisors of High Forest Township, Olmsted County, do hereby certify that we have approved the accompanying plat. In testimony thereof, we have signed our names this 3rd day of October, 1989.

William Kinale, Township Board Chairman; Henry Schuman, Township Board Clerk

County Recorder 571575

DOCUMENT NUMBER

I hereby certify that this instrument was filed in the Office of the County Recorder for record on this 5th day of Oct., 1989, at 4 o'clock P.M., and was duly recorded in the Olmsted County records.

By Lew Finstuen, County Recorder

Nancy Johnson, Deputy

In witness whereof said Mayo Foundation, a Minnesota Nonprofit Corporation, has caused these presents to be signed by its proper officers this 21st day of September, 1989.

Rw Fleming, Mayo Foundation

State of Minnesota County of Olmsted

The foregoing instrument was acknowledged before me this 21st day of September, 1989, by RW FLEMING and G. ORWELL, on behalf of the Nonprofit Corporation.

Diane E. Dore, Notary Public, Olmsted County, Minnesota. My commission expires [Notary Seal: Diane E. Dore, Notary Public - Minnesota, Olmsted County]

In witness whereof said Norwest Bank Minnesota Southeast, a National Association, has caused these presents to be signed by its proper officers this 22nd day of September, 1989.

M. Jed Ellerbroek, Vice-President; Robert B. Clowes, Vice-President

State of Minnesota County of Olmsted

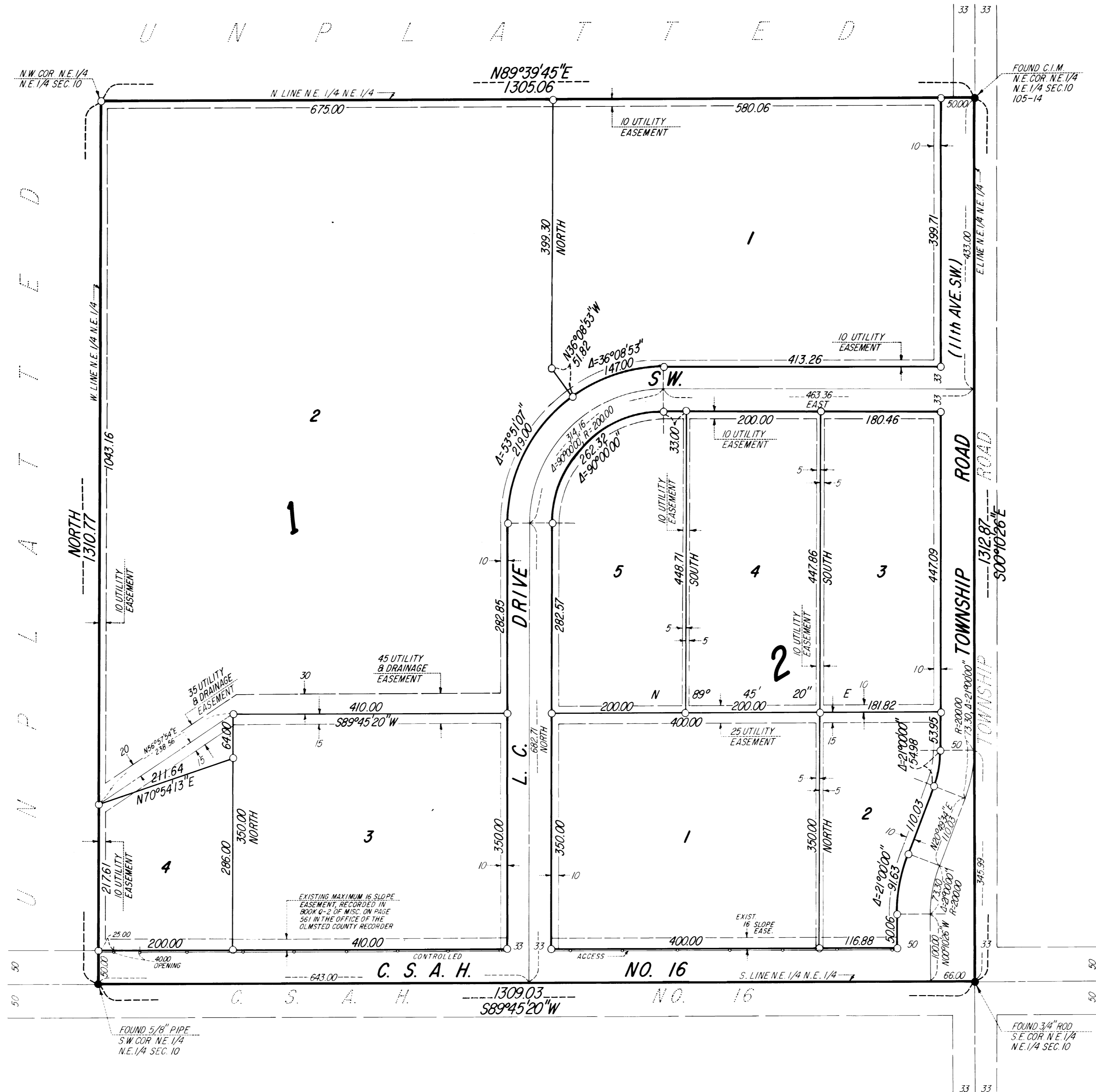
The foregoing instrument was acknowledged before me this 22nd day of September, 1989, by M. Jed Ellerbroek, Vice-President, and Robert B. Clowes, Vice-President, officers of Norwest Bank Minnesota Southeast, a National Association, on behalf of the Corporation.

Michelle R. Sursuly, Notary Public, Olmsted County, Minnesota. My commission expires [Notary Seal: Michelle R. Sursuly, Notary Public - Minnesota, Olmsted County]

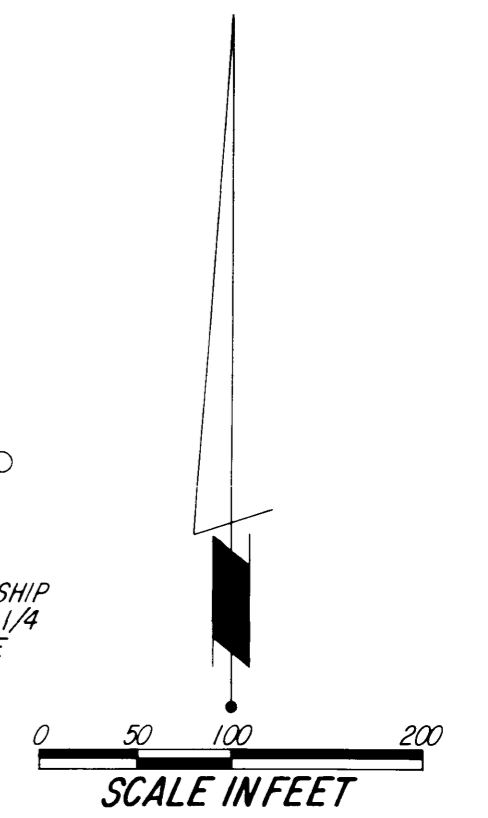
PREPARED BY: McGHEE & BETTS, INC. CONSULTING ENGINEERS PLANNERS LAND SURVEYORS ROCHESTER, MINNESOTA

# L.C. INDUSTRIAL PARK SUBDIVISION

U N P L A T T E D



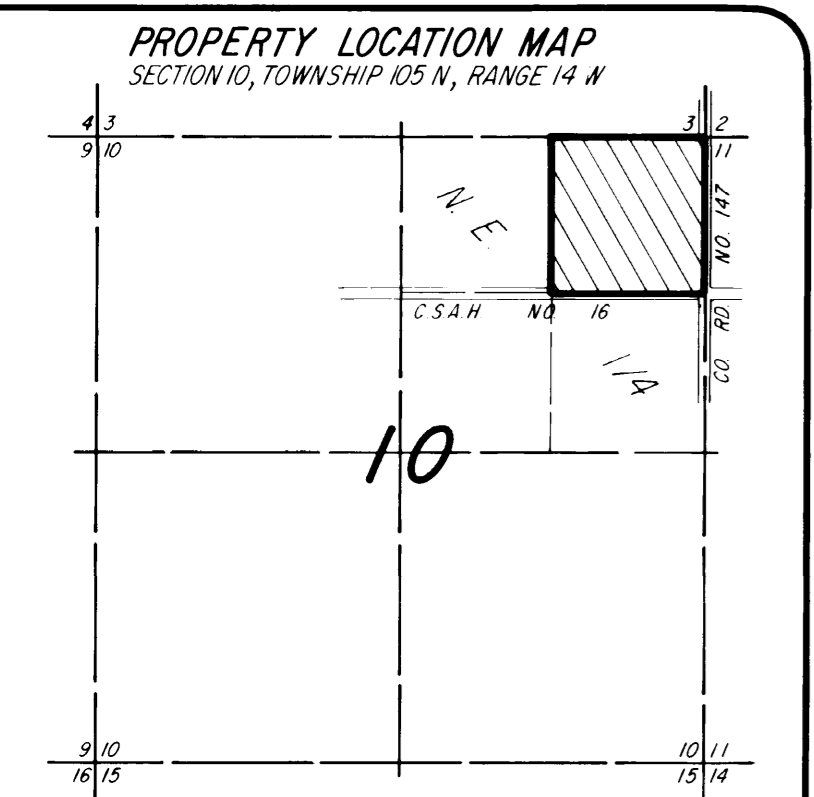
NOTE:  
ALL MONUMENTS SHOWN THUS: ○  
ARE 5/8" I.D. CAPPED PIPES SET  
WITH REGISTRATION NO. 11622.  
BASIS OF BEARING SYSTEM:  
ALL BEARINGS ARE IN RELATIONSHIP  
WITH THE EAST LINE N.E. 1/4 N.E. 1/4  
SEC. 10, WHICH IS ASSUMED TO BE  
S00°10'26"E.



UTILITY EASEMENT defined:  
An unobstructed easement for the construction and maintenance of all necessary underground or surface public utilities including rights to conduct drainage and trimming on said easement.

CONTROLLED ACCESS defined:  
Ingress or egress to, from, or across the abutting roadway C.S.A.H. No. 16 is restricted by Olmsted County, Minnesota, and said right of access is hereby dedicated to said road authority.

DRAINAGE EASEMENT defined:  
An unobstructed easement for the operation and maintenance of waterways, both surface and underground, running over, across, and under said easement.



PREPARED BY:  
McGHEE & BETTS, INC.  
CONSULTING ENGINEERS  
PLANNERS  
LAND SURVEYORS  
ROCHESTER, MINNESOTA