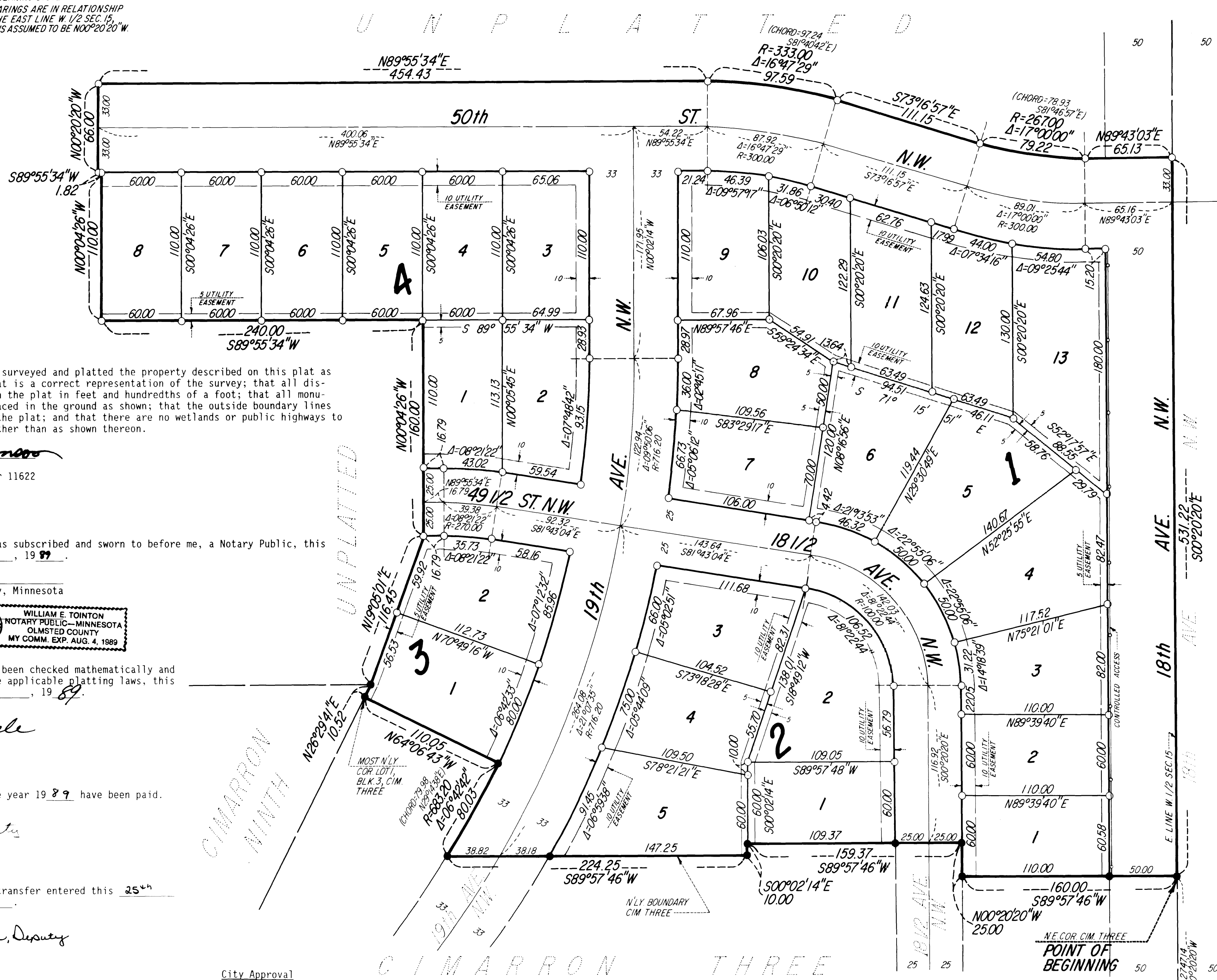


OFFICIAL PLAT

CIMARRON TENTH

PROPERTY LOCATION MAP
SECTION 15, TOWNSHIP 107N, RANGE 14W

NOTE:
ALL MONUMENTS SHOWN THUS: ○
ARE 5/8" I.D. CAPPED PIPES SET
WITH REGISTRATION NO. 11622.
ALL MONUMENTS SHOWN THUS: ●
ARE FOUND 5/8" PIPES.
BASIS OF BEARING SYSTEM:
ALL BEARINGS ARE IN RELATIONSHIP
WITH THE EAST LINE W. 1/2 SEC. 15,
WHICH IS ASSUMED TO BE N00°20'20"W



Instrument of Dedication

KNOW ALL MEN BY THESE PRESENTS:
That Western Walls, Inc., a
Minnesota Corporation, and the
City of Rochester, Minnesota, a
Municipal Corporation, owners and
proprietors of the following de-
scribed property situated in the
City of Rochester, State of
Minnesota, to wit:

That part of the West Half of
Section 15, Township 107 North,
Range 14 West, Olmsted County,
Minnesota, described as follows:

Commencing at the southeast corner of said West Half; thence
North 00 degrees 20 minutes 20 seconds West, assumed bearing,
along the east line of said West Half, 2747.14 feet to the
northeast corner of CIMARRON THREE for the point of beginning
(the next seven courses are along the northerly boundary of
said CIMARRON THREE); thence South 89 degrees 57 minutes 46
seconds West, 160.00 feet; thence North 00 degrees 20 minutes
20 seconds West, 25.00 feet; thence South 89 degrees 57 minutes
46 seconds West, 159.37 feet; thence South 00 degrees 02
minutes 14 seconds East, 10.00 feet; thence North 89 degrees 57 minutes
46 seconds West, 224.25 feet; thence northerly 80.03 feet along a non-
tangential curve, concave northwesterly, radius of 683.20 feet, central
angle of 06 degrees 42 minutes 42 seconds, and the chord of said curve
bears North 29 degrees 14 minutes 38 seconds East, 79.98 feet; thence
North 64 degrees 06 minutes 43 seconds West, 110.05 feet to the most
northerly corner of Lot 1, Block 3, in said CIMARRON THREE; thence North
26 degrees 29 minutes 41 seconds East, 10.52 feet; thence North 19 de-
grees 05 minutes 01 second East, 116.45 feet; thence North 00 degrees 04
minutes 26 seconds West, 160.00 feet; thence South 89 degrees 55 minutes
34 seconds West, 240.00 feet; thence North 00 degrees 04 minutes 26 sec-
onds West, 110.00 feet; thence South 89 degrees 55 minutes 34 seconds
West, 1.82 feet; thence North 00 degrees 20 minutes 20 seconds West,
66.00 feet; thence North 89 degrees 55 minutes 34 seconds East, 454.43
feet; thence easterly 97.59 feet along a tangential curve, concave
southerly, radius of 333.00 feet, delta angle of 16 degrees 47 minutes
29 seconds and the chord of said curve bears South 81 degrees 40 minutes
42 seconds East, 97.24 feet; thence South 73 degrees 16 minutes 57 sec-
onds East, tangent to said curve, 111.15 feet; thence easterly 79.22
feet along a tangential curve, concave northerly, radius of 267.00 feet,
delta angle of 17 degrees 00 minutes 00 seconds and the chord of said
curve bears South 81 degrees 46 minutes 57 seconds East, 78.93 feet;
thence North 89 degrees 43 minutes 03 seconds East, tangent to the last
described curve, 65.13 feet to the east line of said West Half; thence
South 00 degrees 20 minutes 20 seconds East, along said east line,
531.22 feet to the point of beginning.

Containing 8.08 acres more or less.

have caused the same to be surveyed and platted as CIMARRON TENTH and do
hereby donate and dedicate to the public for the public use forever the
thoroughfares and also dedicate the easements as shown on this plat for
drainage and utility purposes only.

In witness whereof said Western Walls, Inc., a Minnesota Corporation,
has caused these presents to be signed by its proper officer this
19th day of May, 1989.

Robert D. DeWitz
Robert D. DeWitz, President

State of Minnesota
County of Olmsted

The foregoing instrument was acknowledged before me this 19th day
of May, 1989, by Robert D. DeWitz, President of Western
Walls, Inc., a Minnesota Corporation, on behalf of the Corporation.

William E. Tointon
Notary Public, Olmsted County, Minnesota

My commission expires [Stamp]

In witness whereof the City of Rochester, Minnesota, a Municipal Corpo-
ration, has caused these presents to be signed by its proper officers
this 5th day of June, 1989.

Chuck Hazama Carol A. Grimm
Chuck Hazama, Mayor Carol A. Grimm, City Clerk

State of Minnesota
County of Olmsted

The foregoing instrument was acknowledged before me this 5th day
of June, 1989, by Chuck Hazama, Mayor, and Carol A.
Grimm, City Clerk, on behalf of the City of Rochester, Minnesota.

Judy Kay Schaefer
Notary Public, Olmsted County, Minnesota

My commission expires [Stamp]

PREPARED BY:
McGhie & Betts, Inc.
CONSULTING ENGINEERS
PLANNERS
LAND SURVEYORS
ROCHESTER, MINNESOTA

Surveyor's Certificate

I hereby certify that I have surveyed and platted the property described on this plat as
CIMARRON TENTH; that this plat is a correct representation of the survey; that all dis-
tances are correctly shown on the plat in feet and hundredths of a foot; that all monu-
ments have been correctly placed in the ground as shown; that the outside boundary lines
are correctly designated on the plat; and that there are no wetlands or public highways to
be designated on said plat other than as shown thereon.

James E. Swanson
James E. Swanson, R.L.S.
Minnesota Registration Number 11622

State of Minnesota
County of Olmsted

The surveyor's certificate was subscribed and sworn to before me, a Notary Public, this
18th day of May, 1989.

William E. Tointon
Notary Public, Olmsted County, Minnesota

My commission expires [Stamp]

County Surveyor

I certify that this plat has been checked mathematically and
that the plat conforms to the applicable platting laws, this
23rd day of May, 1989.

Edward Kuide
Olmsted County Surveyor

Tax Statements

Taxes due and payable for the year 1989 have been paid.

Kathryn Weatherly Deputy
Olmsted County Treasurer

Date Sept. 25, 1989

No delinquent taxes due and transfer entered this 25th
day of September, 1989.

Paul A. Jamester, Deputy
Olmsted County Auditor

County Recorder

DOCUMENT NUMBER [Stamp]

I hereby certify that this instrument was filed in the
Office of the County Recorder for record on this 25th
day of September, 1989, at 10:10 clock A.M.,
and was duly recorded in the Olmsted County records.

County Recorder

Carol A. Grimm
Deputy

City Approval

State of Minnesota
County of Olmsted
City of Rochester

I, Carole A. Grimm, City Clerk in and for the City of Rochester, do hereby certify that on the
15th day of May, 1989, the accompanying plat was duly approved by the Com-
mon Council of the City of Rochester. In testimony thereof I have hereunto signed my name and
affixed the seal of said City of Rochester this 22nd day of Sept, 1989.

Carole A. Grimm
City Clerk

UTILITY EASEMENT defined:

An unobstructed easement for the construction and
maintenance of all necessary underground or sur-
face public utilities including rights to conduct
drainage and trimming on said easement.

EXISTING CONTROLLED ACCESS defined:

Ingress or egress to, from, or across the abutting
roadway is restricted by the road authority pursu-
ant to Minnesota State Statute 160.08.