

OFFICIAL PLAT

WHITE BRIDGE WOODS

Surveyor's Certificate

I hereby certify that I have surveyed and plotted the property described on this plat as WHITE BRIDGE WOODS; that this plat is a correct representation of the survey; that all distances are correctly shown on the plat in feet and hundredths of a foot; that all monuments have been correctly placed in the ground as shown; that the outside boundary lines are correctly designated on the plat; and that there are no wet lands as defined in MS 505.02, Subd. 1, or public highways to be designated other than as shown.

James E. Swanson
James E. Swanson, R.L.S.
Minnesota License Number 11622

State of Minnesota
County of Olmsted

The surveyor's certificate was subscribed and sworn to before me, a Notary Public, this 25th day of August, 1994.

Lily J. Bartz
Notary Public, Olmsted County, Minnesota

My commission expires: 

County Surveyor

I certify that this plat has been checked mathematically and that the plat conforms to the applicable laws, this 25th day of August, 1994.

Edward P. Kruice
Olmsted County Surveyor

Tax Statements

Taxes payable in the year 1994 on the land herein described have been paid, there are no delinquent taxes and transfer has been entered this 25th day of August, 1994.

Bob Luan
Olmsted County Auditor/Treasurer
By *James Cochran* Deputy

County Approval

State of Minnesota
County of Olmsted

I do hereby certify that the accompanying plat was duly approved by the Olmsted County Board of Commissioners at a meeting held on the 14th day of October, 1994. I have signed my name and affixed the seal of said County this 30th day of November, 1994.

Bob Luan
Olmsted County Auditor
By *James Cochran*, Deputy
Planning Commission

We, the members of the Olmsted County Planning Advisory Commission, do hereby certify that we have examined the plat as shown and find that it conforms to the provisions of the Subdivision Ordinance of Olmsted County.

Dennis J. Dwyer
Commission Chairman

Township Board

The Township Board of Supervisors of Oronoco Township, Olmsted County, do hereby certify that we have approved the accompanying plat. In testimony thereof, we have signed our names this 18th day of September, 1994.

James C. Lindmark
Township Board Chairman

COUNTY ENGINEER
APPROVED THIS 28 DAY OF Nov, 1994, BY
OLMSTED COUNTY ENGINEER
Michael Sheehan
MICHAEL SHEEHAN, COUNTY ENGINEER

County Recorder 695905
DOCUMENT NUMBER 695905

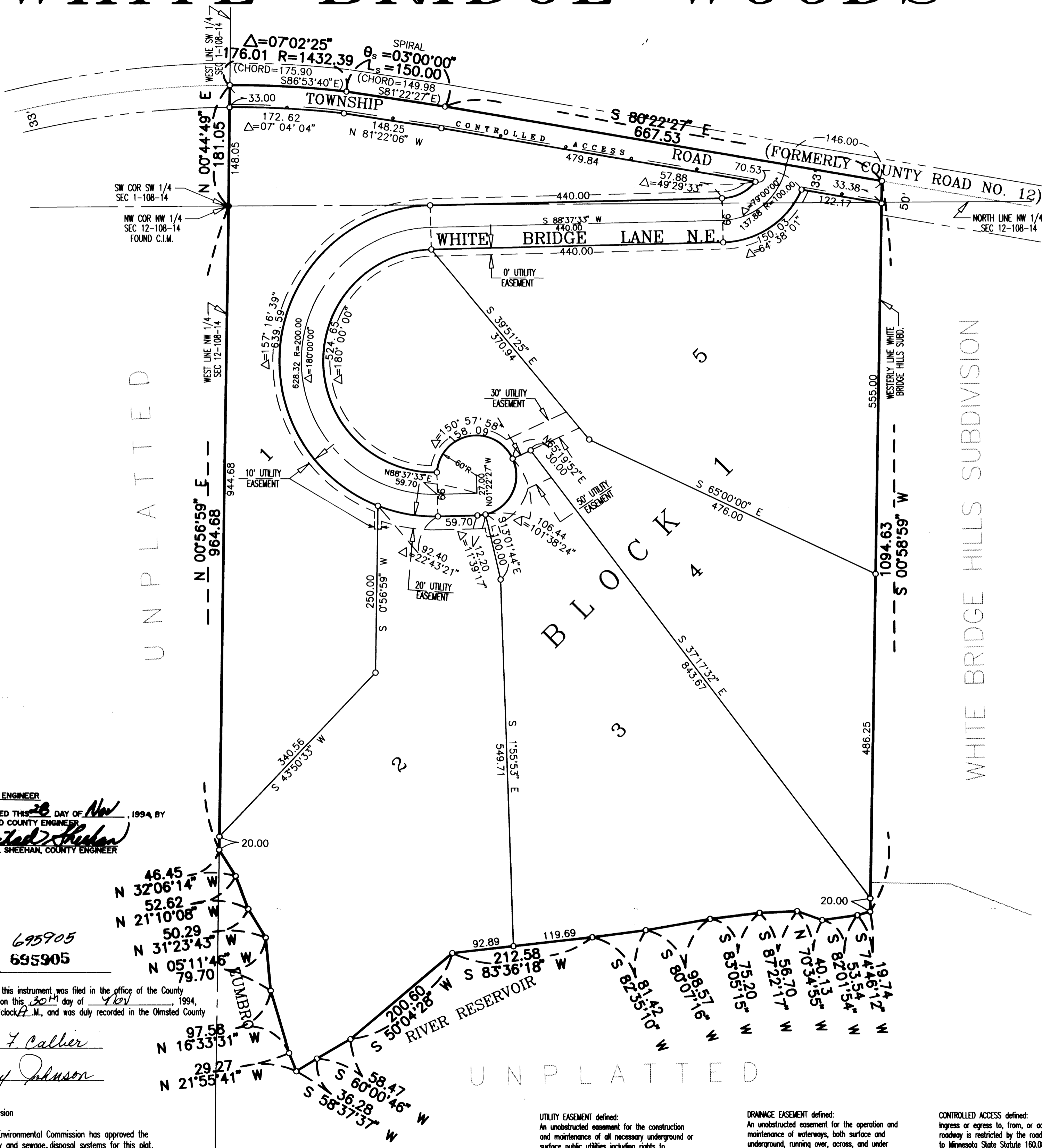
I hereby certify that this instrument was filed in the office of the County Recorder for record on this 30th day of Nov, 1994, at 10:12 o'clock A.M., and was duly recorded in the Olmsted County records.

By *Mary F. Callier*
County Recorder
Darcy Johnson
Deputy

Environmental Commission

The Olmsted County Environmental Commission has approved the plans for water supply and sewage disposal systems for this plat.

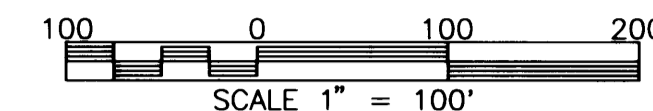
Gui Maki R.S.
Olmsted County Environmental Specialist



NOTE:
ALL MONUMENTS SHOWN THUS: ○
ARE 5/8" I.D. CAPPED PIPES SET
WITH REGISTRATION NO. 11622.

ALL MONUMENTS SHOWN THUS: ●
ARE FOUND 3/8" PIPES.

BASIS OF BEARING SYSTEMS:
ALL BEARINGS ARE IN RELATIONSHIP
WITH THE WEST LINE N.W. 1/4 SEC 12-108-14,
WHICH IS ASSUMED TO BE N 0°56'59" E.



Instrument of Dedication

KNOW ALL MEN BY THESE PRESENTS: That Swenberg Engineering, Inc., a Minnesota Corporation, vendor of an unrecorded contract for deed, and Jerry R. Schultz and Mary A. Schultz, husband and wife, vendees of an unrecorded contract for deed, and Randy W. Reynolds and Mary K. Reynolds, husband and wife, vendees of an unrecorded contract for deed, owners and proprietors of the following described property situated in the County of Olmsted, State of Minnesota, to wit:

That part of the West Half of the Northwest Quarter of Section 12, Township 108 North, Range 14 West, Olmsted County, Minnesota, which lies west of the most westerly line of WHITE BRIDGE HILLS SUBDIVISION, and northerly of the water's edge of the Zumbro River hydroelectric power dam reservoir as defined in the warranty deed to the City of Rochester dated December 31, 1917 and recorded in Book 123 of deeds on page 491,

Also:

That part of the Southwest Quarter of the Southwest Quarter of Section 1, Township 108 North, Range 14 West, Olmsted County, Minnesota, which lies south of County Road No. 12 (now township road), and west of the most westerly line of WHITE BRIDGE HILLS SUBDIVISION.

Containing 27.90 acres, more or less.

have caused the same to be surveyed and platted as WHITE BRIDGE WOODS and do hereby donate and dedicate to the public for the public use forever the thoroughfare and cul-de-sac and also dedicate the easements as shown on this plat for drainage and utility purposes only.

In witness whereof said Swenberg Engineering, Inc., a Minnesota Corporation, has caused these presents to be signed by its proper officer this 30 day of August, 1994.

Walter A. Swenberg
Walter A. Swenberg, President

State of Minnesota
County of Olmsted

The foregoing instrument was acknowledged before me this 30 day of August, 1994, by Walter A. Swenberg, President of Swenberg Engineering, Inc., on behalf of the Corporation.

Michael P. Saugen
Notary Public, Olmsted County, Minnesota
My commission expires 4, 5, 1996

In witness whereof said Jerry R. Schultz and Mary A. Schultz, husband and wife, have caused these presents to be signed this 26 day of August, 1994.

State of Minnesota
County of Olmsted
Jerry Schultz Mary Schultz

The foregoing instrument was acknowledged before me this 26 day of August, 1994, by Jerry R. Schultz and Mary A. Schultz, husband and wife.

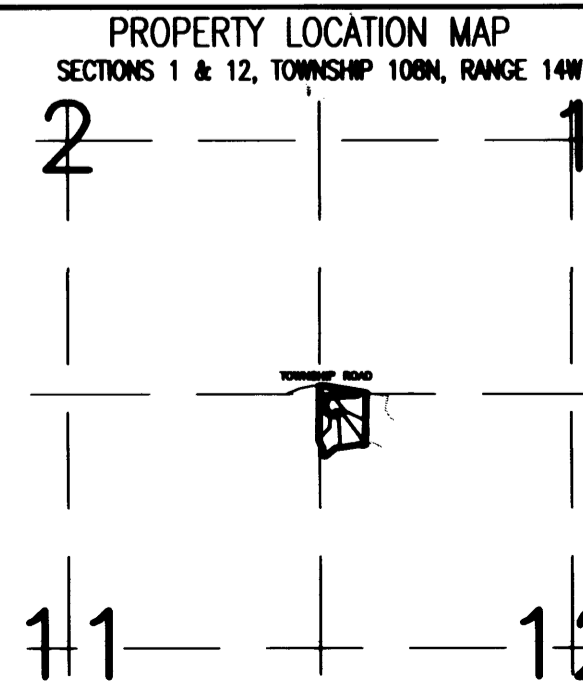
Michael P. Saugen
Notary Public, Olmsted County, Minnesota
My commission expires April 5, 1996

In witness whereof said Randy W. Reynolds and Mary K. Reynolds, husband and wife, have caused these presents to be signed this 26 day of August, 1994.

State of Minnesota
County of Olmsted
Randy W. Reynolds Mary K. Reynolds

The foregoing instrument was acknowledged before me this 26 day of August, 1994, by Randy W. Reynolds and Mary K. Reynolds, husband and wife.

Michael P. Saugen
Notary Public, Olmsted County, Minnesota
My commission expires April 5, 1996



UTILITY EASEMENT defined:
An unobstructed easement for the construction and maintenance of all necessary underground or surface public utilities including rights to conduct drainage and trimming on said easement.

DRAINAGE EASEMENT defined:
An unobstructed easement for the operation and maintenance of waterways, both surface and underground, running over, across, and under said easement.

CONTROLLED ACCESS defined:
Ingress or egress to, from, or across the abutting roadway is restricted by the road authority pursuant to Minnesota State Statute 160.06.

PREPARED BY:
MCHEE & BETTS, INC.
CONSULTING ENGINEERS
PLANNERS, LAND SURVEYORS
ROCHESTER, MINNESOTA