

OFFICIAL PLAT

CIMARRON NINTH

Surveyor's Certificate

I hereby certify that I have surveyed and platted the property described on this plat as CIMARRON NINTH; that this plat is a correct representation of the survey; that all distances are correctly shown on the plat in feet and hundredths of a foot; that all monuments have been correctly placed in the ground as shown; that the outside boundary lines are correctly designated on the plat; and that there are no wetlands or public highways to be designated on said plat other than as shown thereon.

James E. Swanson
James E. Swanson, R.L.S.
Minnesota Registration Number 11622

State of Minnesota
County of Olmsted

The surveyor's certificate was subscribed and sworn to before me, a Notary Public, this 31st day of May, 1989.

William E. Tointon
Notary Public, Olmsted County, Minnesota

My commission expires
WILLIAM E. TOINTON
NOTARY PUBLIC—MINNESOTA
OLMSTED COUNTY
MY COMM. EXP. AUG. 4, 1989

County Surveyor
I certify that this plat has been checked mathematically and that the plat conforms to the applicable platting laws, this 16th day of May, 1989.

Edward Kneale
Olmsted County Surveyor

Tax Statements

Taxes due and payable for the year 1989 have been paid.

Green Cocker Deputy
Olmsted County Treasurer

Date May 31, 1989

No delinquent taxes due and transfer entered this 31st day of May, 1989.

Daniel J. Wameister, Deputy
Olmsted County Auditor

County Recorder

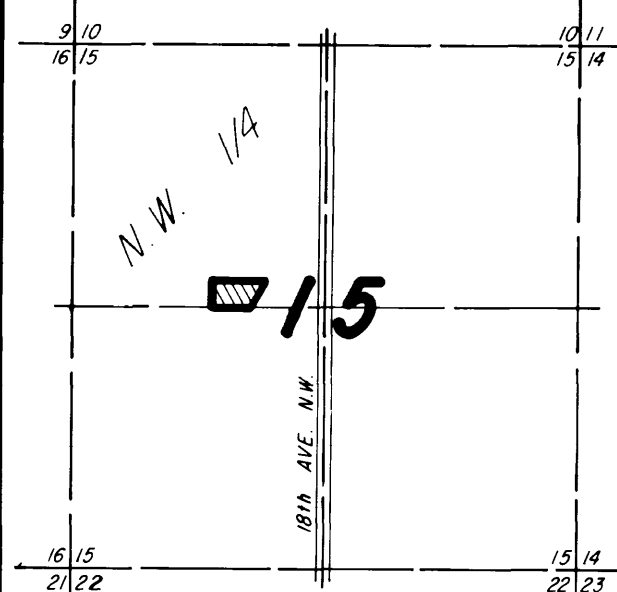
DOCUMENT NUMBER 152584

I hereby certify that this instrument was filed in the Office of the County Recorder for record on this 31st day of May, 1989, at 4 o'clock P.M., and was duly recorded in the Olmsted County records.

By [Signature]
County Recorder

[Signature]
Deputy

PROPERTY LOCATION MAP
SECTION 15, TOWNSHIP 107N, RANGE 14W



City Approval

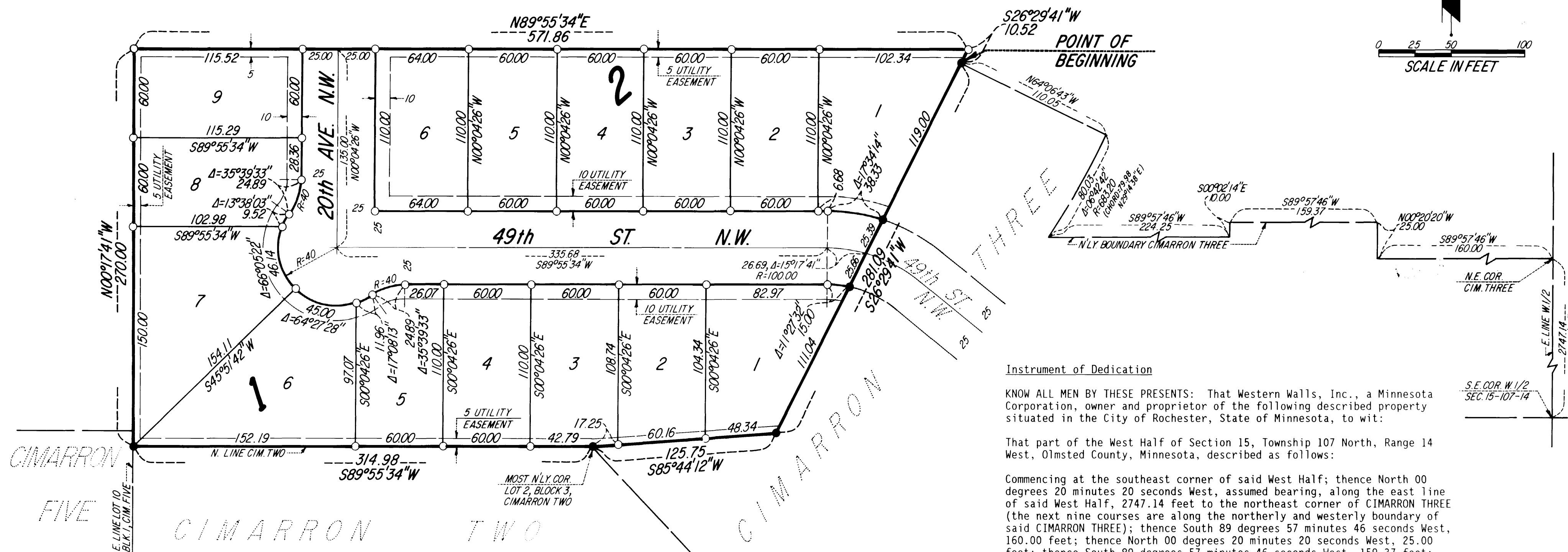
State of Minnesota
County of Olmsted
City of Rochester

JUDY KAY SCHERR, DEPUTY
I, Carole A. Grimm, City Clerk in and for the City of Rochester, do hereby certify that on the 15th day of May, 1989, the accompanying plat was duly approved by the Common Council of the City of Rochester. In testimony thereof I have hereunto signed my name and affixed the seal of said City of Rochester this 31st day of May, 1989.

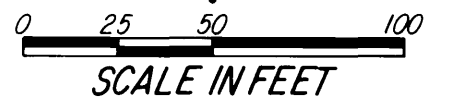
Judy Kay Scherr, DEPUTY
City Clerk

UTILITY EASEMENT defined:

An unobstructed easement for the construction and maintenance of all necessary underground or surface public utilities including rights to conduct drainage and trimming on said easement.



NOTE: ALL MONUMENTS SHOWN THUS: O ARE 5/8" I.D. CAPPED PIPES SET WITH REGISTRATION NO. 11622. ALL MONUMENTS, SHOWN THUS: ● ARE FOUND 5/8" PIPES. BASIS OF BEARING SYSTEM: ALL BEARINGS ARE IN RELATIONSHIP WITH THE EAST LINE W 1/2 SEC. 15, WHICH IS ASSUMED TO BE N00°20'20"W.



Instrument of Dedication

KNOW ALL MEN BY THESE PRESENTS: That Western Walls, Inc., a Minnesota Corporation, owner and proprietor of the following described property situated in the City of Rochester, State of Minnesota, to wit:

That part of the West Half of Section 15, Township 107 North, Range 14 West, Olmsted County, Minnesota, described as follows:

Commencing at the southeast corner of said West Half; then North 00 degrees 20 minutes 20 seconds West, assumed bearing, along the east line of said West Half, 2747.14 feet to the northeast corner of CIMARRON THREE (the next nine courses are along the northerly and westerly boundary of said CIMARRON THREE); then South 89 degrees 57 minutes 46 seconds West, 160.00 feet; then North 00 degrees 20 minutes 20 seconds West, 25.00 feet; then South 89 degrees 57 minutes 46 seconds West, 159.37 feet; then South 89 degrees 57 minutes 46 seconds West, 224.25 feet; then northerly 80.03 feet along a nontangential curve, concave northwesterly, radius of 683.20 feet, central angle of 06 degrees 42 minutes 42 seconds, and the chord of said curve bears North 29 degrees 14 minutes 38 seconds East, 79.98 feet; then North 64 degrees 06 minutes 43 seconds West, 110.05 feet for the point of beginning; then South 26 degrees 29 minutes 41 seconds West, 281.09 feet; then South 85 degrees 44 minutes 12 seconds West, 125.75 feet to the most northerly corner of Lot 2, Block 3, CIMARRON TWO; then South 89 degrees 55 minutes 34 seconds West, along the north line of said CIMARRON TWO, 314.98 feet to the east line of Lot 10, Block 1, CIMARRON FIVE; then North 00 degrees 17 minutes 41 seconds West, along said east line and along the northerly extension of said east line, 270.00 feet; then North 89 degrees 55 minutes 34 seconds East, 571.86 feet; then South 26 degrees 29 minutes 41 seconds West, 10.52 feet to the point of beginning.

Containing 3.10 acres more or less.

have caused the same to be surveyed and platted as CIMARRON NINTH and do hereby donate and dedicate to the public for the public use forever the thoroughfares and also dedicate the easements as shown on this plat for drainage and utility purposes only.

In witness whereof said Western Walls, Inc., a Minnesota Corporation, has caused these presents to be signed by its proper officer this 15th day of May, 1989.

Robert D. DeWitz
Robert D. DeWitz, President

State of Minnesota
County of Olmsted

The foregoing instrument was acknowledged before me this 15th day of May, 1989, by Robert D. DeWitz, President of Western Walls, Inc., a Minnesota Corporation, on behalf of the Corporation.

William E. Tointon
Notary Public, Olmsted County, Minnesota

My commission expires

WILLIAM E. TOINTON
NOTARY PUBLIC—MINNESOTA
OLMSTED COUNTY
MY COMM. EXP. AUG. 4, 1989

PREPARED BY:
McGHEE & BETTS, INC.
CONSULTING ENGINEERS
PLANNERS
LAND SURVEYORS
ROCHESTER, MINNESOTA