

FOXBOROUGH SUBDIVISION

Surveyor's Certificate

I hereby certify that I have surveyed and platted the property described on this plat as FOXBOROUGH SUBDIVISION; that this plat is a correct representation of the survey; that all distances are correctly shown on the plat in feet and hundredths of a foot; that all monuments have been correctly placed in the ground as shown; that the outside boundary lines are correctly designated on the plat; and that there are no wetlands or public highways to be designated on said plat.

James E. Swanson
James E. Swanson, R.L.S.
Minnesota Registration Number 11622

State of Minnesota
County of Olmsted

The surveyor's certificate was subscribed and sworn to before me, a Notary Public, this 27th day of April, 1989.

William E. Tontin
Notary Public, Olmsted County, Minnesota

My commission expires 

County Surveyor
I certify that this plat has been checked mathematically and that the plat conforms to the applicable platting laws, this 27th day of April, 1989.

Ed Kniale
Olmsted County Surveyor

Tax Statements

Taxes due and payable for the year 1989 have been paid.

Jean Becker
Olmsted County Treasurer

Date June 1, 1989

No delinquent taxes due and transfer entered this 1st day of June, 1989.

Daniel J. Hamerstein, Deputy
Olmsted County Auditor

County Recorder 113 2015

DOCUMENT NUMBER

I hereby certify that this instrument was filed in the Office of the County Recorder for record on this 1st day of June, 1989, at 4 o'clock P.M., and was duly recorded in the Olmsted County records.

LOSS PREVENTION

By
County Recorder

Suzann Murray
Deputy

City Approval

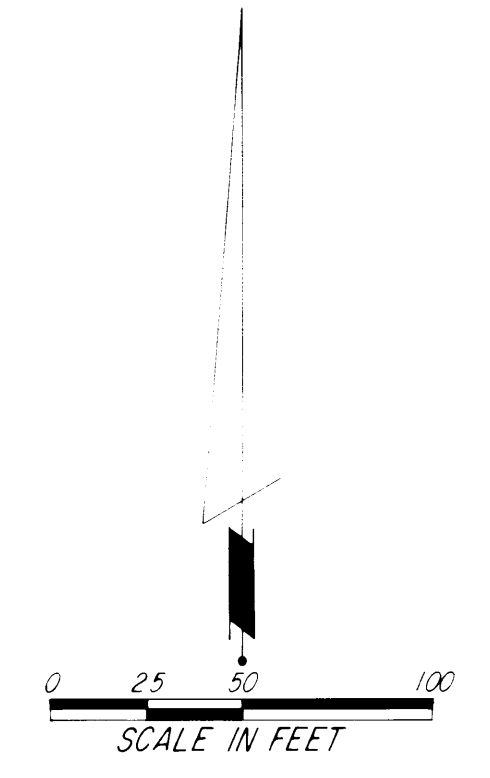
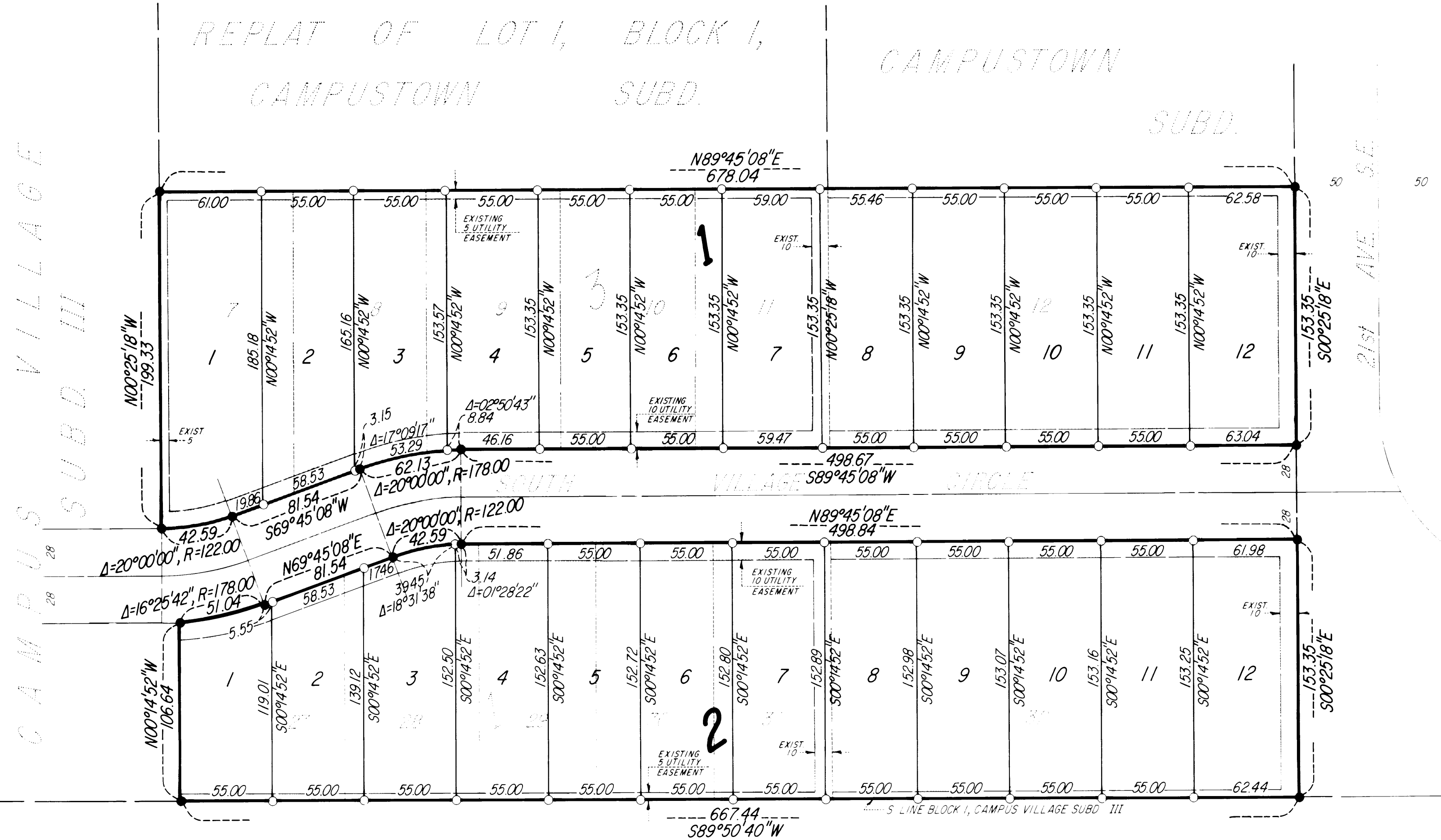
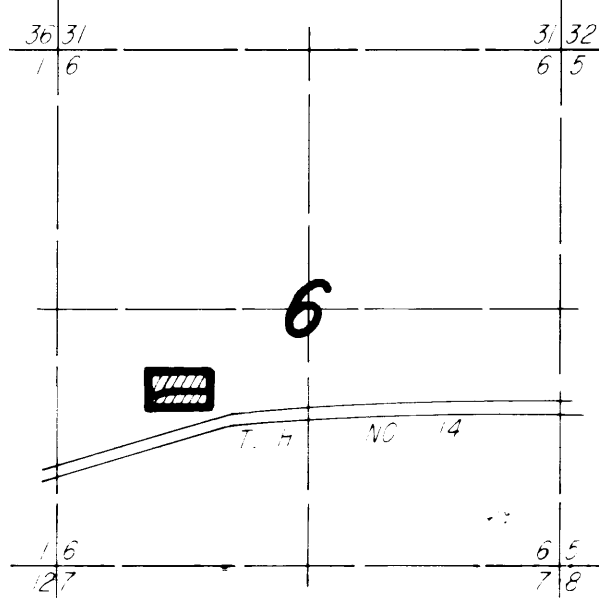
State of Minnesota
County of Olmsted
City of Rochester

I, Carole A. Grimm, City Clerk in and for the City of Rochester, do hereby certify that on the 1st day of MAY, 1989, the accompanying plat was duly approved by the Common Council of the City of Rochester. In testimony thereof I have hereunto signed my name and affixed the seal of said City of Rochester this 23 day of MAY, 1989.

Carole A. Grimm
City Clerk

PROPERTY LOCATION MAP

SECTION 6, TOWNSHIP 106N, RANGE 13W



NOTE:
ALL MONUMENTS SHOWN THUS: ○
ARE 5/8" I.D. CAPPED PIPES SET
WITH REGISTRATION NO. 11622
ALL MONUMENTS SHOWN THUS: ●
ARE FOUND 3/4" PIPES.

BASIS OF BEARING SYSTEM:
ALL BEARINGS ARE IN RELATIONSHIP
WITH THE SOUTH LINE BLOCK 1, CAMPUS
VILLAGE SUBD. III, WHICH IS ASSUMED
TO BE S89°50'40" W.

Instrument of Dedication

KNOW ALL MEN BY THESE PRESENTS: That Fine Shelter Development Group, Inc., a Minnesota Corporation, owner and proprietor of the following described property situated in the City of Rochester, State of Minnesota, to wit:

Lots 27-32 inclusive, Block 1, and Lots 7-12 inclusive, Block 3, all in CAMPUS VILLAGE SUBDIVISION III, Rochester, Minnesota.

have caused the same to be surveyed and platted as FOXBOROUGH SUBDIVISION.

In witness whereof said Fine Shelter Development Group, Inc., a Minnesota Corporation, has caused these presents to be signed by its proper officer this 1st day of May, 1989.

Richard L. Hexum, Jr.
Richard L. Hexum, Jr., President

State of Minnesota
County of Olmsted

The foregoing instrument was acknowledged before me this 1st day of May, 1989, by Richard L. Hexum, Jr., President of Fine Shelter Development Group, Inc., a Minnesota Corporation, on behalf of the Corporation.

William E. Tontin
Notary Public, Olmsted County, Minnesota

My commission expires 

PREPARED BY:
McGHEE & BETTS, INC.
CONSULTING ENGINEERS
PLANNERS
LAND SURVEYORS
ROCHESTER, MINNESOTA