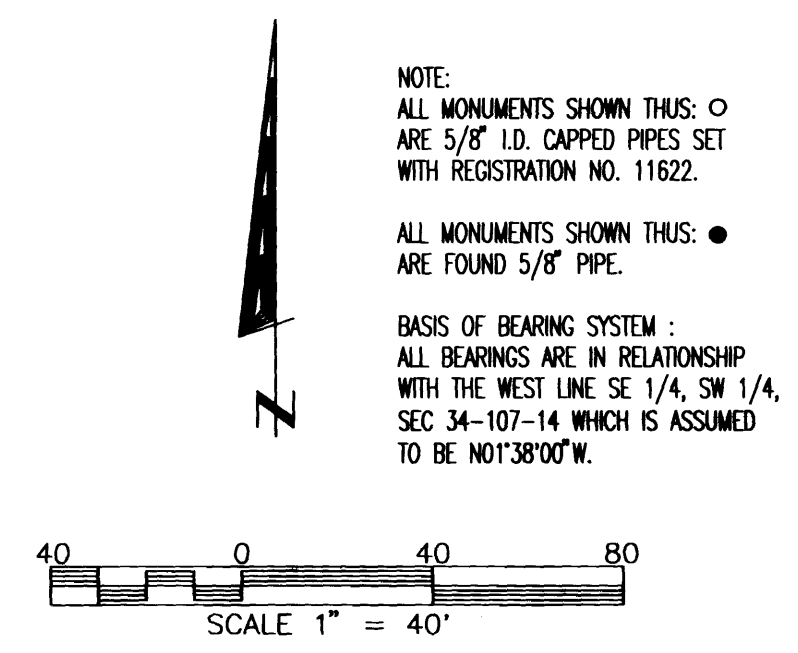
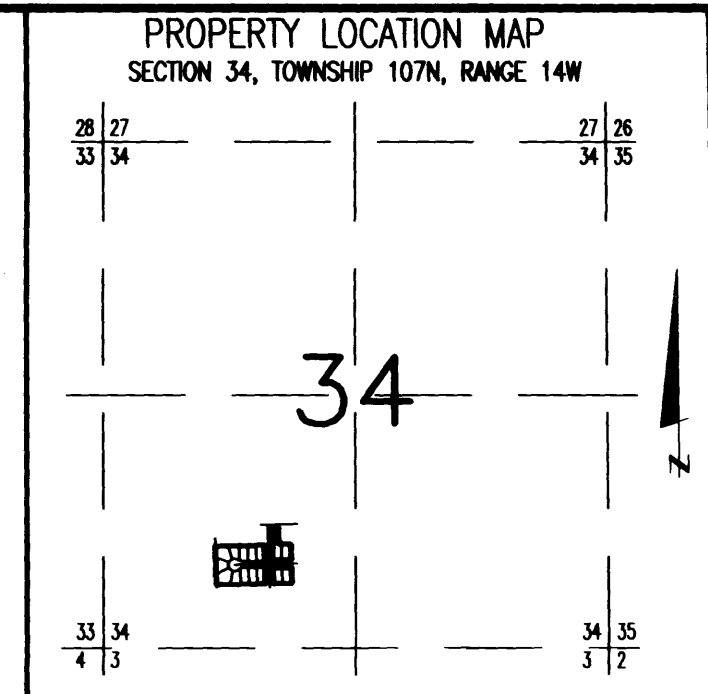


OFFICIAL PLAT

WEST ZUMBRO ESTATES



NOTE:
ALL MONUMENTS SHOWN THUS: ○
ARE 5/8" I.D. CAPPED PIPES SET
WITH REGISTRATION NO. 11622.

ALL MONUMENTS SHOWN THUS: ●
ARE FOUND 5/8" PIPE.

BASIS OF BEARING SYSTEM:
ALL BEARINGS ARE IN RELATIONSHIP
WITH THE WEST LINE SE 1/4, SW 1/4,
SEC 34-107-14 WHICH IS ASSUMED
TO BE N01°38'00" W.

Surveyor's Certificate

I hereby certify that I have surveyed and platted the property described on this plat as WEST ZUMBRO ESTATES; that this plat is a correct representation of the survey; that all distances are correctly shown on the plat in feet and hundredths of a foot; that all monuments have been correctly placed in the ground as shown; that the outside boundary lines are correctly designated on the plat; and that there are no wet lands as defined in MS 505.02, Subd. 1, or public highways to be designated other than as shown.

James E. Swanson
James E. Swanson, L.S.
Minnesota License Number 11622

State of Minnesota
County of Olmsted

The surveyor's certificate was subscribed and sworn to before me, a Notary Public, this 6th day of October, 1995.

Jennifer A. White
Jennifer A. White
Notary Public, Olmsted County, Minnesota
My commission expires: January 31, 2000

County Surveyor

I certify that this plat has been checked mathematically and that the plat conforms to the applicable laws, this 10 day of October, 1995.

Edward R. Kusile
Edward R. Kusile
Olmsted County Surveyor

Tax Statements

Taxes payable in the year 1995 on the land herein described have been paid, there are no delinquent taxes and transfer has been entered this 1st day of December, 1995.

Bob Ryan
Bob Ryan
Olmsted County Auditor/Treasurer

By *Lily Bartz*
Lily Bartz
Deputy

County Recorder
DOCUMENT NUMBER 717247

I hereby certify that this instrument was filed in the office of the County Recorder for record on this 1 day of December, 1995, at 5 o'clock P.M., and was duly recorded in the Olmsted County records.

By *Nancy F. Bellier*
Nancy F. Bellier
County Recorder
Deputy

City Approval

State of Minnesota
County of Olmsted
City of Rochester

I, Carole A. Grimm, City Clerk, in and for the City of Rochester, do hereby certify that on the 22 day of October, 1995, the accompanying plat was duly approved by the Common Council of the City of Rochester. In testimony thereof I have hereunto signed my name and affixed the seal of said City of Rochester this 29 day of November, 1995.

Carole A. Grimm
Carole A. Grimm
City Clerk

Instrument of Dedication

KNOW ALL MEN BY THESE PRESENTS: That the City of Rochester, a Municipal Corporation, owner and proprietor, of the following described property situated in the City of Rochester, State of Minnesota, to wit:

That part of WEST ZUMBRO ADDITION, Rochester, Minnesota, described as follows:

Lots 9, 10, 11, 12, 13, 14, 15 and 16, Block 1;

ALSO:

Lots 1, 2, 3, 4, 5, 6, 7 and 8, Block 6;

ALSO:

Lots 1, 2 and 3, Block 5;

ALSO:

Lot 1, Block 2 and that part of the north half of the vacated alley adjoining said Lot 1;

ALSO:

Lots 12, 13 and 14, Block 2, and that part of the south half of the vacated alley adjoining said Lots 12, 13 and 14;

ALSO:

That part of vacated 1st Street NW (platted as West 6th Street) lying westerly of the west line of 19th Avenue NW (platted as Thomas Street) and easterly of the west line of WEST ZUMBRO ADDITION, as said streets were platted in said WEST ZUMBRO ADDITION.

Containing 4.15 Acres, more or less.

has caused the same to be surveyed and platted as WEST ZUMBRO ESTATES and do hereby donate and dedicate to the public for the public use forever the cul-de-sac, and also dedicate the easements as shown on this plat for drainage and utility purposes only.

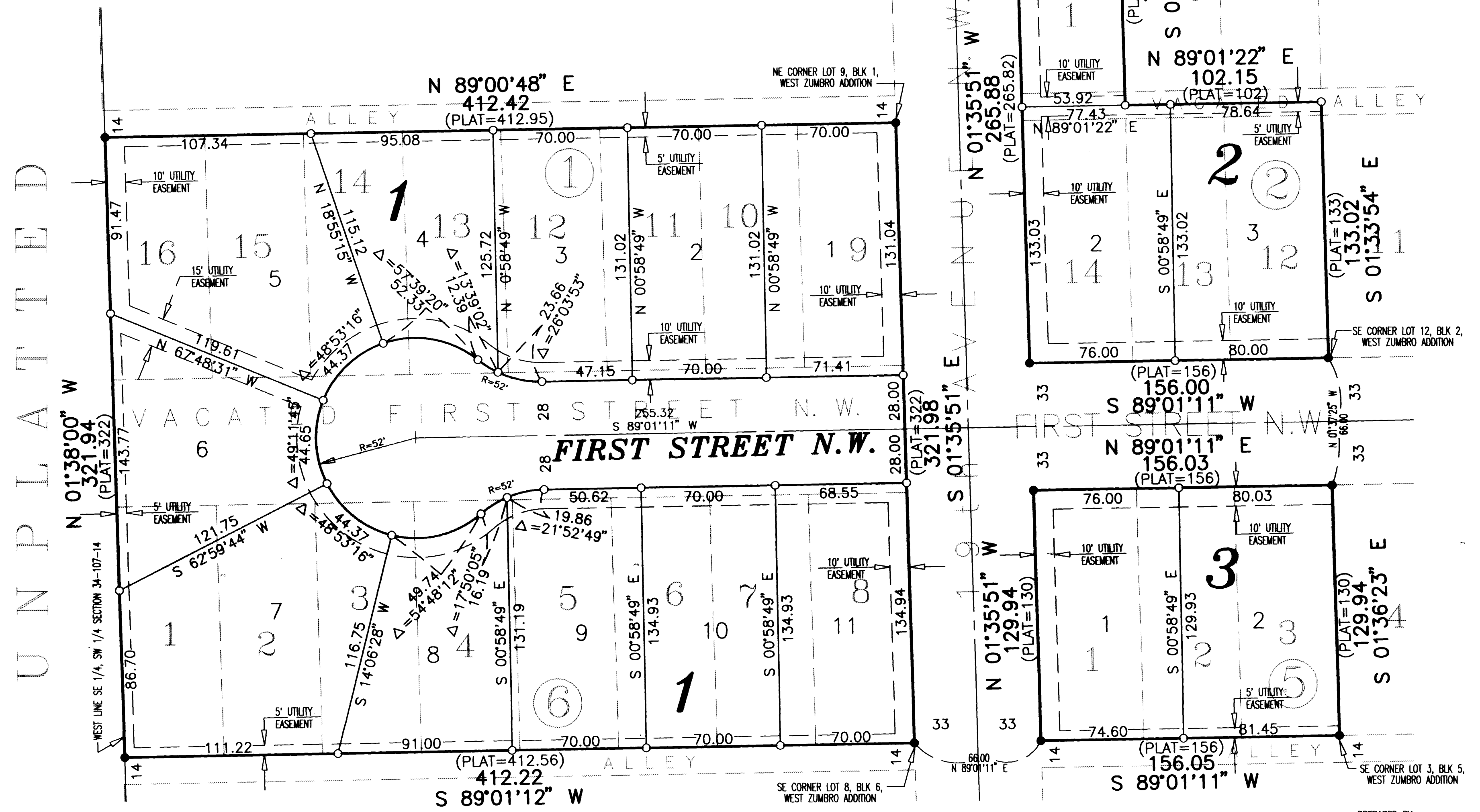
In witness whereof said City of Rochester, a Municipal Corporation, has caused these presents to be signed by its proper officials this 22 day of October, 1995.

Charles K. Hazama
Charles K. Hazama, Mayor
Carole A. Grimm
Carole A. Grimm, City Clerk

State of Minnesota
County of Olmsted

The foregoing instrument was acknowledged before me this 22 day of Oct 1995, by Charles K. Hazama, Mayor, and Carole A. Grimm, City Clerk, on behalf of the City of Rochester, Minnesota.

Judy Kay Eshen
Judy Kay Eshen
Notary Public, Olmsted County, Minnesota
My commission expires 2000



UTILITY EASEMENT defined:
An unobstructed easement for the construction and maintenance of all necessary underground and surface public utilities including rights to conduct drainage and trimming on said easement.

PREPARED BY:
McGHEE & BETTS, INC.
CONSULTING ENGINEERS
PLANNERS, LAND SURVEYORS
ROCHESTER, MINNESOTA